

8626 Elder Creek Rd

POWER INN SUBMARKET

SACRAMENTO, CA

8626 Elder Creek Rd
Sacramento, CA 95828
www.cbre.com

±4,900 SF Industrial Building with Fenced Yard



Contact Us

Zac Sweet SIOR
Senior Vice President
+1 916 717 4768
zac.sweet@cbre.com
Lic. 01352800

Tyler Howell
Senior Associate
+1 916 781 4835
tyler.howell1@cbre.com
Lic. 02100245

Courtney Lee
Associate
+1 916 906 5544
courtney.lee@cbre.com
Lic. 02031694

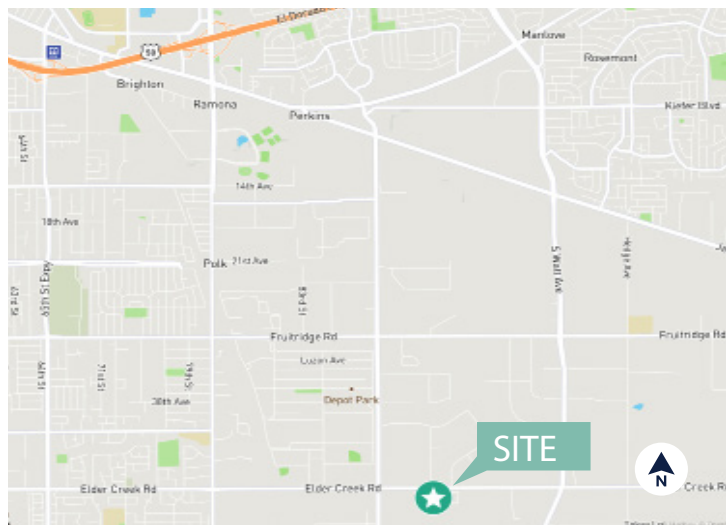
Nick Whittemore
Asset Manager
+1 916 379 3872
nicholaswhittemore@buzzoates.com
Lic. 02031694



PROPERTY INFORMATION

8626 Elder Creek Rd
SACRAMENTO, CA 95828

- + AVAILABLE: $\pm 4,900$ SF
- + OFFICE AREA: ± 600 SF
- + PAVED & FENCED YARD: $\pm 4,430$ SF
- + LOT SIZE: ± 0.24 Acres
- + CLEAR HEIGHT: 16'-18'
- + GRADE LEVEL DOORS: 6 - 9' X 10'
- + ZONING: M1 Light Industrial
- + POWER: 200 Amps, 120/208V



Contact Us

Zac Sweet SIOR
Senior Vice President
+1 916 717 4768
zac.sweet@cbre.com
Lic. 01352800

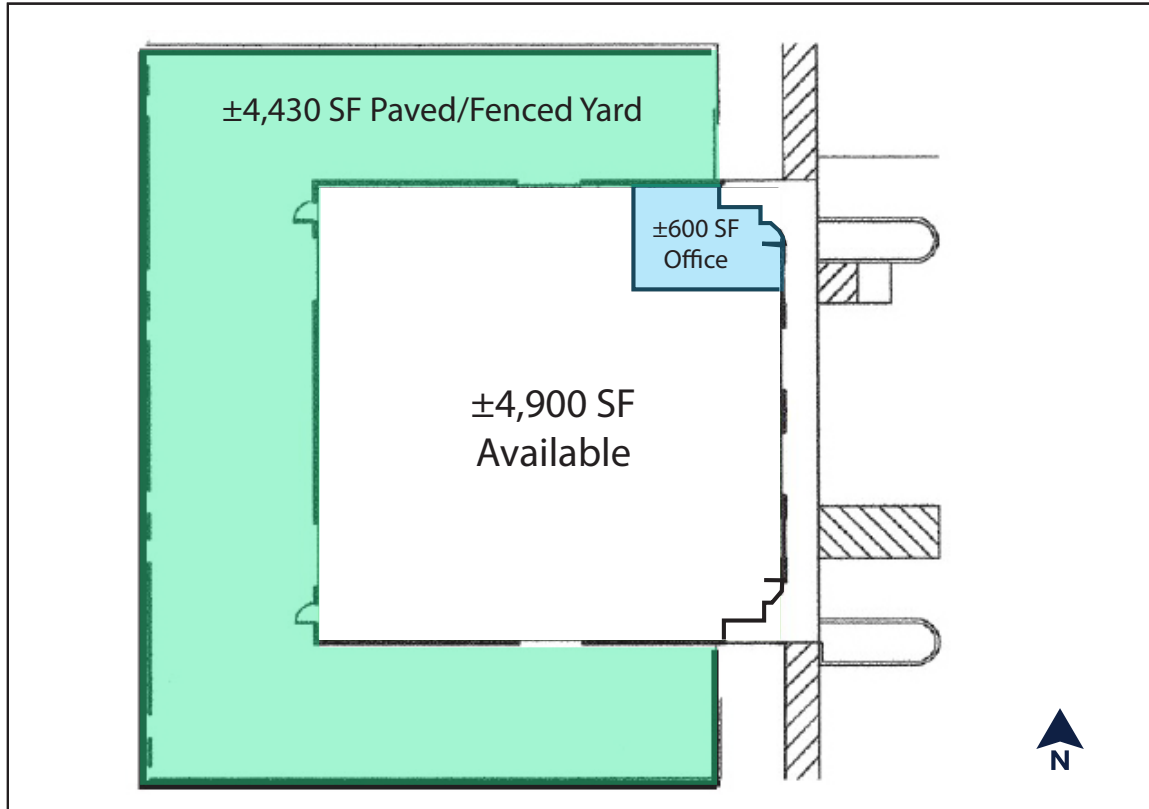
Tyler Howell
Senior Associate
+1 916 781 4835
tyler.howell1@cbre.com
Lic. 02100245

Courtney Lee
Associate
+1 916 906 5544
courtney.lee@cbre.com
Lic. 02031694

Nick Whittemore
Asset Manager
+1 916 379 3872
nicholaswhittemore@buzzoates.com
Lic. 02031694



FLOOR PLAN



Contact Us

Zac Sweet SIOR
Senior Vice President
+1 916 717 4768
zac.sweet@cbre.com
Lic. 01352800

Tyler Howell
Senior Associate
+1 916 781 4835
tyler.howell1@cbre.com
Lic. 02100245

Courtney Lee
Associate
+1 916 906 5544
courtney.lee@cbre.com
Lic. 02031694

Nick Whittemore
Asset Manager
+1 916 379 3872
nicholaswhittemore@buzzoates.com
Lic. 02031694



www.cbre.com/sacramentodt