

230 NEWPORT CENTER DR

NEWPORT BEACH



NOW LEASING

Creative Office Space

LEASED BY:

RW REDWOOD WEST

WELCOME TO

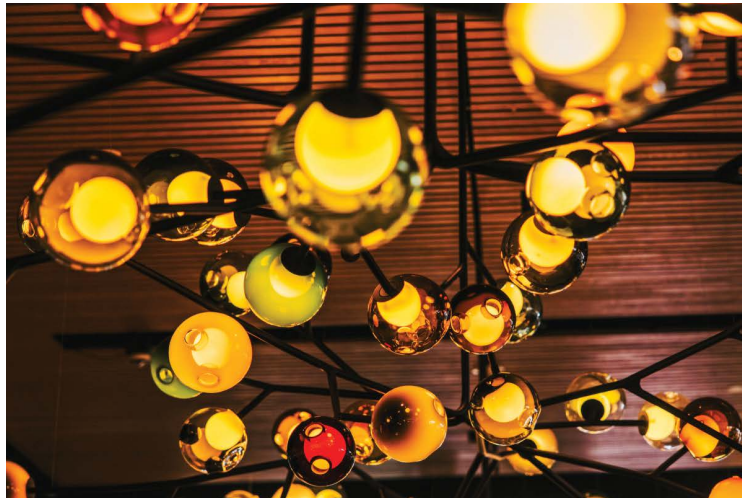
230 NEWPORT CENTER DRIVE

230 Newport Center Drive is located in the Design Plaza of Newport Beach offering a diverse mix of retail, service, and office tenants. Neighboring tenants include FedEx Office, Muldoon's Irish Pub, Wild Strawberry Café, Spa Gregorie's, Fig & Olive, and Red O. Situated along Newport Center and across the street from Fashion Island Mall and the Newport Beach Civic Center, 230 Newport Center Drive draws a strong daytime population of business professionals, international tourists, and affluent homeowners.





JOEY NEWPORT BEACH



The Features & Amenities

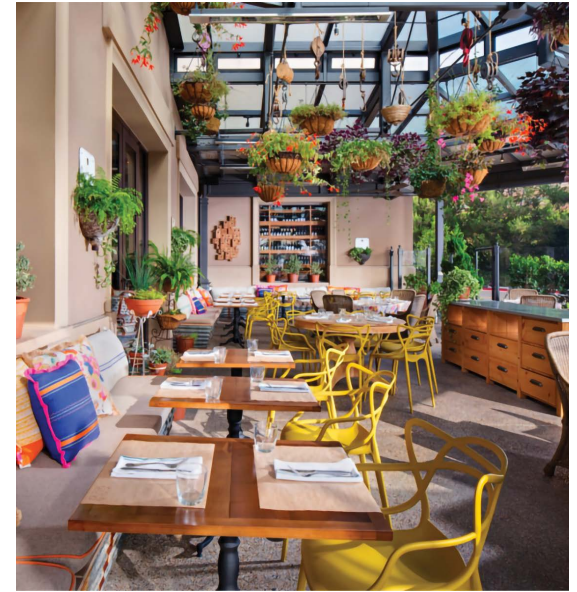


FEATURED LOCATION **JOEY RESTAURANTS**

In the heart of Orange County's luxury shopping destination, Fashion Island, JOEY Newport Beach is an opulent oasis. The space features a gallery wall highlighting several hand-picked local artists and a unique Bocci light installation. Boasting 9,367 square feet, it includes an open patio which features a bar and retractable sections of roof, providing coverage and the ability to open to the day or evening sky. A large-scale outdoor fire pit offers guests an inviting lounge area, this space is the perfect place to enjoy a glass of well-deserved champagne fireside after a day of shopping.

- Prestigious Newport Beach Address
- Ocean and Catalina views
- Ample and convenient surface parking
- Extended balconies and en-suite operable windows that create an indoor/outdoor office experience
- Convenient access to the 55 & 73 freeways and PCH
- Walking distance to Fashion Island dining, shopping, & entertainment
- Elevator Service
- Floor to ceiling glass windows with high ceilings

NEIGHBORHOOD HOT SPOTS



GULFSTREAM

CUCINA ENOTECA



RED O

JOEY NEWPORT BEACH

NEWPORT
BACK BAY

FASHION ISLAND
SHOPPING CENTER

JOHN WAYNE
AIRPORT (SNA)

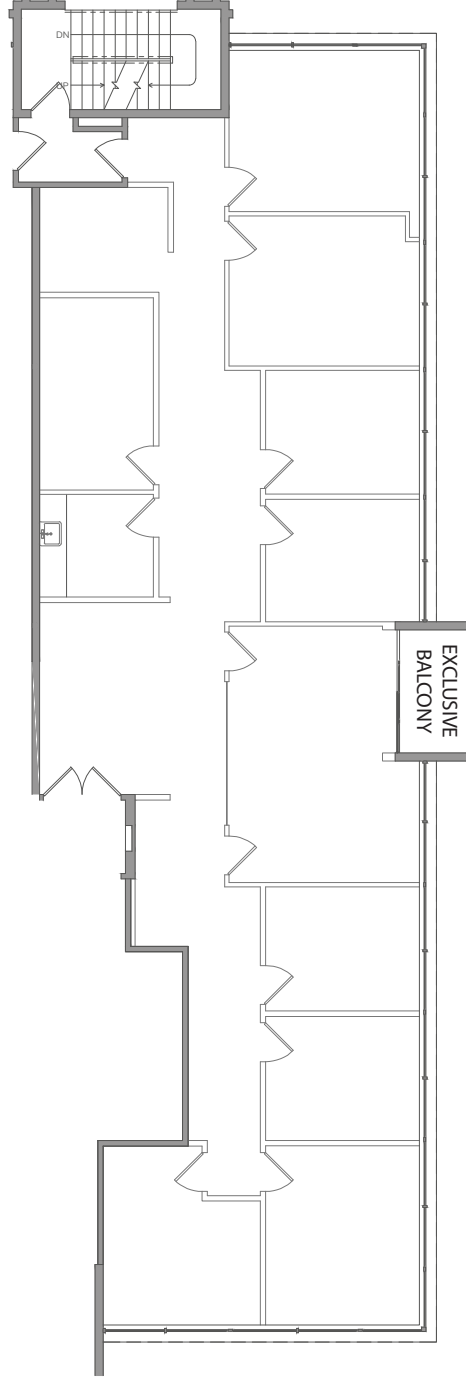
NEWPORT BEACH
COUNTRY CLUB

230 NEWPORT CENTER DR



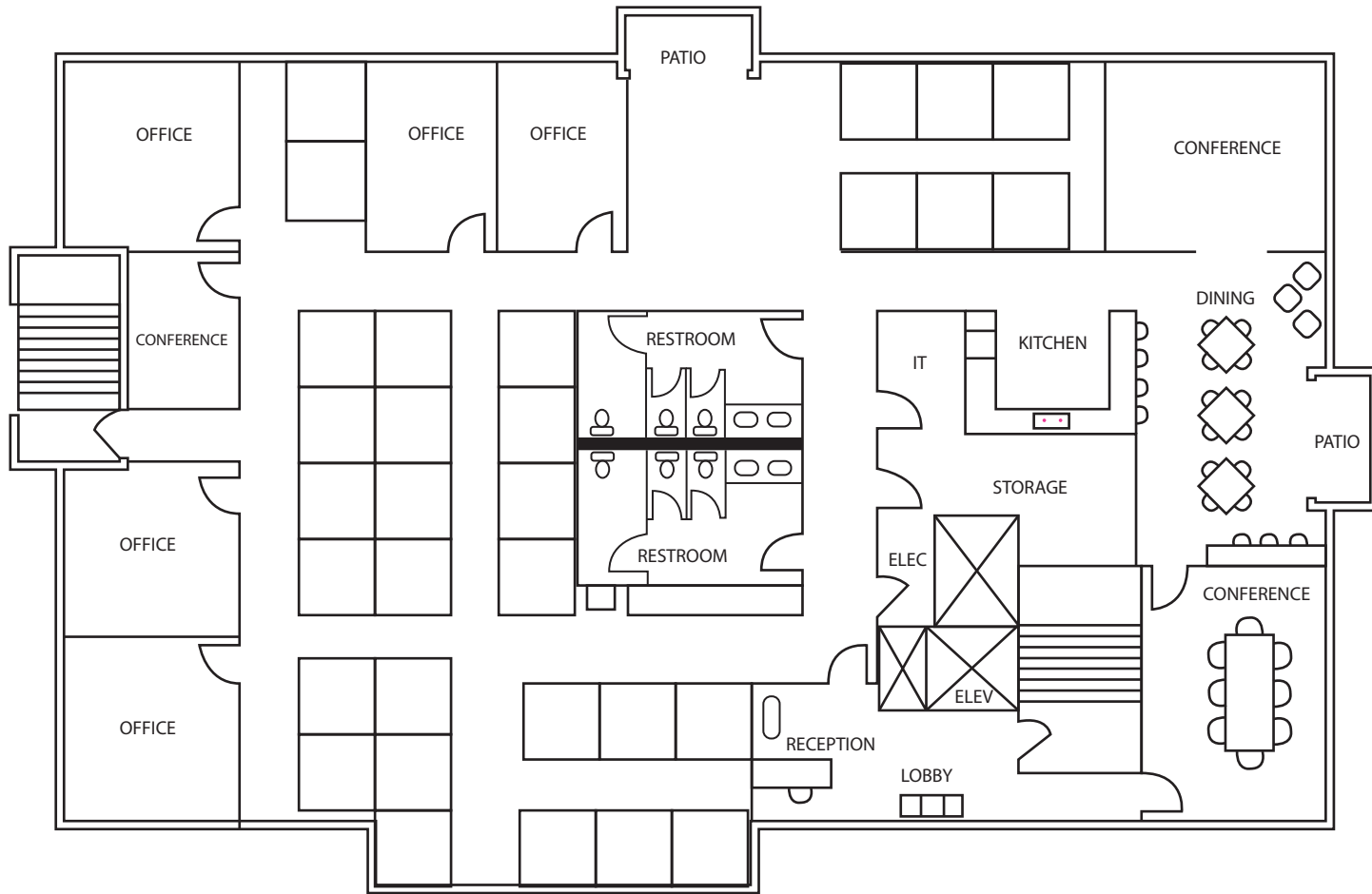
Suite 210


+/- 3,136 SF



Suite 300

+/- 6,000 SF



 = DESKS / CUBICLES

PACIFIC OCEAN & CATALINA VIEWS

230 NEWPORT CENTER DR

NEWPORT BEACH

For more information, please contact:

John Pomer

949.945.2649

john@redwoodwest.com

Lic. #01440689

Ben Gott

949.945.2648

ben@redwoodwest.com

Lic. #01724507

Christian Heffelman

949.945.2645

christian@redwoodwest.com

Lic. #02101426

Julie Johnson

949.945.2644

julie@redwoodwest.com

Lic. #02156626



BURNHAM
USA 

LEASED BY:

RW | REDWOOD
WEST

The information contained in this document has been obtained from sources believed reliable. While Redwood West does not doubt its accuracy, Redwood West has not verified it and makes no guarantee, warranty or representation about it. It is your responsibility to independently confirm its accuracy and completeness. You and your advisors should conduct a careful, independent investigation of the property to determine your satisfaction to the suitability of the property for your needs.