

FOR LEASE


MELVIN MARK
EST. 1945



14910 SE MORNING WAY

14910 SE Morning Way, Clackamas, Oregon 97105

Industrial Space for Lease

From 1,500 to 3,000 RSF Contiguous / Divisible to Suit

Non-Contiguous 1,700 RSF Available

\$1.35/SF/Month NNN

TIM PARKER

503.546.4537

tparker@melvinmark.com

Licensed in OR & WA

DON DRAKE

503.546.4527

ddrake@melvinmark.com

Licensed in OR

Melvin Mark Brokerage Co.

111 Southwest Columbia

Portland, Oregon 97201

P: 503.223.9203 | melvinmark.com

14910 SE MORNING WAY FOR LEASE



LOCATION HIGHLIGHTS

Conveniently located off Clackamas Highway 212 with easy access to I-205, Highway 26 and Highway 224. Great visibility on the Highway 212 with approximately 30,000 cars ADT. Residential, food & beverage venues, public transit and numerous services nearby.

BUILDING HIGHLIGHTS

- 22,000 SF multi-tenant building
- 1,500-3,000 SF contiguous space available
- Non-contiguous 1,700 SF available
- Spaces can be leased individually or in combination as shown in the building plan
- Ideal for small manufacturing, distribution, contractors, industrial suppliers and services
- Each unit has or has the capability for an office and bathroom
- Light 3 phase power
- Grade level loading 18' ceiling



PROFESSIONAL
SERVICES



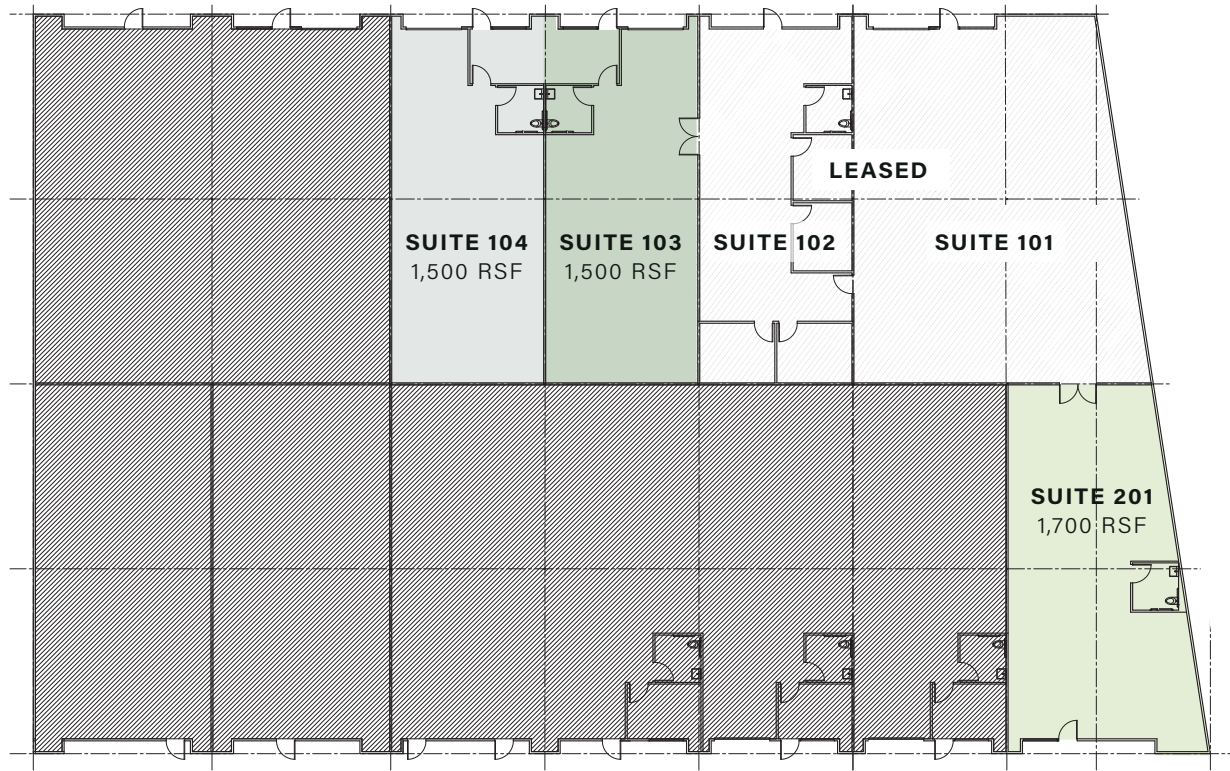
PARKING
AVAILABLE



DINING
NEARBY



14910 SE MORNING WAY AVAILABILITY



FOR LEASE 1,500-3,000 RSF (approx.)

Available Space is Contiguous and Divisible to Suit

Non-Contiguous 1,700 SF Available

\$1.35/SF/Month NNN

TIM PARKER

503.546.4537

tparker@melvinmark.com

Licensed in OR & WA

DON DRAKE

503.546.4527

ddrake@melvinmark.com

Licensed in OR





MELVIN MARK

EST. 1945

FOR LEASE **14910 SE MORNING WAY**

14910 SE Morning Way | Clackamas, Oregon 97105

TIM PARKER

503.546.4537

tparker@melvinmark.com

Licensed in OR & WA

DON DRAKE

503.546.4527

ddrake@melvinmark.com

Licensed in OR

The information contained herein has been obtained from sources we deem reliable.
We do not, however guarantee its accuracy. All information should be independently verified prior to purchase or lease.