

189 LIBERTY ST NE #111
SALEM, OR 97301

RESTAURANT LEASE

PRESENTED BY TRADITION REAL ESTATE PARTNERS



PROPERTY OFFERING

BUILDING SIZE: 57,965 SF

AVAILABLE SF: 3,150

ZONING: CB

MARKET: SALEM

➔ 189 LIBERTY ST NE #111, SALEM, OR 97301



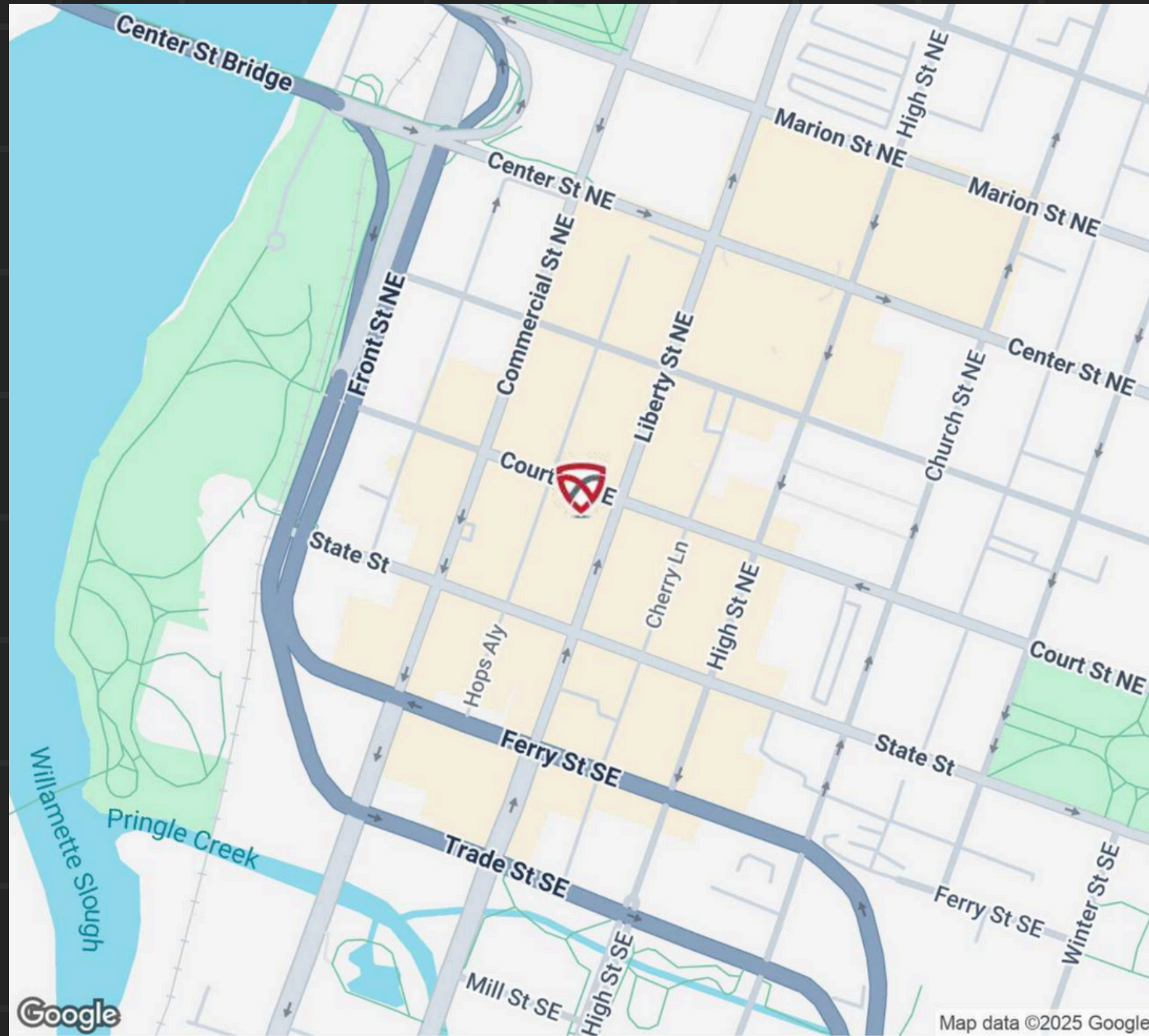
PROPERTY DESCRIPTION

↗ 189 LIBERTY ST NE #111, SALEM, OR 97301

NOW AVAILABLE, THIS 3,150 SF RESTAURANT SPACE IN THE HISTORIC REED OPERA HOUSE COMBINES CLASSIC CHARM WITH MODERN FUNCTIONALITY IN THE HEART OF DOWNTOWN SALEM. THE INTERIOR FEATURES WOOD FLOORING, A LARGE OPEN SEATING AREA WITH TWO SKYLIGHTS THAT BRING IN NATURAL LIGHT, WITH AN ADDITIONAL PRIVATE DINING ROOM IDEAL FOR EVENTS OR GROUP GATHERINGS. A BUILT-IN BAR ANCHORS THE MAIN SPACE, WHILE EXISTING KITCHEN INFRASTRUCTURE WITH A HOOD SYSTEM PROVIDES A STRONG FOUNDATION FOR FOOD SERVICE OPERATIONS. THE SPACE INCLUDES TWO BATHROOMS FOR CUSTOMER CONVENIENCE, ALONG WITH PRIVATE ALLEY ACCESS. LOCATED WITHIN THE REED, WHICH IS HOME TO OVER 80 BUSINESSES AND ATTRACTS MORE THAN 5,000 WEEKLY PEDESTRIAN VISITS, THIS OPPORTUNITY OFFERS BUILT-IN TRAFFIC AND VISIBILITY WITH ITS HISTORIC CHARACTER, FUNCTIONAL BUILDOUT, AND CENTRAL DOWNTOWN LOCATION, THIS SPACE IS WELL SUITED FOR A FULL-SERVICE RESTAURANT, BAR, OR DINING CONCEPT SEEKING A VIBRANT SETTING.



LOCATION



PROPERTY HIGHLIGHTS

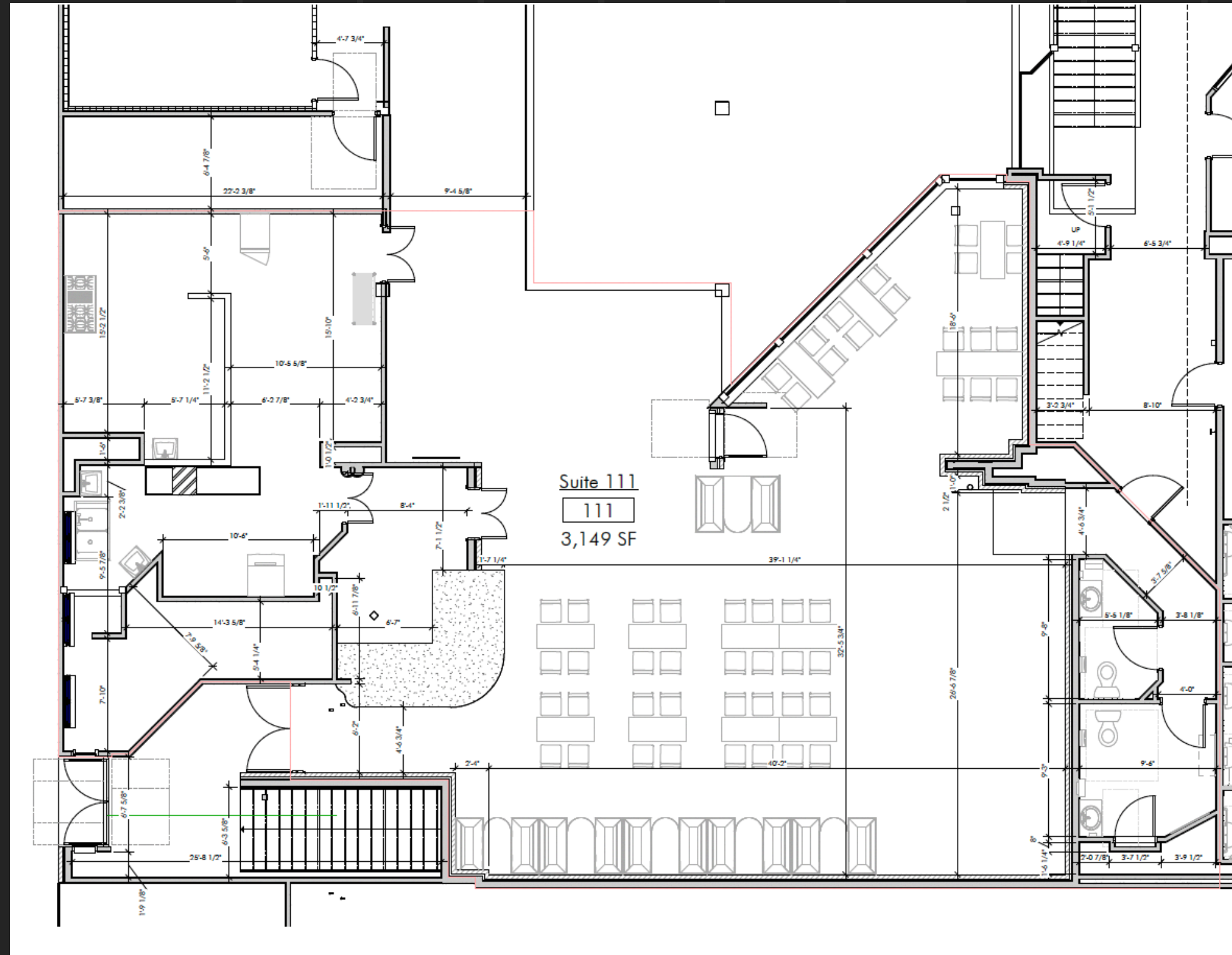
- 3,150 SF Restaurant
- CB Zoned Property
- Prime location in downtown Salem
- High visibility with heavy foot traffic
- High Ceilings with Two Skylights
- Flexible Open Layout
- Large Storefront Windows
- Street and Parking Garage Parking
- The Reed has over 80 business and weekly pedestrian visits of over 5,000 people!

➔ 189 LIBERTY ST NE #111, SALEM, OR 97301



FLOOR PLAN

➔ 189 LIBERTY ST NE #111, SALEM, OR 97301



CONCEPT



PHOTOS |

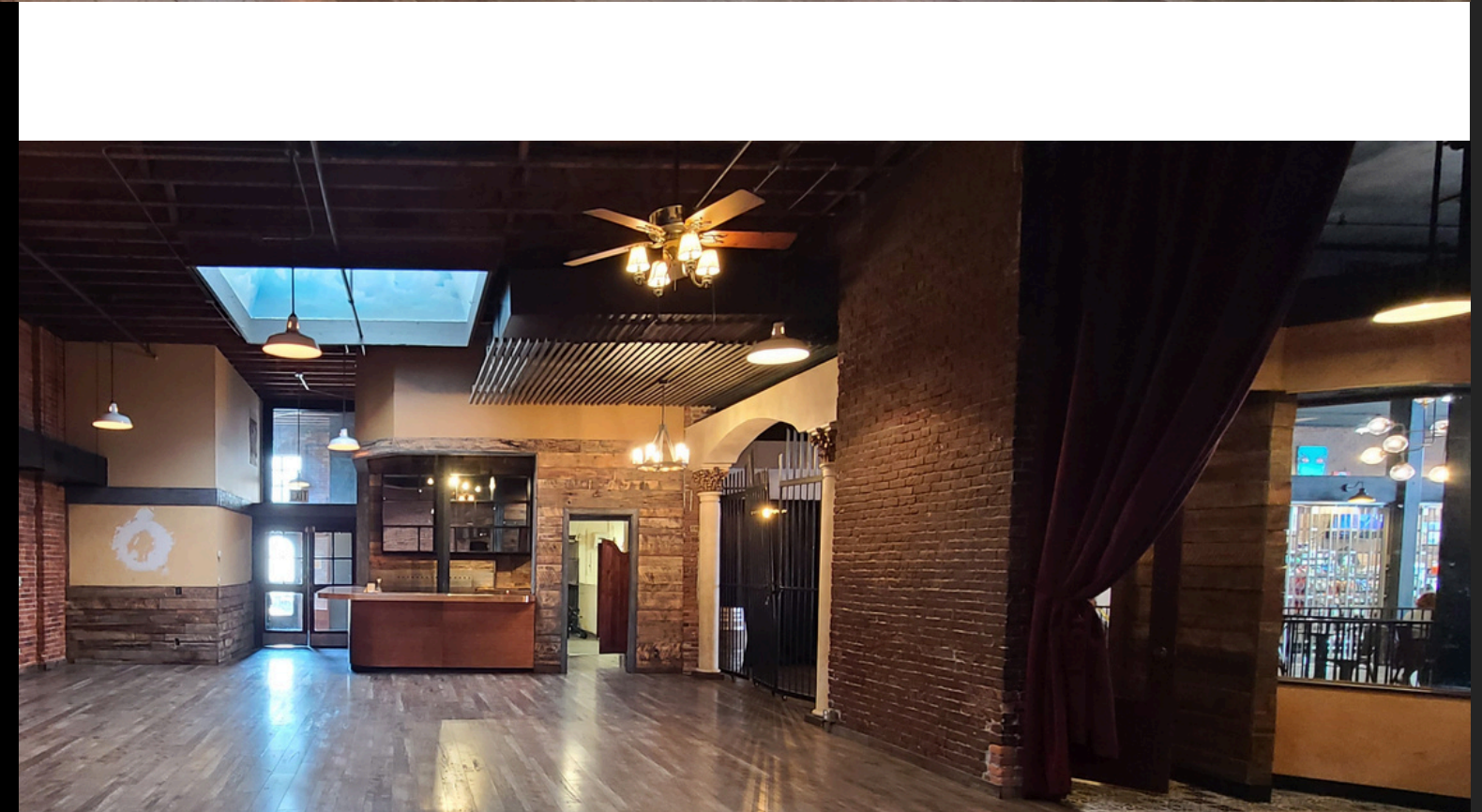
↗ 189 LIBERTY ST NE #111, SALEM, OR 97301

CONCEPT



PHOTOS |

↗ 189 LIBERTY ST NE #111, SALEM, OR 97301



PHOTOS |

↗ 189 LIBERTY ST NE #111, SALEM, OR 97301



PRICING



FOR LEASE
CALL BROKER
FOR PRICING

BROKERS



TRADITION
REAL ESTATE



AJ NASH
PRINCIPAL BROKER

503.559.9270
AJ@TRADITIONREP.COM



PAULA MOSELEY
COMMERCIAL BROKER

503.910.3055
PAULA@TRADITIONREP.COM