

OFFICE FOR LEASE



GC

REALTY & DEVELOPMENT, LLC.



3,095 SF Available for Immediate Occupancy

400 W Lake St #304-316, Roselle, IL 60172

Ian Pattison: (847) 650-3124 /// ian@gcrealtyinc.com

GC Realty & Development LLC 215 E. Irving Park Rd. Roselle IL 60172

All information deemed accurate but not guaranteed.

Lease Price: \$14/SF MG



SUITE INFORMATION

- **3,095 Total Square Feet Divisible to 1,310 SF or 1,785 SF Units**
- **Direct Elevator Access to Grand Lobby with Glass Walls & Marble Floors**
- **(6) Private Offices with Conference Room and IT Room**
- **(4) Private Bathrooms**
- **Kitchenette with Mini Fridge and Double Sinks**
- **Additional Coffee/Wet Bar**
- **Abundant Natural Light**

Ian Pattison

(847) 650-3124

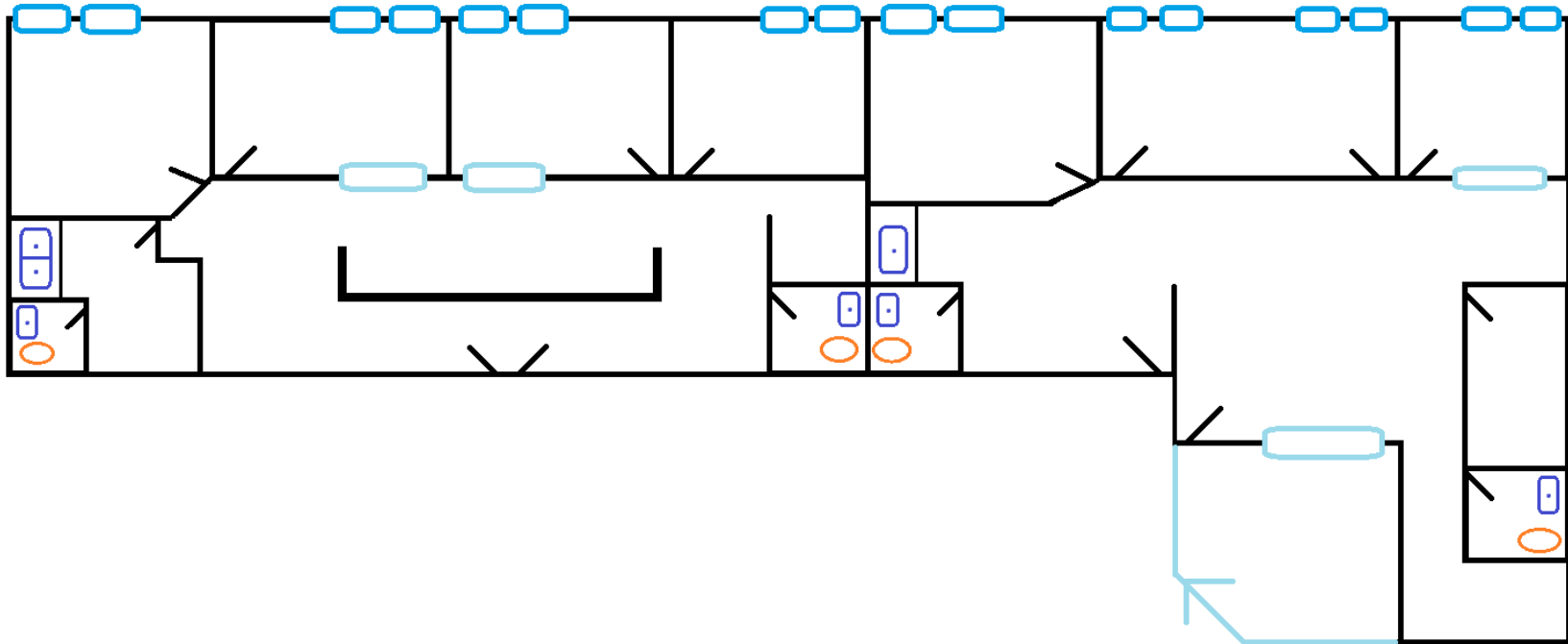
ian@gcrealtyinc.com

gcrealtycommercial.com

GC Realty & Development LLC

215 E. Irving Park Rd. Roselle IL 60172

Lease Price: \$14/SF MG



Ian Pattison

(847) 650-3124

ian@gcrealtyinc.com

gcrealtycommercial.com

GC Realty & Development LLC

215 E. Irving Park Rd. Roselle IL 60172