



LONDONTOWN BUSINESS CENTER

1332 LONDONTOWN BLVD | ELDERSBURG, MARYLAND 21784

FOR
LEASE



MACKENZIE

COMMERCIAL REAL ESTATE SERVICES, LLC

PROPERTY OVERVIEW

HIGHLIGHTS:

- Newly renovated lobby, bathrooms, and common areas; extensive glass line
- Close to major routes with great visibility; near various amenities and restaurants
- Plenty of parking
- Attractive rental rates
- Executive Office Space - Suite 115:
 - Executive-style office offering short-term options
 - Rental includes private office and access to shared conference room, break room, and reception/waiting area
 - All utilities and internet included

AVAILABLE:

SUITE 108 E & F: 1,000 SF ±
SUITE 114: 850 SF ±
SUITE 200: 1,500-8,341 SF ±
SUITE 115: 100-400 SF ±

ZONING:

I-1 (LIGHT INDUSTRIAL DISTRICT)

RENTAL RATE:

\$24.50/SF, FS



GOOGLE STREET VIEW

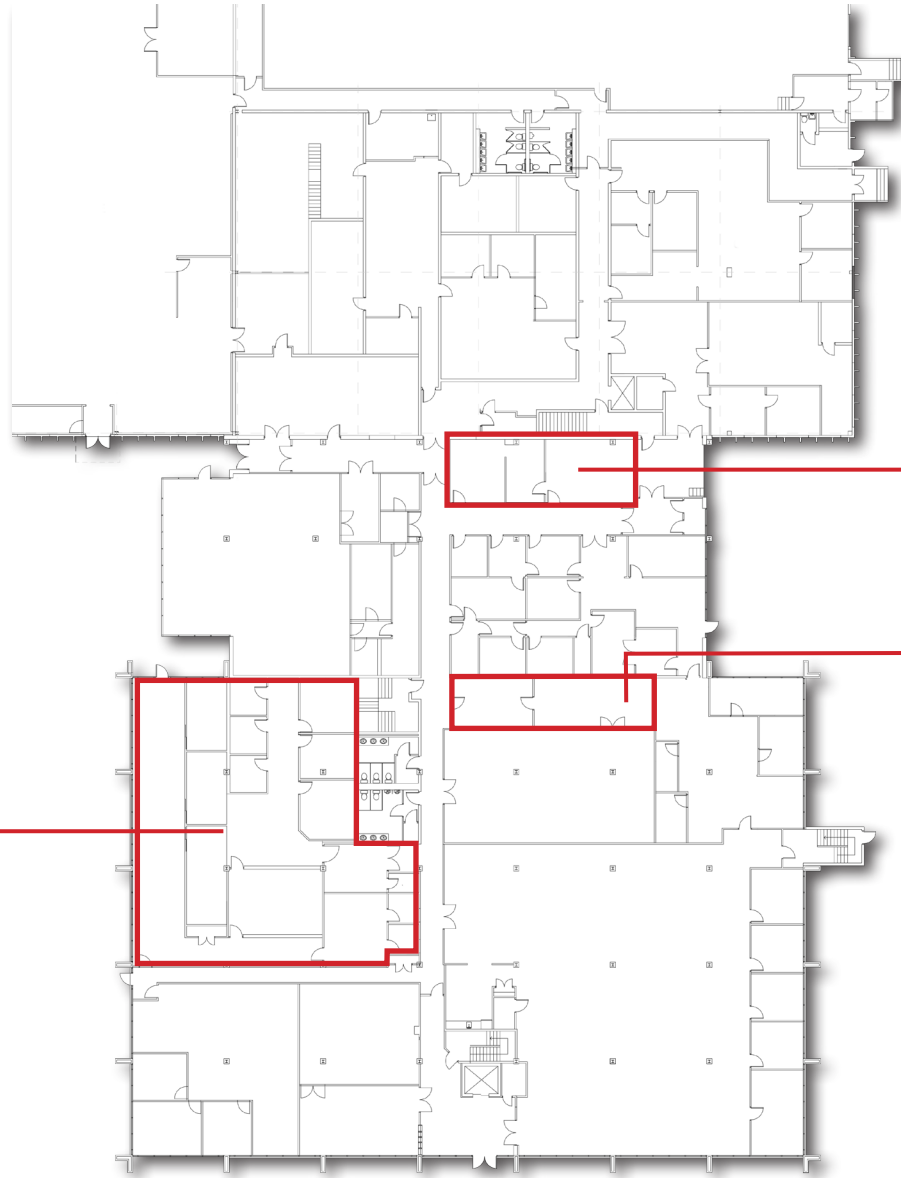
SITE PLAN



FLOOR PLAN - 1ST FLOOR

 - AVAILABLE

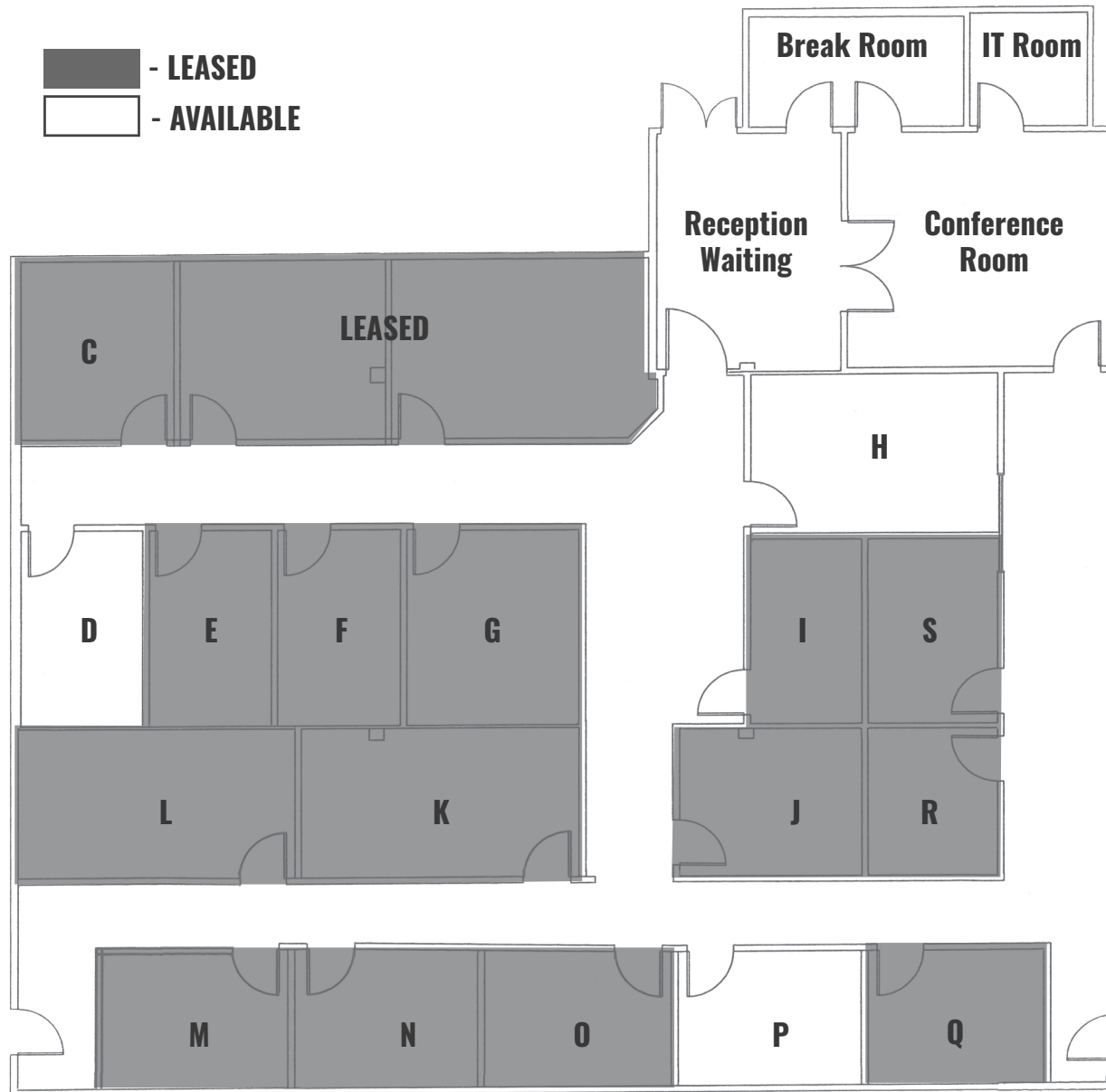
Suite 115: 100 - 400 sf
Executive Offices



○ Suite 108 E&F: 1,000 sf

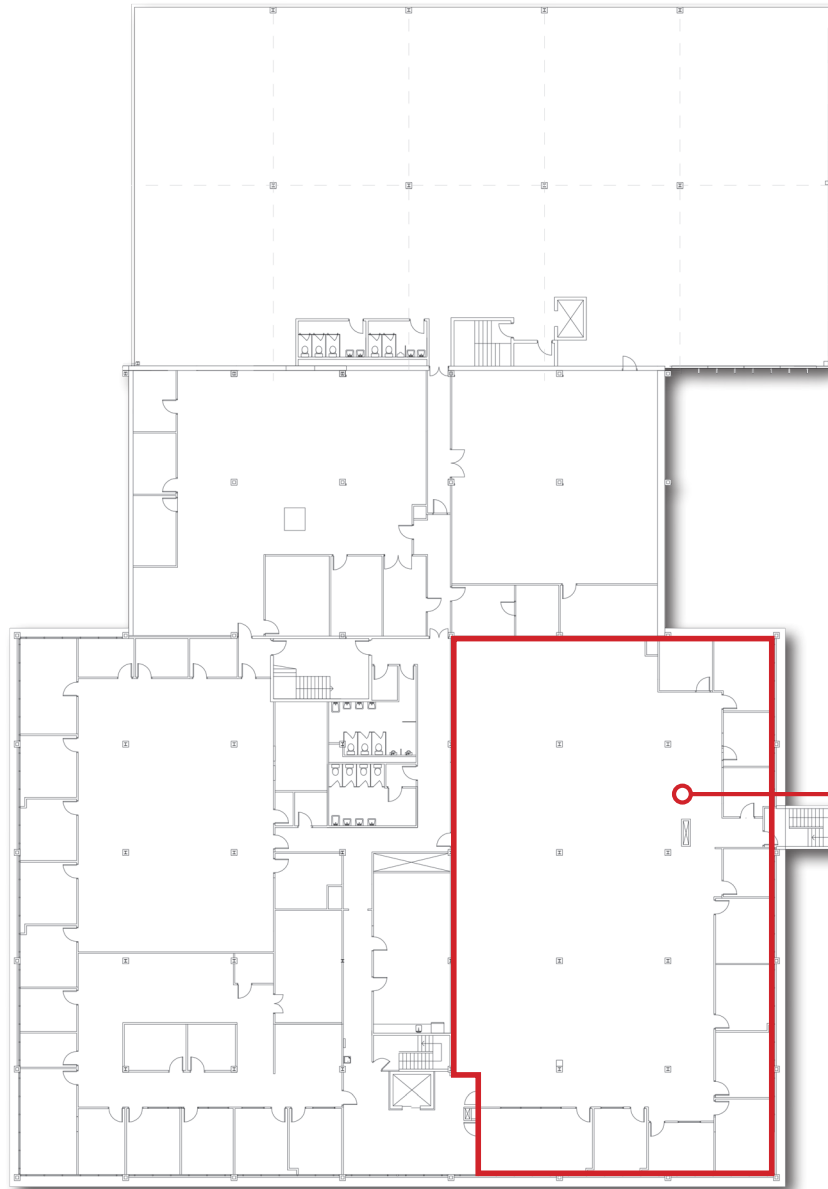
○ Suite 114: 850 sf

FLOOR PLAN - EXECUTIVE OFFICE SPACES



FLOOR PLAN - 2ND FLOOR

 - AVAILABLE

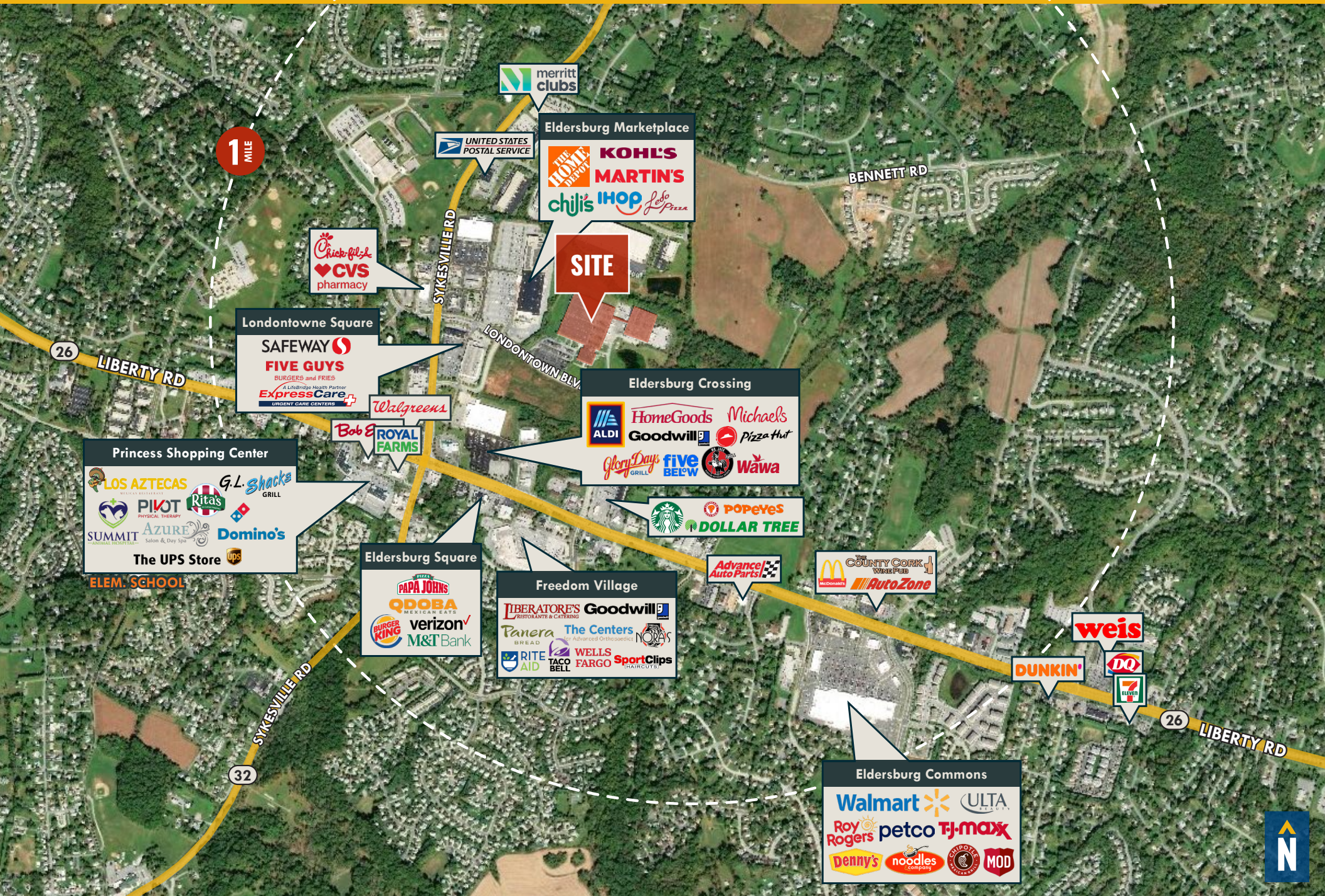


Suite 200: 1,500 sf - 8,341 sf

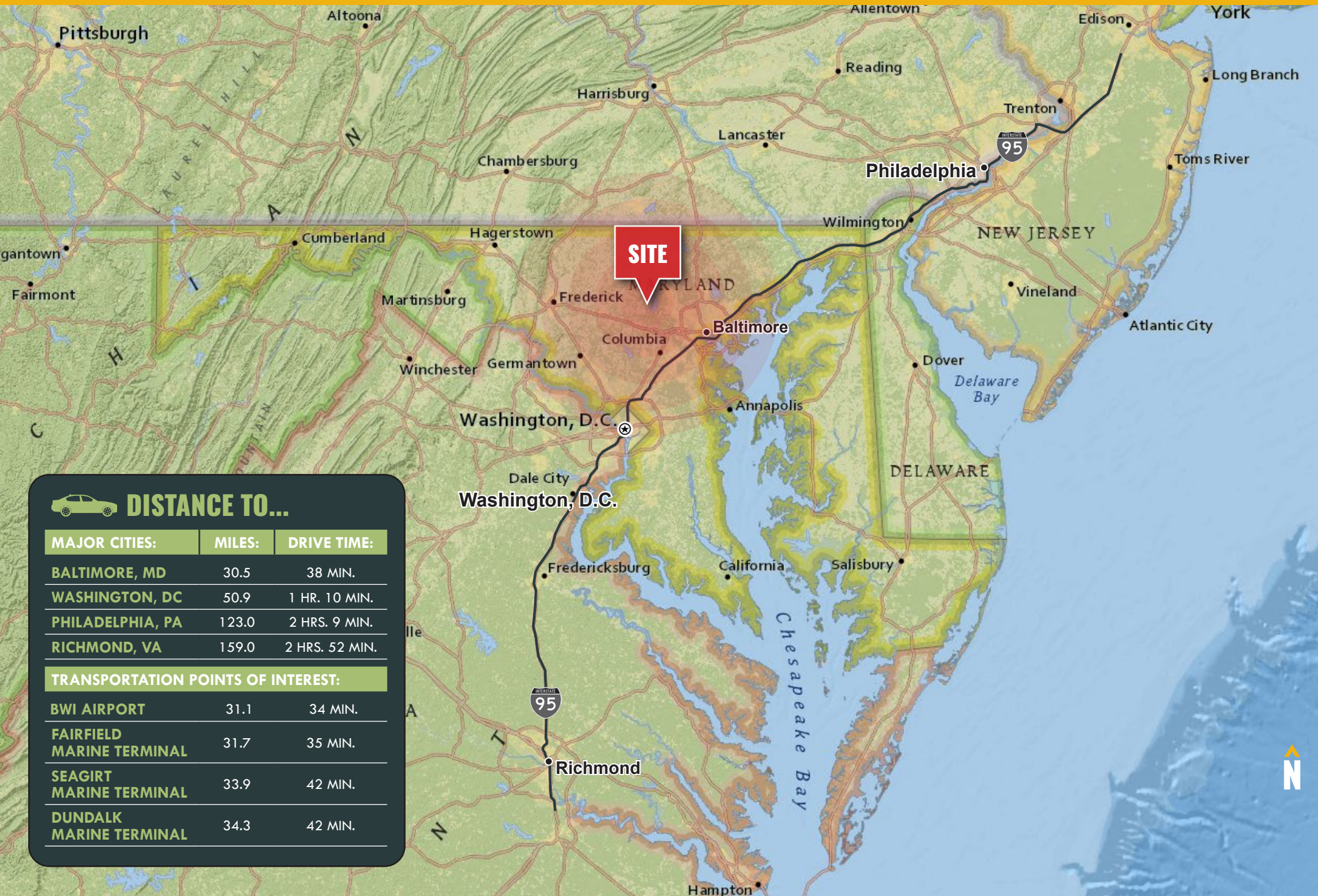
2ND FLOOR



ELDERSBURG TRADE AREA



LOCATION



FOR MORE INFO **CONTACT:**



DENNIS BOYLE, SIOR

SENIOR VICE PRESIDENT

443.798.9339

DBOYLE@mackenziecommercial.com



VISIT **PROPERTY PAGE** FOR MORE INFORMATION.



MACKENZIE

COMMERCIAL REAL ESTATE SERVICES, LLC

410-872-0400

**10175 Little Patuxent Parkway, Suite 902
Columbia, MD 21044**

OFFICES IN: ANNAPOLIS, MD BALTIMORE, MD BEL AIR, MD **COLUMBIA, MD** LUTHERVILLE, MD CHARLOTTESVILLE, VA

www.MACKENZIECOMMERCIAL.com

No warranty or representation, expressed or implied, is made as to the accuracy of the information contained herein, and same is submitted subject to errors, omissions, change of price, rental or other conditions, withdrawal without notice, and to any specific listing conditions imposed by our principals.