

Professional Office, Surgical Center, Retail Space in Downtown



Lease Rate	\$1.15 - 1.35 SF/MONTH
-------------------	-----------------------------------

OFFERING SUMMARY

Building Size:	16,565 SF
Available SF:	798 - 5,278 SF
Utilities:	\$0.37/SF
TI Allowance:	Negotiable
Lot Size:	0.988 Acres
Year Built:	1983
Renovated:	2023
Zoning:	C-P
Market:	Downtown Fresno
Submarket:	Community Regional Medical Center

PROPERTY HIGHLIGHTS

- 142 FREE Downtown Parking Spaces On Site
- Newly Remodeled Office & Medical/Dental Space
- Brand New Flooring, Paint, & LED Lights w/ TI's Available
- Ample Private Parking (4/1,000 SF) | Additional Street Parking
- Multiple Configurations Available w/ Ample Parking
- Prime Location in Downtown Fresno @ Signalized Intersection
- First Class Finishes | Spaces Can Be Combined
- Flexible Floorplan w/ Improvements Available
- Multiple Access Points | Flexible C-P Zoning
- Nearby Access to Highway 41, 99, 168, & 180
- Visible Tulare St Frontage w/ Corner Monument Signage
- Busy & Established Corridor w/ Retail Growth
- Close Proximity to Traffic Generators & Hospital
- Great Access & Visibility w/ High Level of Consumer Traffic

Jared Ennis
 CalDRE #01945284
 Executive Vice President
 jared@centralcacommercial.com
 559.705.1000

Kevin Land
 CalDRE #01516541
 Executive Managing Director
 kevin@centralcacommercial.com
 559.705.1000

Central CA Commercial
 Investments | Industrial | Office
 Multifamily | Retail | Land | Specialty
CentralCaCommercial.com

We obtained the information above from sources we believe to be reliable. However, we have not verified its accuracy and make no guarantee, warranty or representation about it. It is submitted subject to the possibility of errors, omissions, change of price, rental or other conditions, prior sale, lease or financing, or withdrawal without notice. We include projections, opinions, assumptions or estimates for example only, and they may not represent current or future performance of the property. You and your tax and legal advisors should conduct your own investigation of the property and transaction.

Professional Office, Surgical Center, Retail Space in Downtown

PROPERTY DESCRIPTION

Professional Office complex offering ± 798 SF to $\pm 4,103$ SF of multiple spaces for medical, government, professional, & general space. Includes 88 private on-site parking spaces and 54 street spaces in front of the property - all available at no cost! Located within the enterprise zone in downtown Fresno just blocks away from Fresno's Community Regional Medical Center, the Federal Courthouse and City Hall. The front entrance is complete, Power is stubbed, Fire sprinklers are existing, and HVAC ducting is present.

#101 ($\pm 2,030$ SF): Newly remodeled space with (7) private offices, waiting room w/ private entrance, reception area, kitchen, & (2) brand new private ADA restrooms.

#103 ($\pm 1,636$ SF): Newly remodeled space with a large open concept room, 1 rear private office, storage room & a brand new private ADA restroom.

#104 (± 798 SF): Open space with TI's available. Can be combined with #105.

#105 ($\pm 1,660$ SF): Former dental buildout with a large reception area, open rooms, 3 private rooms/offices, storage room and 2 entrances (private street access). Potential to be combined with Suite #104 for $\pm 2,458$ SF.

LOCATION DESCRIPTION

This property is located at the southwest corner of "S" Street and Mariposa Street extending to Tulare Street. It has easy access to Freeways 41, 180 and Highway 99. It is also just blocks away from Fresno's Community Regional Medical Center. Prime signalized location offering ample parking and easy access to Highway 99, 41, 180, and 168 off/on ramps.



Jared Ennis

CalDRE #01945284

Executive Vice President

jared@centralcacommercial.com

559.705.1000

Kevin Land

CalDRE #01516541

Executive Managing Director

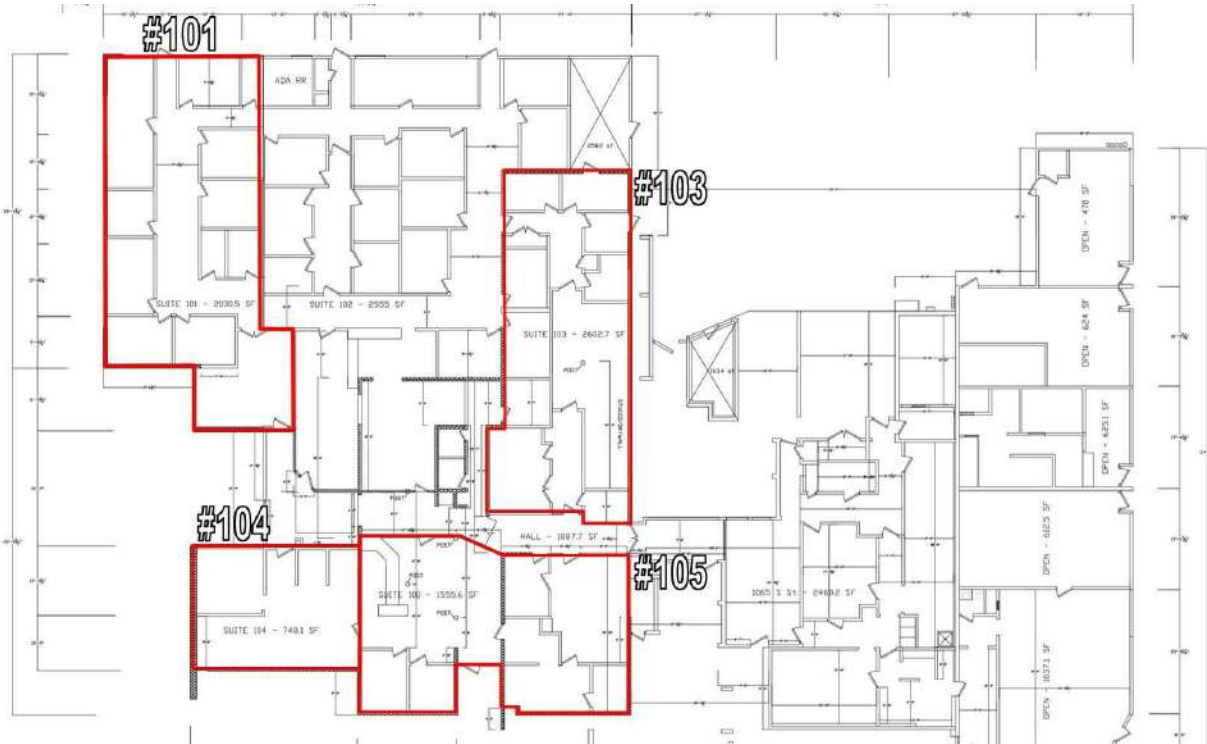
kevin@centralcacommercial.com

559.705.1000

Central CA Commercial
Investments | Industrial | Office
Multifamily | Retail | Land | Specialty
CentralCaCommercial.com

We obtained the information above from sources we believe to be reliable. However, we have not verified its accuracy and make no guarantee, warranty or representation about it. It is submitted subject to the possibility of errors, omissions, change of price, rental or other conditions, prior sale, lease or financing, or withdrawal without notice. We include projections, opinions, assumptions or estimates for example only, and they may not represent current or future performance of the property. You and your tax and legal advisors should conduct your own investigation of the property and transaction.

Professional Office, Surgical Center, Retail Space in Downtown



LEASE INFORMATION

Lease Type:	CAOE: \$0.37/SF/Month	Lease Term:	Negotiable
Total Space:	798 - 5,278 SF	Lease Rate:	\$1.15 - \$1.35 SF/month

AVAILABLE SPACES

SUITE	SIZE (SF)	LEASE TYPE	LEASE RATE	DESCRIPTION
Move-In Ready: Suite #101	2,030 SF	CAOE: \$0.37/SF/Month	\$1.35 SF/month	±2,030 SF: Newly remodeled space with (7) private offices, waiting room w/ private entrance, reception area, kitchen, & (2) brand new private ADA restrooms.
Brand New Remodel: Suite #103	1,636 - 5,278 SF	CAOE: \$0.37/SF/Month	\$1.35 SF/month	Move in Ready: 1,433 SF. The space consist of (1) private office, (1) storage room, large open group room, private restroom and staff kitchen. Flooring Allowance Available.
TI's Available: Suite #104	798 - 2,631 SF	CAOE: \$0.37/SF/Month	\$1.15 SF/month	TI's Available: Existing Open Layout w/ 1 Office
TI's Available: Suite #105	1,660 - 2,631 SF	CAOE: \$0.37/SF/Month	\$1.15 SF/month	TI's Available: Full dentist build out. Consist of 1 reception area, 3 office and 2 exam rooms.

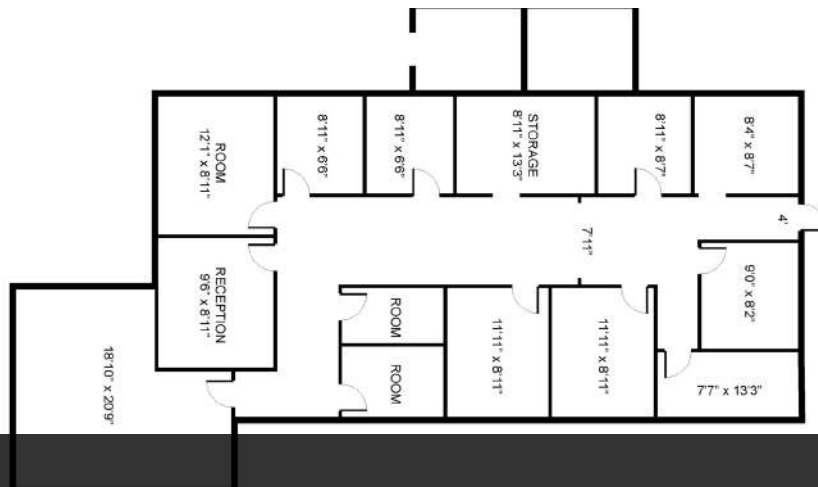
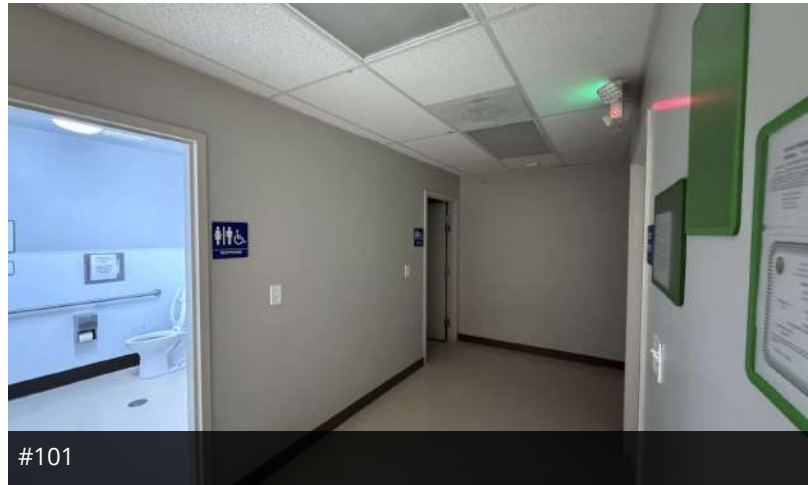
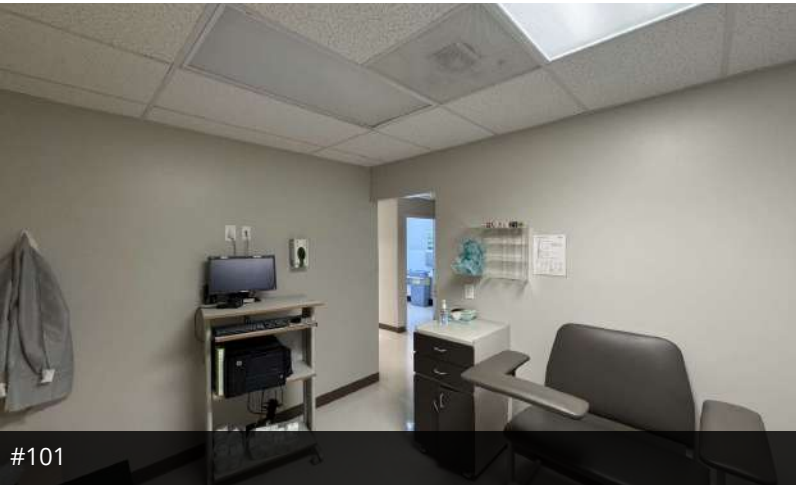
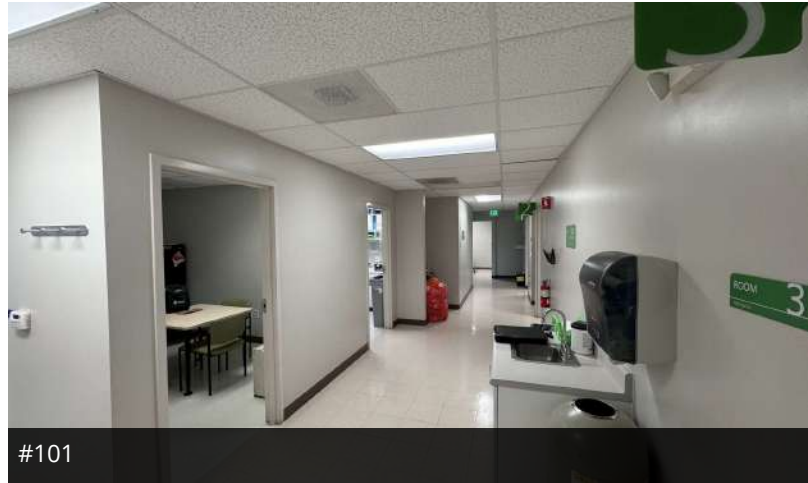
Jared Ennis
 CalDRE #01945284
 Executive Vice President
 jared@centralcacommercial.com
 559.705.1000

Kevin Land
 CalDRE #01516541
 Executive Managing Director
 kevin@centralcacommercial.com
 559.705.1000

Central CA Commercial
 Investments | Industrial | Office
 Multifamily | Retail | Land | Specialty
CentralCaCommercial.com

We obtained the information above from sources we believe to be reliable. However, we have not verified its accuracy and make no guarantee, warranty or representation about it. It is submitted subject to the possibility of errors, omissions, change of price, rental or other conditions, prior sale, lease or financing, or withdrawal without notice. We include projections, opinions, assumptions or estimates for example only, and they may not represent current or future performance of the property. You and your tax and legal advisors should conduct your own investigation of the property and transaction.

Professional Office, Surgical Center, Retail Space in Downtown



Jared Ennis
CalDRE #01945284
Executive Vice President
jared@centralcacommercial.com
559.705.1000

Kevin Land
CalDRE #01516541
Executive Managing Director
kevin@centralcacommercial.com
559.705.1000

Central CA Commercial
Investments | Industrial | Office
Multifamily | Retail | Land | Specialty
CentralCaCommercial.com

We obtained the information above from sources we believe to be reliable. However, we have not verified its accuracy and make no guarantee, warranty or representation about it. It is submitted subject to the possibility of errors, omissions, change of price, rental or other conditions, prior sale, lease or financing, or withdrawal without notice. We include projections, opinions, assumptions or estimates for example only, and they may not represent current or future performance of the property. You and your tax and legal advisors should conduct your own investigation of the property and transaction.

Professional Office, Surgical Center, Retail Space in Downtown



#103



#103



#103



#103



#103



#103

Jared Ennis
CalDRE #01945284
Executive Vice President
jared@centralcommercial.com
559.705.1000

Kevin Land
CalDRE #01516541
Executive Managing Director
kevin@centralcommercial.com
559.705.1000

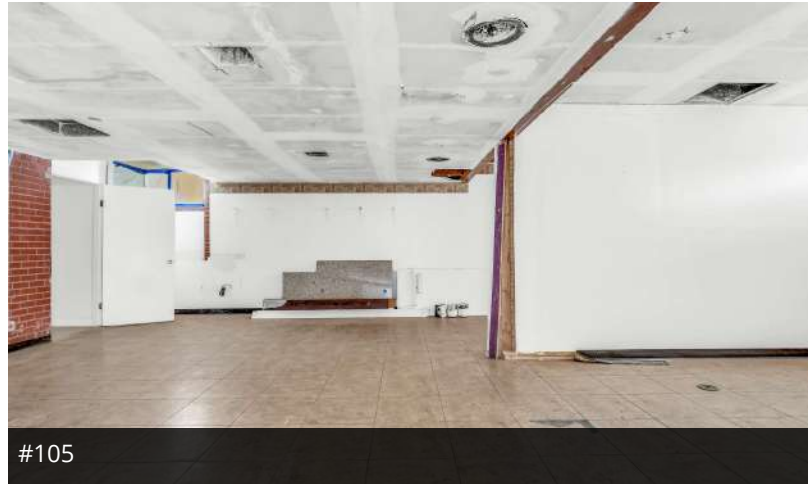
Central CA Commercial
Investments | Industrial | Office
Multifamily | Retail | Land | Specialty
CentralCaCommercial.com

We obtained the information above from sources we believe to be reliable. However, we have not verified its accuracy and make no guarantee, warranty or representation about it. It is submitted subject to the possibility of errors, omissions, change of price, rental or other conditions, prior sale, lease or financing, or withdrawal without notice. We include projections, opinions, assumptions or estimates for example only, and they may not represent current or future performance of the property. You and your tax and legal advisors should conduct your own investigation of the property and transaction.

Professional Office, Surgical Center, Retail Space in Downtown



#105



#105



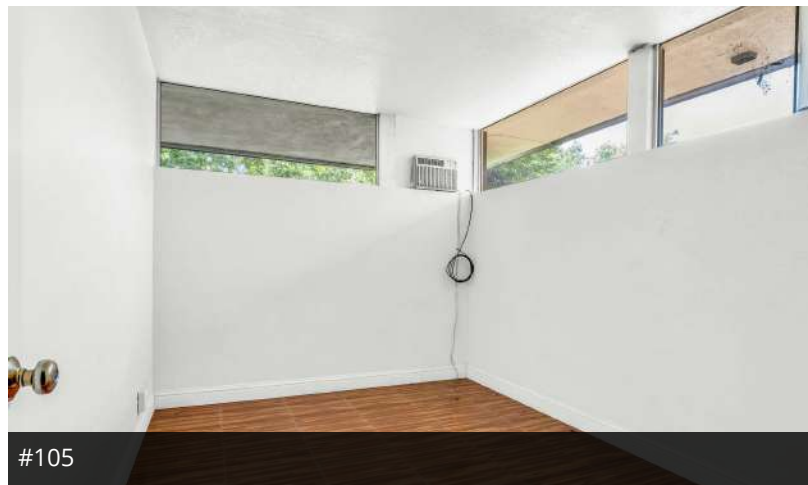
#105



#105



#105



#105

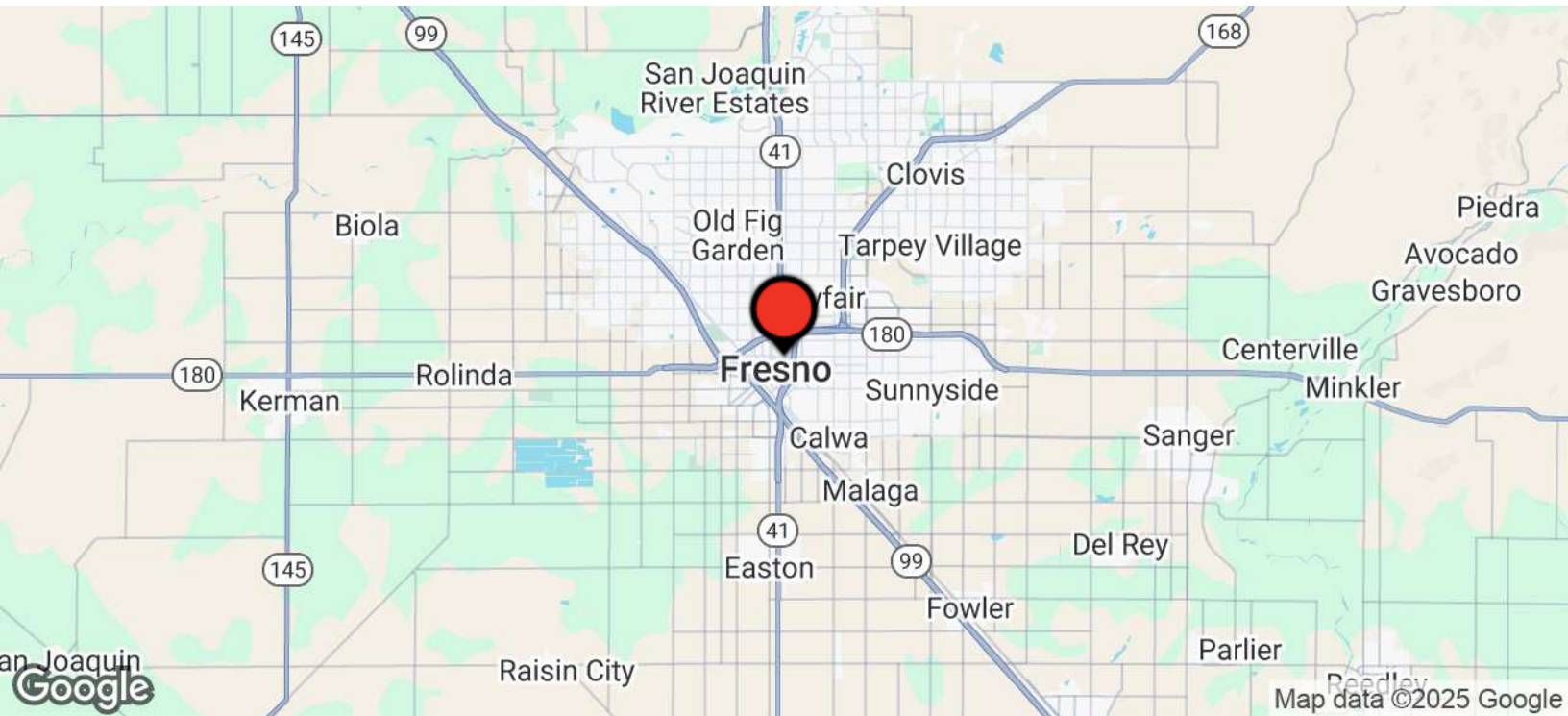
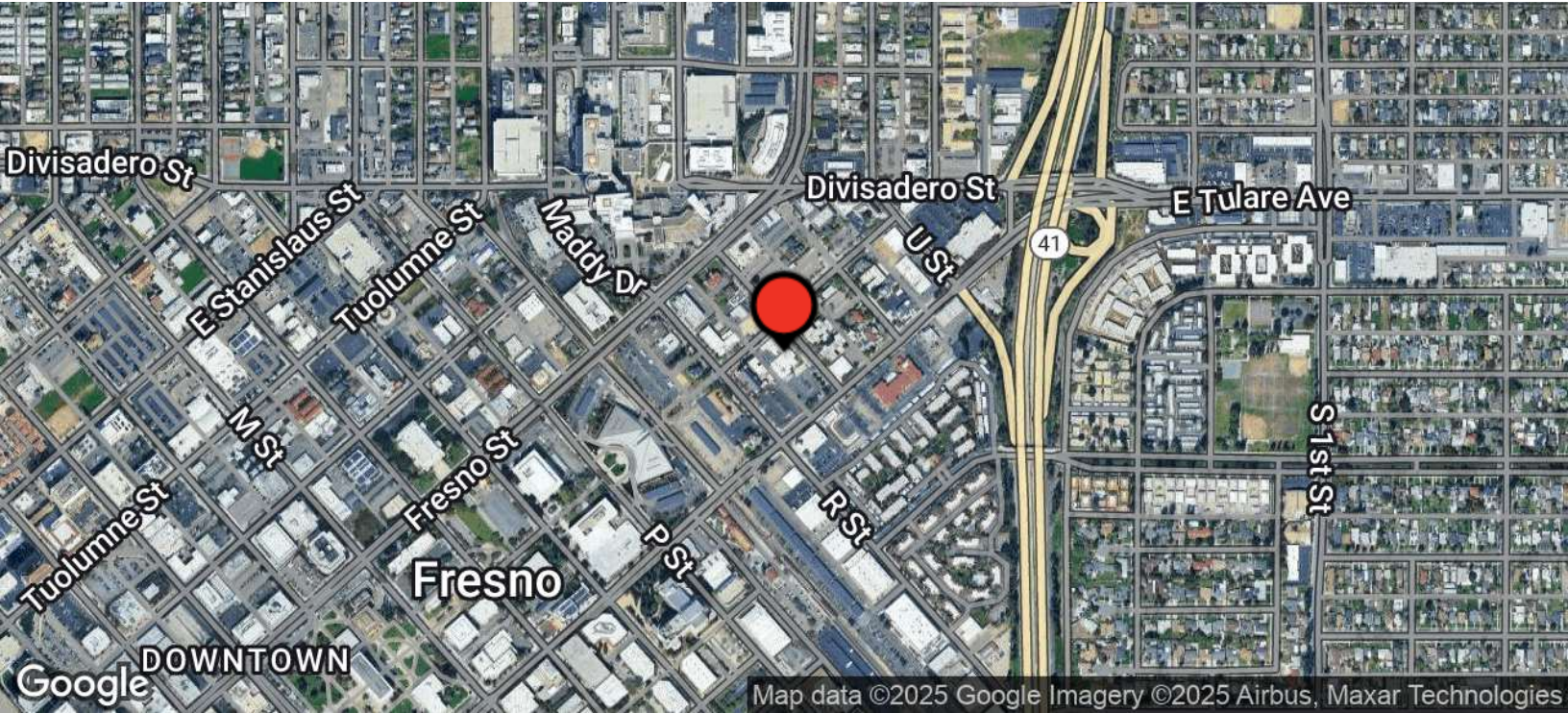
Jared Ennis
CalDRE #01945284
Executive Vice President
jared@centralcacommercial.com
559.705.1000

Kevin Land
CalDRE #01516541
Executive Managing Director
kevin@centralcacommercial.com
559.705.1000

Central CA Commercial
Investments | Industrial | Office
Multifamily | Retail | Land | Specialty
CentralCaCommercial.com

We obtained the information above from sources we believe to be reliable. However, we have not verified its accuracy and make no guarantee, warranty or representation about it. It is submitted subject to the possibility of errors, omissions, change of price, rental or other conditions, prior sale, lease or financing, or withdrawal without notice. We include projections, opinions, assumptions or estimates for example only, and they may not represent current or future performance of the property. You and your tax and legal advisors should conduct your own investigation of the property and transaction.

Professional Office, Surgical Center, Retail Space in Downtown



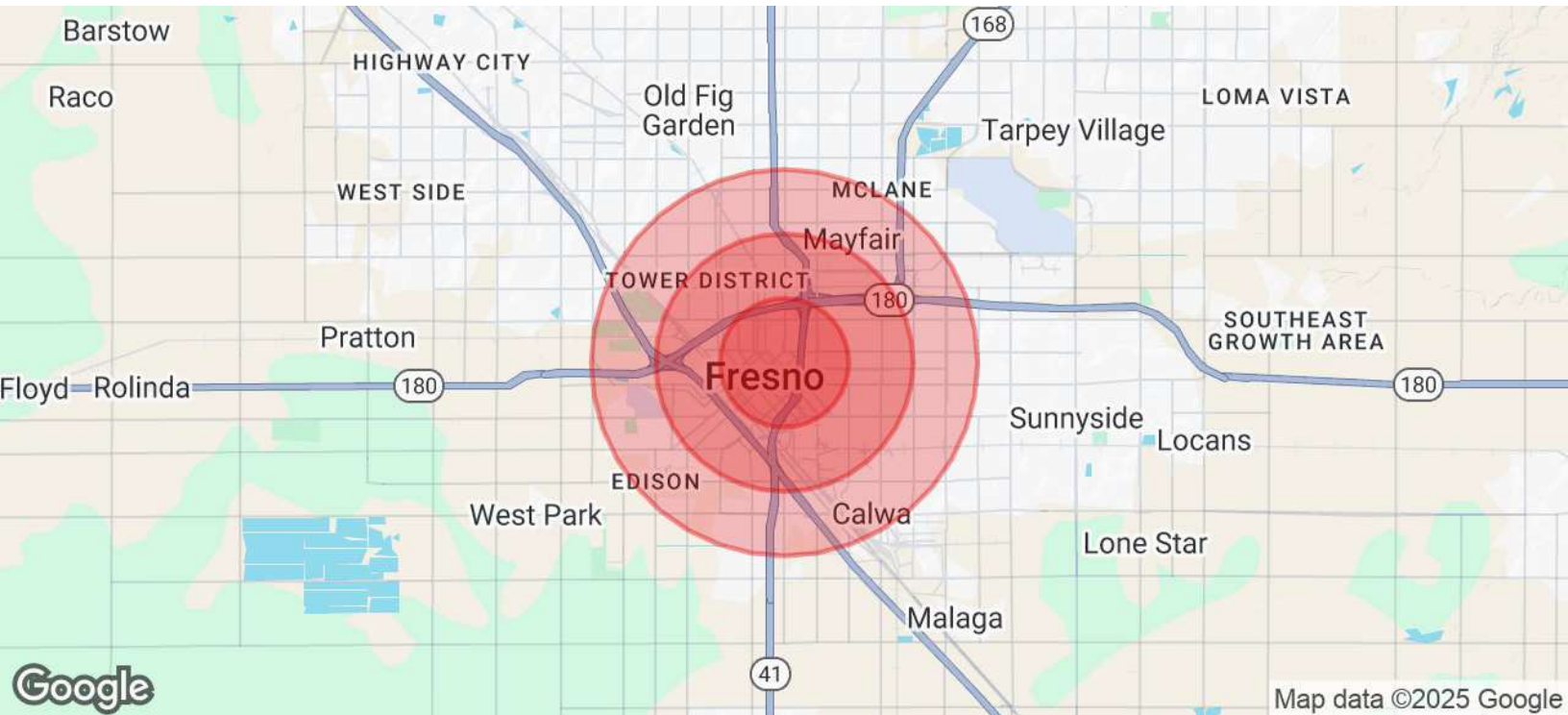
Jared Ennis
CalDRE #01945284
Executive Vice President
jared@centralcacommercial.com
559.705.1000

Kevin Land
CalDRE #01516541
Executive Managing Director
kevin@centralcacommercial.com
559.705.1000

Central CA Commercial
Investments | Industrial | Office
Multifamily | Retail | Land | Specialty
CentralCaCommercial.com

We obtained the information above from sources we believe to be reliable. However, we have not verified its accuracy and make no guarantee, warranty or representation about it. It is submitted subject to the possibility of errors, omissions, change of price, rental or other conditions, prior sale, lease or financing, or withdrawal without notice. We include projections, opinions, assumptions or estimates for example only, and they may not represent current or future performance of the property. You and your tax and legal advisors should conduct your own investigation of the property and transaction.

Professional Office, Surgical Center, Retail Space in Downtown



POPULATION	1 MILE	2 MILES	3 MILES
Total Population	22,093	77,587	159,374
Average Age	26.5	25.9	26.6
Average Age (Male)	26.4	25.4	26.1
Average Age (Female)	28.1	27.2	27.7

HOUSEHOLDS & INCOME	1 MILE	2 MILES	3 MILES
Total Households	5,613	20,949	44,961
# of Persons per HH	3.9	3.7	3.5
Average HH Income	\$34,132	\$35,277	\$38,096
Average House Value	\$220,842	\$231,724	\$215,064

ETHNICITY (%)	1 MILE	2 MILES	3 MILES
Hispanic	72.1%	68.4%	64.6%

Jared Ennis
 CalDRE #01945284
 Executive Vice President
 jared@centralcommercial.com
 559.705.1000

Kevin Land
 CalDRE #01516541
 Executive Managing Director
 kevin@centralcommercial.com
 559.705.1000

Central CA Commercial
 Investments | Industrial | Office
 Multifamily | Retail | Land | Specialty
CentralCaCommercial.com

We obtained the information above from sources we believe to be reliable. However, we have not verified its accuracy and make no guarantee, warranty or representation about it. It is submitted subject to the possibility of errors, omissions, change of price, rental or other conditions, prior sale, lease or financing, or withdrawal without notice. We include projections, opinions, assumptions or estimates for example only, and they may not represent current or future performance of the property. You and your tax and legal advisors should conduct your own investigation of the property and transaction.