

Available For Lease

40,000 SF Commercial Space

1100 E. 55th Street | Cleveland, OH



CONTACT



Terry Coyne
Vice Chairman
216.218.0259
Terry.Coyne@nmrk.com
Licensed Real Estate Broker

NEWMARK

The information contained herein has been obtained from sources deemed reliable but has not been verified and no guarantee, warranty or representation, either express or implied, is made with respect to such information. Terms of sale or lease and availability are subject to change or withdrawal without notice.

Terry **COYNE**.com



Lease Rate: \$5.00/SF NNN

Available Space For Lease



20,000 SF Office
20,000 SF Warehouse
40,000 SF Total



Warehouse Space
20,000 SF featuring three docks and one garage with two drive-in doors, ideal for various industrial and storage needs.



Office Space
20,000 SF with stunning views of Lake Erie, perfect for creating a productive and inspiring workplace.



Ceiling Height
16' clear height, offering ample vertical space.



Weight Capacity
Designed to handle up to 125 lb/SF, ensuring robust support for heavy equipment and storage.



Entrance
The property boasts a separate entrance from other tenants, providing privacy and exclusivity for your business operations.



Parking
Plentiful parking available for employees and visitors, ensuring convenience and ease of access.



Renovations
New roof planned for 2025

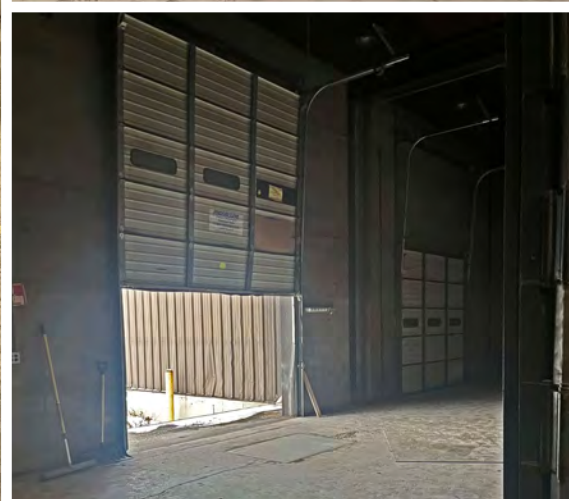
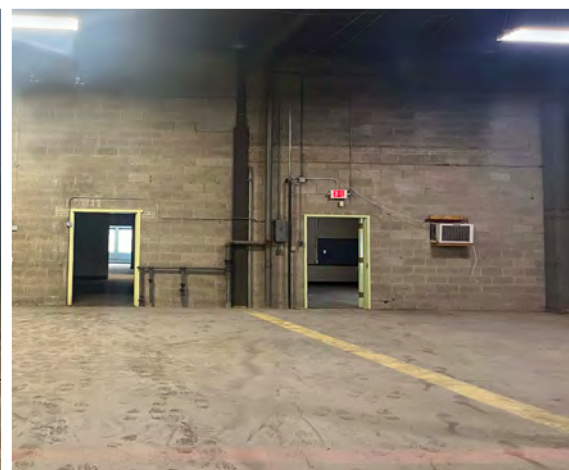
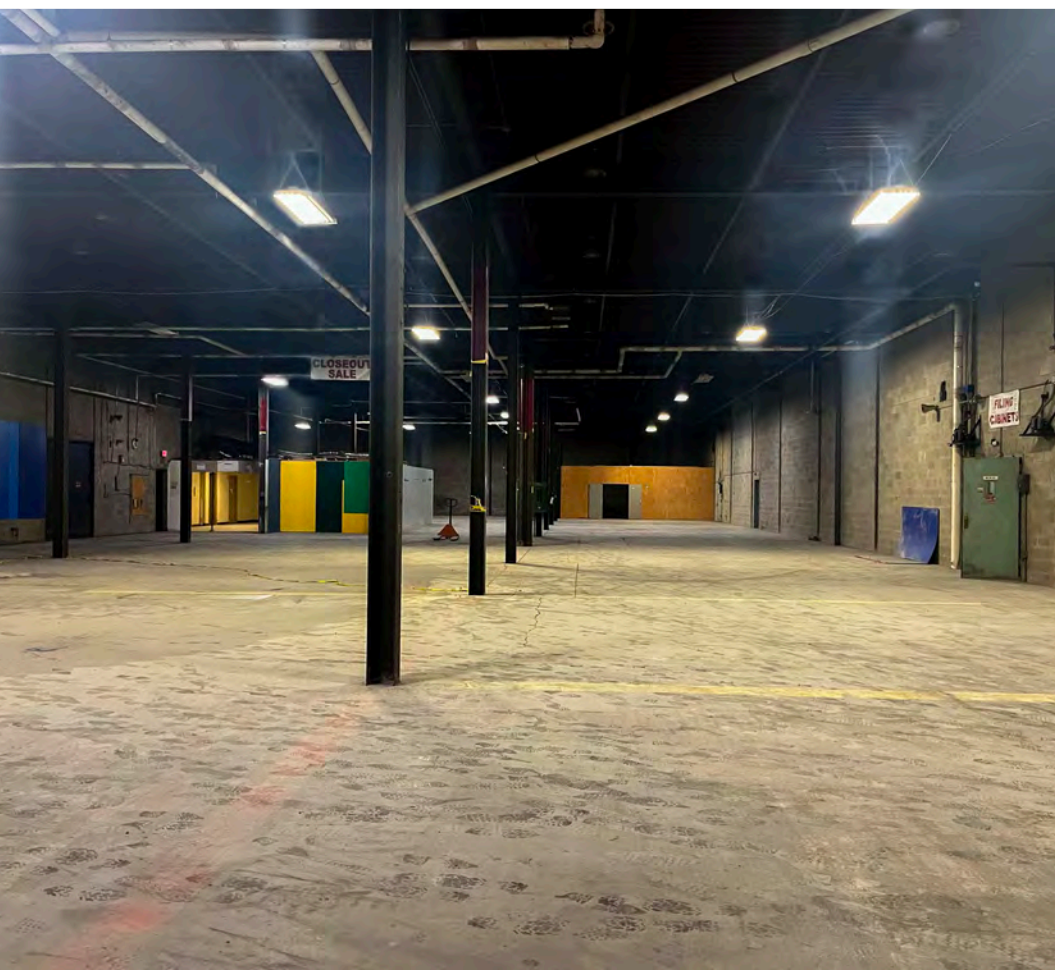


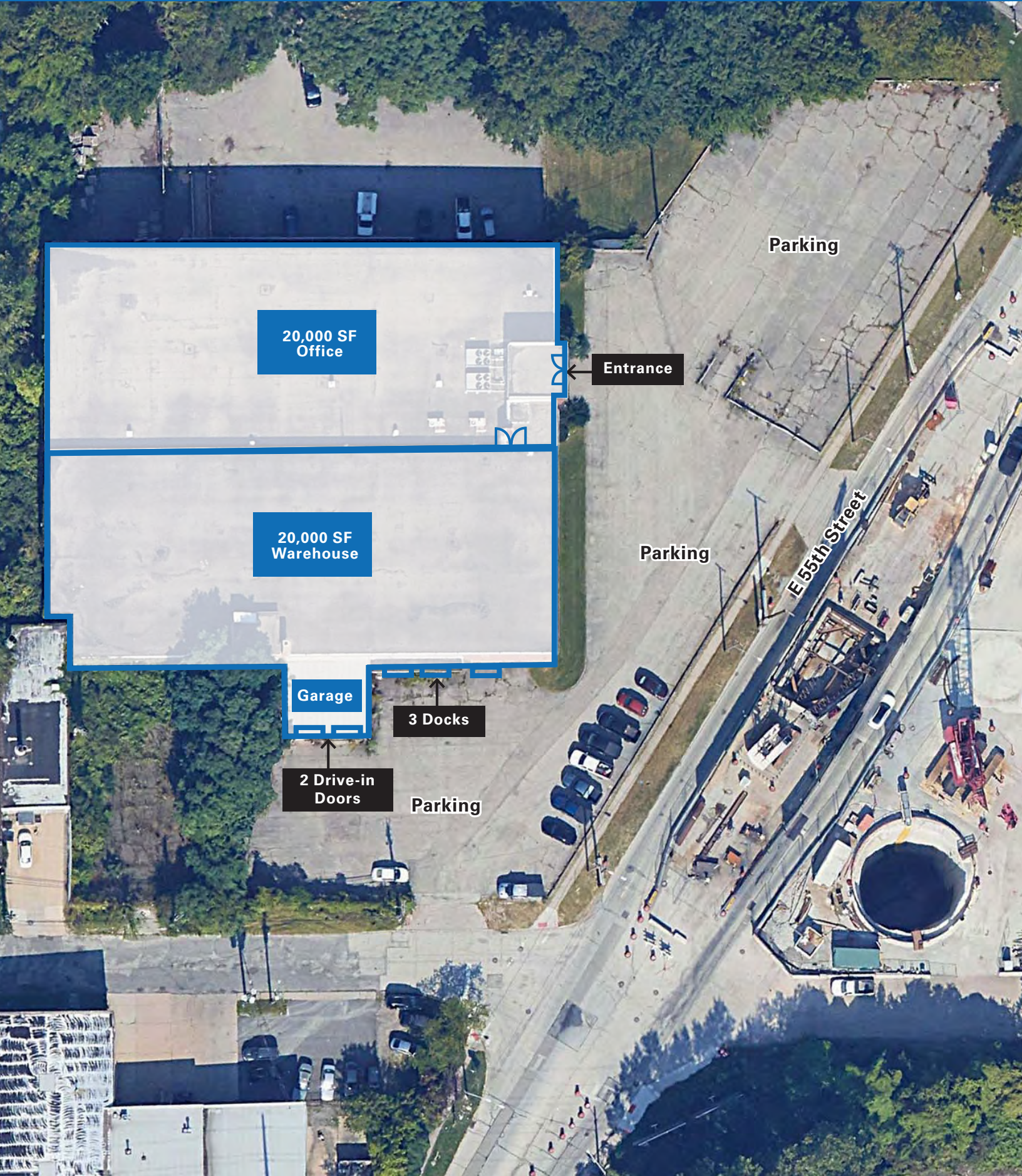
Freeway Proximity
Immediate access to I-90 and State Route 2



















1100 E. 55th Street | Cleveland, OH

Warehouse Photos





KEY FACTS	EDUCATION	INCOME	EMPLOYMENT	
 1,142,227 Population	 24.3% High School Diploma	 \$59,093 Median Household Income	 63.7% White Collar	 17.2% Services
 40.6 Median Age	 27.4% Some College	 \$40,297 Per Capita Income	 19.2% Blue Collar	 5.0% Unemployment Rate
 515,800 Households	 36.0% Bachelors/ Graduate/ Professional Degree	COMMUTERS	BUSINESS	
 \$50,918 Median Disposable Income		 15.2% Spend 7+ hours commuting to and from work per week	 47,727 Total Businesses	 887,436 Total Employees

