

1504

EUREKA ROAD
Roseville, California

AVAILABLE FOR LEASE



PROPERTY HIGHLIGHTS



PRESTIGIOUS EUREKA CORPORATE



ON-SITE OUTDOOR COURTYARD



EXTREMELY WELL-MAINTAINED



TWO COMMON AREA CONFERENCE ROOMS



FITNESS STUDIO WITH SHOWERS



RECENTLY REMODELED COMMON AREAS



FIBER SERVICES AVAILABLE FROM BOTH CONSOLIDATED COMMUNICATIONS AND COMCAST BUSINESS



ADJACENT TO ALL OF ROSEVILLE'S MOST POPULAR RESTAURANTS:

- MIKUNI
- PAUL MARTIN'S
- FAT'S
- UNIVERSITY OF BEER



LOCAL TO BOUTIQUE AND REGIONAL SHOPPING & SERVICES:

- WESTFIELD GALLERIA
- CREEKSIDE CENTER
- THE FOUNTAINS
- STARBUCKS

CITY OF ROSEVILLE



ROSEVILLE'S 2022 POPULATION IS ESTIMATED TO BE 149,141, PER U.S. CENSUS, WITH MEDIAN AGE OF 37.7 YEARS OLD.



ROSEVILLE WAS NAMED THE 8TH BEST PLACE TO LIVE IN AMERICA BY LIVABILITY.COM IN 2021.



GREAT QUALITY OF LIFE, SCHOOLS, HOUSING, BUSINESSES AND RETAIL.



ROSEVILLE OWNS AND OPERATES ITS UTILITIES, INCLUDING WATER, SEWER AND ELECTRIC. ROSEVILLE ELECTRIC PLAYS A BIG ROLE IN ATTRACTING BUSINESS WITH ITS COMPETITIVE RATES AND RELIABLE SERVICE.





Shared Fitness Center



Common Conference Room



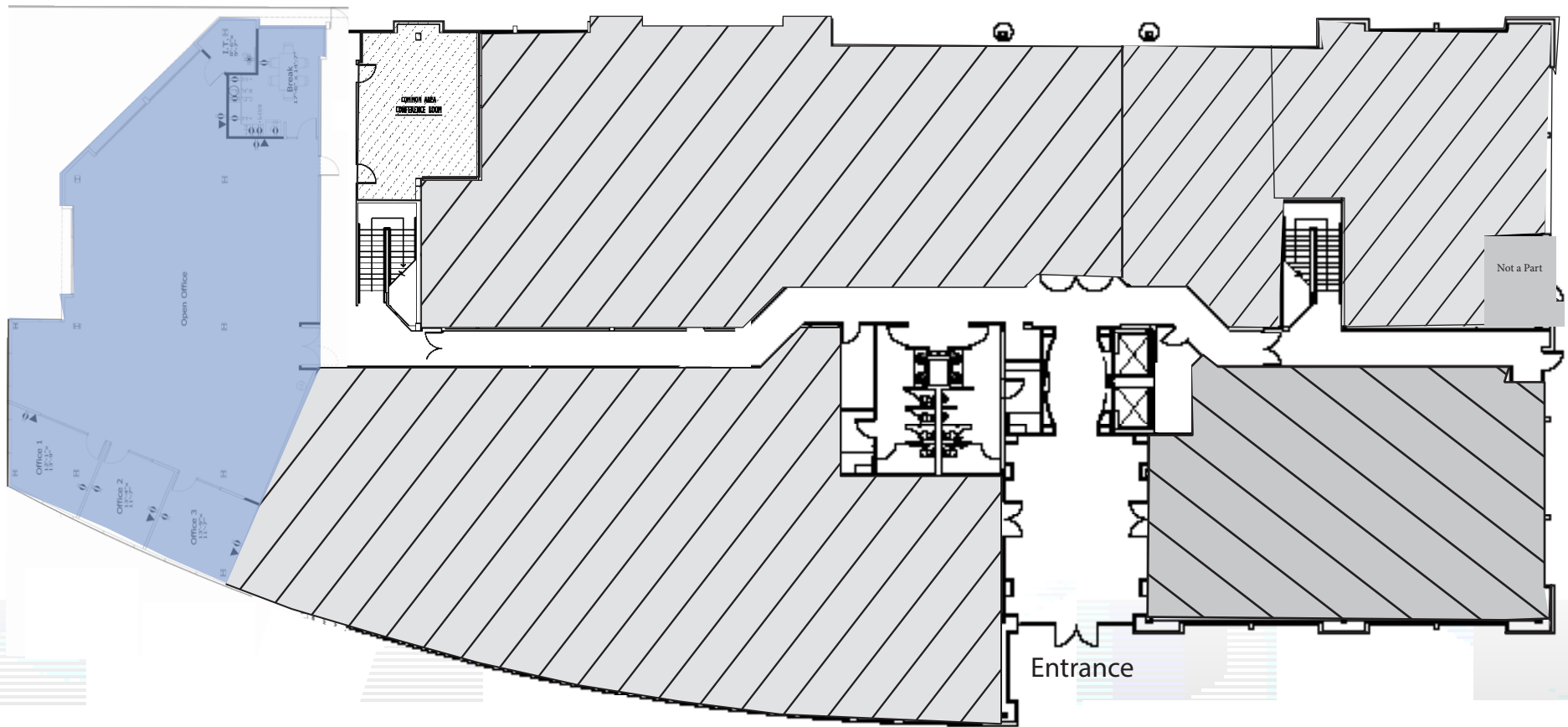
FOR LEASE | 1504 EUREKA ROAD

AVAILABLE SUITES FOR LEASE

FLOOR PLAN
1ST FLOOR

SUITE 170 - ±3,796 RSF
(DIVISIBLE TO ±1,886 RSF)

LEASE RATE: \$2.50 PSF, FULL SERVICE



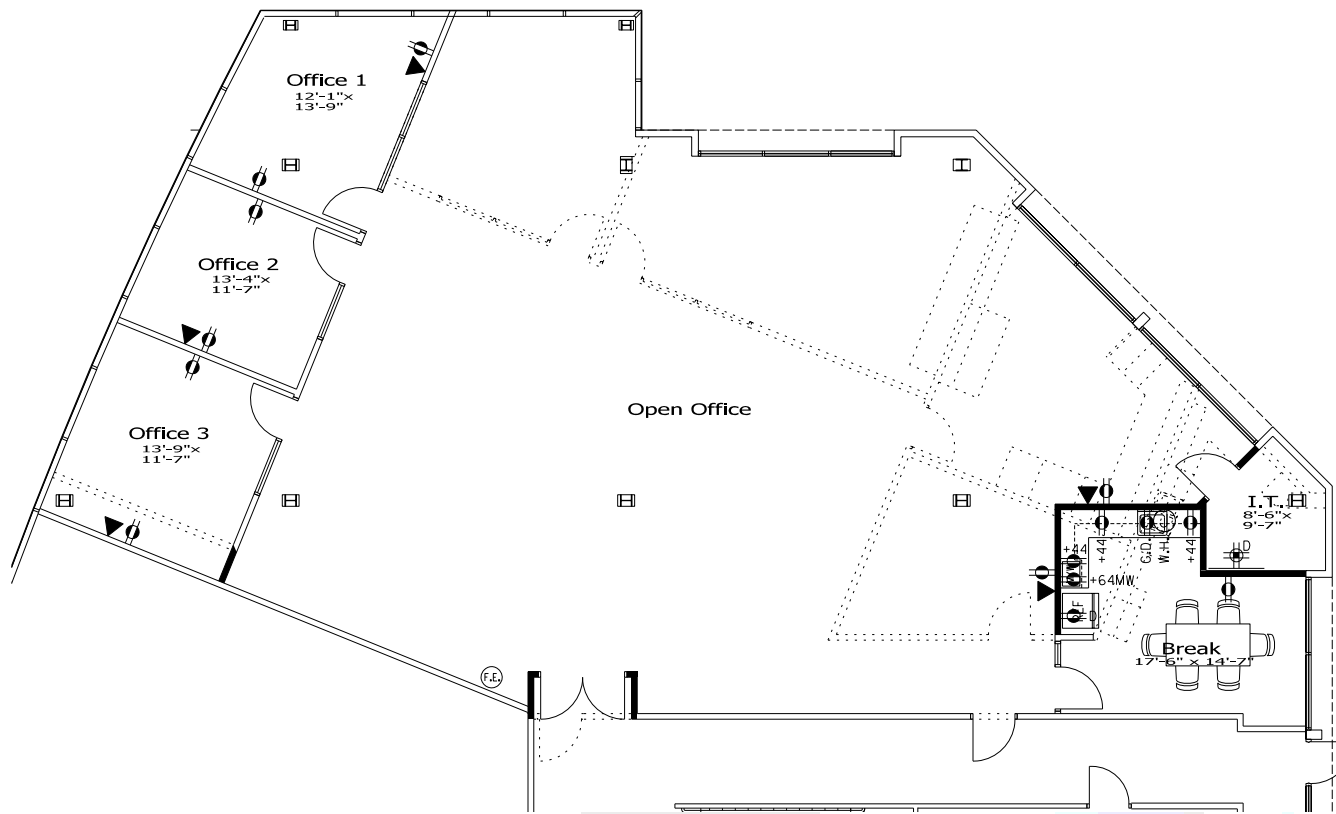
FLOOR PLAN IS NOT TO SCALE -- ALL DIMENSIONS ARE APPROXIMATE

AVAILABLE SUITES FOR LEASE

FLOOR PLAN
SUITE 170

SUITE 170 - ±3,796 RSF
(DIVISIBLE TO ±1,886 RSF)

LEASE RATE: \$2.50 PSF, FULL SERVICE



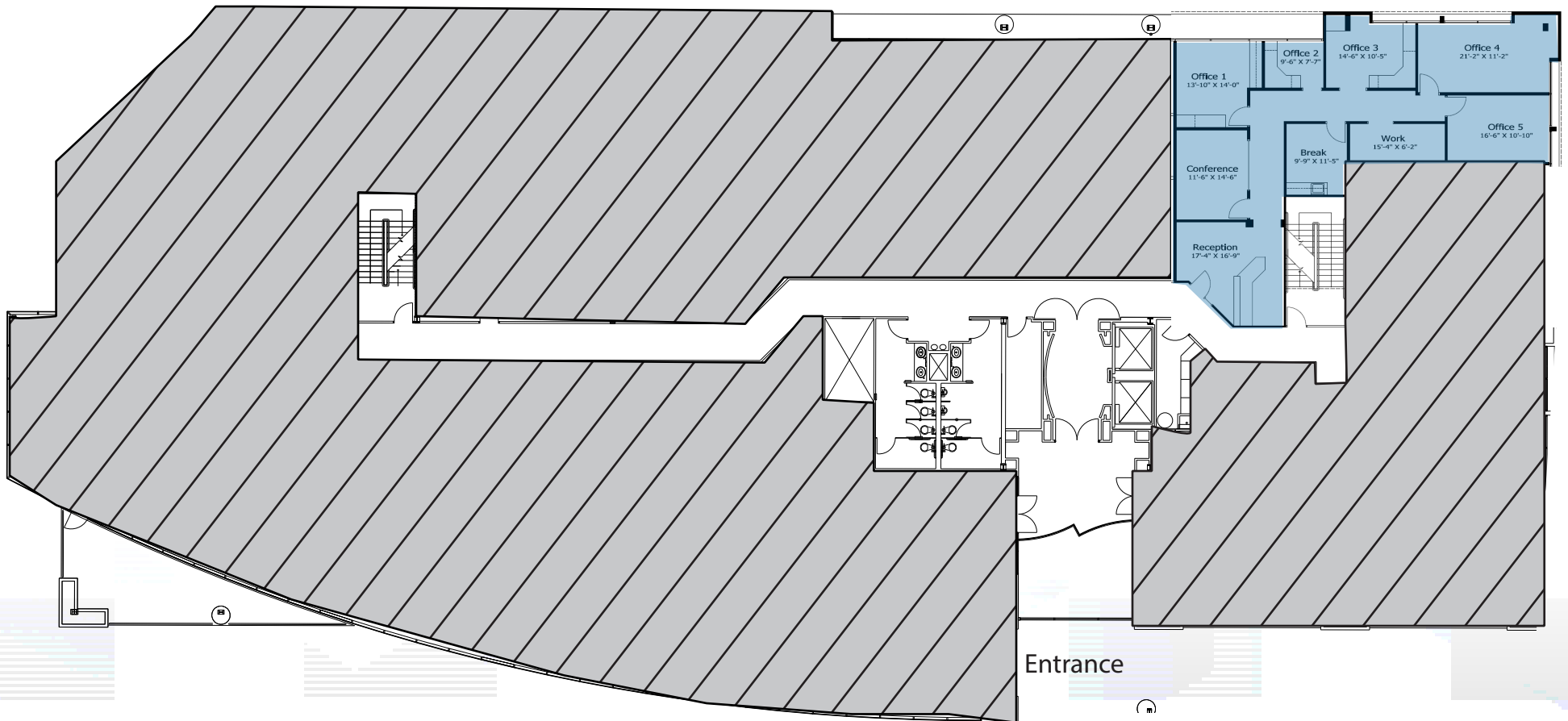
FLOOR PLAN IS NOT TO SCALE -- ALL DIMENSIONS ARE APPROXIMATE.

AVAILABLE SUITES FOR LEASE

FLOOR PLAN
3RD FLOOR

SUITE 230 - ±2,093 RSF
AVAILABLE NOW

LEASE RATE: \$2.50 PSF, FULL SERVICE



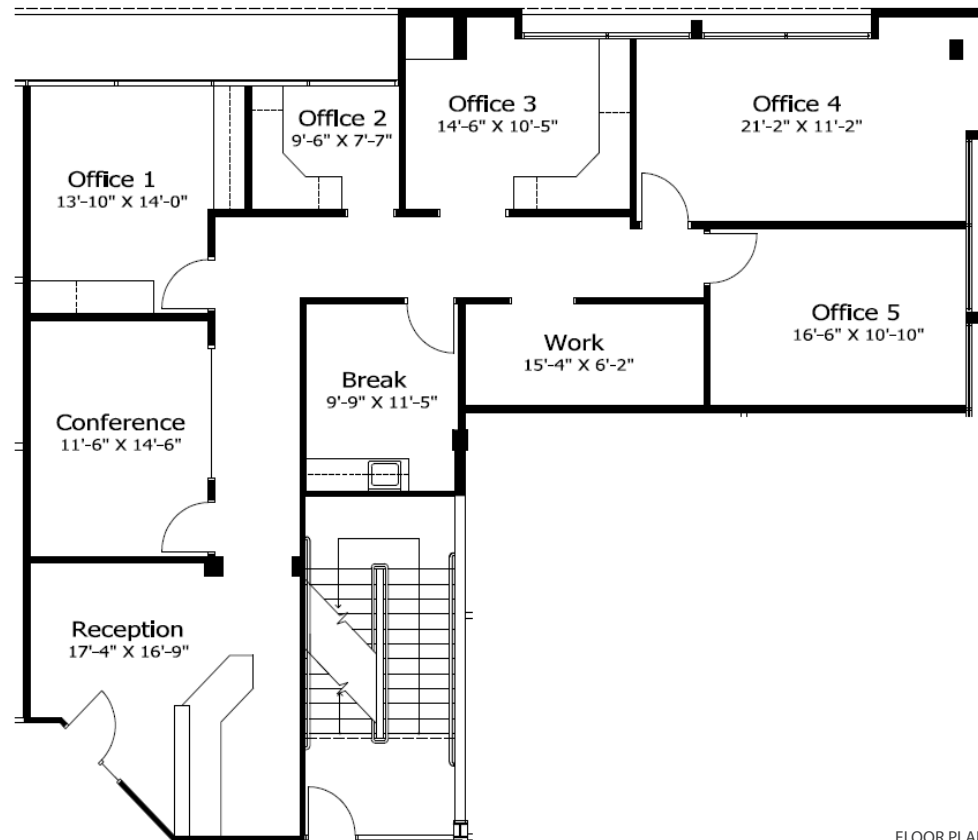
FLOOR PLAN IS NOT TO SCALE -- ALL DIMENSIONS ARE APPROXIMATE

AVAILABLE SUITES FOR LEASE

FLOOR PLAN
SUITE 230

SUITE 230 - ±2,093 RSF
AVAILABLE

LEASE RATE: \$2.50 PSF, FULL SERVICE



FLOOR PLAN IS NOT TO SCALE -- ALL DIMENSIONS ARE APPROXIMATE.

EXCLUSIVELY LISTED BY:

KEVIN LARSCHIED

Executive Vice President

Lic. 00816790

+1 916 784 4818

kevin.larscheid@cbre.com

SCOTT RUSH

First Vice President

Lic. 01228497

+1 916 781 4802

scott.rush@cbre.com

PHILLIP LARSCHIED

Sales Associate

Lic. 02434984

+1 916 781 4848

phillip.larscheid@cbre.com

www.cbre.com/kevin.larscheid

© 2025 CBRE, Inc. All rights reserved. This information has been obtained from sources believed reliable, but has not been verified for accuracy or completeness. You should conduct a careful, independent investigation of the property and verify all information. Any reliance on this information is solely at your own risk. CBRE and the CBRE logo are service marks of CBRE, Inc. All other marks displayed on this document are the property of their respective owners, and the use of such logos does not imply any affiliation with or endorsement of CBRE. Photos herein are the property of their respective owners. Use of these images without the express written consent of the owner is prohibited.

