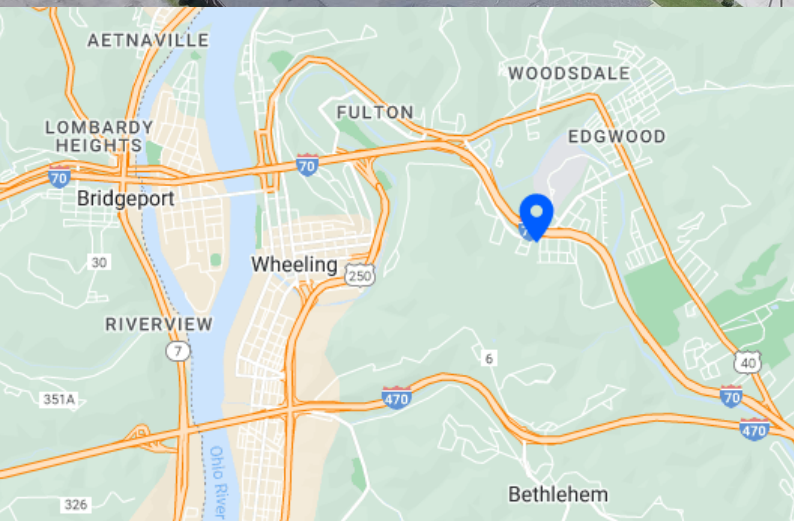


FOR SALE OR LEASE (GROUND)

LAND AVAILABLE

1031-1033 Mt DeChantal Rd, Wheeling WV 26003

Mt DeChantal Rd @ I-70



FEATURES:

- .86 acres of land
- For sale or ground lease
- Direct access off of Interstate 70
- Adjacent to Medical Office Park
- Under 1 mile to WVU Medicine/Wheeling Hospital and WVU Medicine Wellness Center
- Potential multiple means of ingress/egress
- Across the Interstate from Wheeling University
- Underserved Retail Corridor with strong supporting demographics

Century Realty

304.232.5411

century-realty.com

960 Penn Avenue, Site 1001, Pittsburgh, PA 15222

1233 Main Street, Suite 1500, Wheeling, WV 26003

Adam Weidner

aweidner@century-realty.com

304.232.5411

John Aderholt, Broker

jdaderholt@centuryequities.com

304.232.5411

LAND FOR SALE OR LEASE (GROUND)

1031-1033 Mt DeChantal Rd, Wheeling WV 26003



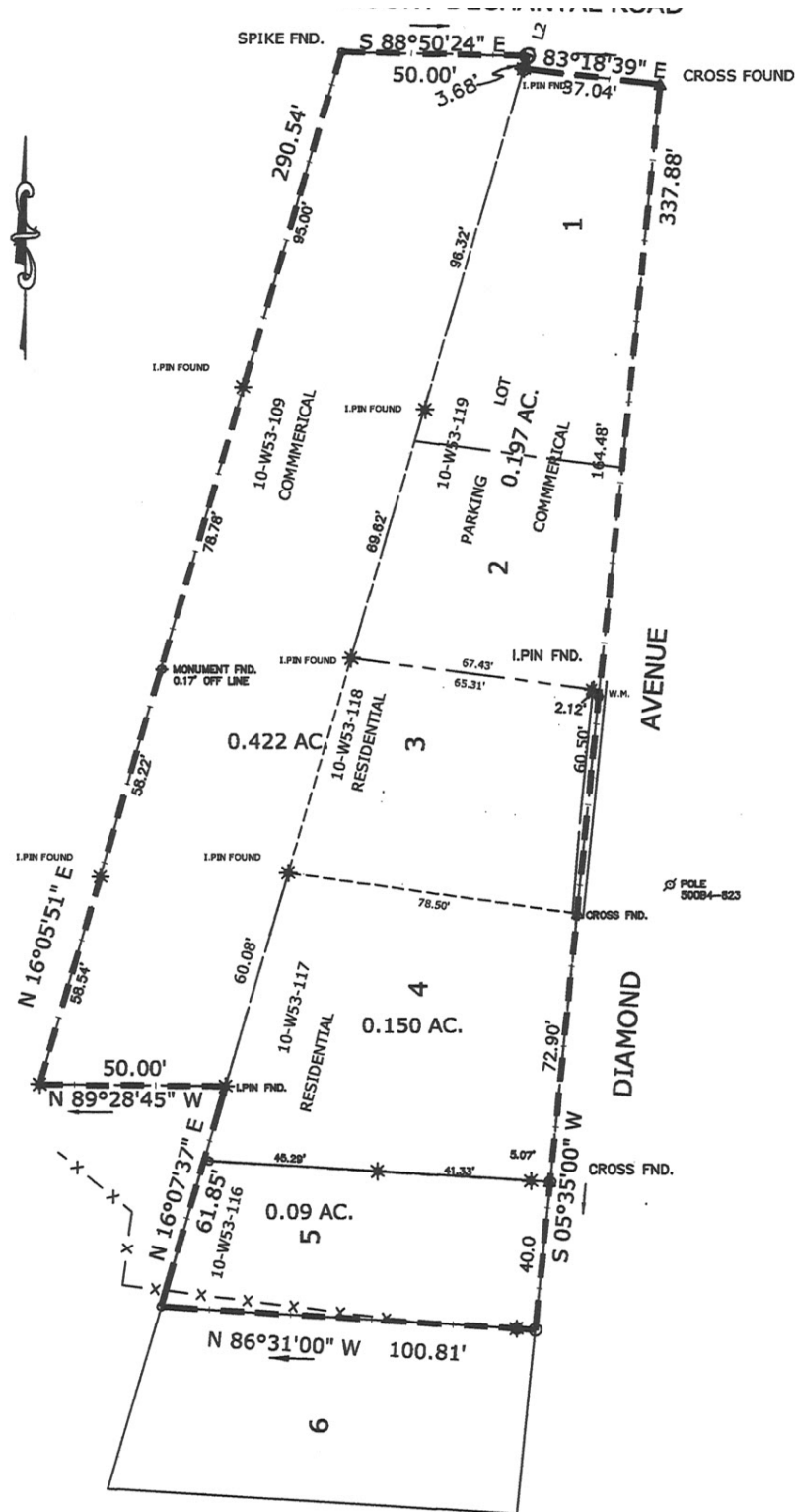
Adam Weidner
aweidner@century-realty.com
304.232.5411

John Aderholt, Broker
jdaderholt@centuryequities.com
304.232.5411

Century Realty
304.232.5411
century-realty.com

LAND FOR SALE OR LEASE (GROUND)

1031-1033 Mt DeChantal Rd, Wheeling WV 26003



Adam Weidner
 aweidner@century-realty.com
 304.232.5411

John Aderholt, Broker
 jaderholt@centuryequities.com
 304.232.5411

Century Realty
 304.232.5411
 century-realty.com



DEMOGRAPHICS	3 MILE	5 MILE	10 MILE
POPULATION	34,388	53,759	92,266
AVG. HOUSEHOLD INCOME	\$66,514	\$67,481	\$69,334
HOUSEHOLDS	15,360	23,621	39,612
DAYTIME EMPLOYMENT	31,126	38,605	52,765
CONSUMER SPENDING	\$398.8M	\$624.9M	\$1.1B

Adam Weidner
aweidner@century-realty.com
304.232.5411

John Aderholt, Broker
jdaderholt@centuryequities.com
304.232.5411

Century Realty
304.232.5411
century-realty.com