

1800 NE 26TH STREET
WILTON MANORS, FLORIDA



WATERFRONT OFFICE/MEDICAL BUILDING | AVAILABLE FOR LEASE



Downtown
Fort Lauderdale

Interstate 95



1800 NE 26th St.
Wilton Manors, FL 33305



PROPERTY HIGHLIGHTS

- **Prime Location:** Strategically situated on large corner lot in the heart of Wilton Manors with excellent accessibility and signage visibility.
- **Versatile Space:** Perfect for offices, medical or professional services.
- **High Traffic Area:** Impressive daily traffic count ensures a steady flow of potential customers.
- **Building Improvements:** New metal roof installed 2023. Also features hurricane impact windows.

CONTACT

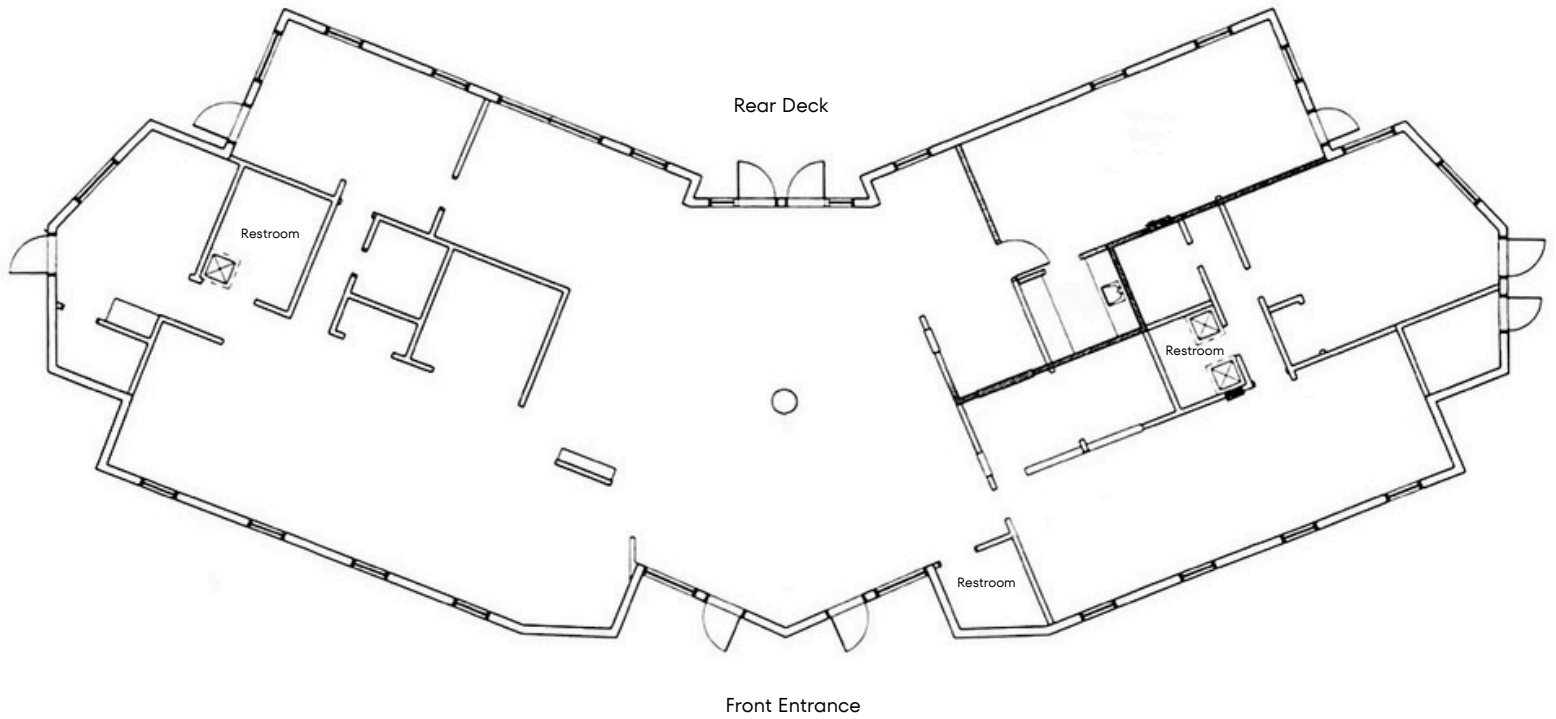
Vincent Vigliotti
561.350.7261
vinny@irgflorida.com



Intracoastal Realty Group, Inc.
2901 W Cypress Creek Rd, #112
Ft. Lauderdale, FL 33309
561.350.7261
info@irgflorida.com

1800 NE 26TH STREET WILTON MANORS, FLORIDA

FLOOR PLAN



BUILDING
SQUARE FOOTAGE

4,777 sf



LOT SIZE

0.42 acre



ZONING

B-2



LEASE PRICE

\$24.45 NNN
\$9.55 OPEX



LEASE TERMS

5 year



PARKING SPACES

19

Prime commercial office/medical building in the heart of Wilton Manors located on large corner lot with ample parking and 41' of water frontage. Boasting 4,777 square feet of interior space, it features a blend of open workspaces fostering collaboration and productivity.

Situated within close proximity to popular restaurants, trendy cafes, and boutique shops this property is able to attract a diverse customer base.

The strategic location and versatile layout of this office space presents an exceptional opportunity for businesses seeking a dynamic and functional workspace in a vibrant and highly desirable area.





1800 NE 26TH ST.
WILTON MANORS, FL

CONTACT

Vincent Vigliotti
561.350.7261
vinny@irgflorida.com



Intracoastal Realty Group, Inc.
2901 W Cypress Creek Rd, #112
Ft. Lauderdale, FL 33309

www.irgflorida.com