

# TOLL PLAZA BUSINESS PARK

6125 W SAM HOUSTON PKWY N, HOUSTON, TX 77041



**NORTHWEST INNERLOOP  
SUBMARKET**



**GREAT ACCESS TO BELTWAY 8  
AND US-290**



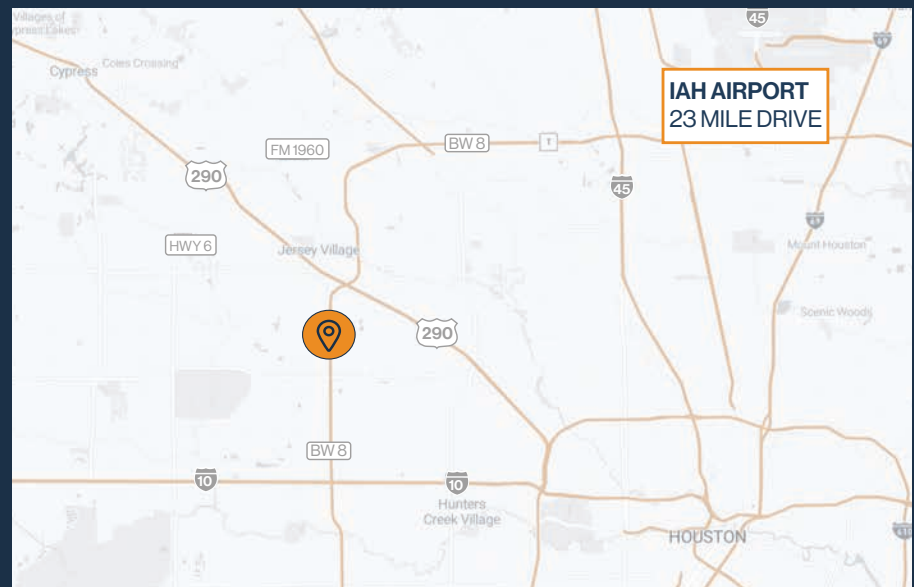
**24' CLEAR HEIGHT**



**OVERSIZED 12' X 14'  
GRADE-LEVEL DOORS**



**3,000 SF - 6,780 SF  
SUITES AVAILABLE**



**RYAN YOUNG**



281.584.3320



RYAN.YOUNG@FORT-COMPANIES.COM



**FORT**  
LEASING

This information is deemed reliable, however, Fort makes no guarantee, warranties, or representations as to the completeness or accuracy thereof.



## SITE PLAN



**RYAN YOUNG**



281.584.3320

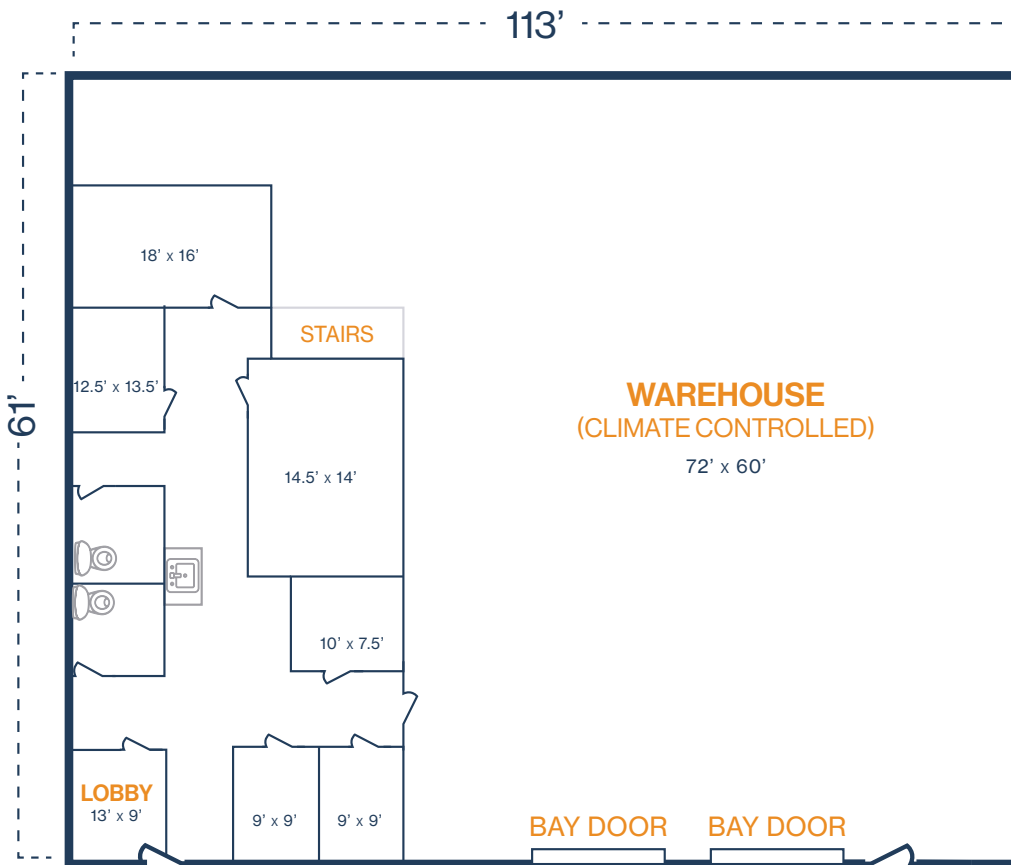


RYAN.YOUNG@FORT-COMPANIES.COM

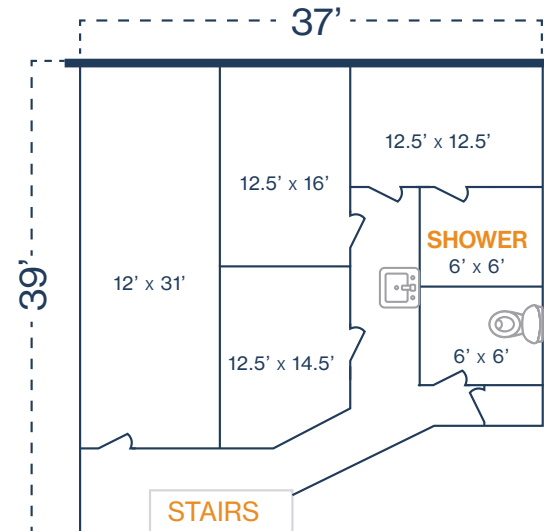


### FLOOR PLAN — AVAILABLE IMMEDIATELY

- » 6,780 SF Total Available
- » 2,202 SF Downstairs Office
- » 1,618 SF Upstairs Office
- » 4,578 SF Warehouse
- » (2) 12' x 14' Grade Level Doors



### UPSTAIRS:



\*\*All SF labels are approximations

**RYAN YOUNG**



281.584.3320

RYAN.YOUNG@FORT-COMPANIES.COM



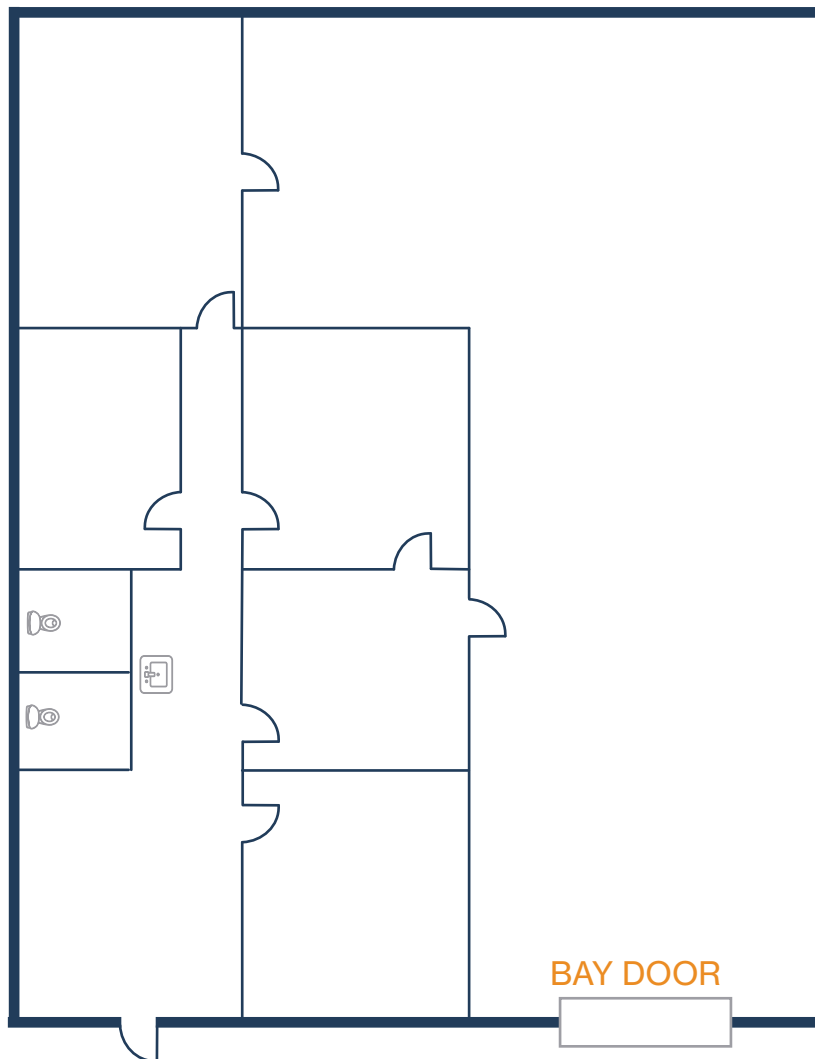
**FORT**  
LEASING

**TOLL PLAZA BUSINESS PARK**

6125 W Sam Houston Pkwy, Suite 404  
Houston, TX 77041

## FLOOR PLAN — AVAILABLE IMMEDIATELY

- » 3,000 SF Total Available
  - » 1,200 SF Office
  - » 1,800 SF Warehouse
- » (1) Grade Level Door



**RYAN YOUNG**



281.584.3320

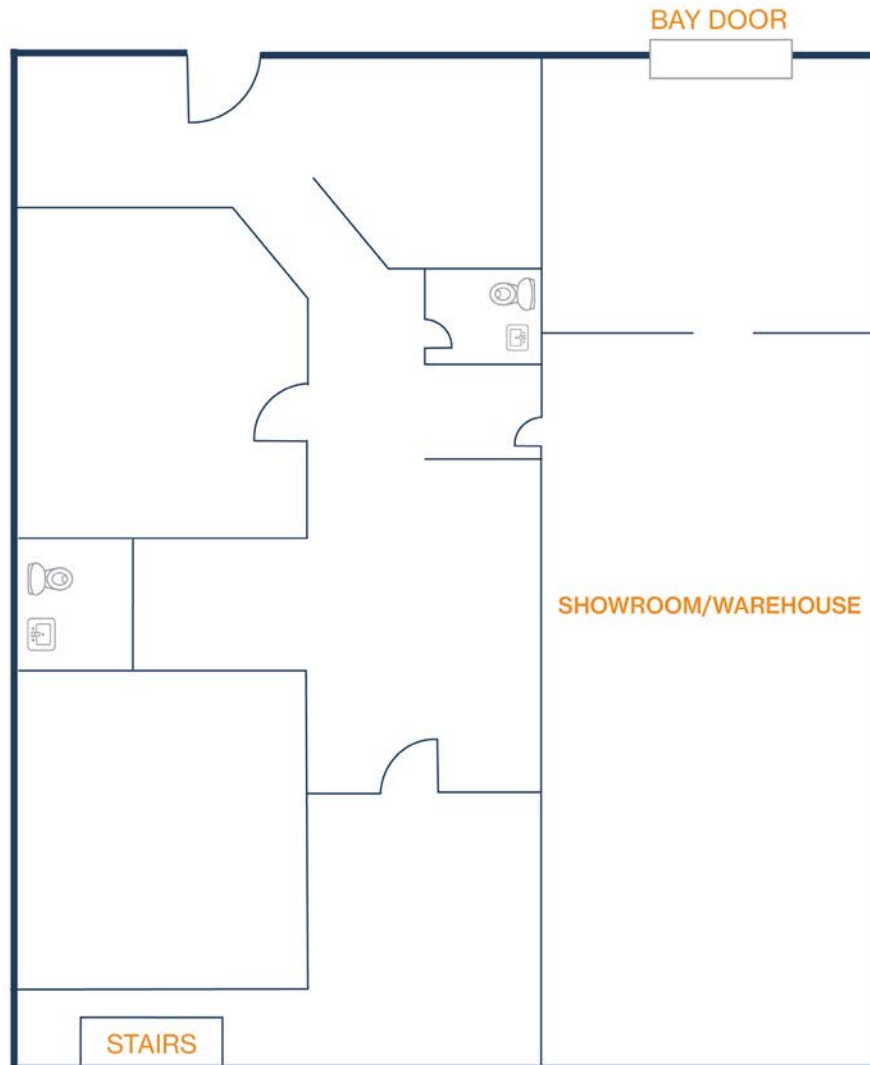
RYAN.YOUNG@FORT-COMPANIES.COM

This information is deemed reliable, however, Fort makes no guarantee, warranties, or representations as to the completeness or accuracy thereof.



## FLOOR PLAN — AVAILABLE IMMEDIATELY

- » 3,000 SF Total Available
  - » 1,200 SF Upstairs Office
  - » 1,800 SF Warehouse
- » (1) 12' x 14' Grade Level Doors



**RYAN YOUNG**



281.584.3320



RYAN.YOUNG@FORT-COMPANIES.COM