



FOR LEASE

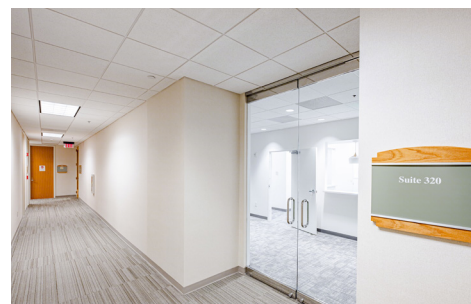
±2,000 - 4,850 SF

A WELL-Certified Building

DOCTOR'S CENTER FOUR

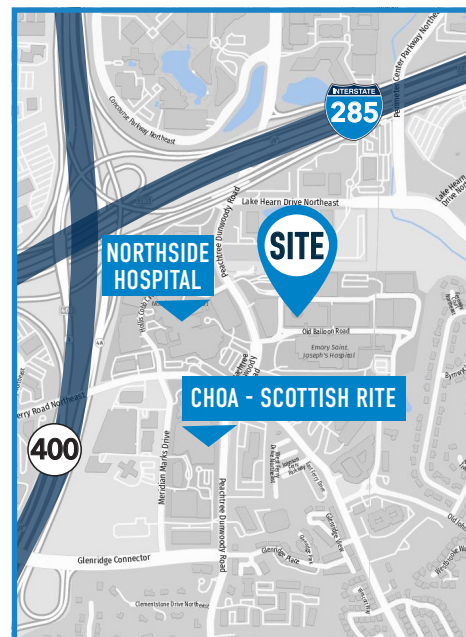
5673 Peachtree Dunwoody Rd

Medical
Atlanta, GA
30342



OVERVIEW:

- » Four suites available
 - » **Suite 300:** 2,585 - 4,849 SF
 - » **Suite 320:** 2,264 - 4,849 SF
 - » **Suite 420:** 2,002 SF
 - » **Suite 750:** 3,093 SF
- » Rate: \$44/SF Full Service
- » Located within a nine-story medical office building on Pill Hill
- » Central Perimeter submarket
- » Walking distance to Northside Hospital, St. Joseph's Hospital, and Scottish Rite Medical Center
- » Class A building with newly-renovated common areas
- » Direct access to MARTA
- » Convenient to all Pill Hill amenities
- » Physician's parking
- » Easy access to GA-400 and I-285




DOCTOR'S CENTER FOUR


5673 Peachtree Dunwoody Rd

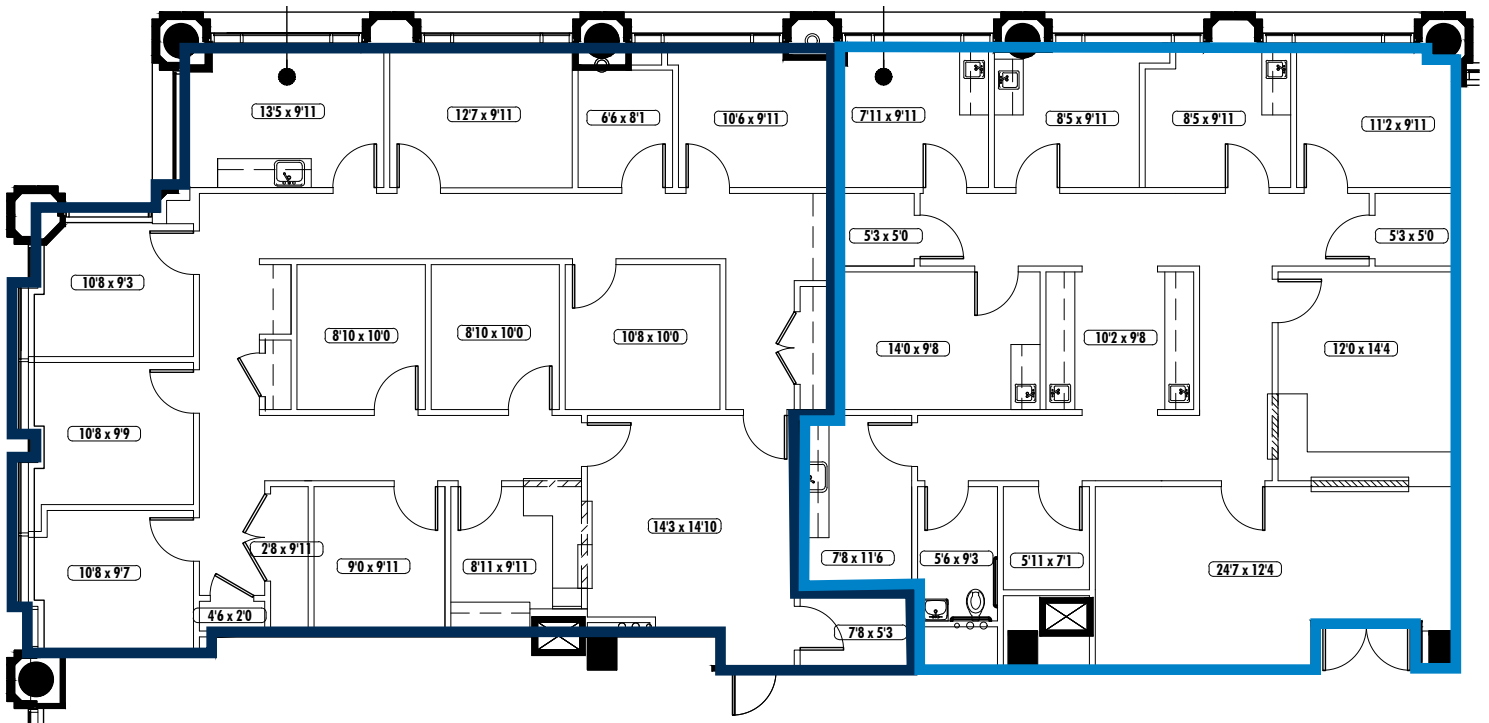
FLOOR PLANS

SUITE 300

Size: 2,585 SF 
Availability: Immediate

SUITE 320

Size: 2,264 SF 
Availability: Immediate



DOCTOR'S CENTER FOUR

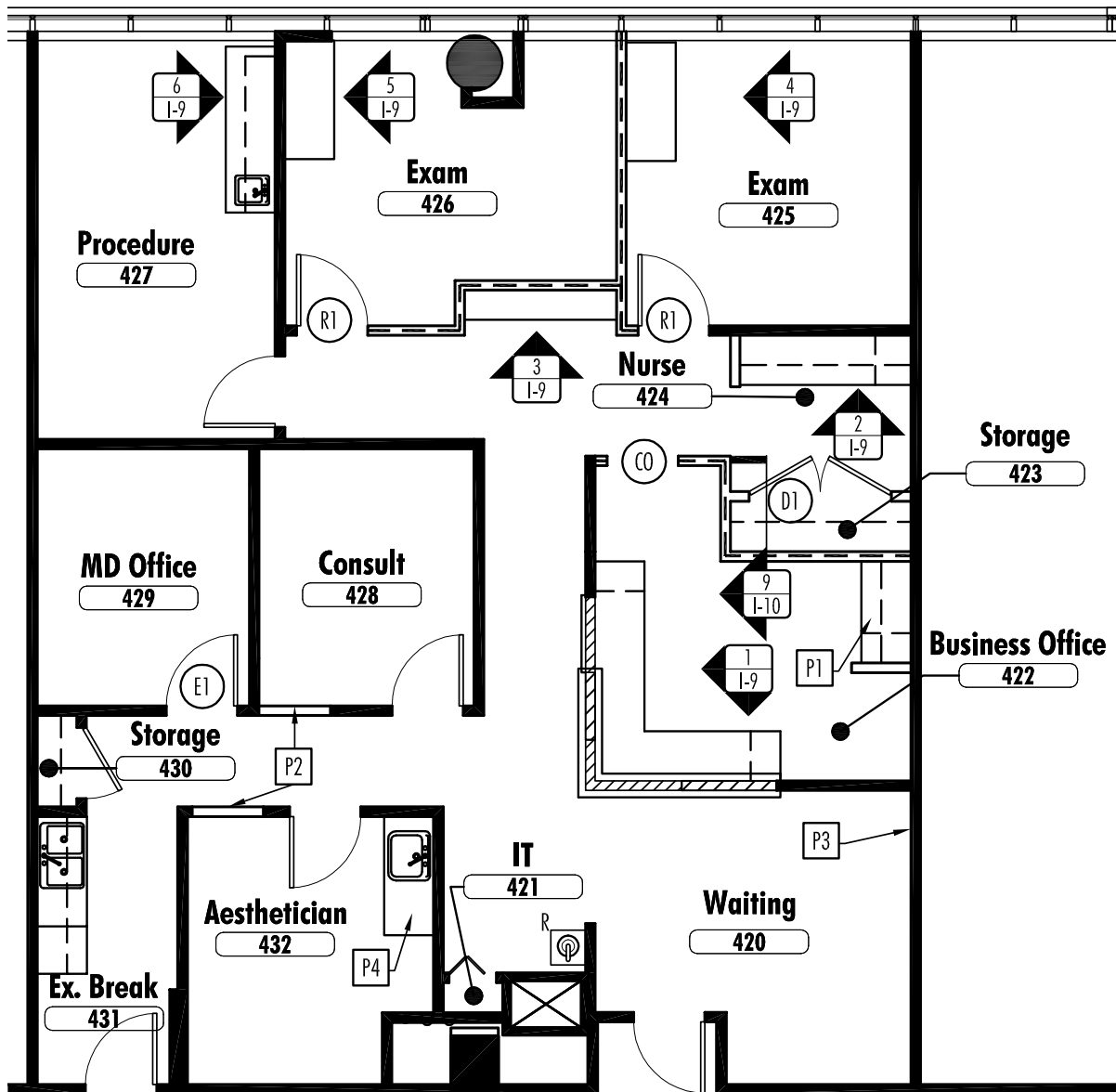
5673 Peachtree Dunwoody Rd

FLOOR PLANS

SUITE 420

Size: 2,002 SF

Availability: Immediate



DOCTOR'S CENTER FOUR

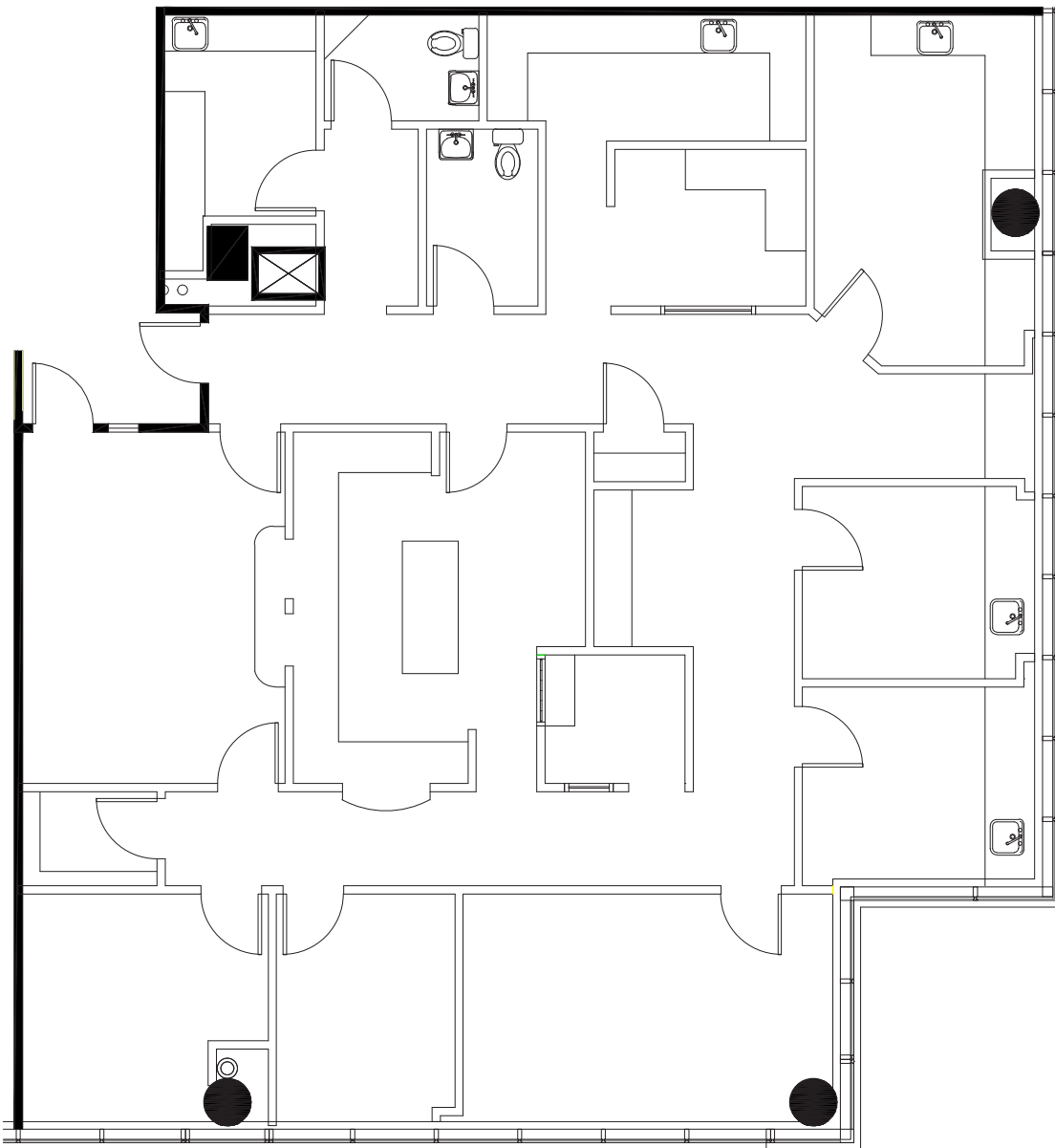
5673 Peachtree Dunwoody Rd

FLOOR PLANS

SUITE 750

Size: 3,093 SF

Availability: Immediate



DOCTOR'S CENTER FOUR

5673 Peachtree Dunwoody Rd

PHOTOS

