



GeoDwell
COMMERCIAL REAL ESTATE SERVICES

PROFESSIONAL
OFFICE SPACE
PROPERTY HIGHLIGHTS

- 1,473 SQFT
- 3 PRIVATE OFFICES
- CONF ROOM & RECEPTION
- COFFEE BAR/WORKROOM
- COVERED OUTDOOR PATIO
- MONUMENT SIGNAGE

PRICE
\$19.75 base
+ \$8.79 NNN
(or modified gross of
\$3500/mo)

KELLER WILLIAMS REALTY
2106 E. ST HWY 114 SOUTH LAKE, TEXAS 76092
VISIT GeoDwellCommercial.com



EXECUTIVE GARDEN OFFICE AVAILABLE NOW!



FOR LEASE

Click here for:
[Video Tour](#)

Contact:

Michelle Rawls
(817) 715-5222
michelle@geoDWELL.com



PROFESSIONAL OFFICE IN COLLEYVILLE

FOR LEASE

1117 GLADE ROAD, UNIT #140, COLLEYVILLE, TX 76034

OFFERING SUMMARY

Lease Rate:\$19.75

NNN's: \$8.79

Suite Size:1,473 SQFT

Reception Area & Conference Room:1/1

Offices: 3

Restrooms: 1

Workroom/Storage Room:1

Parking Features:Shared/Surface

Zoning: PUD-C Planned Unit Development Com

PROPERTY HIGHLIGHTS

- Main thoroughfare in Colleyville
- Affluent demographic
- Professional/Medical Office (Accounting, Advertising, Engineering, General Business, Insurance, Medical, Real Estate, Title, Travel)



Michelle Rawls

Director

817.715.5222

michelle@geoDWELL.com

Kevin Alexander

Associate

817.899.5493

kevin@geoDWELL.com

Newman Dalton

Associate

425.679.1411

dalton@geoDWELL.com



PROFESSIONAL OFFICE IN COLLEYVILLE

FOR LEASE

1117 GLADE ROAD, UNIT #140, COLLEYVILLE, TX 76034



Michelle Rawls

Director

817.715.5222

michelle@geoDWELL.com

Kevin Alexander

Associate

817.899.5493

kevin@geoDWELL.com

Newman Dalton

Associate

425.679.1411

dalton@geoDWELL.com



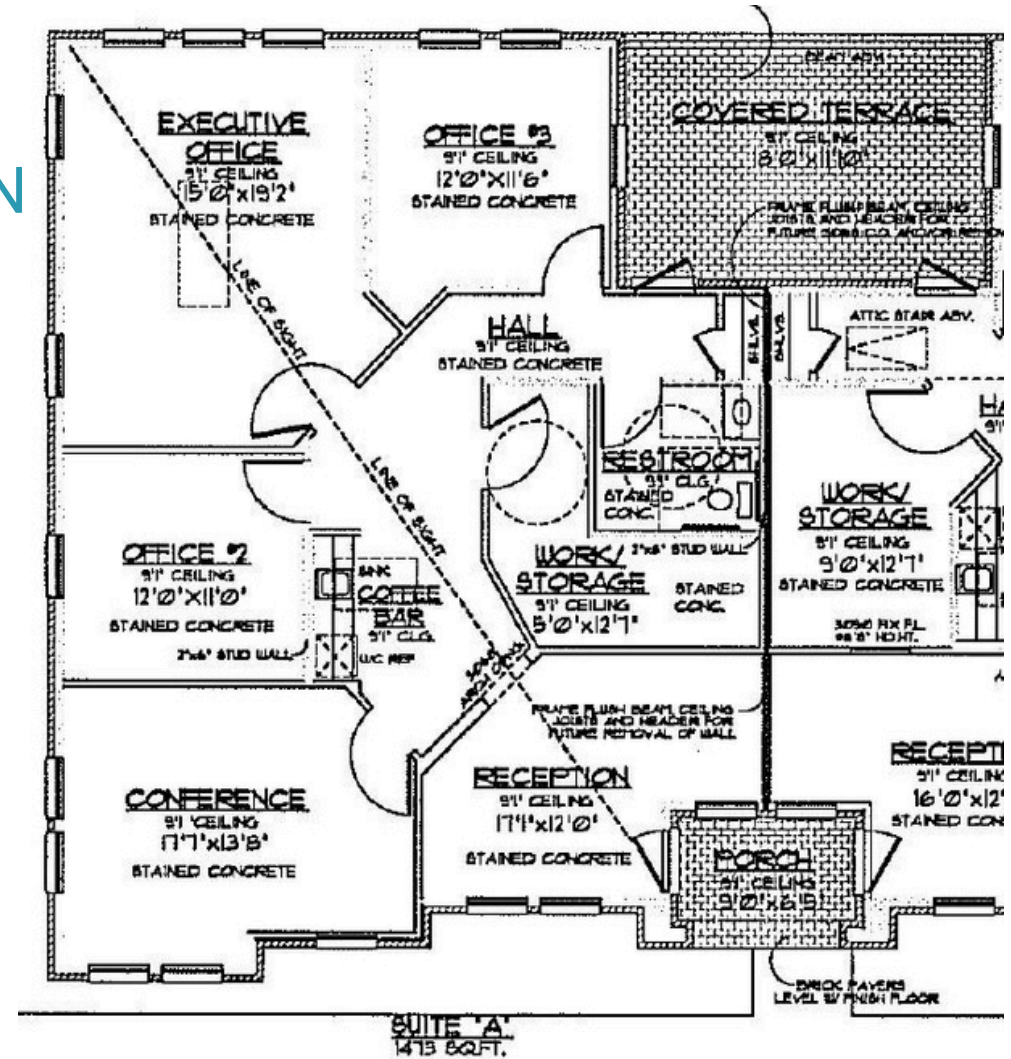
GeoDwell
COMMERCIAL REAL ESTATE SERVICES

PROFESSIONAL OFFICE IN COLLEYVILLE

FOR LEASE

1117 GLADE ROAD, UNIT #140, COLLEYVILLE, TX 76034

FLOOR PLAN



Michelle Rawls

Director

817.715.5222

michelle@geoDWELL.com

Kevin Alexander

Associate

817.899.5493

kevin@geoDWELL.com

Newman Dalton

Associate

425.679.1411

dalton@geoDWELL.com



PROFESSIONAL OFFICE IN COLLEYVILLE

FOR LEASE

1117 GLADE ROAD, UNIT #140, COLLEYVILLE, TX 76034

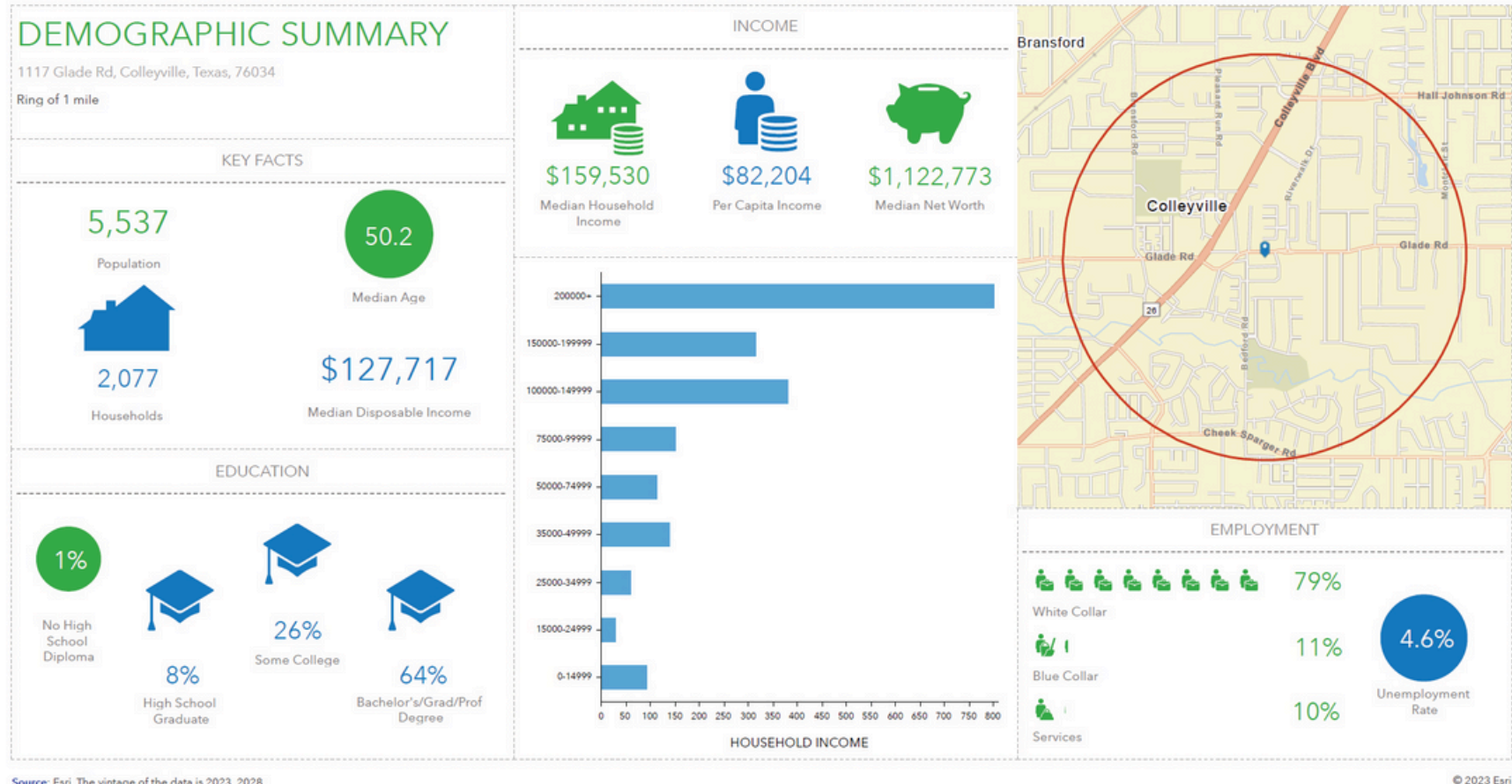
DEMOGRAPHIC SUMMARY

Demographic Summary_Colleyville

1117 Glade Rd, Colleyville, Texas, 76034 (1 mile)
1117 Glade Rd, Colleyville, Texas, 76034
Ring of 1 mile



Prepared by GeoDwell
Latitude: 32.88108
Longitude: -97.15031



Michelle Rawls

Director

817.715.5222

michelle@geoDWELL.com

Kevin Alexander

Associate

817.899.5493

kevin@geoDWELL.com

Newman Dalton

Associate

425.679.1411

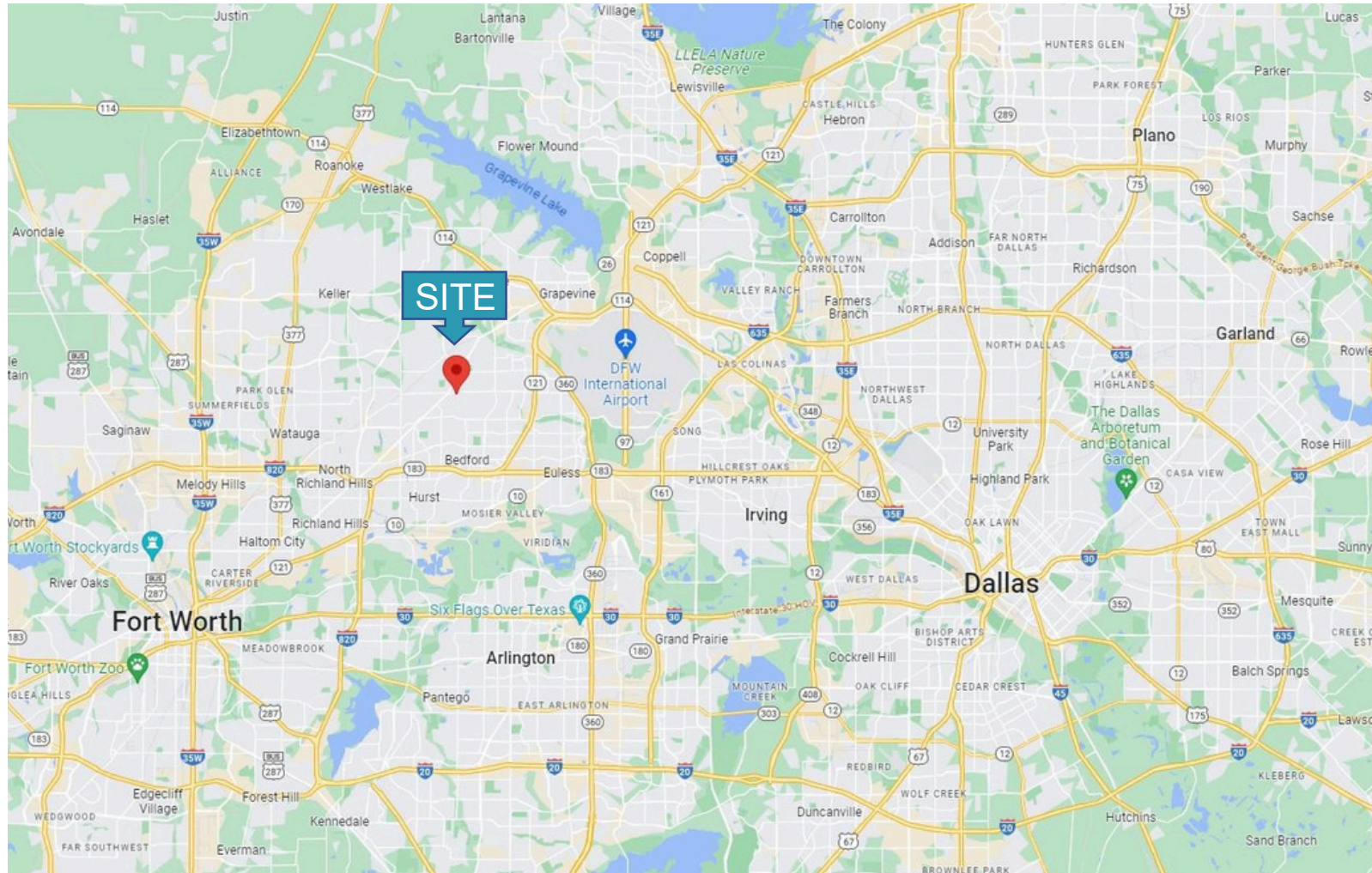
dalton@geoDWELL.com

PROFESSIONAL OFFICE IN COLLEYVILLE

FOR LEASE

1117 GLADE ROAD, UNIT #140, COLLEYVILLE, TX 76034

LOCATION



Michelle Rawls

Director

817.715.5222

michelle@geoDWELL.com

Kevin Alexander

Associate

817.899.5493

kevin@geoDWELL.com

Newman Dalton

Associate

425.679.1411

dalton@geoDWELL.com

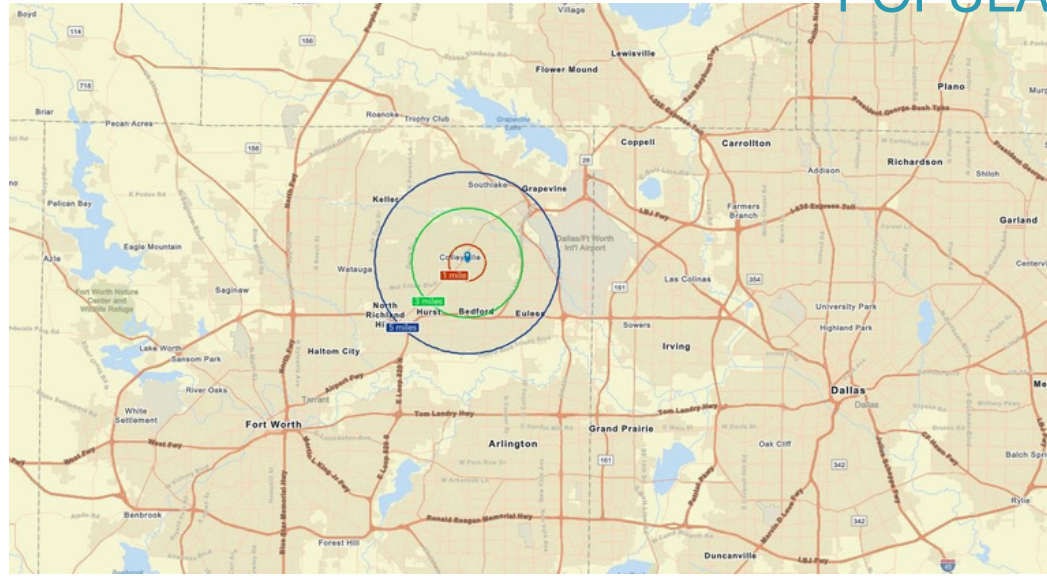


PROFESSIONAL OFFICE IN COLLEYVILLE

FOR LEASE

1117 GLADE ROAD, UNIT #110, COLLEYVILLE, TX 76034

POPULATION & INCOME



POPULATION

Total Population
Median Age

1 MILES

5,823
50.2

3 MILES

80,529
47.6

5 MILES

260,305
41.1

HOUSEHOLDS & INCOME

Total households
of persons per HH
Average HH income

1 MILES

2,073
2.81
\$159,530

3 MILES

30,757
2.62
\$115,423

5 MILES

97,735
2.66
\$89,288

Michelle Rawls

Director

817.715.5222

michelle@geoDWELL.com

Kevin Alexander

Associate

817.899.5493

kevin@geoDWELL.com

Newman Dalton

Associate

425.679.1411

dalton@geoDWELL.com





GeoDwellSM
REAL ESTATE SERVICES

CONTACT: (682) 235-4GEO
michelle@geoDWELL.com
www.geoDWELL.com