

FOR LEASE

480 COWPER ST, PALO ALTO

±937 SQ. FT. OFFICE



**PREMIER
PROPERTIES**
COMMERCIAL
REAL ESTATE

BRAD EHIKAN

Partner
dre license #01736391
📞 | 650.618.3001
✉ | brad.ehikian@prprop.com

JON GOLDMAN

Partner
dre license #01295503
📞 | 650.618.3003
✉ | jon.goldman@prprop.com

JESSE EBNER

Vice President
dre license #02055989
📞 | 650.618.3017
✉ | jesse.ebner@prprop.com

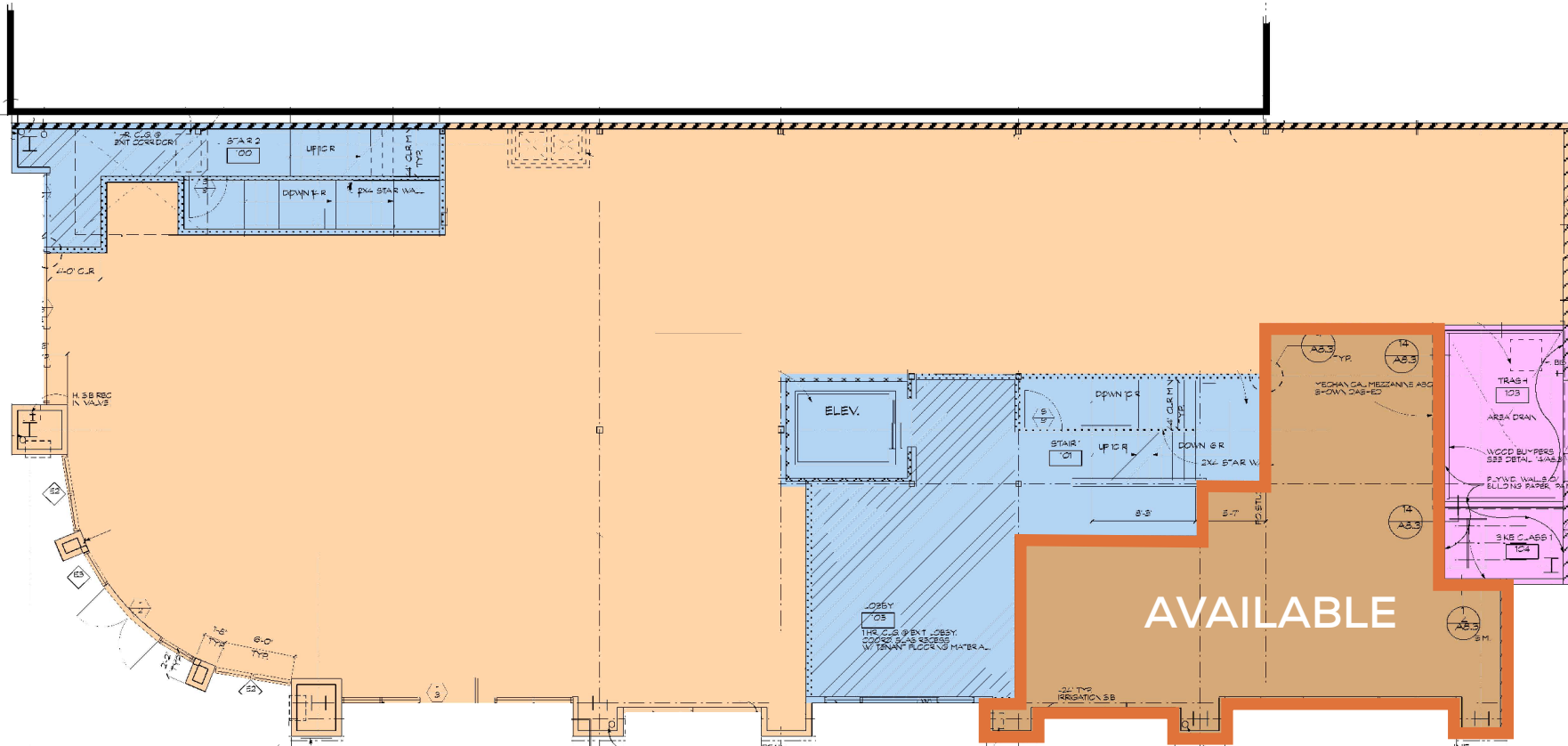
PROPERTY HIGHLIGHTS

- ▀ ±937 Sq. Ft. Office in Class A Building
- ▀ Excellent Location in Downtown Palo Alto
- ▀ One Exclusive Parking Space Adjacent to the Building
- ▀ Ground Floor Suite with Great Natural Light
- ▀ Ideal for Professional Services Tenant
- ▀ High Ceilings Throughout
- ▀ Lobby Access and Private Entrance on Cowper Street
- ▀ Dedicated Restroom with Shower
- ▀ Surrounded by Downtown Restaurants & Amenities
- ▀ Walking Distance to CalTrain Station
- ▀ Available Immediately



480 COWPER ST, PALO ALTO

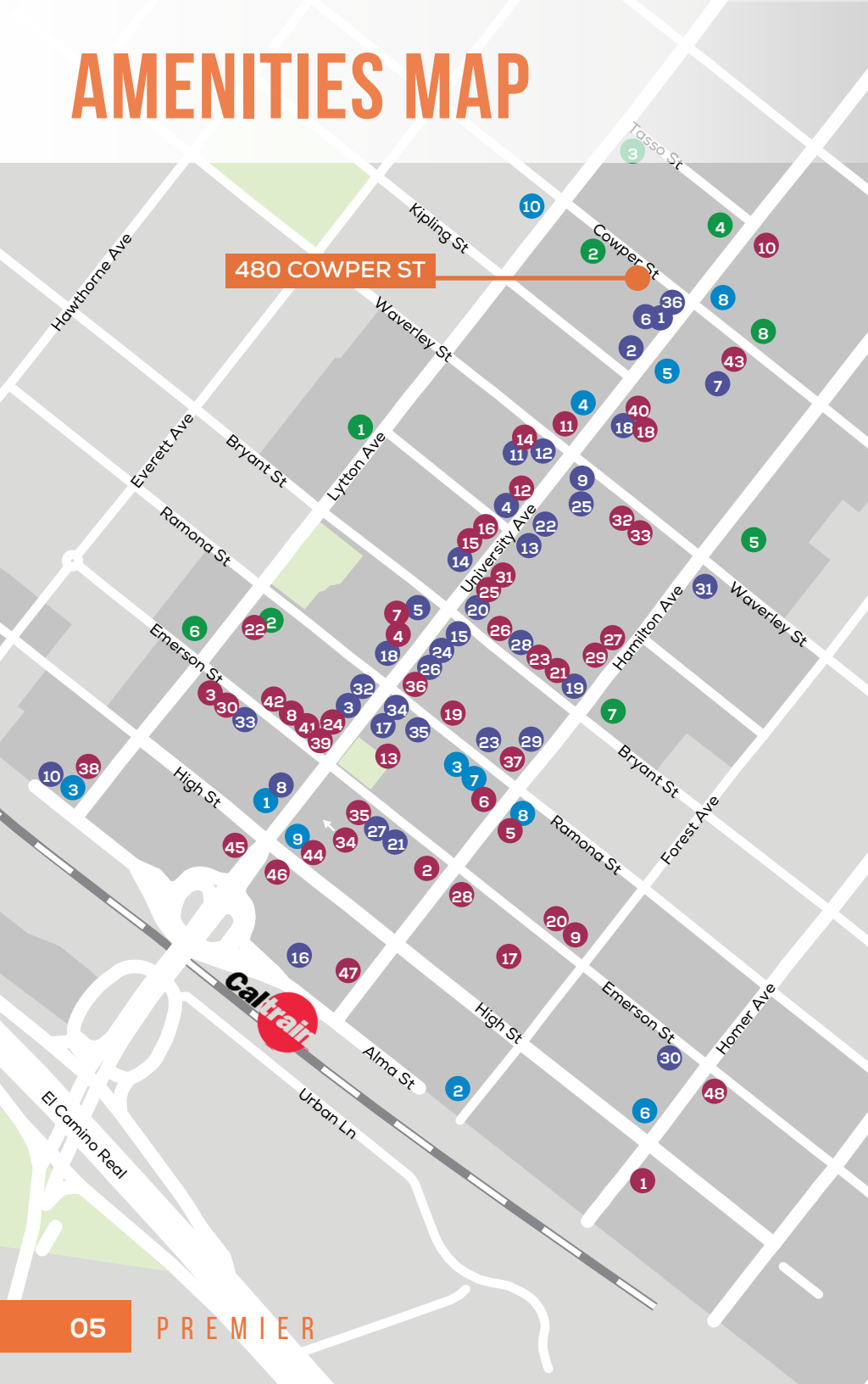
FLOOR PLAN



COWPER STREET

Not Precise / Not to Scale

AMENITIES MAP



SHOPPING / SERVICES

- 1 AT&T Store
- 2 Footwear Etc
- 3 Verizon
- 4 Design Within Reach
- 5 Miniso
- 6 Cielo
- 7 el PRADO Hotel
- 8 Palo Alto Bicycles
- 9 Chico's
- 10 E-bike Annex
- 11 Visual Comfort & Co
- 12 The RealReal
- 13 Apple Store
- 14 Brandy Melville
- 15 Keen Garage
- 16 Patagonia
- 17 Fjallraven
- 18 Arnoldi Jewelers
- 19 UPS Store
- 20 Artsy Rugs
- 21 Bells Books
- 22 CVS
- 23 Warby Parker
- 24 Lenscrafters
- 25 Avocado Green Mattress
- 26 The Shade Store
- 27 Mac's Smoke Shop
- 28 Timothy Adams
- 29 Scandia Home
- 30 Whole Foods
- 31 US Postal Service
- 32 Stanford Theatre
- 33 Aquarius Theatre
- 34 Juut Salon
- 35 Mansoor Fine Jewelers
- 36 Solidcore

RESTAURANTS

- 1 St Michael's Alley
- 2 Palo Alto Creamery
- 3 Evvia
- 4 Orens Hummus
- 5 Reposado
- 6 Osteria Toscana
- 7 Local Union
- 8 Rangoon Ruby
- 9 Pizzeria Delfina
- 10 Tamarine
- 11 Yayoi Palo Alto
- 12 Crepevine
- 13 Pizza My Heart
- 14 Marugame Udon
- 15 Bevri
- 16 Khazana by Chef Sanjeev Kapoor
- 17 Tacolicious
- 18 SOMSOMI
- 19 Nola
- 20 Buca di Beppo
- 21 Zola
- 22 Macarena
- 23 Ramen Nagi
- 24 Steam
- 25 Curry Pizza House
- 26 Son & Garden
- 27 New York Pizza
- 28 Nobu
- 29 Curry Up Now
- 30 The Patio
- 31 La Corneta Taqueria
- 32 Ethel's Fancy
- 33 Tai Pan
- 34 Sprout Café
- 35 Bare Bowls
- 36 Salt and Straw
- 37 sweetgreen
- 38 Darbar Indian Cuisine
- 39 Scoop
- 40 Sushirrito
- 41 Tane Vegan Izakaya
- 42 Gelato Classico
- 43 Il Fornaio
- 44 Sweet Maple
- 45 New York New York Sandwiches
- 46 Arya Steakhouse
- 47 San Agus Cocina Urbana
- 48 Taverna

BANKS

- 1 Heritage Bank of Commerce
- 2 Comerica Bank
- 3 Bank of America
- 4 Stanford Credit Union
- 5 Wells Fargo
- 6 City National Bank
- 7 Chase Bank
- 8 Bank of The West

COFFEE

- 1 Starbucks
- 2 Philz Coffee
- 3 Coupa Cafe
- 4 Café Venetia
- 5 Blue Bottle Café
- 6 Peets
- 7 Bistro Maxine
- 8 Joe & the Juice
- 9 Verve
- 10 Mademoiselle Colette

TRANSPORTATION MAP

480 COWPER ST PALO ALTO

✈️ PLANES	🚆 TRAINS
SJC - 17.5 miles	San Francisco - 51 min
SFO - 18.1 miles	Milbrae - 31 min
OAK - 16.2 miles	San Jose - 29 min
🚗 AUTOMOBILES	
San Francisco - 32.56 miles	
Downtown San Jose - 19.6 miles	
Downtown Oakland - 33.3 miles	

INTERSTATE 280 (122,000 VPD)

Downtown San Francisco →

San Francisco Int. Airport

101

Downtown Redwood City

Bayshore Fwy (227,900 VPD)

Stanford Medical Center

Stanford Shopping Center

Caltrain
Downtown Menlo Park

Sand Hill Rd (31,468 VPD)

El Camino Real (37,300 VPD)

480 COWPER ST, PALO ALTO

Stanford University

Caltrain
Downtown Palo Alto

Downtown Palo Alto

Palm Dr

Caltrain Rail Line

University Ave (18,700 VPD)

FOR LEASE

480 COWPER ST, PALO ALTO

±937 SQ. FT. OFFICE



**PREMIER
PROPERTIES**
COMMERCIAL
REAL ESTATE

BRAD EHIKIAN

Partner
dre license #01736391
📞 | 650.618.3001
✉ | brad.ehikian@prprop.com

JON GOLDMAN

Partner
dre license #01295503
📞 | 650.618.3003
✉ | jon.goldman@prprop.com

JESSE EBNER

Vice President
dre license #02055989
📞 | 650.618.3017
✉ | jesse.ebner@prprop.com