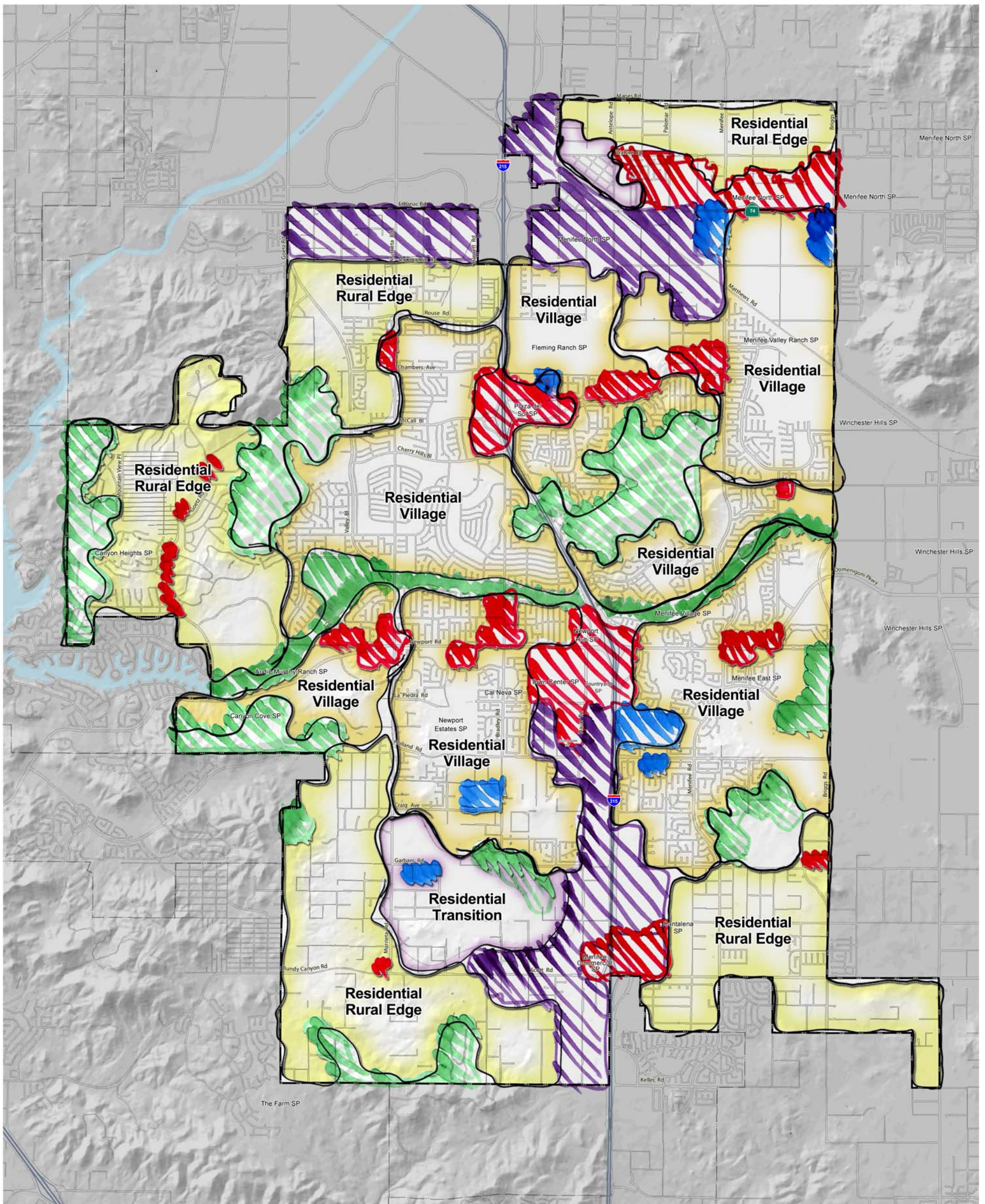






# EXHIBIT LU-1 COMMUNITY STRUCTURE



Source: The Planning Center | DC&E, 2013

-  Commercial cluster: Predominantly regional or neighborhood-serving retail commercial uses
-  Jobs center: A mix of predominantly nonresidential land uses (such as office, business park, industrial) and limited residential uses
-  Public facility: Includes schools, universities, and utilities
-  Natural landform: Hillsides, creeks, greenways, and other significant topography