

# RACKED FREEZER WAREHOUSE FOR SUBLEASE

18,682 Square Feet

Convertible Freezer/Cooler Available ~ Commerce



**FOOD PROPERTIES**  
GROUP



## 6100 SHEILA STREET, COMMERCE, CALIFORNIA

- Available Area: 18,682 Square Feet (SF)
- All Convertible Frozen/Refrigerated Storage
- +/- 1,100 Racked Positions
- 22' Ceiling
- 7 Exterior Covered Dock Positions
- Near I-5

**Scott Delphey, Founder**  
**Food Properties Group**

Lic. #01488628 | Corp. #02024720

M: 626.590.0490

E: [scott.delphey@foodpropertiesgroup.com](mailto:scott.delphey@foodpropertiesgroup.com)

**Matthew Delphey, CPA**  
**Food Properties Group**

Lic. #02036100 | Corp. #02024720

M: 626.716.0675

E: [matthew.delphey@foodpropertiesgroup.com](mailto:matthew.delphey@foodpropertiesgroup.com)

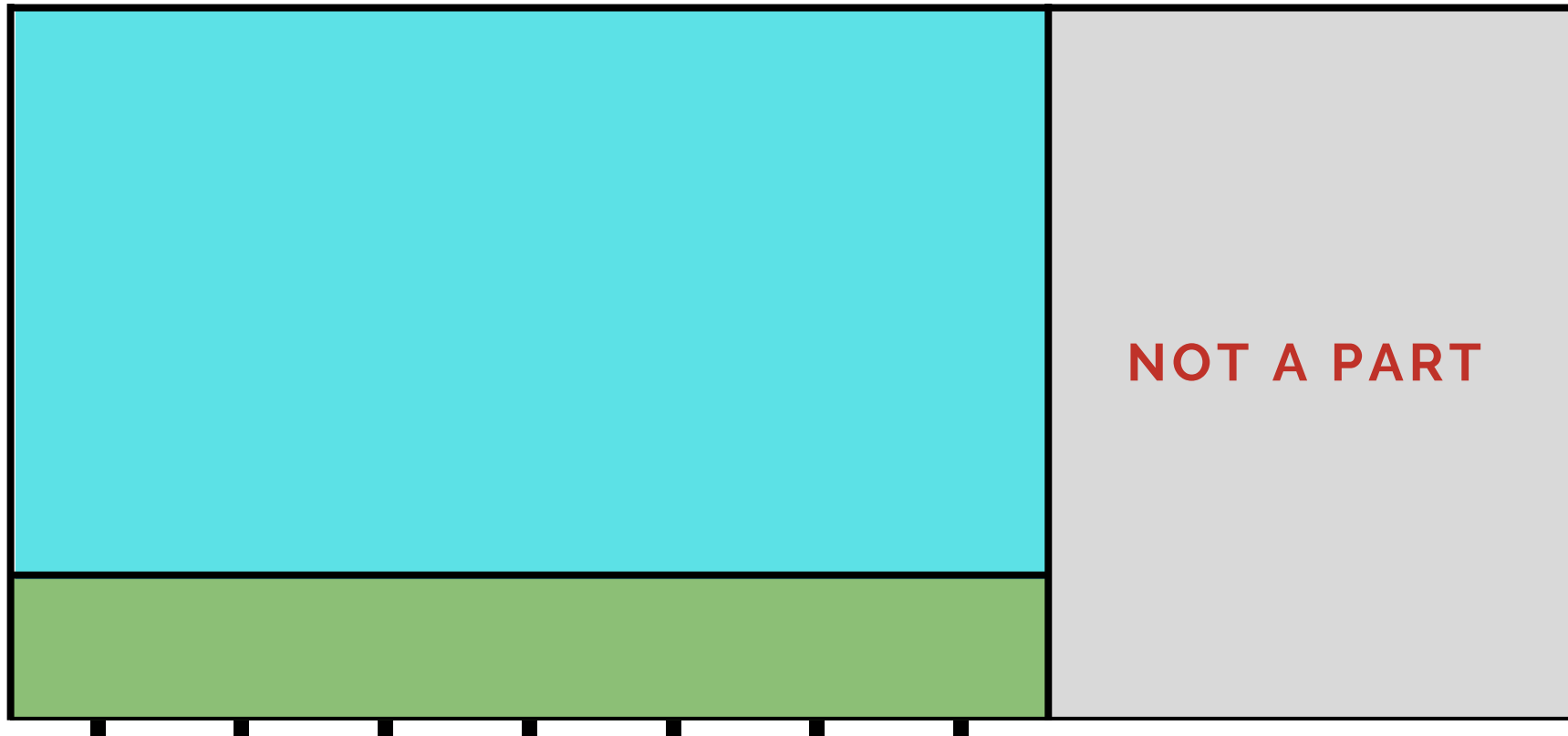
# RACKED FREEZER WAREHOUSE FOR SUBLEASE

18,682 Square Feet



Convertible Freezer/Cooler Available ~ Commerce



**FOOD PROPERTIES**  
GROUP



7 Dock High Positions

	Convertible Freezer/ Cooler Storage
	Exterior Covered Loading

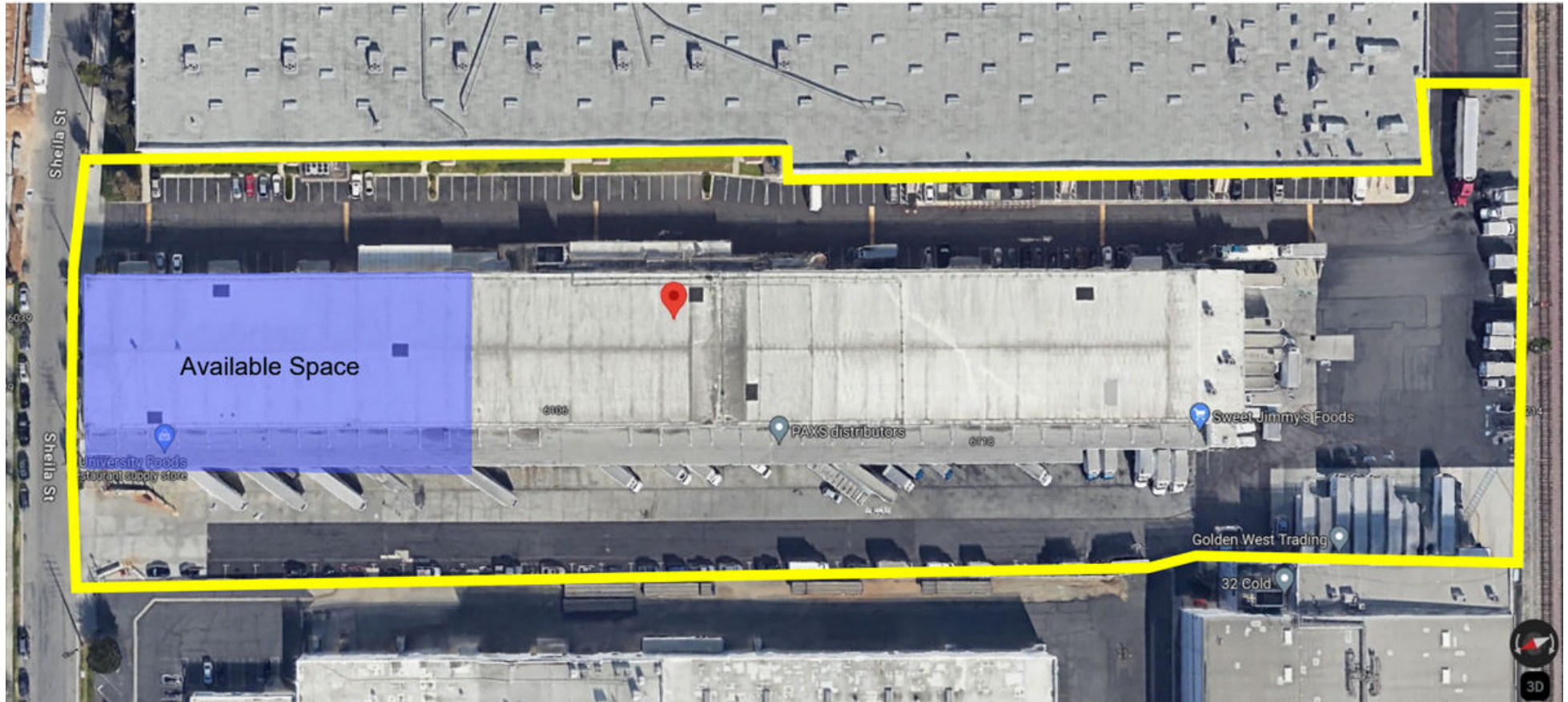
# RACKED FREEZER WAREHOUSE FOR SUBLEASE

18,682 Square Feet

Convertible Freezer/Cooler Available ~ Commerce



**FOOD PROPERTIES**  
GROUP



# RACKED FREEZER WAREHOUSE FOR SUBLEASE

18,682 Square Feet

Convertible Freezer/Cooler Available ~ Commerce



**FOOD PROPERTIES**  
GROUP



## OTHER

- Landlord Maintains All Building Systems, Including Refrigeration
- Functional Space; No Rent Paid on the Covered Dock Area
- Immediate 5 Freeway Access via Washington Blvd
- Sublease through April 2025
- Direct Lease Possible



**Scott Delphey, Founder**  
**Food Properties Group**

Lic. #01488628 | Corp. #02024720

M: 626.590.0490

E: [scott.delphey@foodpropertiesgroup.com](mailto:scott.delphey@foodpropertiesgroup.com)

**Matthew Delphey, CPA**  
**Food Properties Group**

Lic. #02036100 | Corp. #02024720

M: 626.716.0675

E: [matthew.delphey@foodpropertiesgroup.com](mailto:matthew.delphey@foodpropertiesgroup.com)

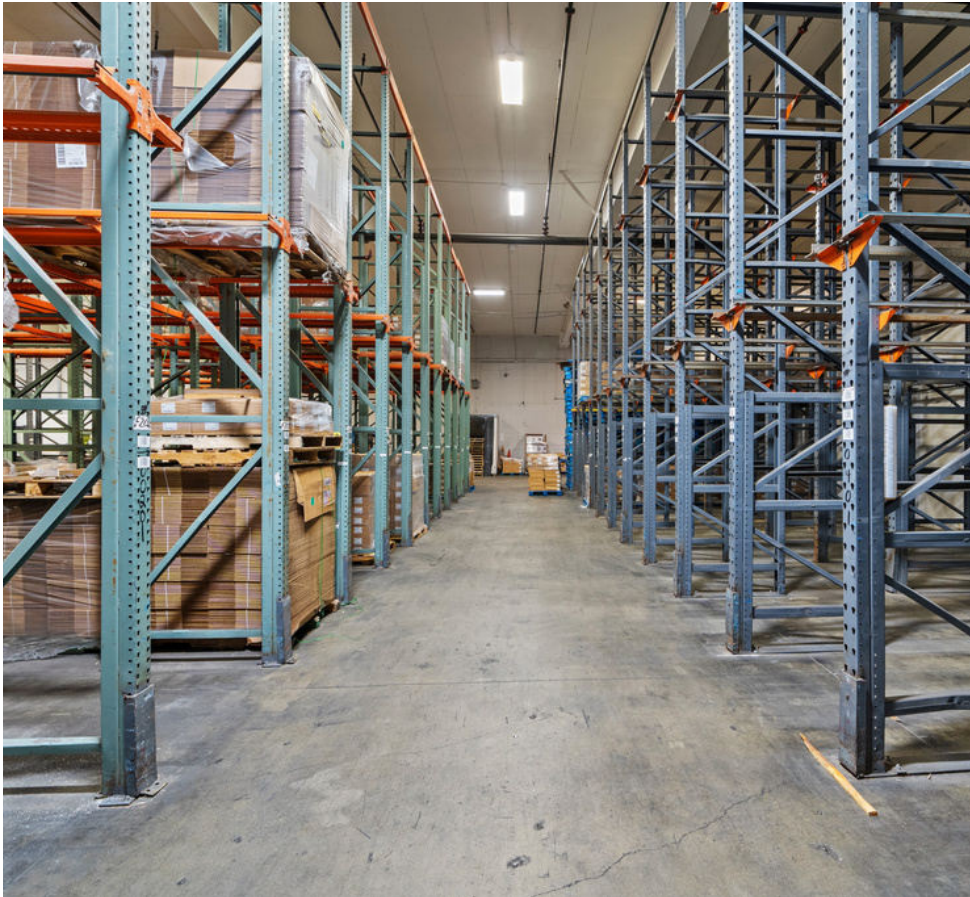
# RACKED FREEZER WAREHOUSE FOR SUBLEASE

18,682 Square Feet

Convertible Freezer/Cooler Available ~ Commerce



**FOOD PROPERTIES**  
GROUP



**Scott Delphey, Founder**  
**Food Properties Group**

Lic. #01488628 | Corp. #02024720

M: 626.590.0490

E: [scott.delphey@foodpropertiesgroup.com](mailto:scott.delphey@foodpropertiesgroup.com)

**Matthew Delphey, CPA**  
**Food Properties Group**

Lic. #02036100 | Corp. #02024720

M: 626.716.0675

E: [matthew.delphey@foodpropertiesgroup.com](mailto:matthew.delphey@foodpropertiesgroup.com)

# RACKED FREEZER WAREHOUSE FOR SUBLEASE

18,682 Square Feet

Convertible Freezer/Cooler Available ~ Commerce



**FOOD PROPERTIES**  
GROUP



**Scott Delphey, Founder**  
**Food Properties Group**

Lic. #01488628 | Corp. #02024720

M: 626.590.0490

E: [scott.delphey@foodpropertiesgroup.com](mailto:scott.delphey@foodpropertiesgroup.com)

**Matthew Delphey, CPA**  
**Food Properties Group**

Lic. #02036100 | Corp. #02024720

M: 626.716.0675

E: [matthew.delphey@foodpropertiesgroup.com](mailto:matthew.delphey@foodpropertiesgroup.com)

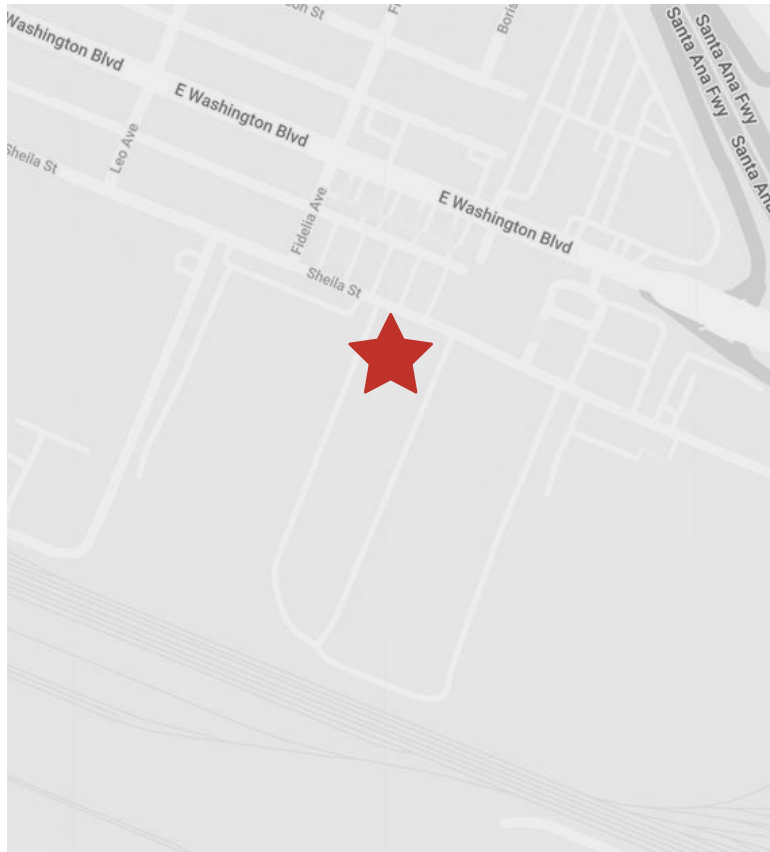
# RACKED FREEZER WAREHOUSE FOR SUBLEASE

18,682 Square Feet

Convertible Freezer/Cooler Available ~ Commerce



**FOOD PROPERTIES**  
GROUP



**Scott Delphey, Founder**  
**Food Properties Group**

Lic. #01488628 | Corp. #02024720

M: 626.590.0490

E: [scott.delphey@foodpropertiesgroup.com](mailto:scott.delphey@foodpropertiesgroup.com)

**Matthew Delphey, CPA**  
**Food Properties Group**

Lic. #02036100 | Corp. #02024720

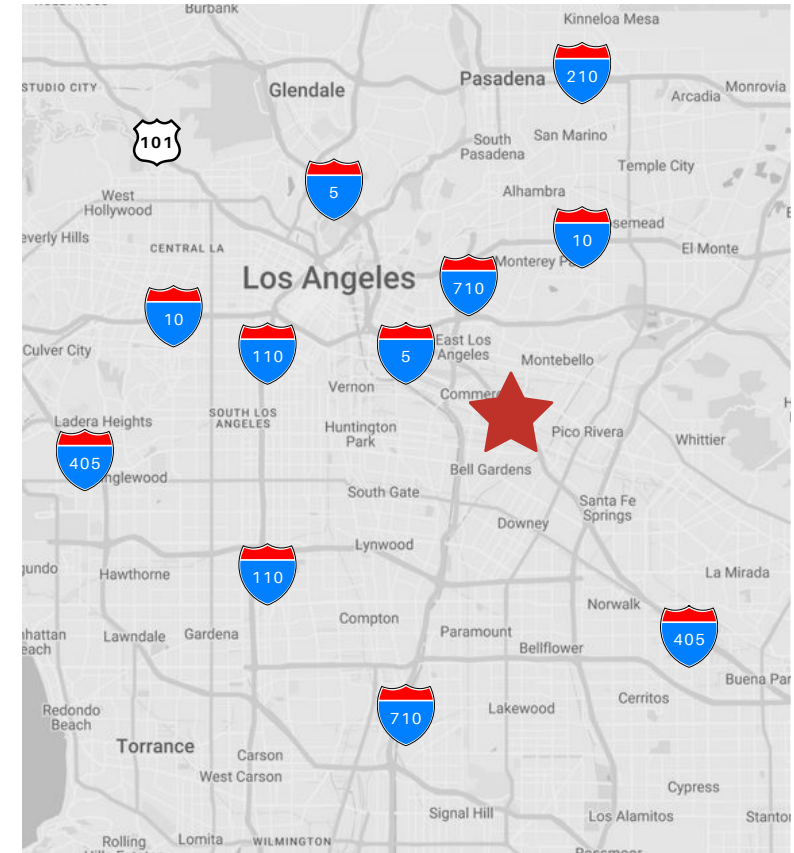
M: 626.716.0675

E: [matthew.delphey@foodpropertiesgroup.com](mailto:matthew.delphey@foodpropertiesgroup.com)

# RACKED FREEZER WAREHOUSE FOR SUBLEASE

18,682 Square Feet

Convertible Freezer/Cooler Available ~ Commerce



**Scott Delphey, Founder**  
**Food Properties Group**

Lic. #01488628 | Corp. #02024720

M: 626.590.0490

E: [scott.delphey@foodpropertiesgroup.com](mailto:scott.delphey@foodpropertiesgroup.com)

DISCLAIMER: © 2024 Food Properties Group Inc. This information has been obtained from sources believed reliable. We have not verified it and make no guarantee, warranty or representation about it. Any projections, opinions, assumptions or estimates used are for example only and do not represent the current or future performance of the property. You and your advisors should conduct a careful, independent investigation of the property to determine to your satisfaction the suitability of the property for your needs.