

3,346 SF



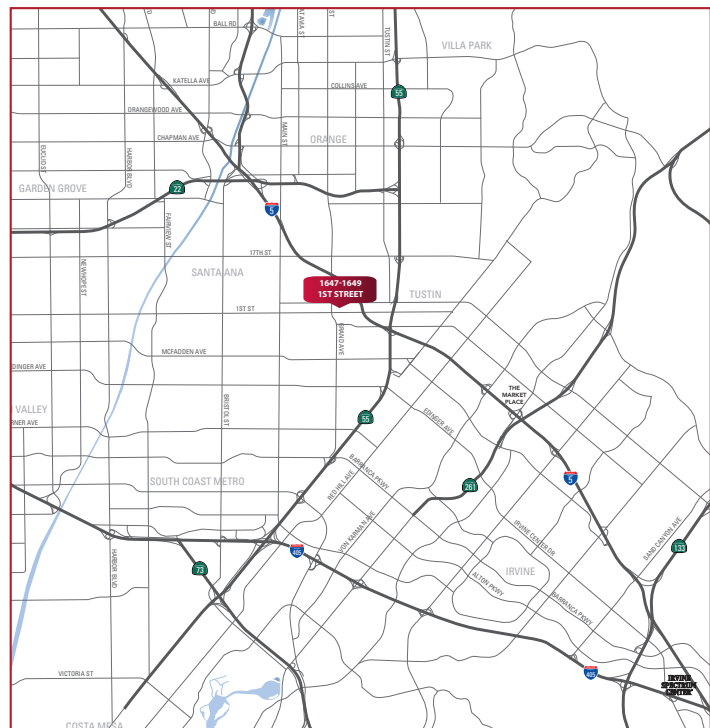
1647 E. FIRST STREET

SANTA ANA, CA 92701

FOR SALE

PROPERTY HIGHLIGHTS:

- Major Street Frontage on 1st Street.
(50,000 + Vehicles per day)
- Freestanding Commercial Building Two Units A/B
- ±5,662 SF Parcel
- C2 Zoning
- Immediate Access to 5, 55 and 22 Freeways



CONTACT



NICK KRAKOWER, SVP/PRINCIPAL
 (949) 724-4720
 nkrakower@lee-associates.com
 DRE# 02100512



JIM DEREGT, SVP/PRINCIPAL
 (949) 724-4734
 rdumke@lee-associates.com
 DRE# 01051405



RJ DUMKE, ASSOCIATE
 (949) 724-4736
 rdumke@lee-associates.com
 DRE# 02226306



DISCLAIMER: The information contained herein has been obtained from the property owner or other third party and is provided to you without verification as to accuracy. We (Lee & Associates, its brokers, employees, agents, principals, officers, directors and affiliates) make no warranty or representation regarding the information, property, or transaction. You and your attorneys, advisors and consultants should conduct your own investigation of the property and transaction.

E 4TH STREET

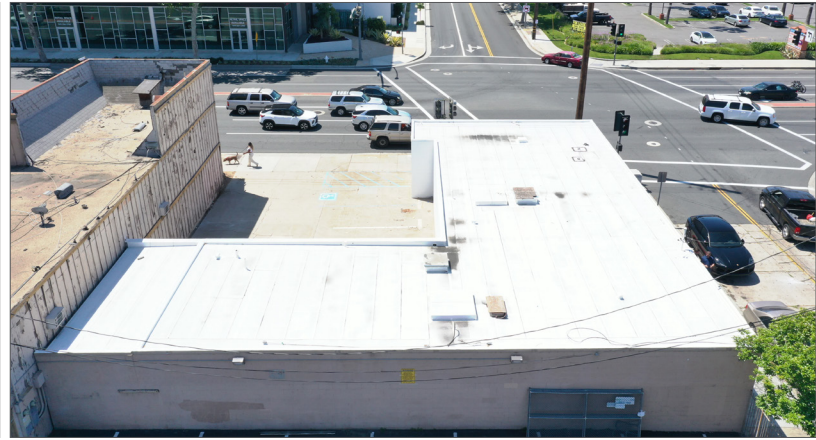
3,346 SF

1647-1649
E. 1ST ST.

E 1ST STREET

1647

E. FIRST STREET (UNIT A & B) • SANTA ANA, CA



CONTACT



NICK KRAKOWER, SVP/PRINCIPAL
(949) 724-4720
nkrakower@lee-associates.com
DRE# 02100512



JIM DEREGT, SVP/PRINCIPAL
(949) 724-4734
rdumke@lee-associates.com
DRE# 01051405



RJ DUMKE, ASSOCIATE
(949) 724-4736
rdumke@lee-associates.com
DRE# 02226306

LEE & ASSOCIATES
COMMERCIAL REAL ESTATE SERVICES
NEWPORT BEACH

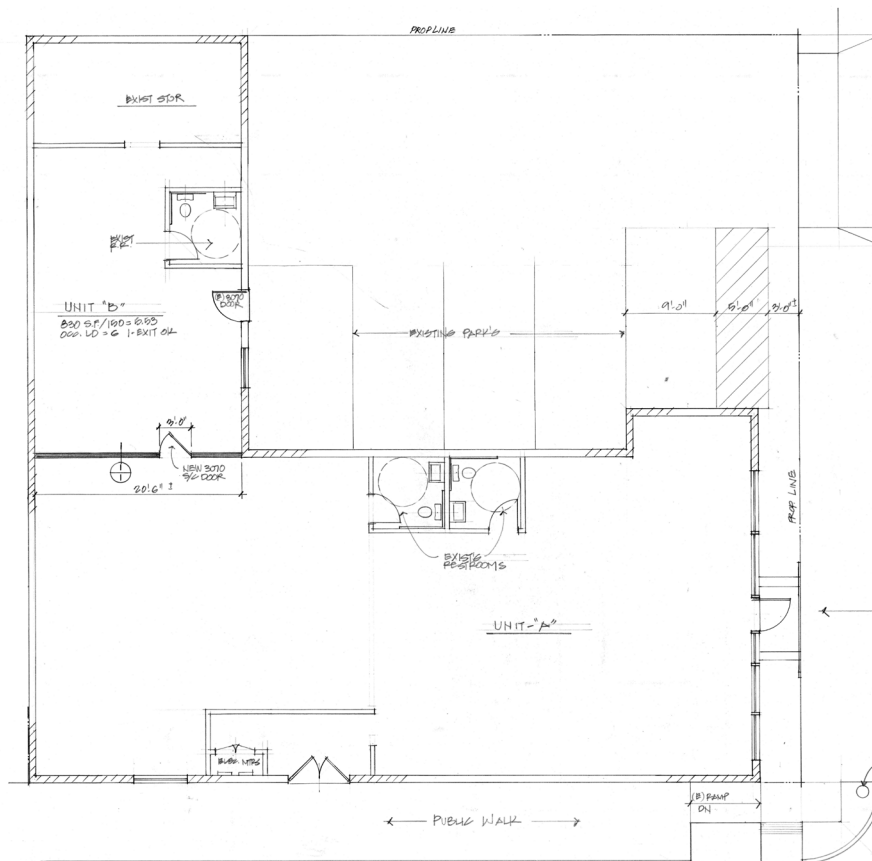
DISCLAIMER: The information contained herein has been obtained from the property owner or other third party and is provided to you without verification as to accuracy. We (Lee & Associates, its brokers, employees, agents, principals, officers, directors and affiliates) make no warranty or representation regarding the information, property, or transaction. You and your attorneys, advisors and consultants should conduct your own investigation of the property and transaction.

3,346 SF



1647

E. FIRST STREET (UNIT A & B) • SANTA ANA, CA



CONTACT



NICK KRAKOWER, SVP/PRINCIPAL
(949) 724-4720
nkrakower@lee-associates.com
DRE# 02100512



JIM DEREGT, SVP/PRINCIPAL
(949) 724-4734
rdumke@lee-associates.com
DRE# 01051405



RJ DUMKE, ASSOCIATE
(949) 724-4736
rdumke@lee-associates.com
DRE# 02226306



DISCLAIMER: The information contained herein has been obtained from the property owner or other third party and is provided to you without verification as to accuracy. We (Lee & Associates, its brokers, employees, agents, principals, officers, directors and affiliates) make no warranty or representation regarding the information, property, or transaction. You and your attorneys, advisors and consultants should conduct your own investigation of the property and transaction.