

MID PINELLAS OFFICE FLEX SPACE

100% CLIMATE CONTROLLED



FOR LEASE

8,700-SF TOTAL

5,740-SF OFFICE

2,960-SF WAREHOUSE

8565-B SOMERSET DRIVE

LARGO, FL 33773



NED WILLIS
NWILLIS@VECTORREALTY.COM
(727) 481-3356



ASHLEY WILLIS
AWILLIS@VECTORREALTY.COM
(727) 776-0290



SUMMARY

DETAILS

Mid Pinellas 100% climate-controlled office flex space located between Bryan Dairy Rd. and Ulmerton Rd. just East of Starkey Rd. The space is in excellent condition. The office area features 6 private offices, a conference room, reception/waiting, a break area, and 3 ADA-compliant restrooms. The warehouse clear height is currently 12 feet to the drop ceiling. This can be removed to provide up to 20+ feet clear height.

HIGHLIGHTS

- 100% Climate Controlled
- Large, Open Work Area
- 6 Private Offices
- 5,740 SF Office
- 2,960 SF Warehouse
- 1 Truck Well
- 1 Grade Level Door 12'x12'
- 21 Parking Spaces



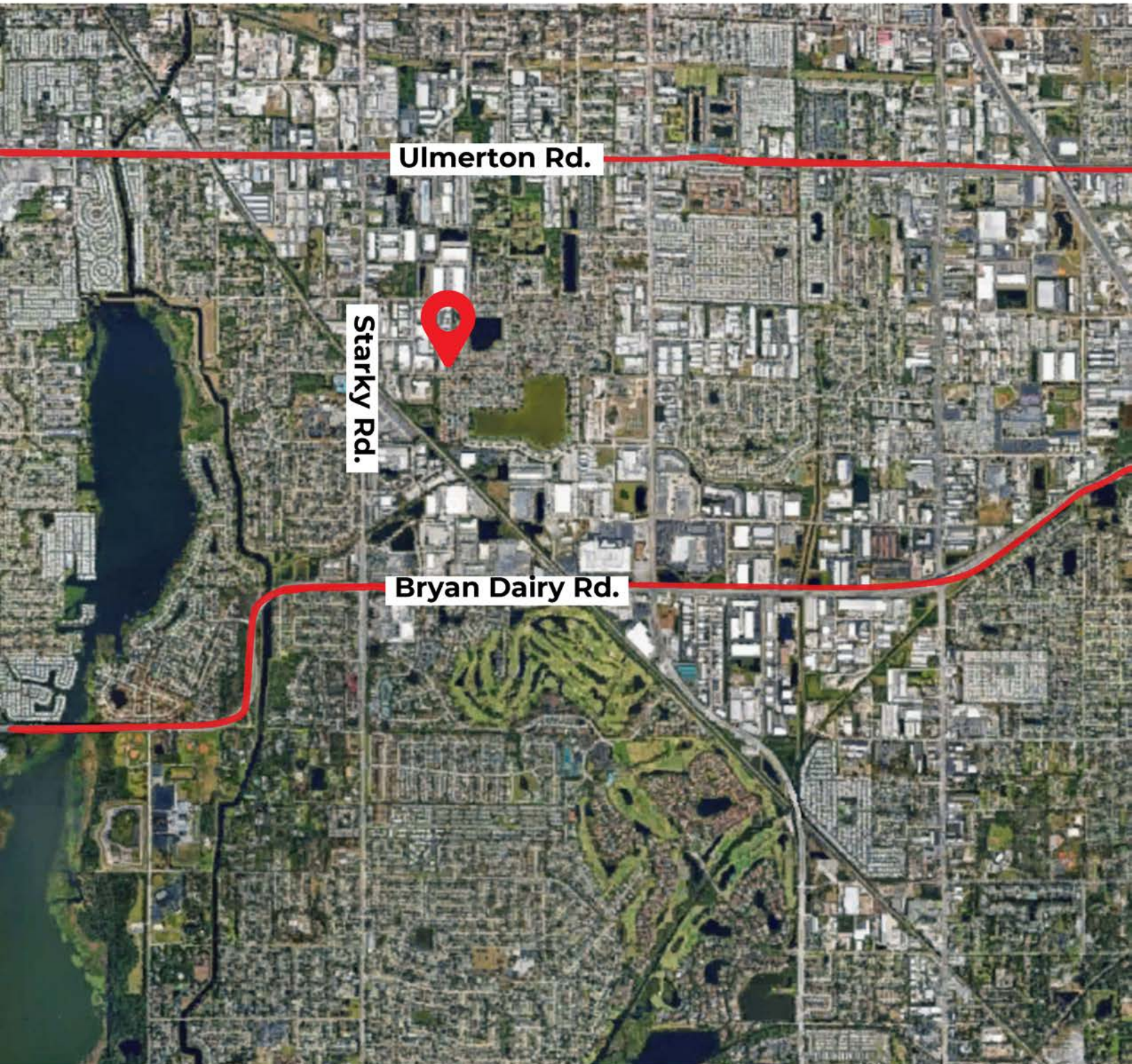
o o o o

PHOTOS





MARKET MAP



Vector Commercial Real Estate Services, LLC is a licensed Real Estate Brokerage. No warranties or representations, express or implied, are made as to the accuracy of the information contained herein, and same is submitted subject to omissions, changes of price, rental or other conditions, withdrawal without notice, and to any other limitations imposed by our principals.