

# ONE-OF-A-KIND TEMECULA AVIATION ESTATE

42160 Calle Barbona, Temecula, CA 92592

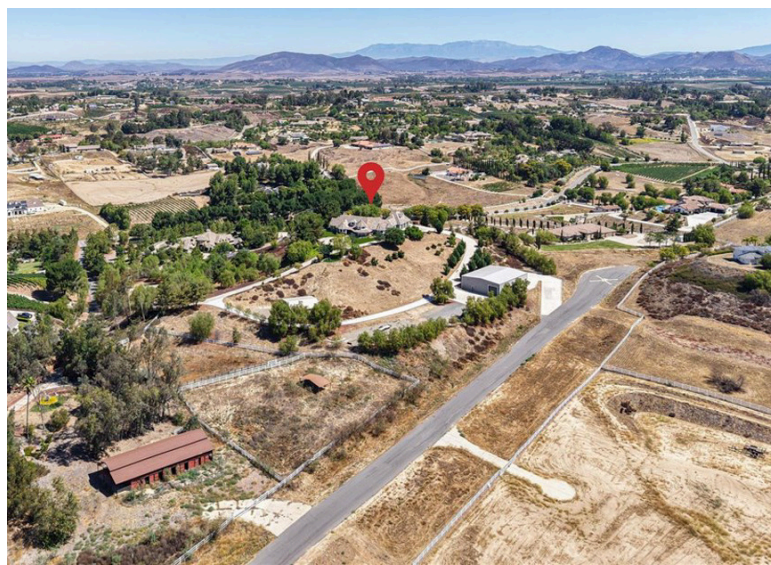


Acreage Home w/ Private Airstrip Access  
4,800 Sq Ft Hangar | 7.36 Acres | Wine Country Location

Fly-in convenience meets wine-country luxury with private airstrip access and a 4,800 sq ft hangar. Perched on 7.36 acres of Temecula wine country, this single-story home offers convenience alongside luxurious living. Step inside through a gated entry to a grand foyer with soaring ceilings that opens to a great room featuring a floor-to-ceiling stone fireplace and vaulted wood-beam ceilings. The chef's kitchen boasts stone countertops, a center island, separate breakfast bar and top-of-the-line stainless steel appliances. Panoramic orchard and mountain views frame the formal dining area. Retreat to the master suite with vaulted ceilings, a private fireplace and dual French doors leading to the landscaped backyard oasis. Enjoy a sparkling pool and spa, dual-sink vanity, jetted jacuzzi tub, large walk-in shower and his-and-hers closets. Three additional bedrooms include two en-suite baths and one versatile room currently used as a home office with its own private entrance. Beyond the home, aviation enthusiasts will love the covered storage adjacent to the hangar and the large, flat event area perfect for RVs, car shows or gatherings. A full-size lighted pickleball court and ample covered storage complete the outdoor amenities. With dramatic "360-degree" views, privacy and unparalleled access to a private runway, this rare Temecula property may never be matched. Schedule your private showing today and experience a lifestyle that combines luxury, recreation and aviation. You will NOT see a listing like this again...

Proudly presented by Cale Thomas and Elite Properties Direct





**CALE THOMAS** 951-473-0390 cthomas@epdre.com DRE 01248699



Property  
website



NOTE - Information is obtained from public sources and is deemed reliable but not guaranteed and should be independently verified with the appropriate professionals before the close of escrow

