

For Sale | For Lease

CBRE

# 905 Stockton Ave

San Jose, CA  
[www.cbre.com](http://www.cbre.com)

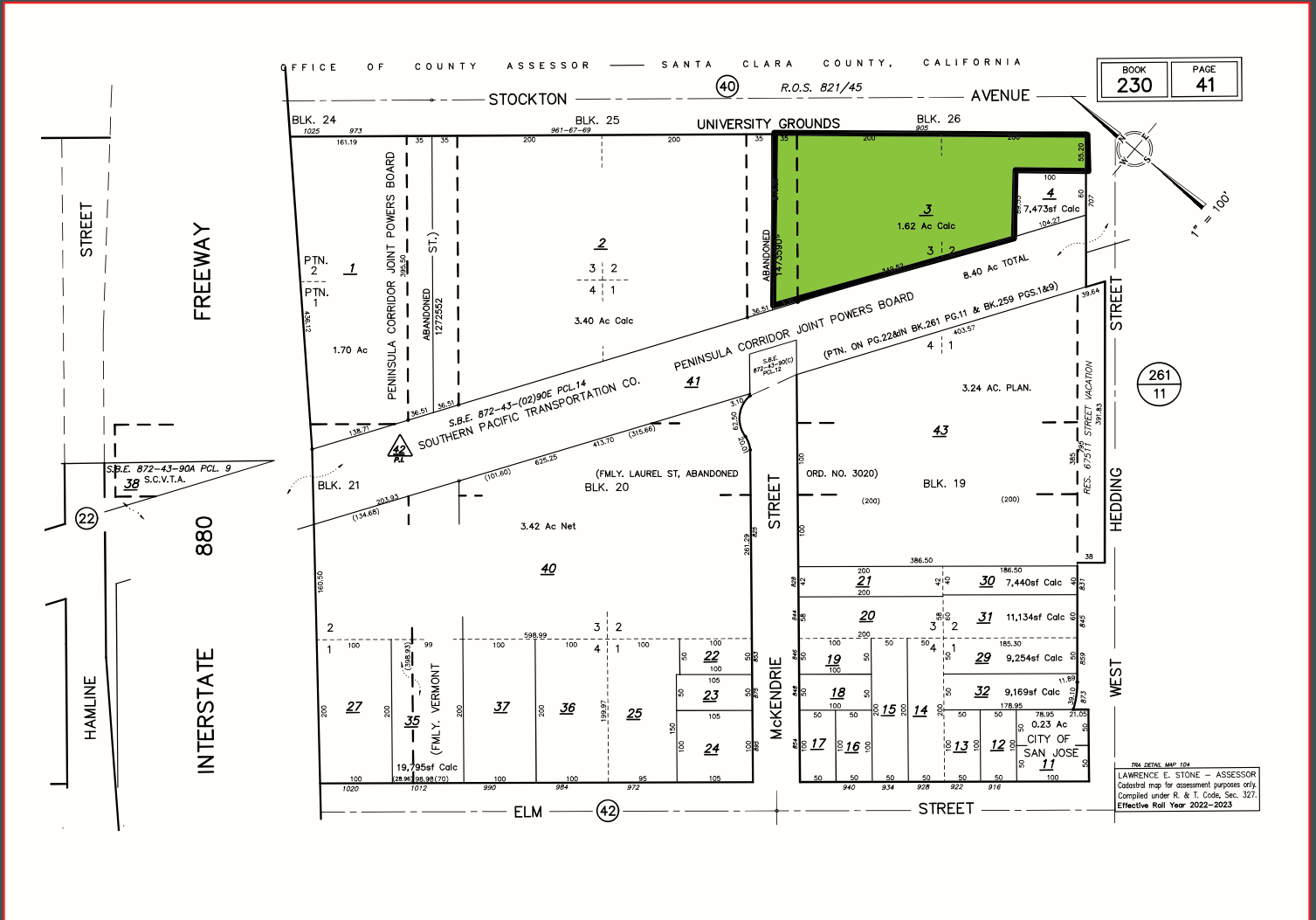
Owner-User / Development Opportunity



## Property Highlights

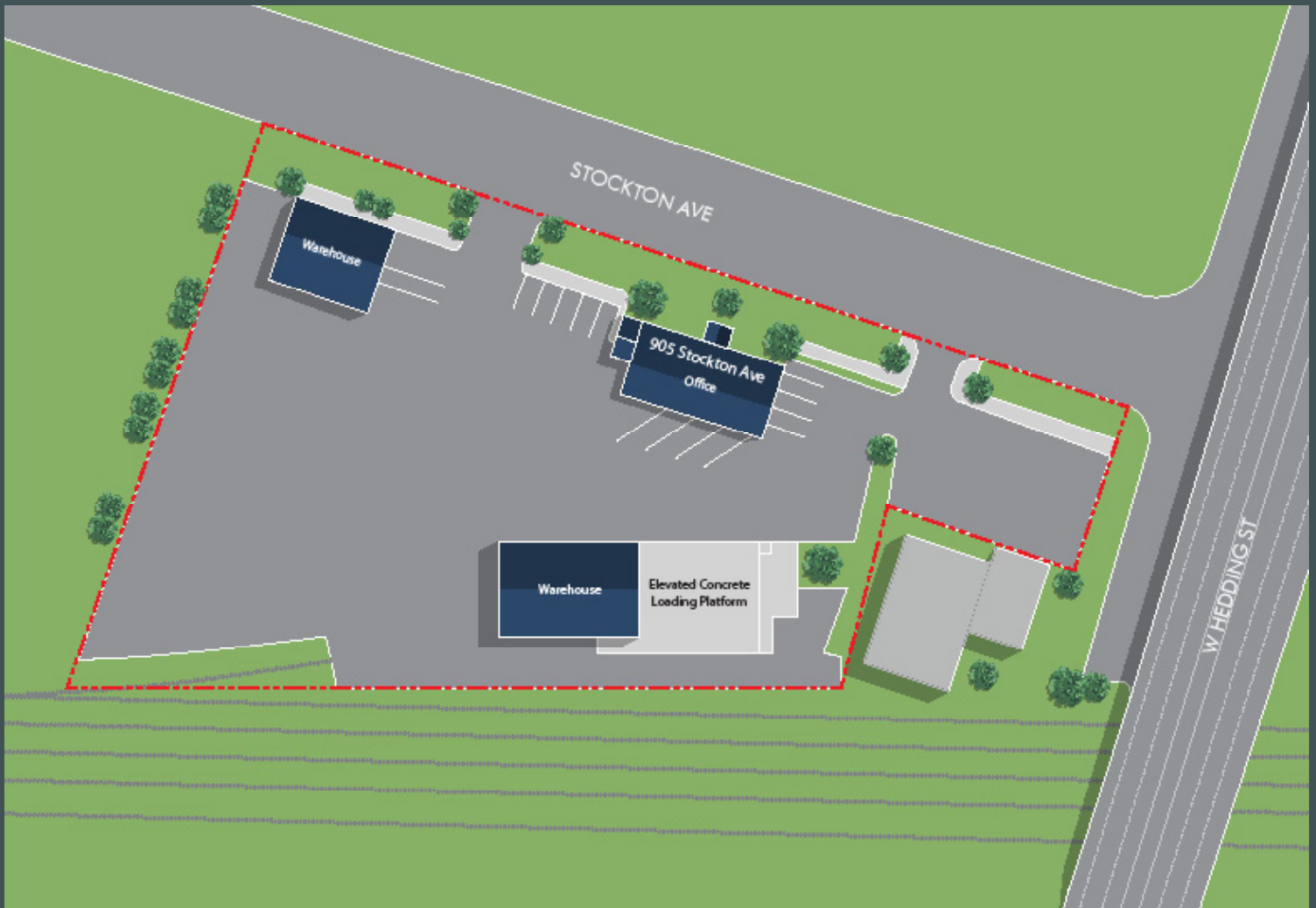
- + APN: 230-41-003
- + 1.62 AC Site
- + Approximately 2,600 SF Warehouse
- + Approximately 2,200 SF Office
- + Zoning: Light Industrial (LI)
- + GP: Light Industrial (LI)
- + Rail Spur
- + 1200 Amps / 480V / 3 phase
- + Call for Pricing

# Parcel Map



© 2024 CBRE, Inc. All rights reserved. This information has been obtained from sources believed reliable, but has not been verified for accuracy or completeness. You should conduct a careful, independent investigation of the property and verify all information. Any reliance on this information is solely at your own risk. CBRE and the CBRE logo are service marks of CBRE, Inc. All other marks displayed on this document are the property of their respective owners, and the use of such logos does not imply any affiliation with or endorsement of CBRE. Photos herein are the property of their respective owners. Use of these images without the express written consent of the owner is prohibited.

## Site Plan



## Contact Us

**Nick Whitstone**  
Senior Vice President  
+1 408 453 7438  
nick.whitstone@cbre.com  
Lic. 01196787

**Andrew Trillo**  
Senior Associate  
+1 408 453 7499  
andrew.trillo@cbre.com  
Lic. 02069367

© 2024 CBRE, Inc. All rights reserved. This information has been obtained from sources believed reliable, but has not been verified for accuracy or completeness. You should conduct a careful, independent investigation of the property and verify all information. Any reliance on this information is solely at your own risk. CBRE and the CBRE logo are service marks of CBRE, Inc. All other marks displayed on this document are the property of their respective owners, and the use of such logos does not imply any affiliation with or endorsement of CBRE. Photos herein are the property of their respective owners. Use of these images without the express written consent of the owner is prohibited.