

3057 Edinger Ave.

Tustin, California



Flex - Commercial Kitchen | Lab | R&D | Medical

±4,494 SF For Sale

NEWMARK

PRIME IRVINE BUSINESS COMPLEX LOCATION JAMBOREE PLAZA

- 2-story condo totaling ±4,494 SF
- 35% office (2-story)
- 60% flex/R&D/kitchen
- 5% warehouse (±175 SF)
- 96% HVAC
- 1 GL door
- Built out for commercial kitchen
- Kitchen equipment available for sale
- 3:1 parking (14 allocated / 4 dedicated)
- Adjacent to Tustin Station OCTA & Metrolink
- **Possible uses: commercial kitchen, lab, R&D, medical**



LOCATION

Jamboree Plaza is in Tustin, California, within the Irvine Business Complex submarket and 15 minutes from John Wayne Airport. The property sits adjacent to Tustin Station, served by OCTA and Metrolink, providing regional rail access north to Los Angeles and south to coastal Orange County and northern San Diego County—an advantage for commuting employees. The site offers convenient freeway connectivity to I-5, SR-55, SR-261, and I-405.

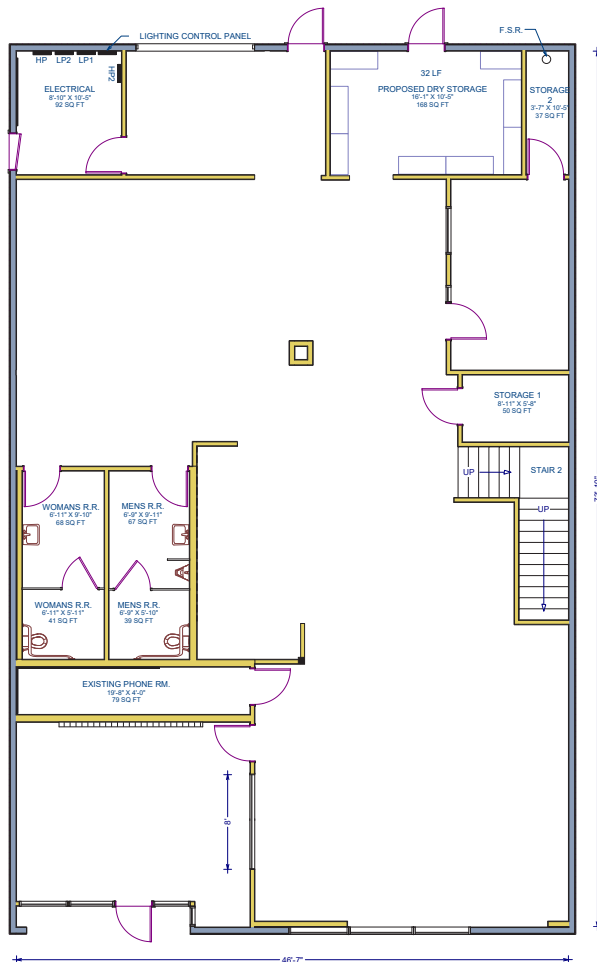
3057 Edinger is just 5 minutes from The District at Tustin Legacy, a premier shopping and entertainment destination, and less than a mile from The Market Place.

3057 Edinger Ave.

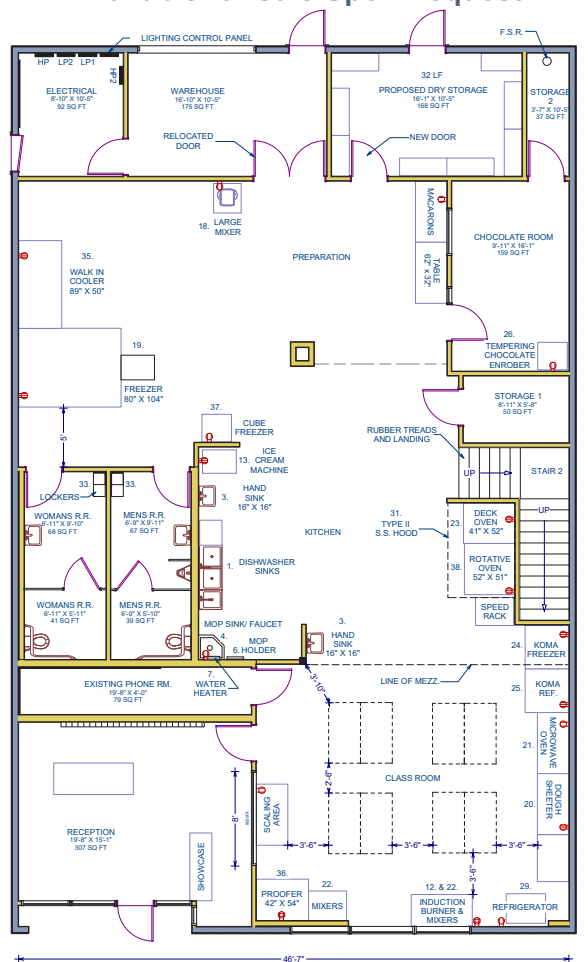
Tustin, California

±4,494 SF For Sale
 Flex - Commercial Kitchen | Lab | R&D | Medical

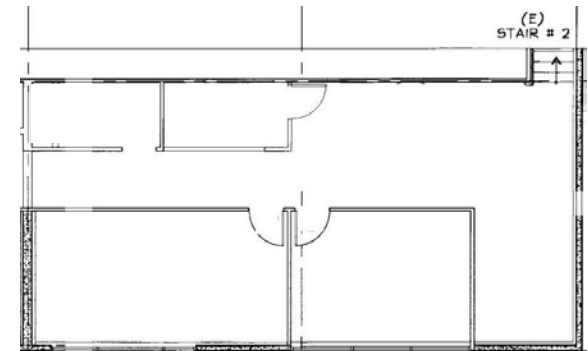
First Floor



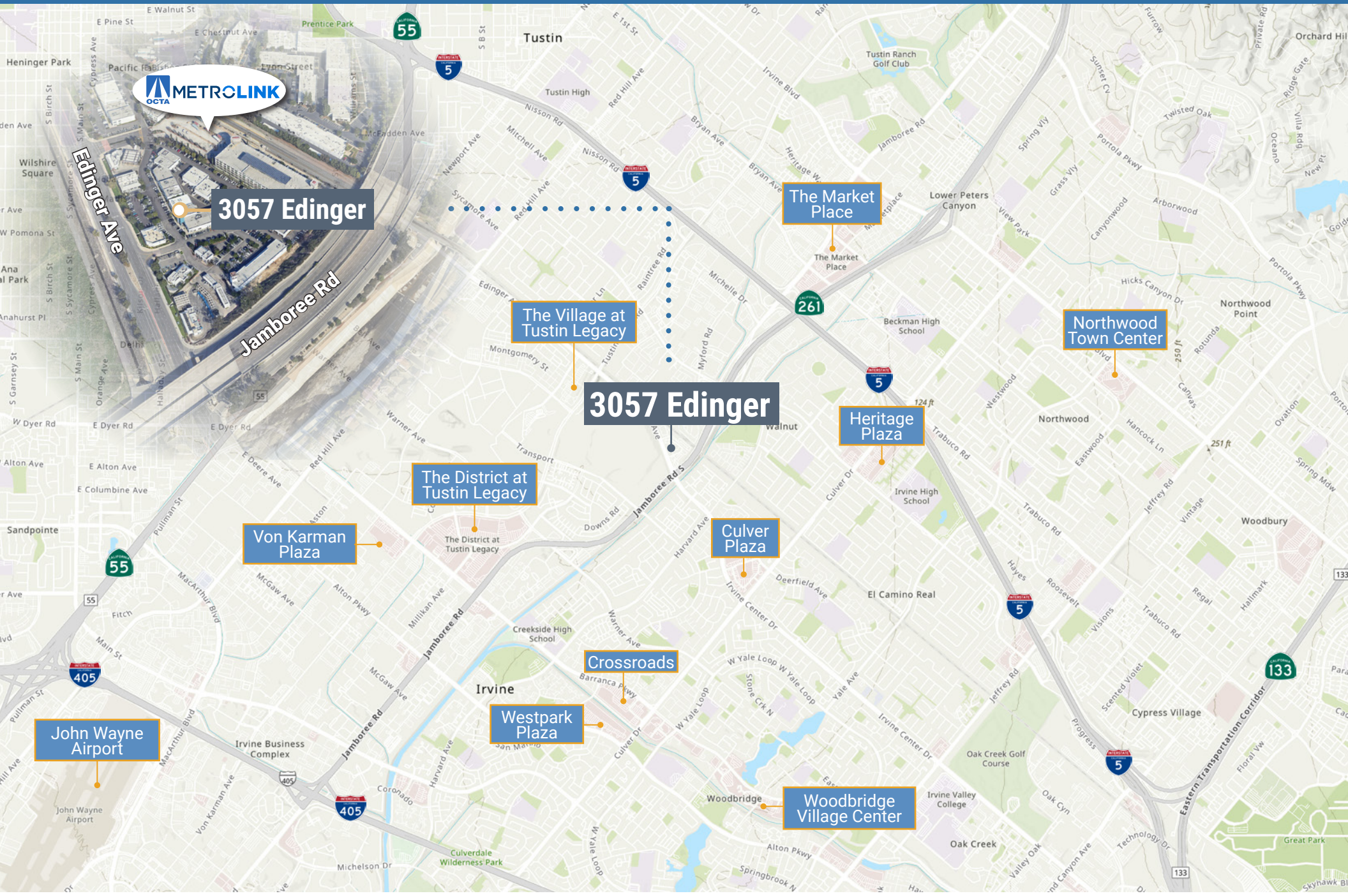
First Floor with Kitchen Equipment Available for Sale Upon Request



Second Floor



AREA MAP



3057 Edinger

3057 Edinger

The Market Place

The Village at Tustin Legacy

Northwood Town Center

The District at Tustin Legacy

Heritage Plaza

Von Karman Plaza

Culver Plaza

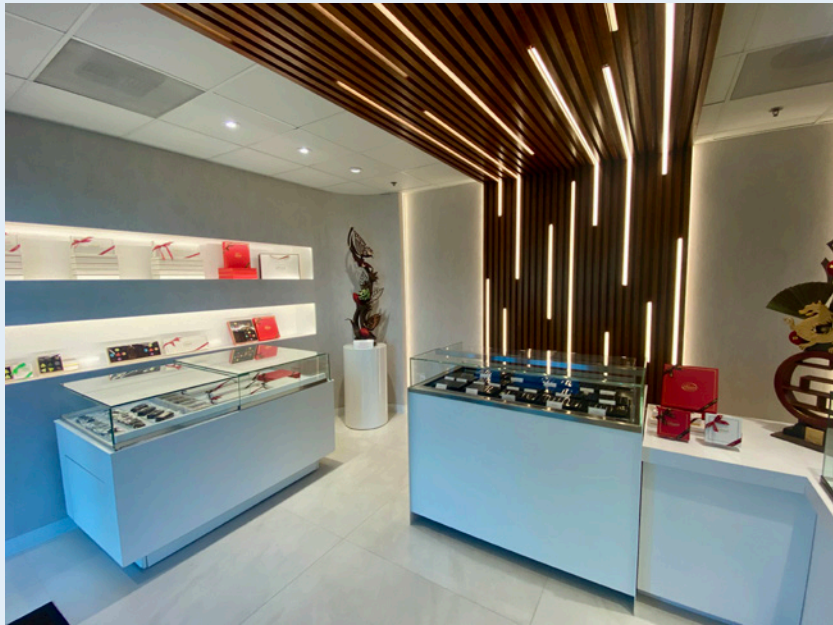
Crossroads

Westpark Plaza

Woodbridge Village Center

John Wayne Airport

KITCHEN



RECEPTION / SHOWROOM



REAR

3057 Edinger Ave.

Tustin, California



TROY WOOTON
Senior Managing Director
t 949-608-2020
troy.wooton@nmrk.com
CA RE Lic. #01377431

ZAC FIELDER
Director
t 949-608-2121
zac.fielder@nmrk.com
CA RE Lic. #01989549

NEWMARK

The information contained herein has been obtained from sources deemed reliable but has not been verified and no guarantee, warranty or representation, either express or implied, is made with respect to such information. Terms of sale or lease and availability are subject to change or withdrawal without notice.

Corporate License #10355491