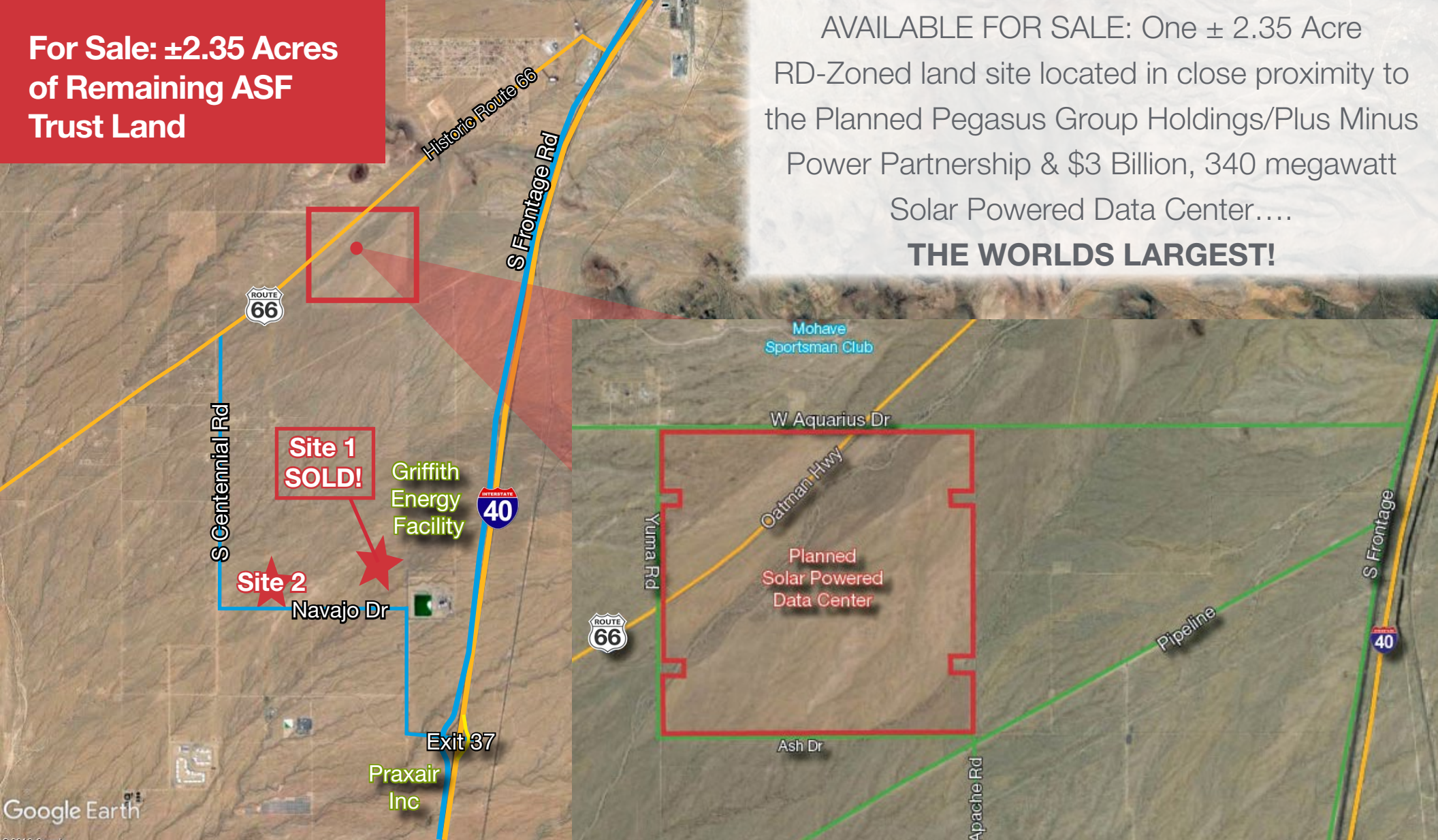


**For Sale: ±2.35 Acres
of Remaining ASF
Trust Land**

AVAILABLE FOR SALE: One ± 2.35 Acre
RD-Zoned land site located in close proximity to
the Planned Pegasus Group Holdings/Plus Minus
Power Partnership & \$3 Billion, 340 megawatt
Solar Powered Data Center....
THE WORLDS LARGEST!



S Mohave Trail & W Navajo Dr (SOLD)
S Yavapai Rd & W Navajo Dr
Golden Valley, AZ 86413

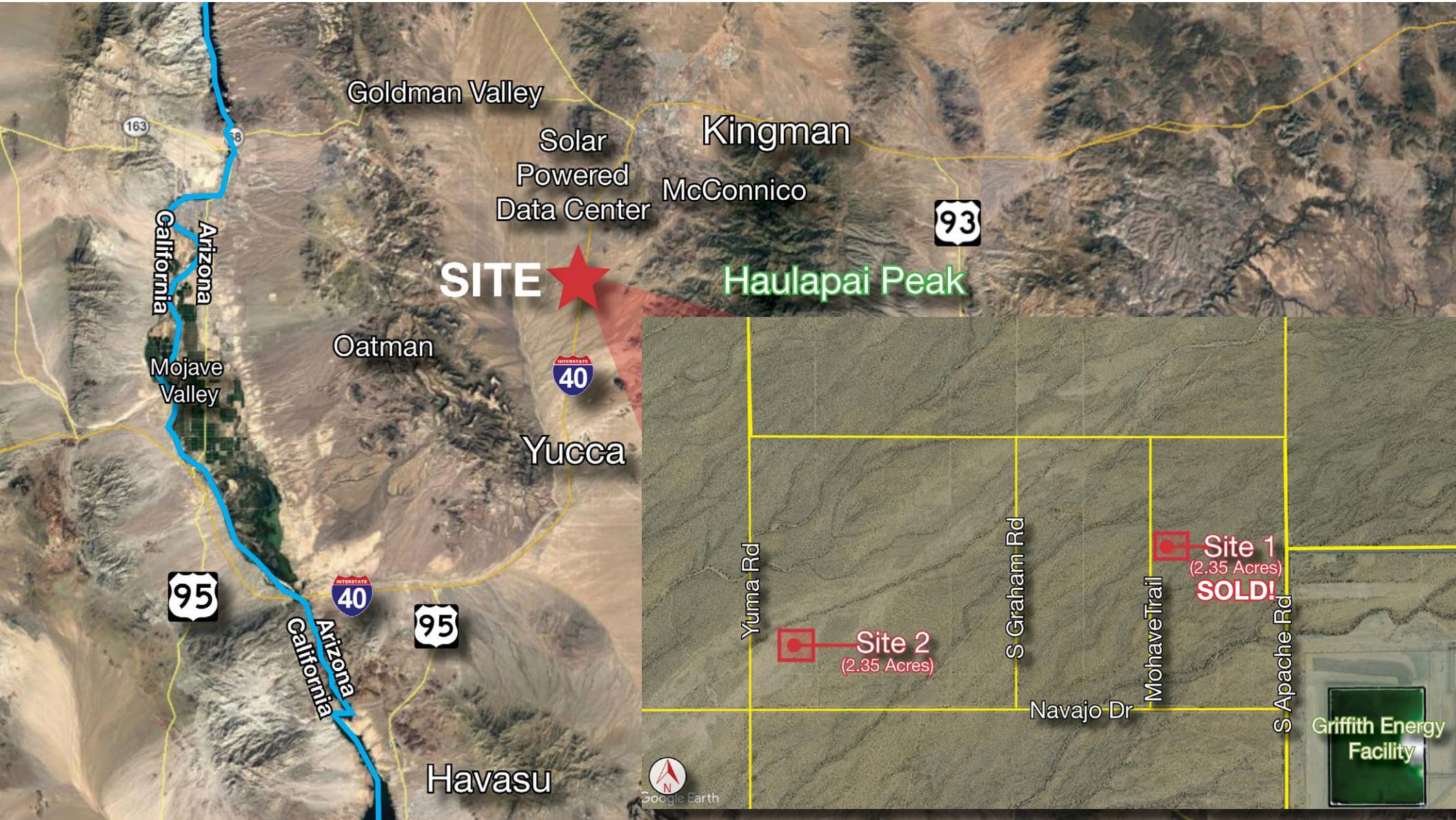
For more information:
John Filli, SIOR
+1 602 852 3411
john.filli@naihorizon.com

NO WARRANTY OR REPRESENTATION, EXPRESS OR IMPLIED, IS MADE AS TO THE ACCURACY OF THE INFORMATION CONTAINED HEREIN, AND THE SAME IS SUBMITTED SUBJECT TO ERRORS, OMISSIONS, CHANGE OF PRICE, RENTAL OR OTHER CONDITIONS, PRIOR SALE, LEASE OR FINANCING, OR WITHDRAWAL WITHOUT NOTICE, AND OF ANY SPECIAL LISTING CONDITIONS IMPOSED BY OUR PRINCIPALS NO WARRANTIES OR REPRESENTATIONS ARE MADE AS TO THE CONDITION OF THE PROPERTY OR ANY HAZARDS CONTAINED THEREIN ARE ANY TO BE IMPLIED.

2944 N 44th Street, Suite 200
Phoenix, Arizona 85018
+1 602 955 4000
naihorizon.com

NAIHorizon

±2.35 Acres of Land Still Available For Sale



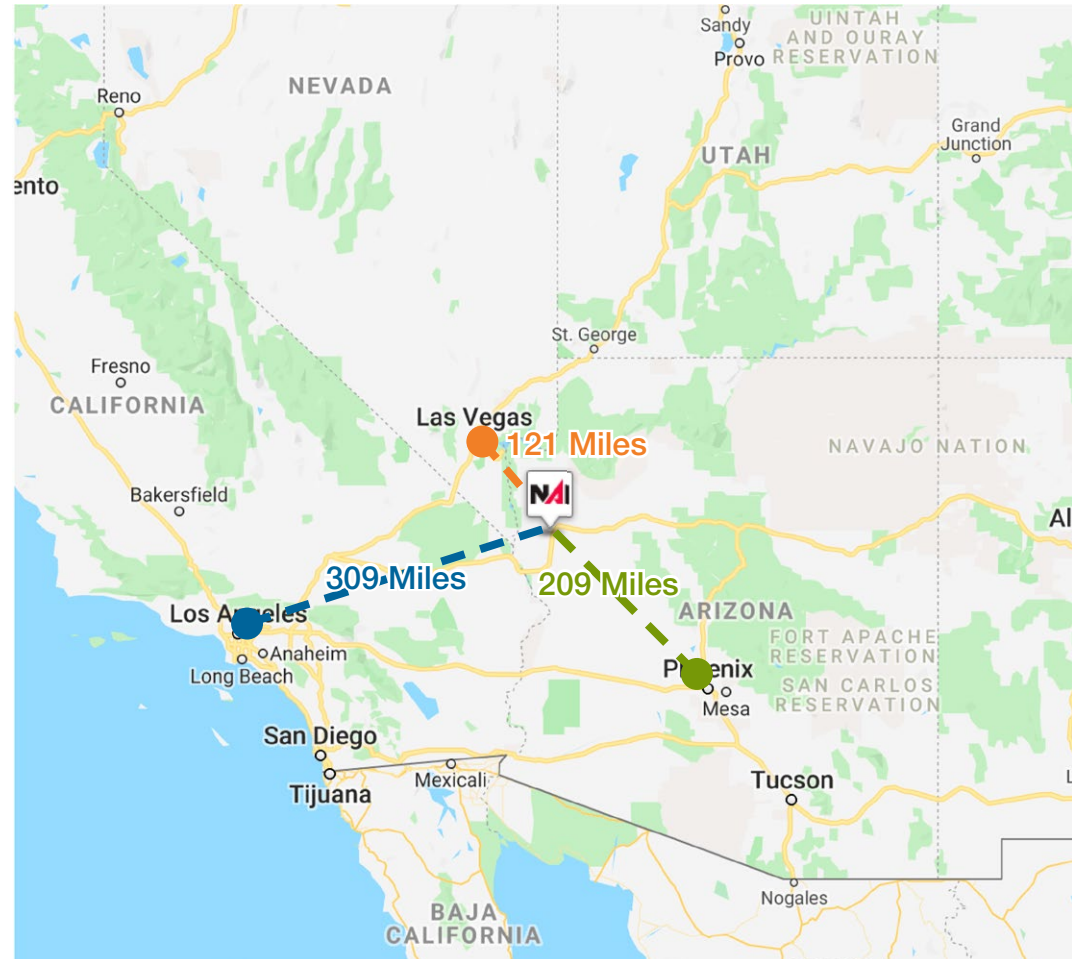
John Filli, SIOR
+1 602 852 3411
john.filli@naihorizon.com

NAIHorizon

±2.35 Acres of Land Still Available For Sale

Property & Location Highlights

- Electric & natural gas service to site is available from Unisource Electric & Use
- Potable water supply available from an underlying aquifer
- The site is approximately 15 miles south of Kingman and 55 miles along I-40 from the California border
- Easy access to and from I-40 via exit 37
- I-40 is located about 1 mile and 1.5 miles east of Site 1 and Site 2, respectively
- Site attributes include great proximity to market, transportation & Labor
- Location of site allows for easy access to LA, LV and Phoenix
- There are more than 32 million people within a 350 mile radius of the site
- The Burlington Northern Santa Fe Railway is located approximately .38 miles east of I-40
- The sites are approximately 25 miles east of the California border
- [Click to View the Mohave County News Release](#)
- [Click to View Press Release on the New \\$3B, 340 Megawatt Solar Powered Data Center Near](#)



Sale Price: \$72,000 (\$30,638/AC) (\$.70/SF)

John Filli, SIOR

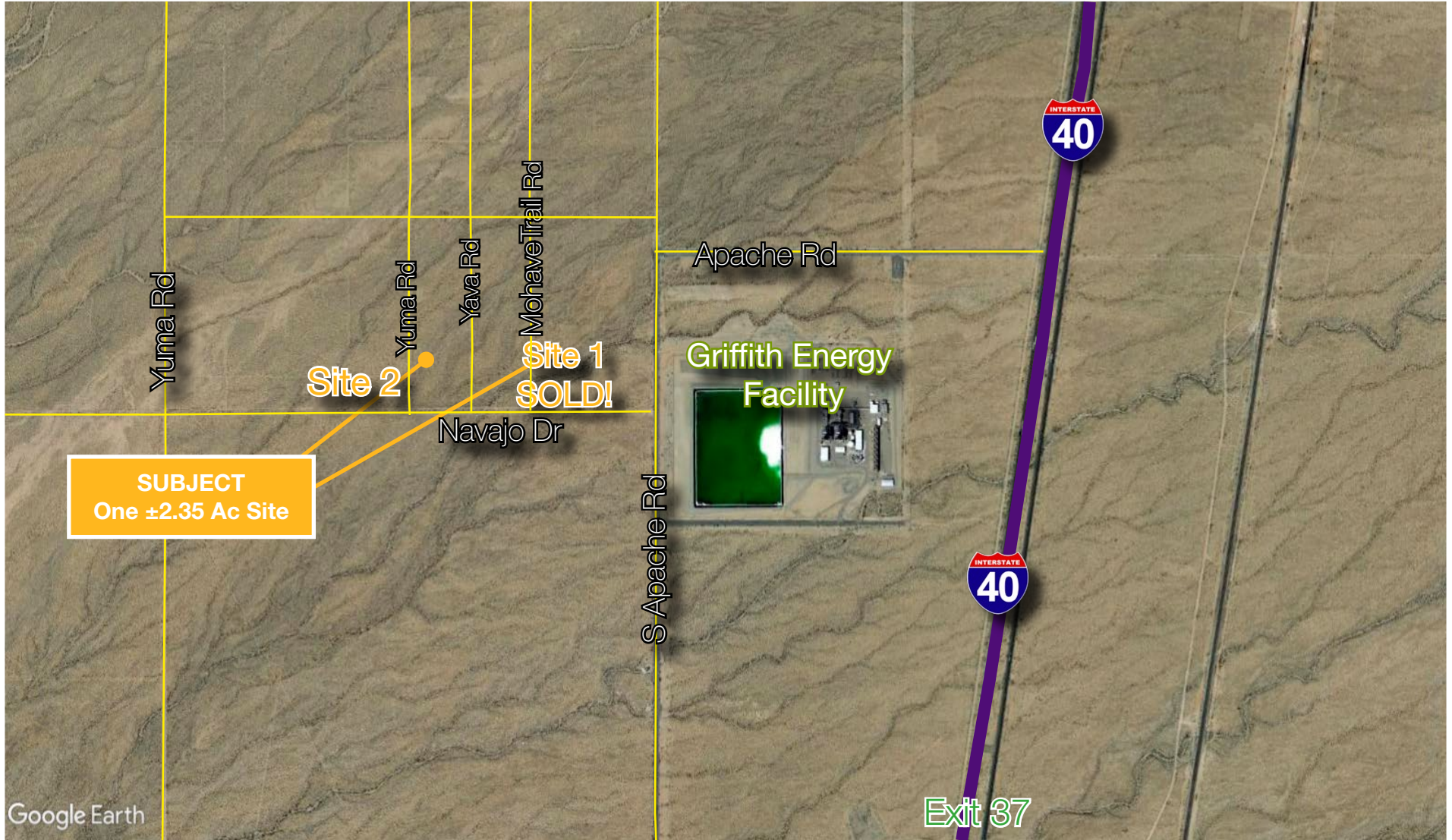
+1 602 852 3411

john.filli@naihorizon.com

NAIHorizon

±2.35 Acres of Land Still Available For Sale

Property Aerial



John Filli, SIOR
+1 602 852 3411
john.filli@naihorizon.com

NAIHorizon