

# LIGHTHOUSE BUILDING

*±14,000 - ±100,000 RSF of  
Contiguous Office Space Available for  
Lease in San Francisco's Civic Center*

1155 MARKET STREET, SAN FRANCISCO, CA, 94103

1155MARKET.COM

**km** Kidder  
Mathews



LIGHTHOUSE BUILDING

# AMENITIES FOR THE MODERN WORKSPACE



±100,000 RSF  
LARGE BLOCK



CLASS A  
OFFICE BUILDING



24/7 ON-SITE  
SECURITY



PARKING AVAILABLE  
ON-SITE



SHOWERS



BIKE STORAGE



CIVIC CENTER BART  
STATION OUT FRONT



SEVERAL ENSUITE  
OPEN PATIOS



FULL HVAC



ON-SITE ENGINEER

AVAILABLE FOR LEASE

KIDDER MATHEWS

## LIGHTHOUSE BUILDING



*With a convenient downtown San Francisco location, the Lighthouse Building is an excellent option for employers looking to be at the heart of Civic Center.*

100

TRANSIT SCORE

98

WALK SCORE

24/7

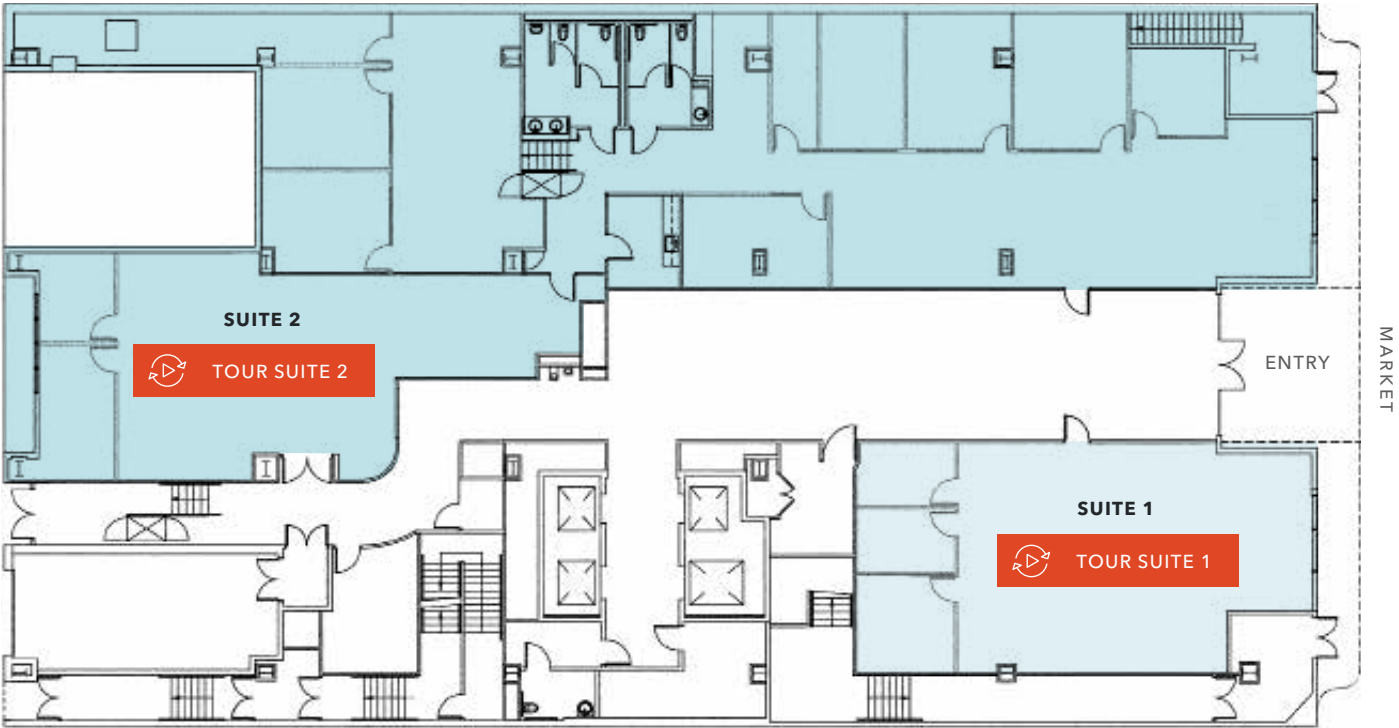
SECURITY

14

PARKING SPACES

ADDRESS	1155 Market St, San Francisco, CA, 94103
YEAR BUILT	1983
RENTABLE BUILDING AREA	±103,151 RSF
STORAGE	Bike storage and showers
ELEVATORS	4
SPRINKLERS	Yes
PARKING RATIO	0.15/1,000 PSF
PARCEL NUMBER	3702-820

# GROUND FLOOR PLAN



FLOOR PLAN NOT TO SCALE



AVAILABLE FOR LEASE

*±1,620 SF*

SUITE 1

*±6,498 SF*

SUITE 2

*NEGOTIABLE*

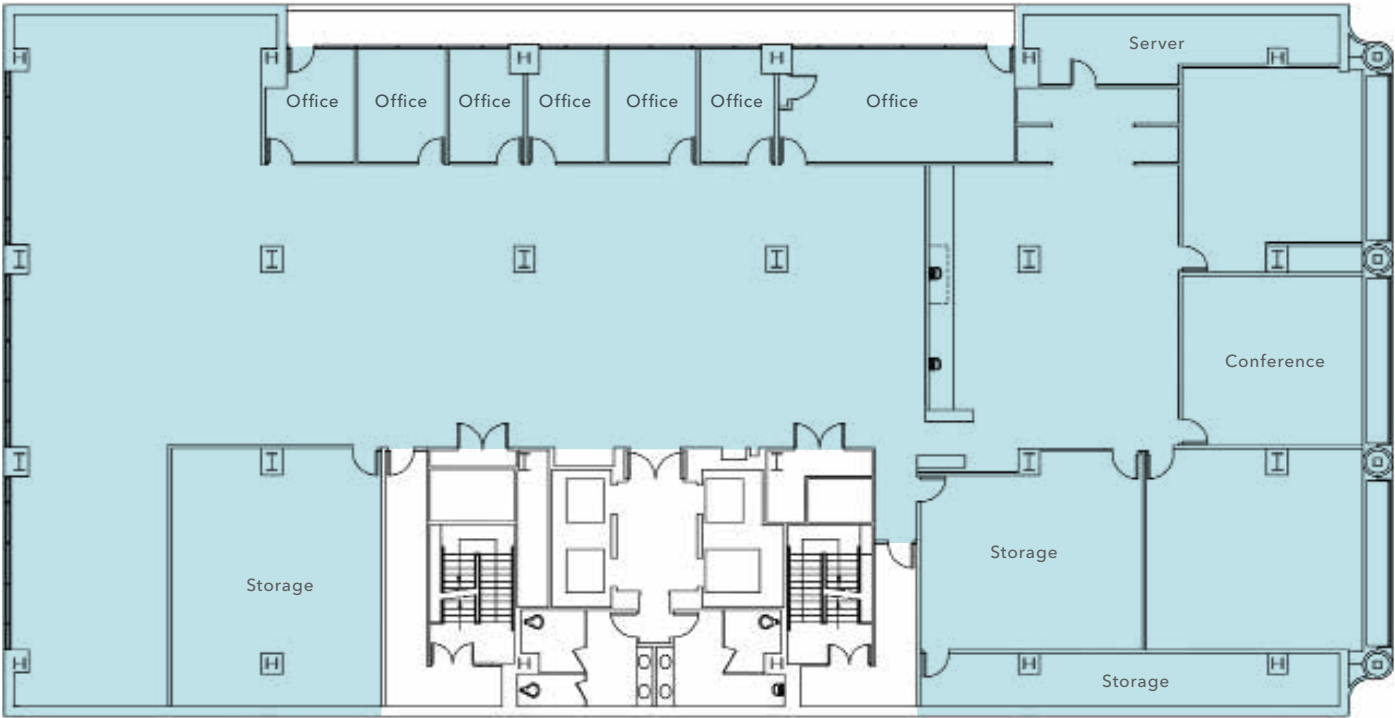
LEASE RATE (SF/YR)

*NOW*

AVAILABLE



SECOND FLOOR PLAN



*±14,945 SF*

AVAILABLE

*NEGOTIABLE*

LEASE RATE (SF/YR)

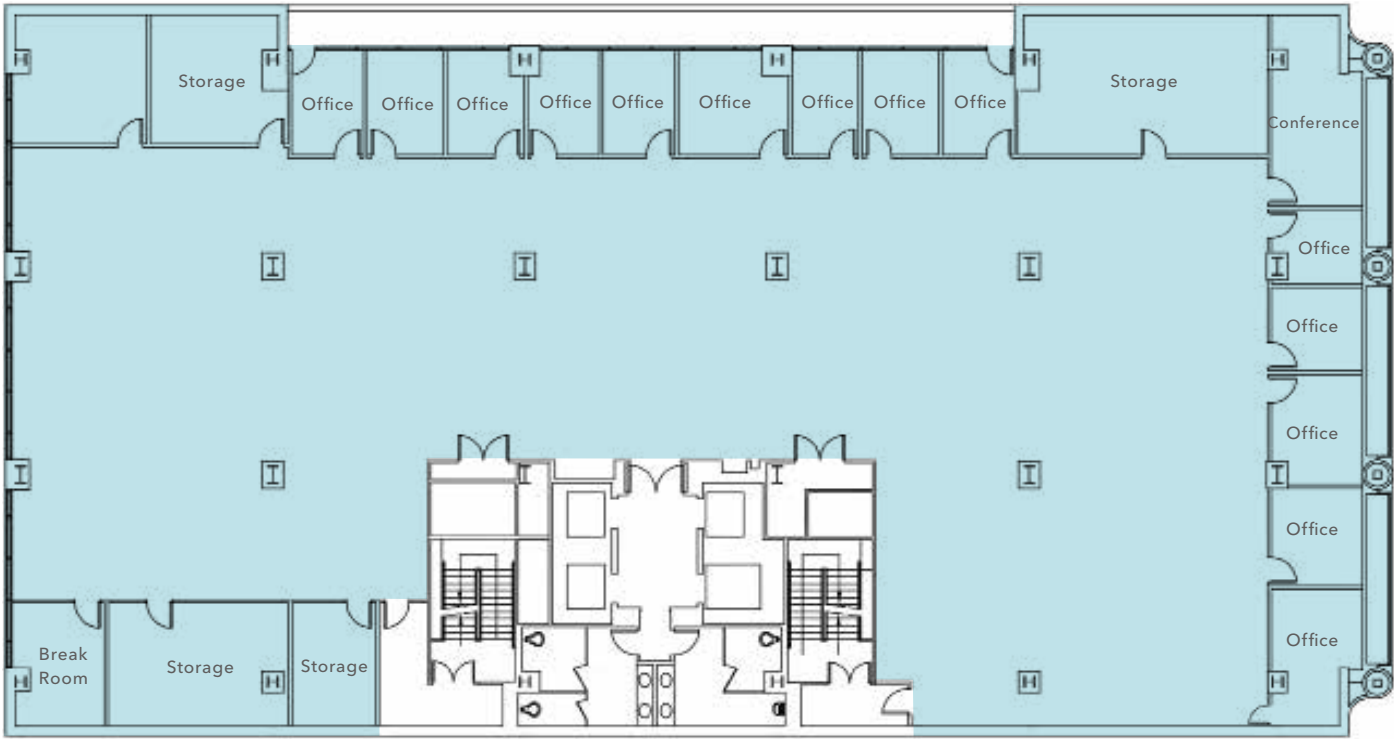
*NOW*

AVAILABLE

FLOOR PLAN NOT TO SCALE



THIRD FLOOR PLAN



FLOOR PLAN NOT TO SCALE



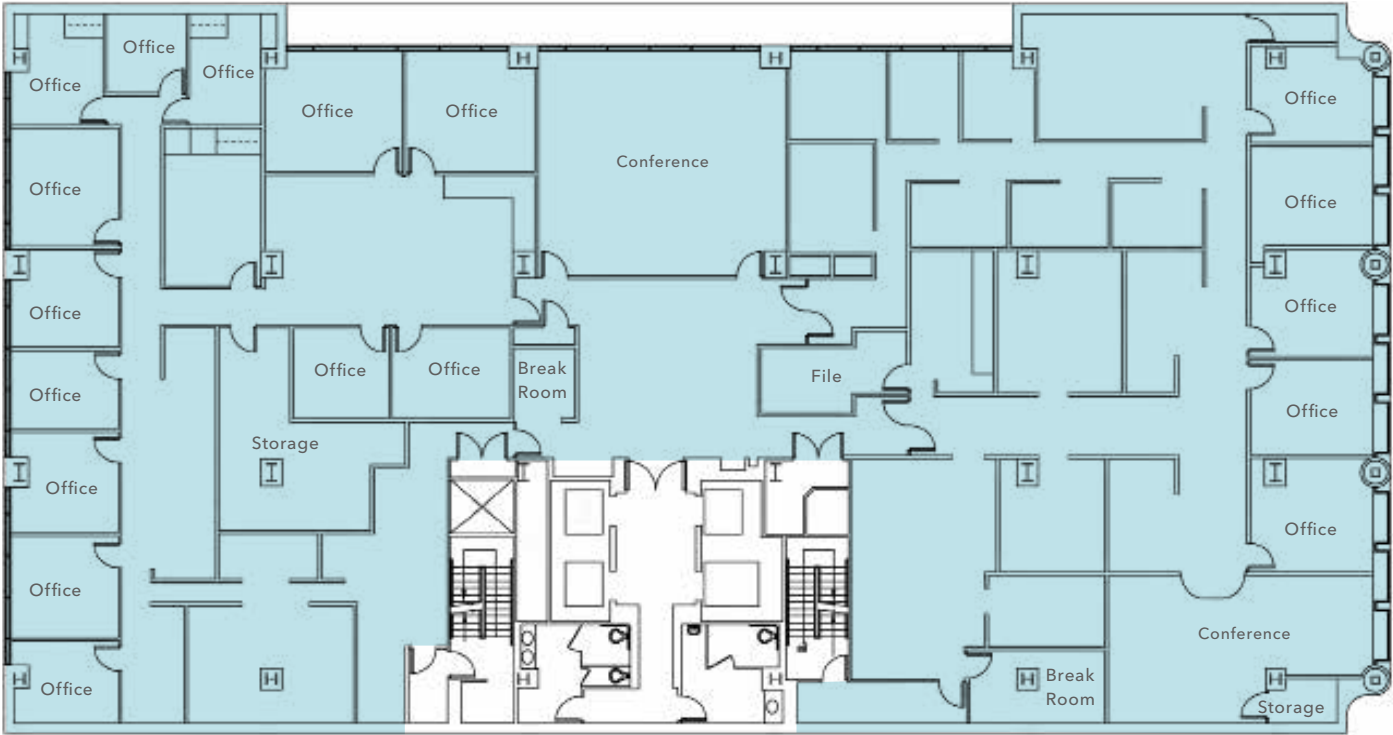
AVAILABLE FOR LEASE

*±14,473 SF*  
AVAILABLE

*NEGOTIABLE*  
LEASE RATE (SF/YR)

*NOW*  
AVAILABLE

FOURTH FLOOR PLAN



*±14,659 SF*

AVAILABLE

*NEGOTIABLE*

LEASE RATE (SF/YR)

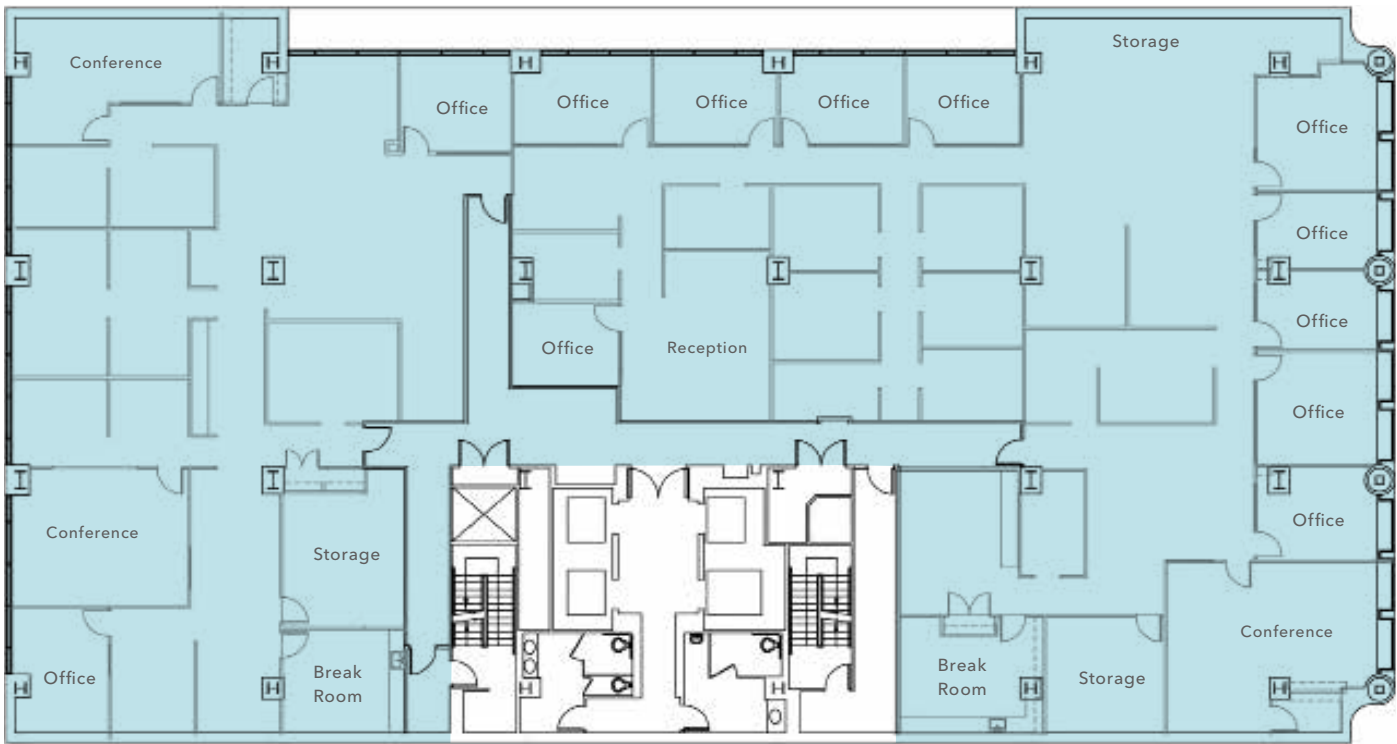
*NOW*

AVAILABLE

FLOOR PLAN NOT TO SCALE



FIFTH FLOOR PLAN



*±14,659 SF*

AVAILABLE

*NEGOTIABLE*

LEASE RATE (SF/YR)

*NOW*

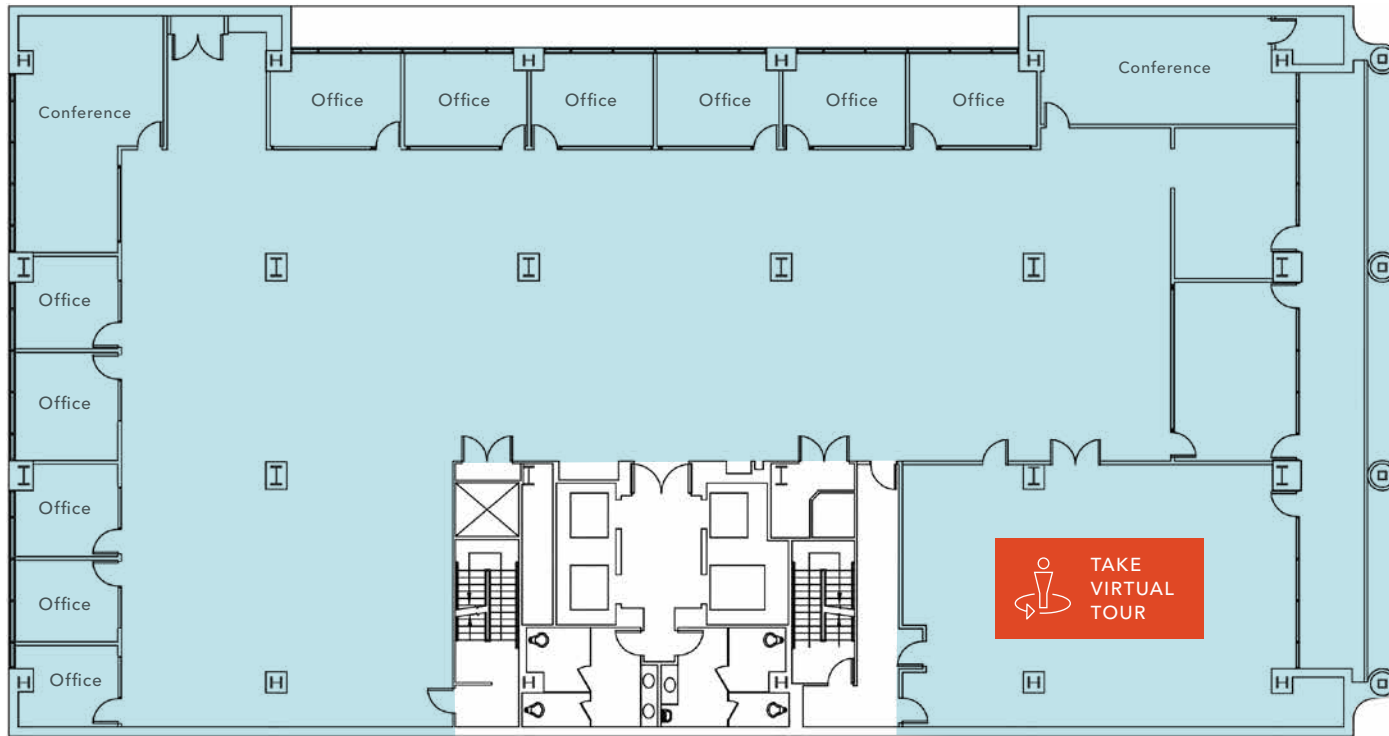
AVAILABLE

FLOOR PLAN NOT TO SCALE





## SIXTH FLOOR PLAN



FLOOR PLAN NOT TO SCALE



AVAILABLE FOR LEASE

*±14,350 SF*

AVAILABLE

*DIVISIBLE TO  
±5,000 SF*

*NEGOTIABLE*

LEASE RATE (SF/YR)

*NOW*

AVAILABLE

LIGHTHOUSE BUILDING

---

## SIXTH FLOOR KITCHEN

AVAILABLE FOR LEASE

KIDDER MATHEWS

LIGHTHOUSE BUILDING

---



SIXTH FLOOR OFFICE SPACE

AVAILABLE FOR LEASE

KIDDER MATHEWS



## LIGHTHOUSE BUILDING

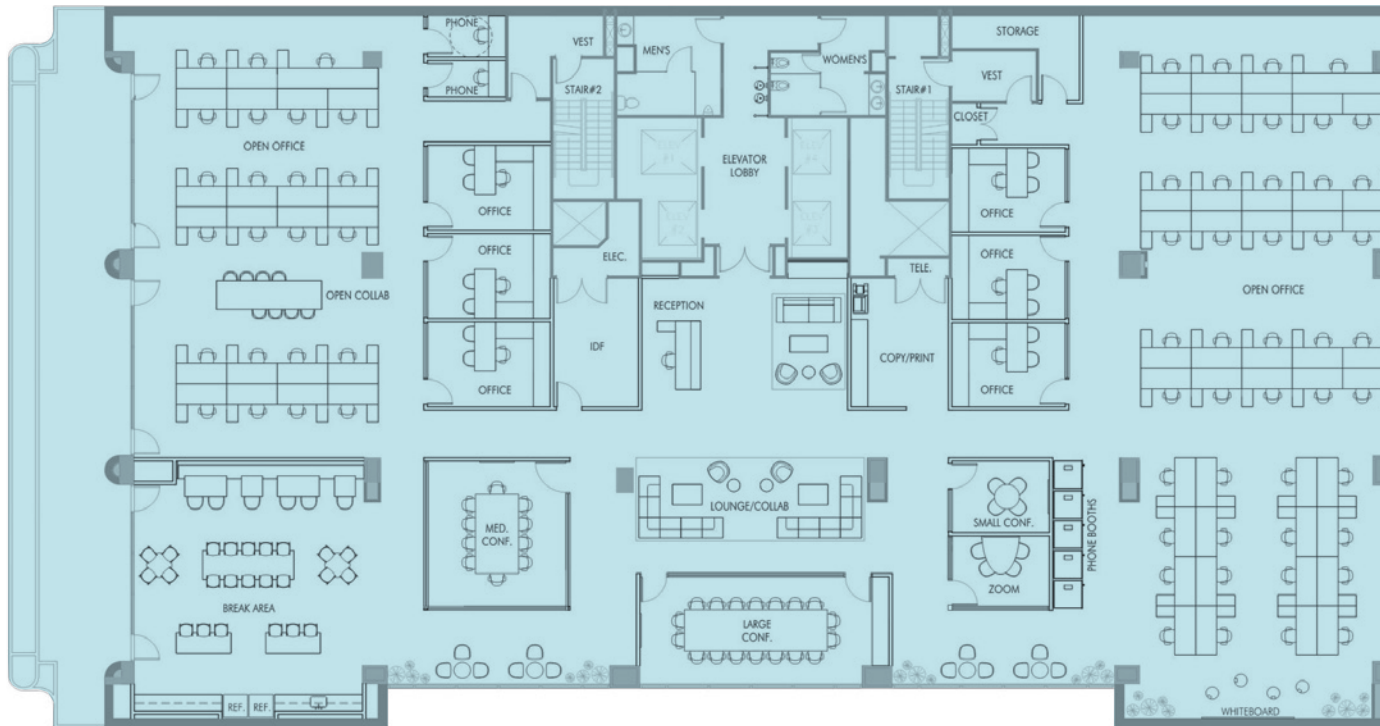
---



SIXTH FLOOR



## SEVENTH FLOOR - CREATIVE SPACE PLAN



*±14,350 SF*

AVAILABLE

*NEGOTIABLE*

LEASE RATE (SF/YR)

*NOW*

AVAILABLE

\*HYPOTHETICAL\* FLOOR PLAN NOT TO SCALE







LIGHTHOUSE BUILDING

# CREATIVE RENDERING

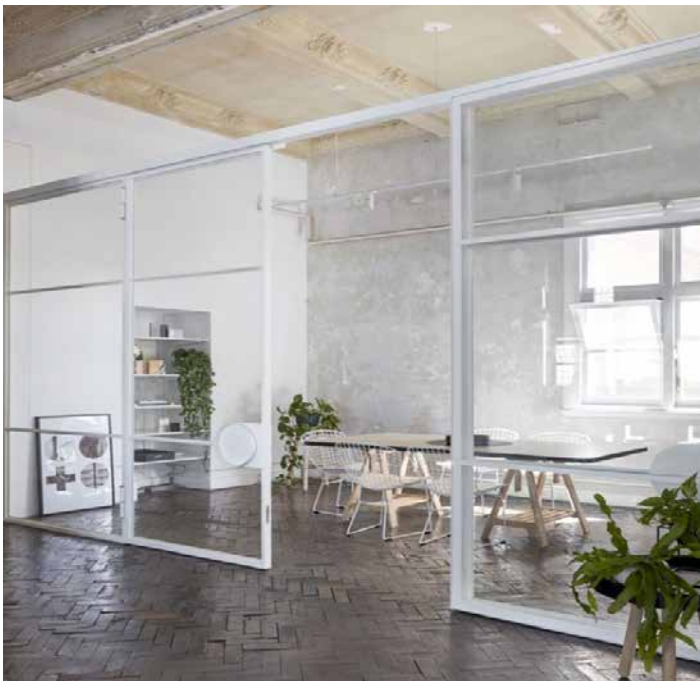
*Generous Tenant Improvement  
Package Available.*

AVAILABLE FOR LEASE

KIDDER MATHEWS



CREATIVE  
LOOK & FEEL





CREATIVE  
LOOK & FEEL



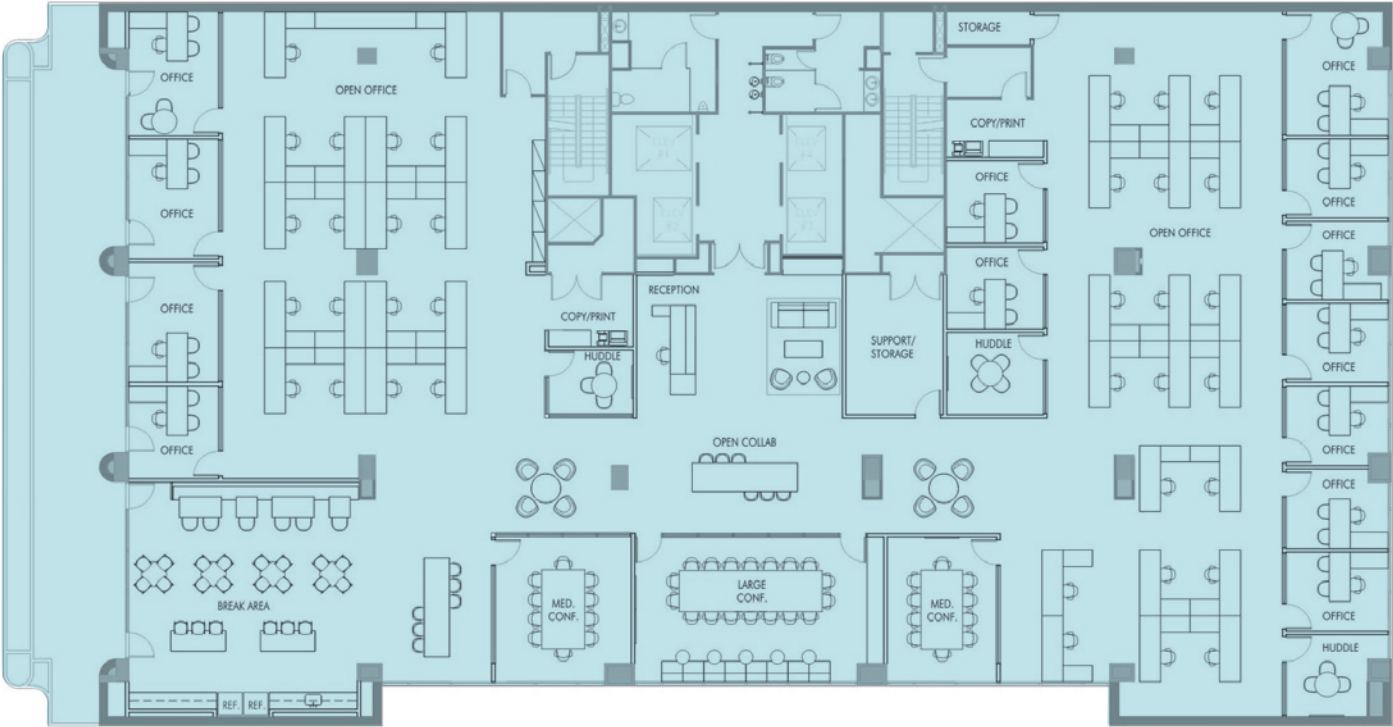




## CREATIVE - PRELIMINARY 3D VIEW



SEVENTH FLOOR - PROFESSIONAL SPACE PLAN



\*HYPOTHETICAL\* FLOOR PLAN NOT TO SCALE



AVAILABLE FOR LEASE

*±14,350 SF*

AVAILABLE

*NEGOTIABLE*

LEASE RATE (SF/YR)

*NOW*

AVAILABLE

LIGHTHOUSE BUILDING

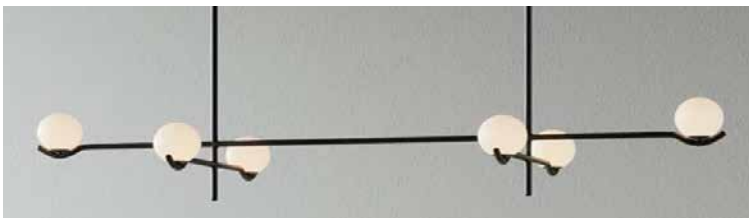
# PROFESSIONAL RENDERING

*Generous Tenant Improvement  
Package Available.*

AVAILABLE FOR LEASE

KIDDER MATHEWS

PROFESSIONAL  
LOOK & FEEL





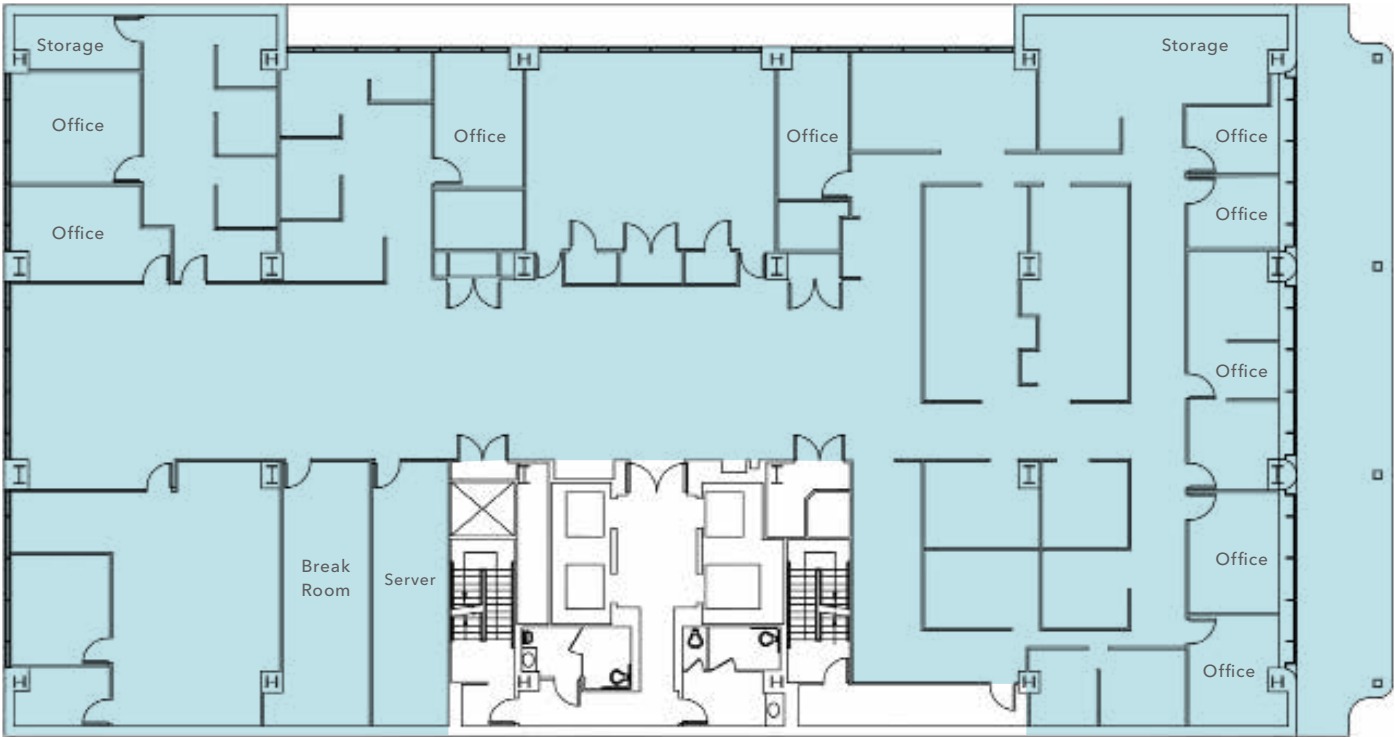
PROFESSIONAL  
LOOK & FEEL





## PROFESSIONAL - PRELIMINARY 3D VIEW

EIGHTH FLOOR PLAN



FLOOR PLAN NOT TO SCALE



AVAILABLE FOR LEASE

*±13,604 SF*

AVAILABLE

*NEGOTIABLE*

LEASE RATE (SF/YR)

*NOW*

AVAILABLE



# HIGHLY- ACCESSIBLE LOCATION

*Strategically positioned on Market Street, just steps from Civic Center BART Station, offering unmatched accessibility and convenience.*

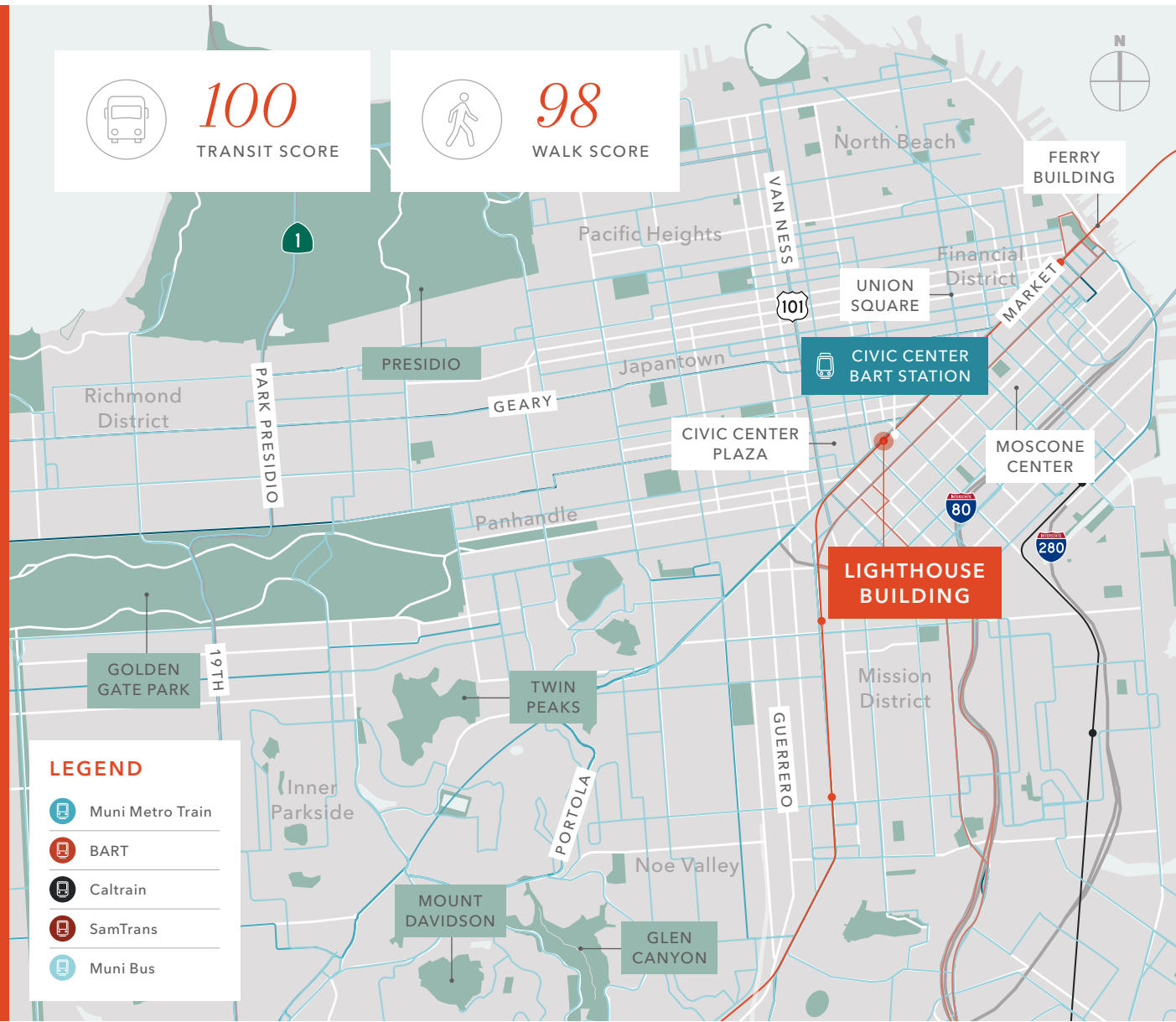
Close to Ferry Building, Union Square, Moscone Center, and Civic Center Plaza

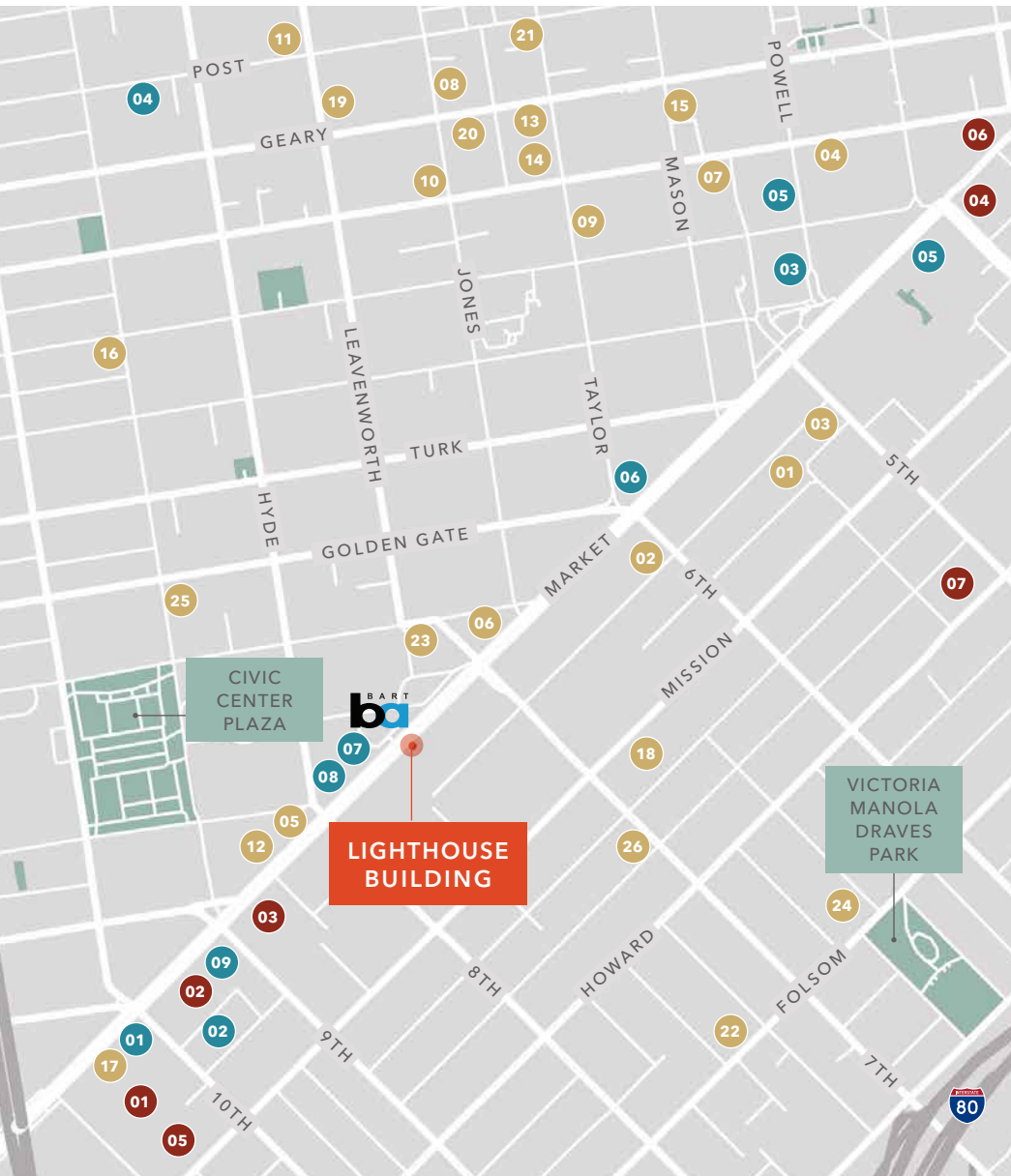
Conveniently located near major junctions of Highway 101, Highway 280, and I-80

Easy for visitors to locate

**1 MIN**  
TO BART STATION

**1 MIN**  
TO BUS STOP





## NEARBY AMENITIES

### FOOD & DRINKS

- |                               |                                    |
|-------------------------------|------------------------------------|
| 01 54 Mint Cucina Romana      | 14 Jasper's Corner Tap and Kitchen |
| 02 Montesacro Pinseria - SoMa | 15 Mason Diner                     |
| 03 Sushi Hashiri              | 16 Los Yucatecos Restaurant        |
| 04 ONE65                      | 17 Little Griddle @ Dough          |
| 05 Tadka SF Indian Restaurant | 18 Square Pie Guys                 |
| 06 Villon                     | 19 Rye Cocktail Bar                |
| 07 Johnny Foley's Irish House | 20 Bottle Club Pub                 |
| 08 620 Jones                  | 21 Owl Tree                        |
| 09 Cityscape                  | 22 HK Lounge Bistro                |
| 10 Bourbon & Branch           | 23 Ariscault Bakery                |
| 11 The Royale                 | 24 Deli Board                      |
| 12 Sam's American Eatery      | 25 Philz Coffee                    |
| 13 Tratto                     | 26 Caffe Moda                      |

### CORPORATE

- |                       |
|-----------------------|
| 01 Uber HQ            |
| 02 Microsoft          |
| 03 Dolby Laboratories |
| 04 Penrose Inc.       |
| 05 Square             |
| 06 Figma              |
| 07 Thumbtack, Inc.    |

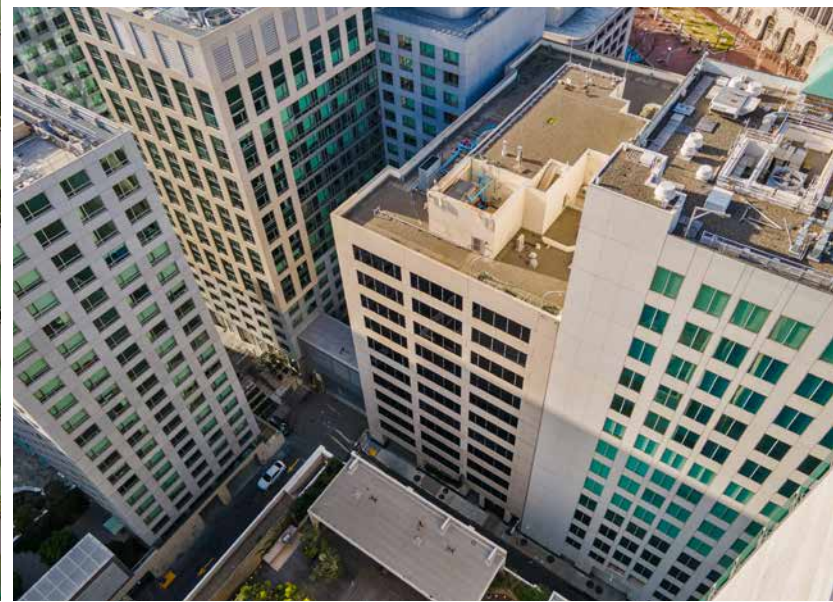
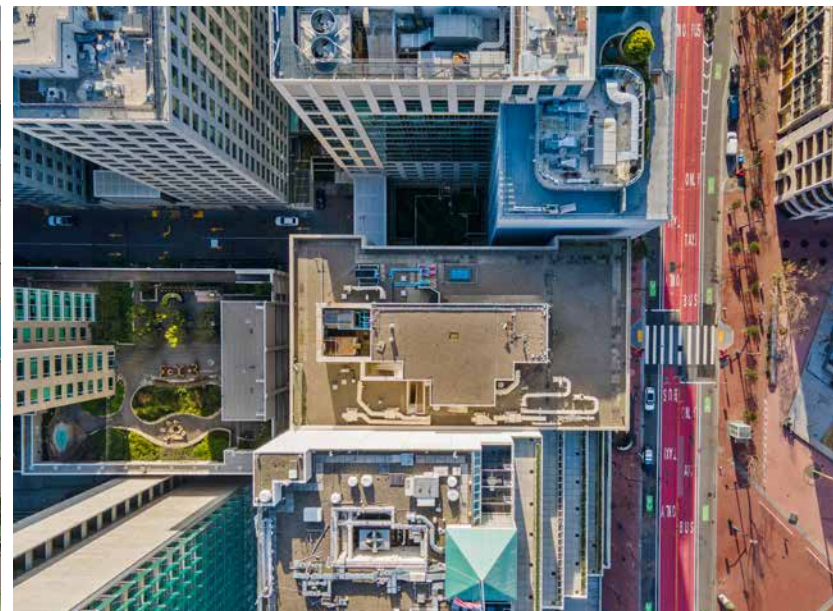
### LIFESTYLE & FITNESS

- |                                 |
|---------------------------------|
| 01 Orange Theory                |
| 02 Fitness SF                   |
| 03 Sephora                      |
| 04 San Francisco Movement Group |
| 05 Walgreen's                   |
| 06 The Warfield                 |
| 07 Fitness Court at UN Plaza    |
| 08 Orpheum Theater              |



# LIGHTHOUSE BUILDING

---



AVAILABLE FOR LEASE

KIDDER MATHEWS





*For leasing information, contact*

JIM WALKER  
415.229.8910  
jim.walker@kidder.com  
LIC N° 01750435

SCOTT VIX  
415.229.8924  
scott.vix@kidder.com  
LIC N° 01407761

BRUCE MCLELLAN  
415.229.8981  
bruce.mclellan@kidder.com  
LIC N° 008570071

1155MARKET.COM

This information supplied herein is from sources we deem reliable. It is provided without any representation, warranty, or guarantee, expressed or implied as to its accuracy. Prospective Buyer or Tenant should conduct an independent investigation and verification of all matters deemed to be material, including, but not limited to, statements of income and expenses. Consult your attorney, accountant, or other professional advisor. All Kidder Mathews designs are the sole property of Kidder Mathews. Branded materials and layouts are not authorized for use by any other firm or person.

