

SOLSTICE

3534 EAST CAPITOL ST NE, WASHINGTON, DC 20019

Retail Space For Lease



ABOUT THE PROPERTY:

This site features built in density with over 400 residents in the immediate area and a bustling residential community. There are 5 schools, 2 public parks and 2 recreation centers within a 6-block radius. Join other retailers such as Church's Chicken, Safeway, Papa Johns and McDonalds.

PROJECT SIZE:

137 Residential Apartments

RETAIL SPACE AVAILABLE FOR LEASE:

2,293 SF

[Click For Street View](#) 

Nick Alevrogiannis

D | 571.765.4419

C | 443.804.3933

nalevro@renaudconsulting.net

Andrew Poncher

D | 571.765.4430

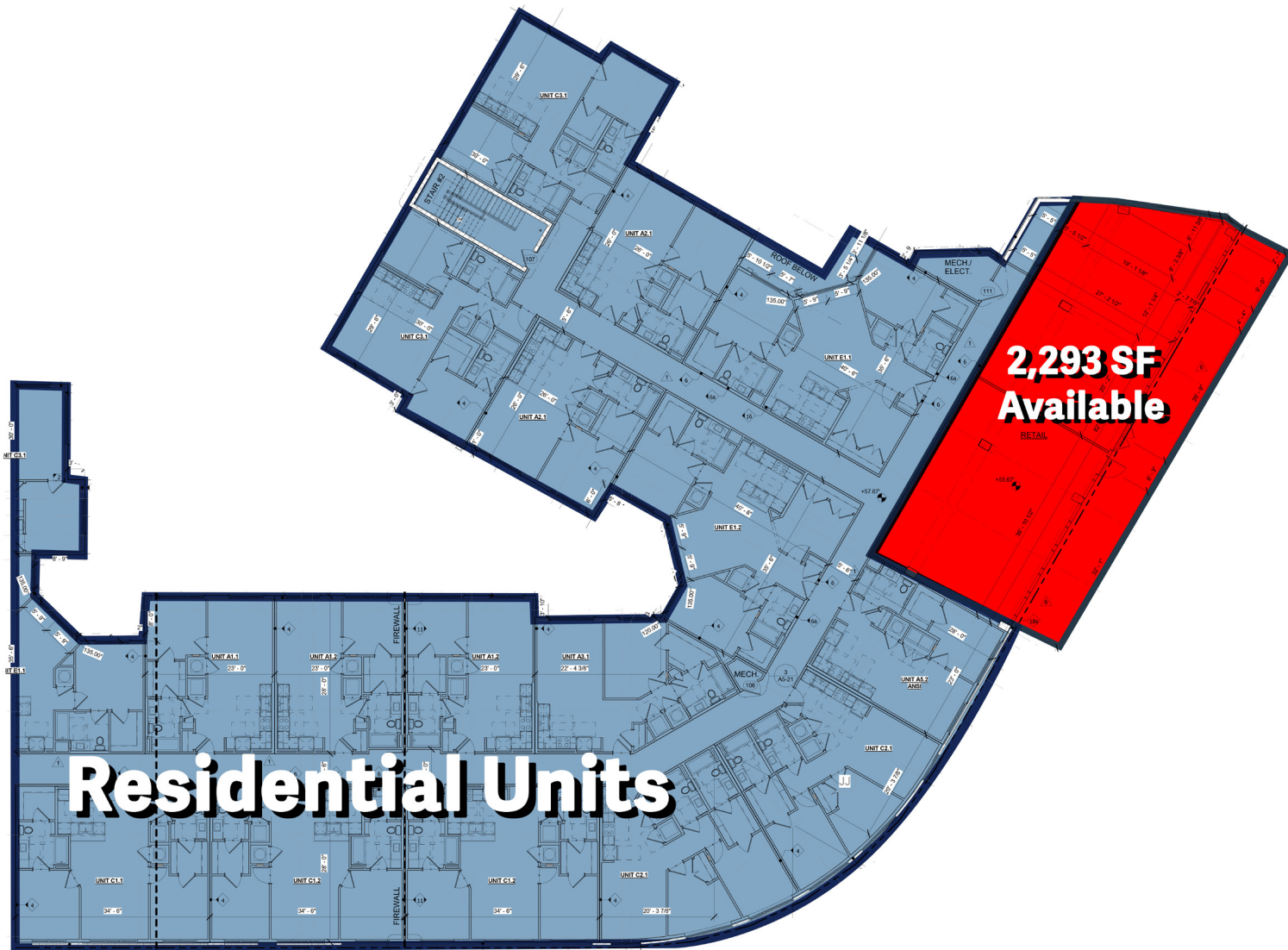
C | 312.399.5566

aponcher@renaudconsulting.net

Owed and operated by:
MRP | REALTY



Retail Floor Plan



Residential Units

2,293 SF Available

Nick Alevrogiannis

D | 571.765.4419

C | 443.804.3933

nalevro@renaudconsulting.net

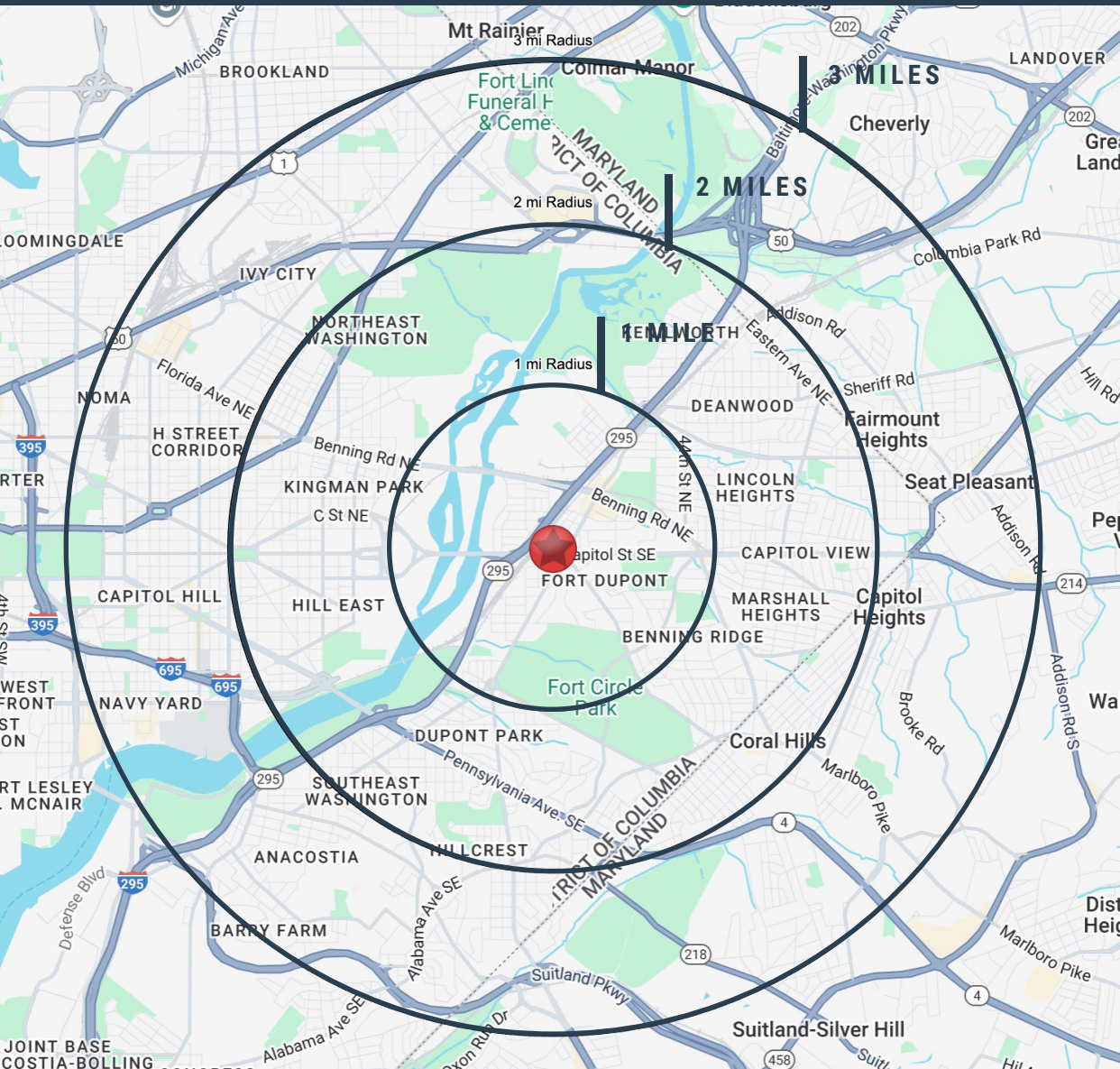
Andrew Poncher

D | 571.765.4430

C | 312.399.5566

aponcher@renaudconsulting.net

Location Map



	POPULATION	AVG. INCOME	DAYTIME EMP
1 mile	21,041	\$81,845	3,321
2 mile	114,202	\$116,093	19,986
3 mile	249,231	\$129,153	100,487

[CLICK FOR DEMOGRAPHIC REPORT](#)

TRAFFIC COUNTS

E CAPITOL ST	25,968 ADT
MINNESOTA AVE	19,866 ADT
AMES ST NE	1,815 ADT
35TH ST NE	1,869 ADT

Nick Alevrogiannis

D | 571.765.4419

C | 443.804.3933

nalevro@renaudconsulting.net

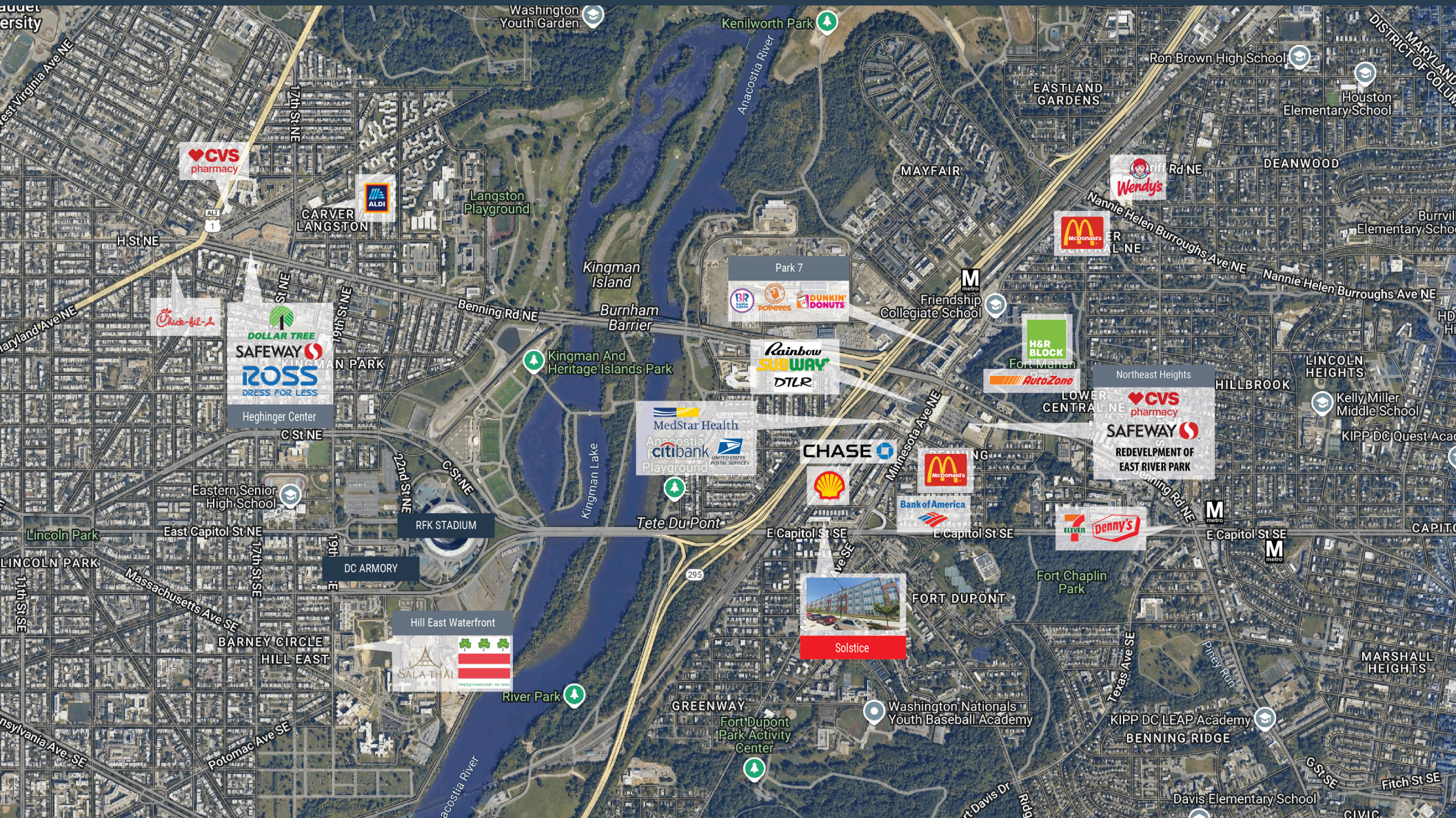
Andrew Poncher

D | 571.765.4430

C | 312.399.5566

aponcher@renaudconsulting.net

Area Retail Map



Nick Alevrogiannis

D | 571.765.4419

C | 443.804.3933

nalevro@renaudconsulting.net

Andrew Poncher

D | 571.765.4430

C | 312.399.5566

aponcher@renaudconsulting.net