

**2235 DAVE WARD DR | CONWAY, AR**



**DEMOGRAPHICS**

	1 Mile:	3 Mile:	5 Mile:
<b>Population:</b>	14,130	51,774	76,096
<b>Avg HH income:</b>	\$55,172	\$64,349	\$70,514
<b>Total HH:</b>	5,088	19,626	29,081

- 33,000 traffic count
- Over 700 apartments within walking distance
  - Easy access to I-40
- High growth area of Conway
  - Across the street from UCA
- Close to other dining and shopping

The Plaza at Centerstone is an upscale retail and lifestyle center like none other in Conway. With an outdoor courtyard and water feature welcoming you as you enter, your business will certainly benefit from this location. The new phases of The Plaza bring new opportunity to this thriving Centerstone community.



**AVAILABLE**

**Phase 4 ■ 16,800 SF**  
2 Levels | 12 Suites Available  
Level 1 - \$22-\$25/ft, NNN, \$20/ft T.I. Allowance  
Level 2 - \$19/ft, NNN, \$20/ft T.I. Allowance

\*\*suites can be combined\*\*

**Phase 1 ■ \$22/ft, NNN**  
Suite 101 ■ 2,205 SF  
Suite 105 ■ 2,800 SF  
**Phase 2 ■ \$22/ft, NNN**  
Suite 201 ■ 6,000 SF

**2235 DAVE WARD DR | CONWAY, AR**

**THE SHOPPES AT CENTERSTONE**

TENANT LIST

- SUITE 101 ■ DUNKIN'
- SUITE 103 ■ NEW HOPE PROSTHETICS
- SUITE 104 ■ MR. SMOKE

**THE PLAZZA AT CENTERSTONE**

TENANT LIST

PHASE 1

- SUITE 101 ■ **FOR LEASE**
- SUITE 102 ■ SISTER BLENDS
- SUITE 103 ■ CENTERSTONE DENTISTRY
- SUITE 105 ■ **FOR LEASE**
- SUITE 106 ■ JINWEI CHINESE EXPRESS
- SUITE 108 ■ HEARTLAND PHARMACY

PHASE 2

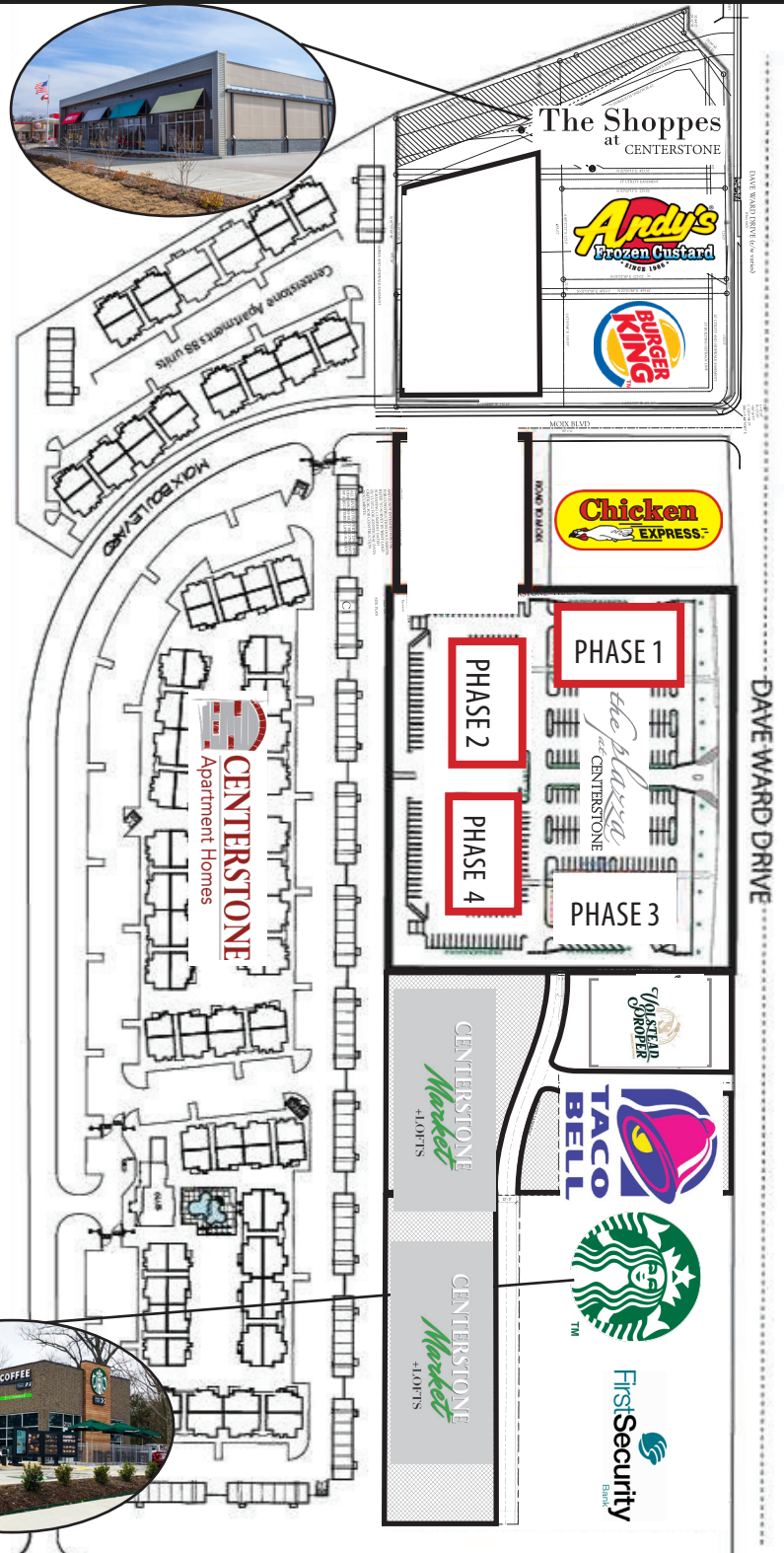
- SUITE 201 ■ **FOR LEASE**
- SUITE 205 ■ BIOTEST PLASMA CENTER

PHASE 3

- SUITE 301 & 302 ■ CHICKEN SALAD CHICK
- SUITE 303 ■ FIZZ FACIAL BAR
- SUITE 304 ■ EMPIRE
- SUITE 306 & 307 ■ CONWAY NAIL BAR
- SUITE 308 ■ HUNGRY HOWIE'S

PHASE 4

- SUITES 401-408 ■ **FOR LEASE**
- SUITES 421-424 ■ HAVEN SALON
- SUITES 425-428 ■ **FOR LEASE**



**2235 DAVE WARD DR | CONWAY, AR**



**Phase 1**



**Phase 2**



2235 DAVE WARD DR | CONWAY, AR

## Phase 3



**2235 DAVE WARD DR | CONWAY, AR**

## Phase 4



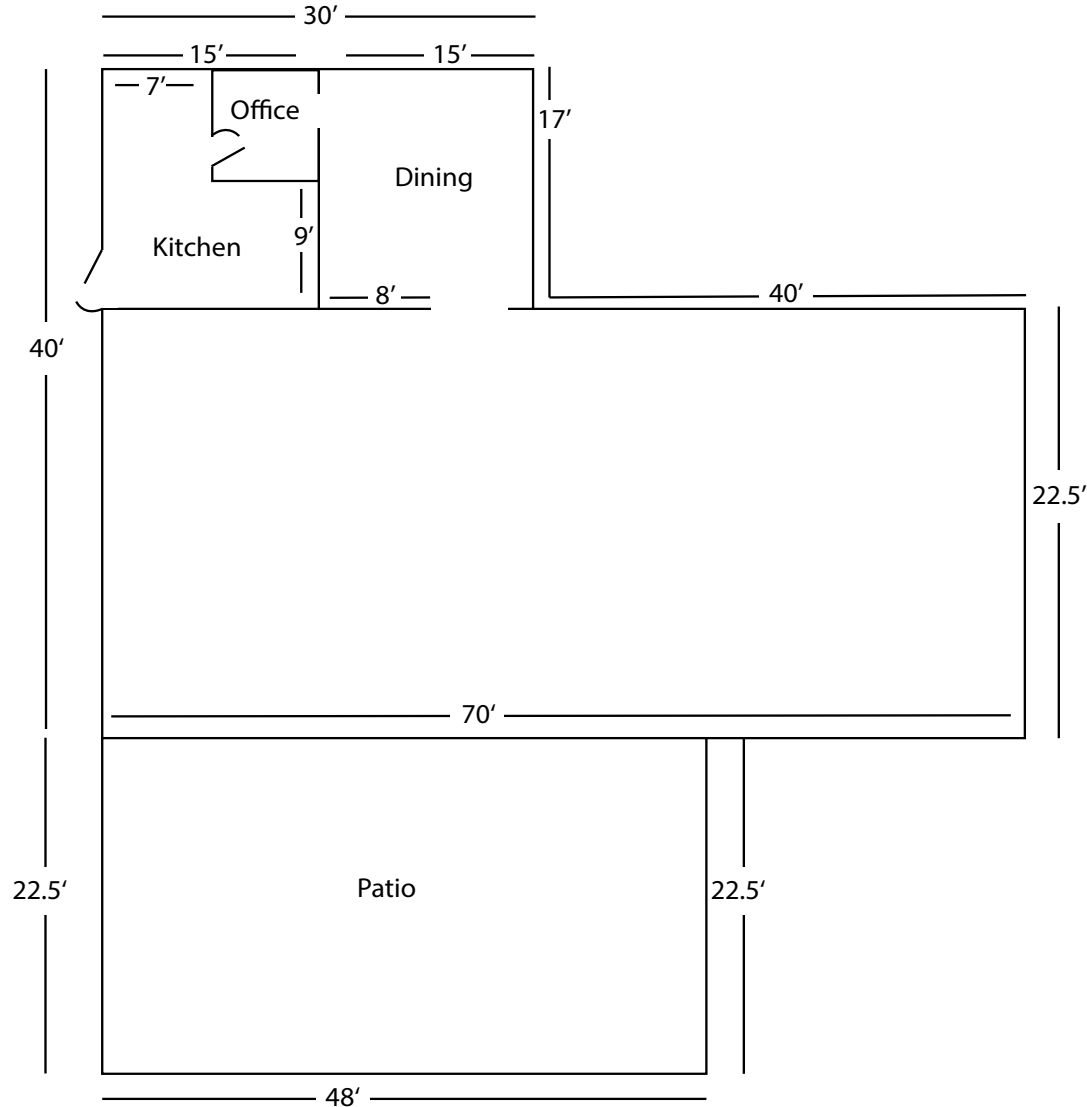
**2235 DAVE WARD DR | CONWAY, AR**

**PHASE 1 AVAILABLE**

**Suite 101 ■ 2,205 SF**

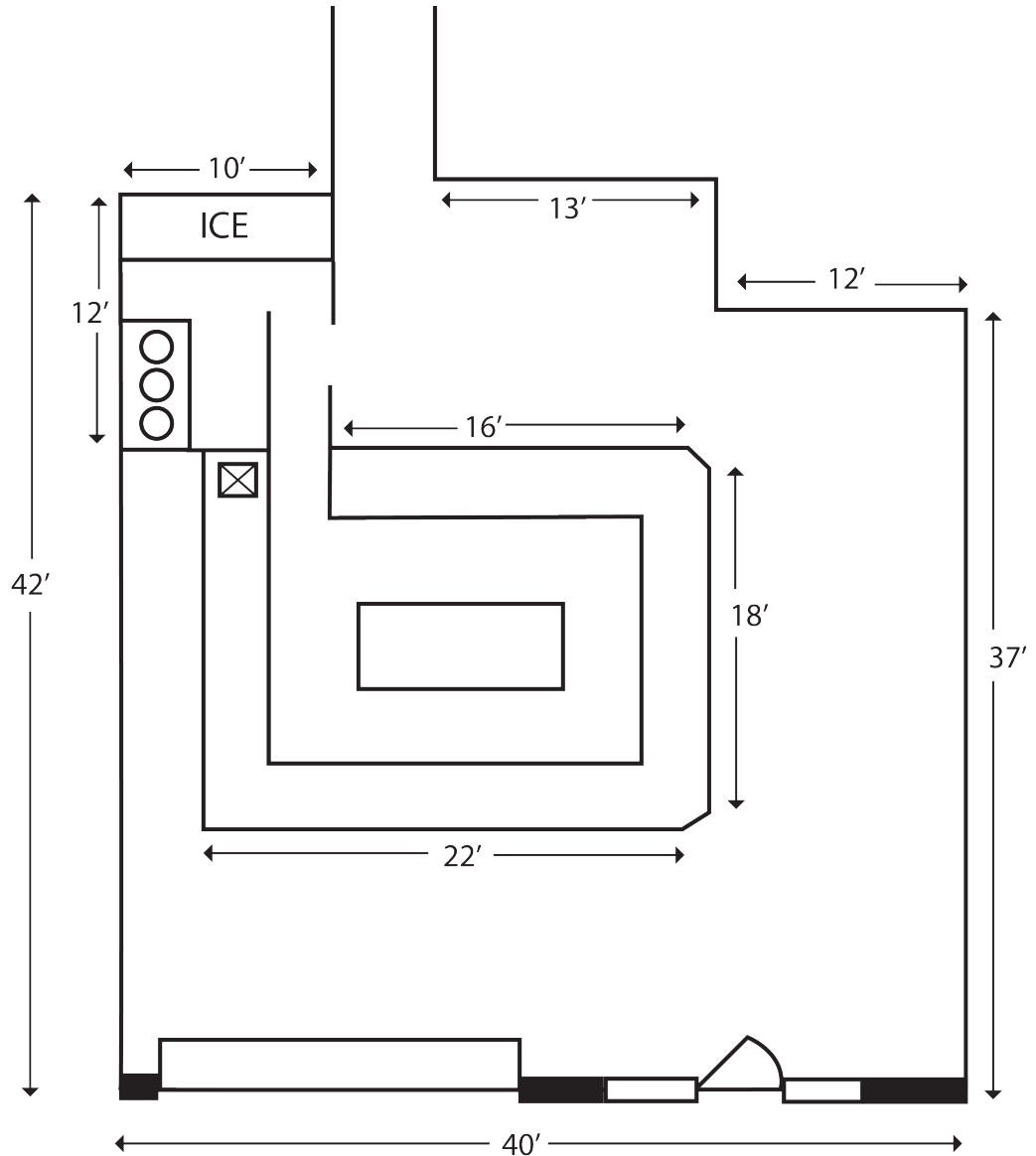
**Plus an additional  
1,000 SF of Patio Space**

**Kitchen Equipment  
Available For Purchase**



**2235 DAVE WARD DR | CONWAY, AR**

**PHASE 1 AVAILABLE**  
Suite 105 ■ 2,800 SF



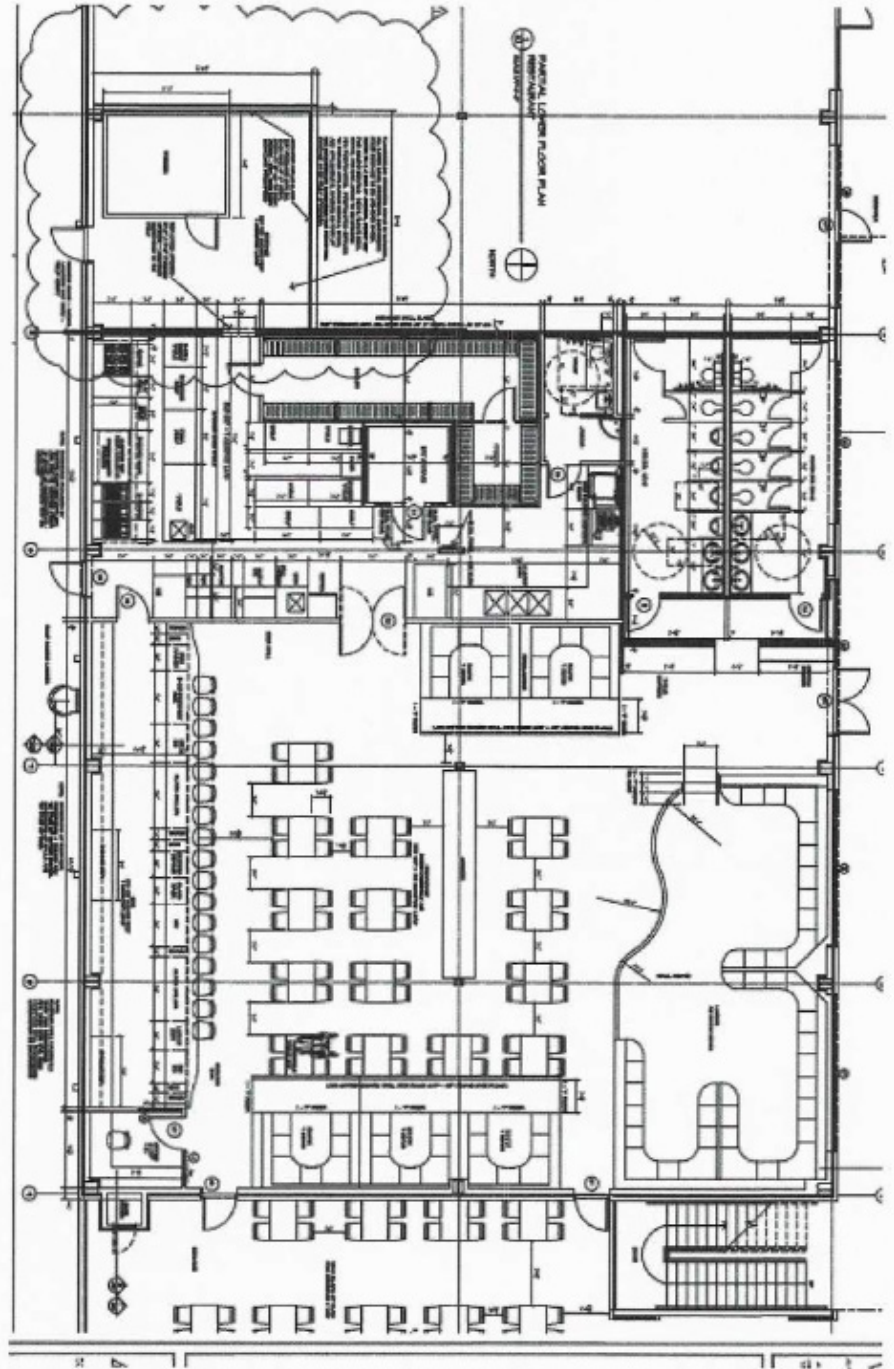
**2235 DAVE WARD DR | CONWAY, AR**

**PHASE 2 AVAILABLE**

**Suite 201 ■ 6,000 SF**

**Plus an additional  
1,000 SF of Patio Space**

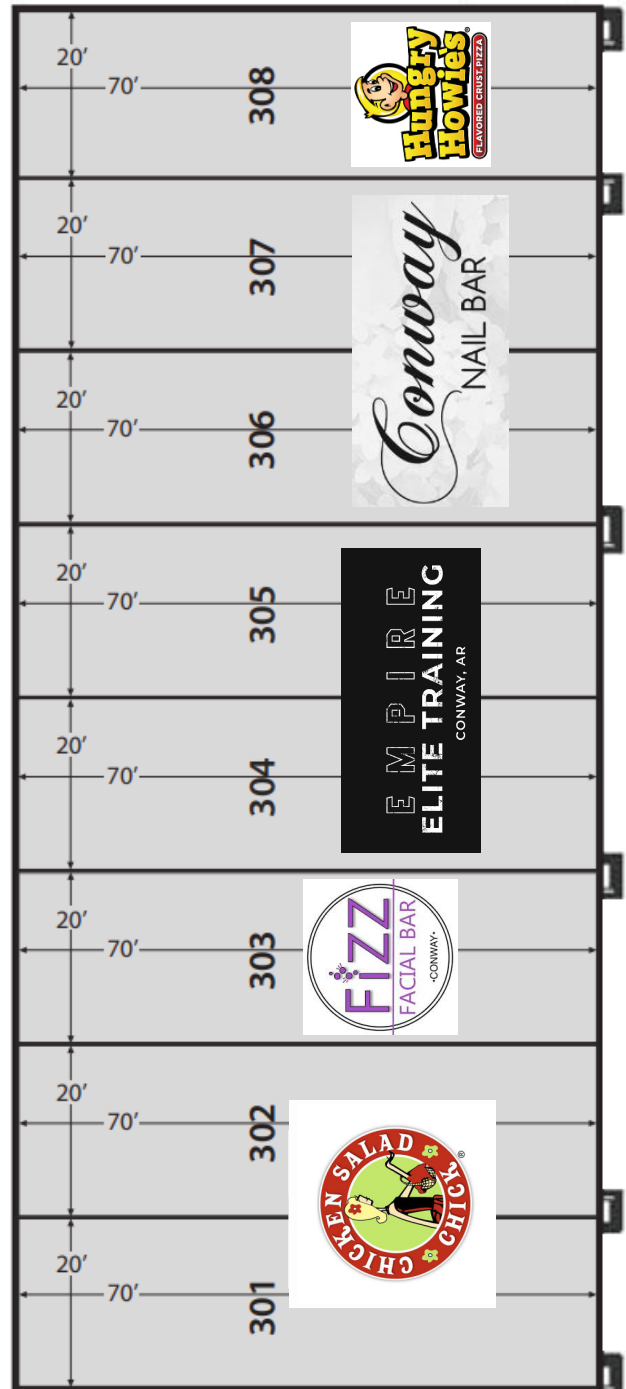
**Kitchen Equipment  
Available For Purchase**





**2235 DAVE WARD DR | CONWAY, AR**

**PHASE 3**  
**Fully Leased**



**2235 DAVE WARD DR | CONWAY, AR**

