

# 1547 Pacific Avenue

Santa Cruz | ±4,457 SF | FOR LEASE

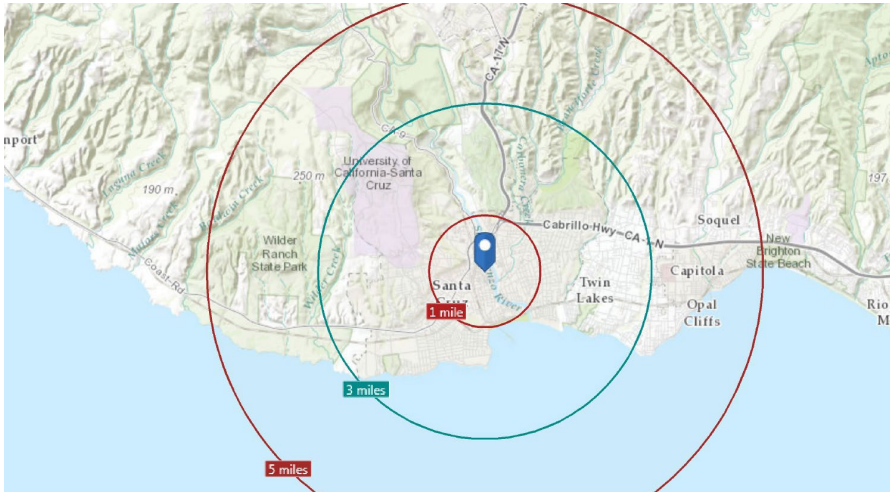


**SWENSON**

777 N 1st Street, 5th Floor  
San Jose, CA 95112  
408-287-0246  
[leasing@swenson.com](mailto:leasing@swenson.com)



# 1547 Pacific Avenue | Santa Cruz | FOR LEASE



## HIGHLIGHTS

- Mixed Use Building with 79 Residential Units
- 4,457 Ground Floor Retail Unit (Divisible) Fronting Pacific Avenue
- Great Opportunity for Food Uses!
- Heavy Walk By Traffic Along The Pacific Garden Mall
- Abundant Public Parking (Near Locust Street Garage)
- Contact [leasing@swenson.com](mailto:leasing@swenson.com) for pricing

## AVAILABILITY

**SUITE A** | ±1,866 SF  
± 342 SF (Mezz)  
Available now

**SUITE B** | ±2,856 SF  
Available now

## AREA

### POPULATION

1 mile | 25,785  
3 miles | 87,832  
5 miles | 124,050

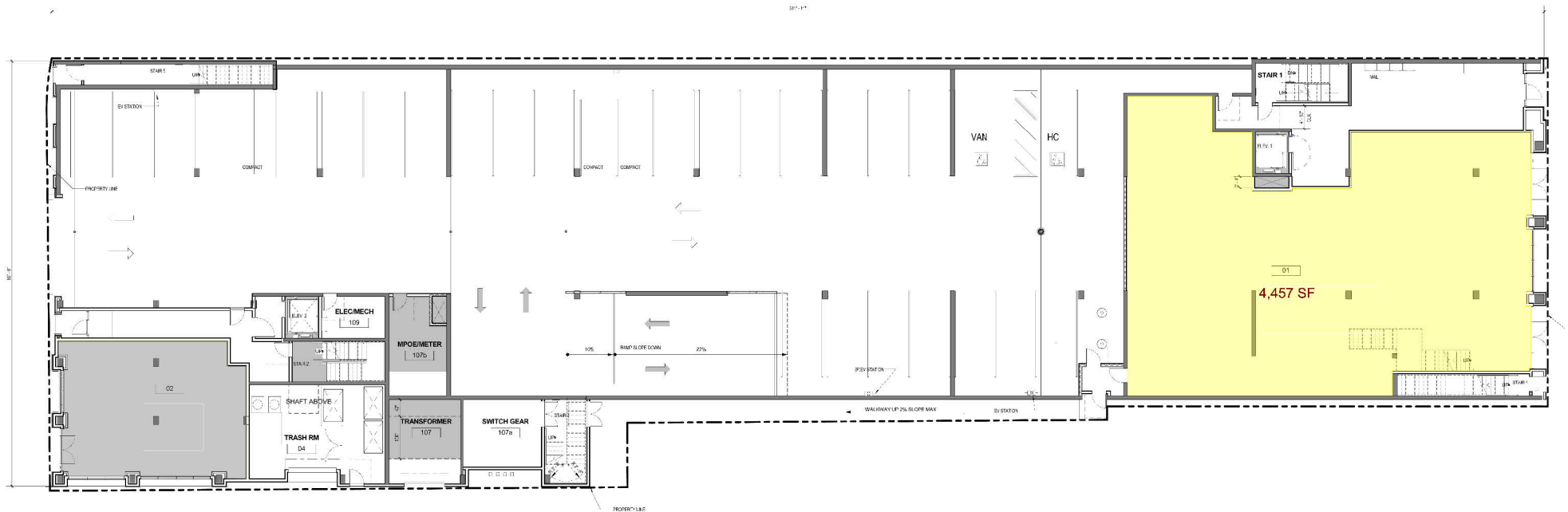
### HOUSEHOLD INCOME

1 mile | \$77,140  
3 miles | \$99,914  
5 miles | \$102,520

# 1547 Pacific Avenue | Santa Cruz | FOR LEASE

## FLOOR PLAN

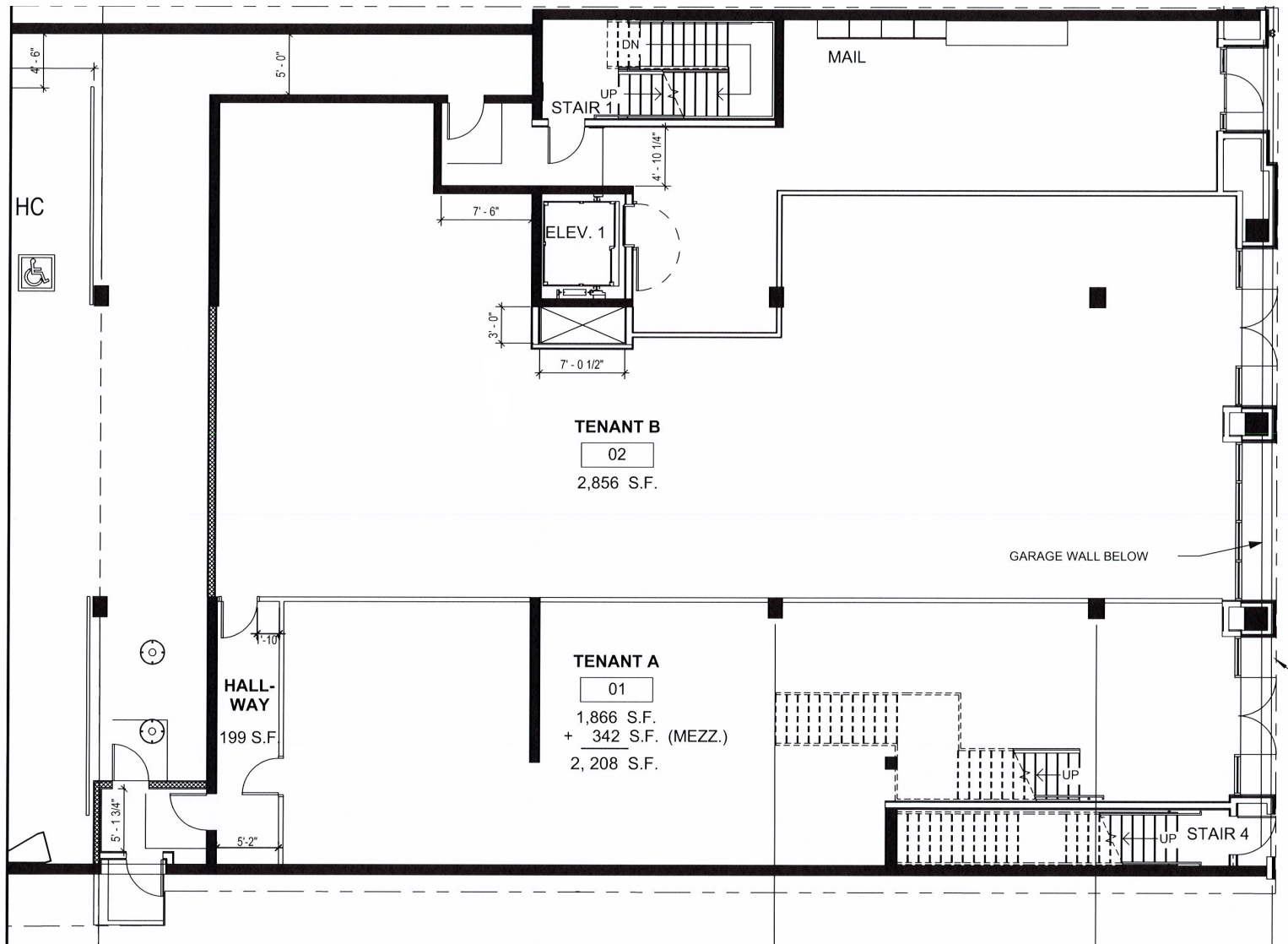
Commercial/Grade Level Floor Plan



# 1547 Pacific Avenue | Santa Cruz | FOR LEASE

## FLOOR PLAN

Space Cut/Potential Demise Option





# 1547 Pacific Avenue | Santa Cruz | FOR LEASE



## Pacific Avenue Arial Map

Contact [leasing@swenson.com](mailto:leasing@swenson.com) for more information.

**SWENSON**



# 1547 Pacific Avenue

Santa Cruz | ±4,457 SF | FOR LEASE

---

**SWENSON**

777 N 1st Street, 5th Floor  
San Jose, CA 95112  
408-287-0246  
[leasing@swenson.com](mailto:leasing@swenson.com)