



**F.C. Tucker  
Commercial**

**AVAILABLE**

**9411 McCaig Street**  
ELBERFELD, IN 47613



• **F - 9411 McCaig Street**

**Sale Price:** \$39,000  
**Lot Size:** 2 Acres +/-  
**Taxes:** \$140.24 (2023 Pay 2024)

• **G - Nobles Chapel Road**

**Sale Price:** \$114,900  
**Lot Size:** 11.65 Acres +/-  
**Taxes:** \$816.84 (2023 Pay 2024)

**Zoned C-3. Property is minutes from Warrick Industrial Park, Freudenberg's gas station and I-69 on ramps. Lot G is impacted by a power line easement on the west portion of the lot. The easement is 50' from centerline.**

**For More Information, Contact:**

**Ken Newcomb, President / Broker**  
kennewcomb@fctuckercommercial.com

812.204.4004

**Jeremy Morris, J.D., Broker**  
jeremymorris@fctuckercommercial.com

812.463.2199



7820 Eagle Crest Blvd. Suite 200  
Evansville, IN • 47715  
812-473-6677 • Fax: 812-473-6684



**FCTuckerCommercial.com**

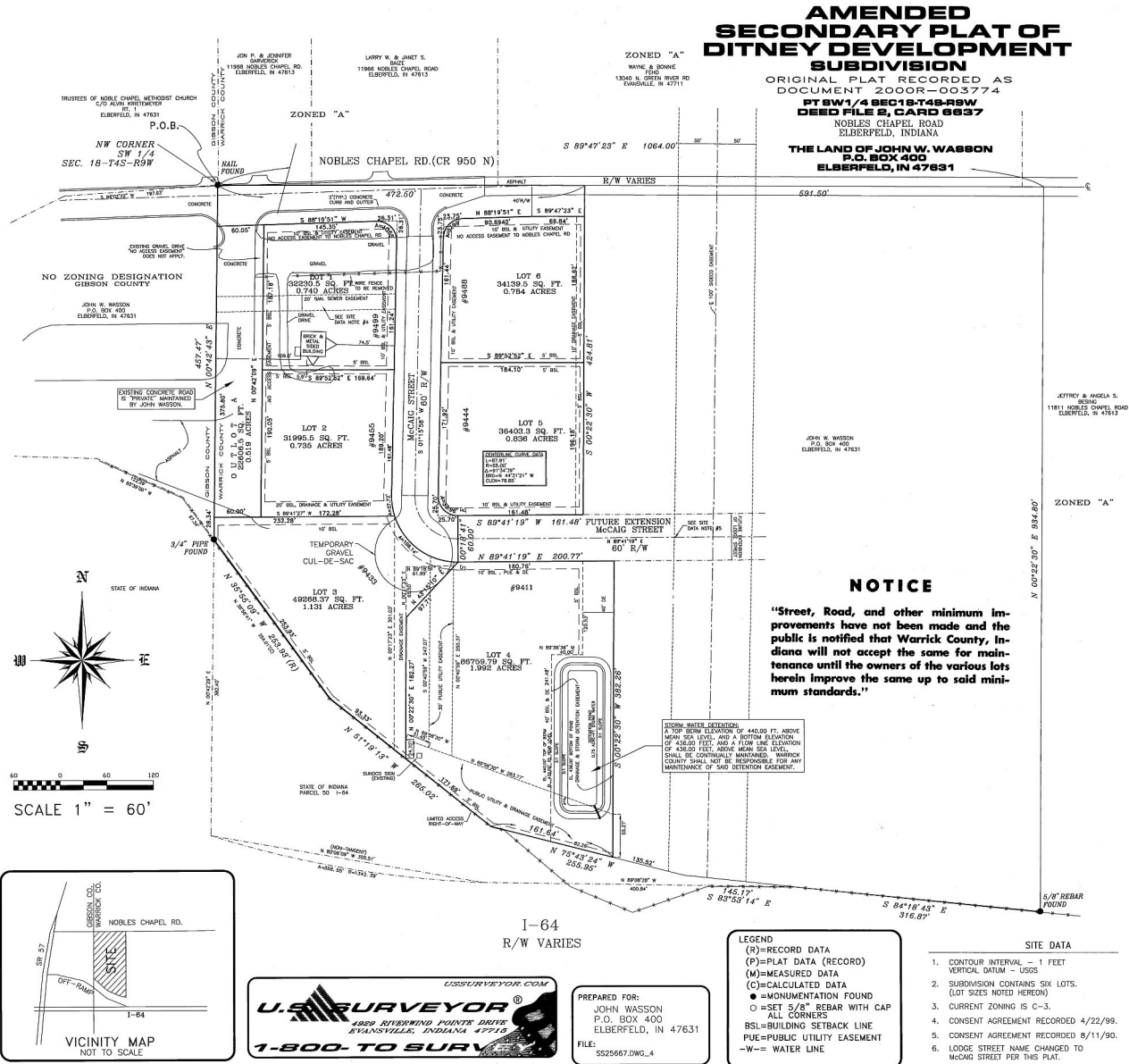
The information contained herein was obtained from sources we consider reliable. We cannot be responsible, however, for errors, omissions, prior sale, and withdrawal from the market or change in price.



**F.C. Tucker  
Commercial**

**AVAILABLE**

**9411 McCaig Street  
ELBERFELD, IN 47613**



**For More Information, Contact:**

**Ken Newcomb, President / Broker**  
kennewcomb@fctuckercommercial.com

**812.204.4004**

**Jeremy Morris, J.D., Broker**  
jeremymorris@fctuckercommercial.com

**812.463.2199**



7820 Eagle Crest Blvd. Suite 200  
Evansville, IN • 47715  
812-473-6677 • Fax: 812-473-6684



**FCTuckerCommercial.com**

The information contained herein was obtained from sources we consider reliable. We cannot be responsible, however, for errors, omissions, prior sale, and withdrawal from the market or change in price.