



163 E 36th St

163 E 36th St, New York, NY 10016



Daniel Scharfman

APTSNY.com

111 N Central Ave, Suite 400, Hartsdale, NY 10530

retail@aptsny.com

(917) 444-9777



163 E 36th St

\$157.00 /SF/YR

Excellent opportunity to lease a retail space in the heart of Midtown East. Located mid-block between Third and Lexington Avenues, this approximately 325-square-foot storefront features a modern glass storefront, an efficient open layout, a private restroom, and excellent street presence.

Previously occupied by a pharmacy, the space is well-suited for a variety of retail, medical, wellness, office, showroom, and neighborhood service uses. Surrounded by a strong mix of residential buildings, office towers, hotels, and established retailers, the location offers a built-in customer base and convenient access to Grand Central Terminal and multiple subway lines. Asking rent \$4,250.

With an efficient layout and clean interior, the space is ready for a variety of business concepts with minimal build-out...



Rental Rate: \$157.00 /SF/YR

Property Type: Multifamily

Property Subtype: Apartment

Apartment Style: Mid Rise

Year Built: 1910

Walk Score ®: 100 (Exceptionally friendly)

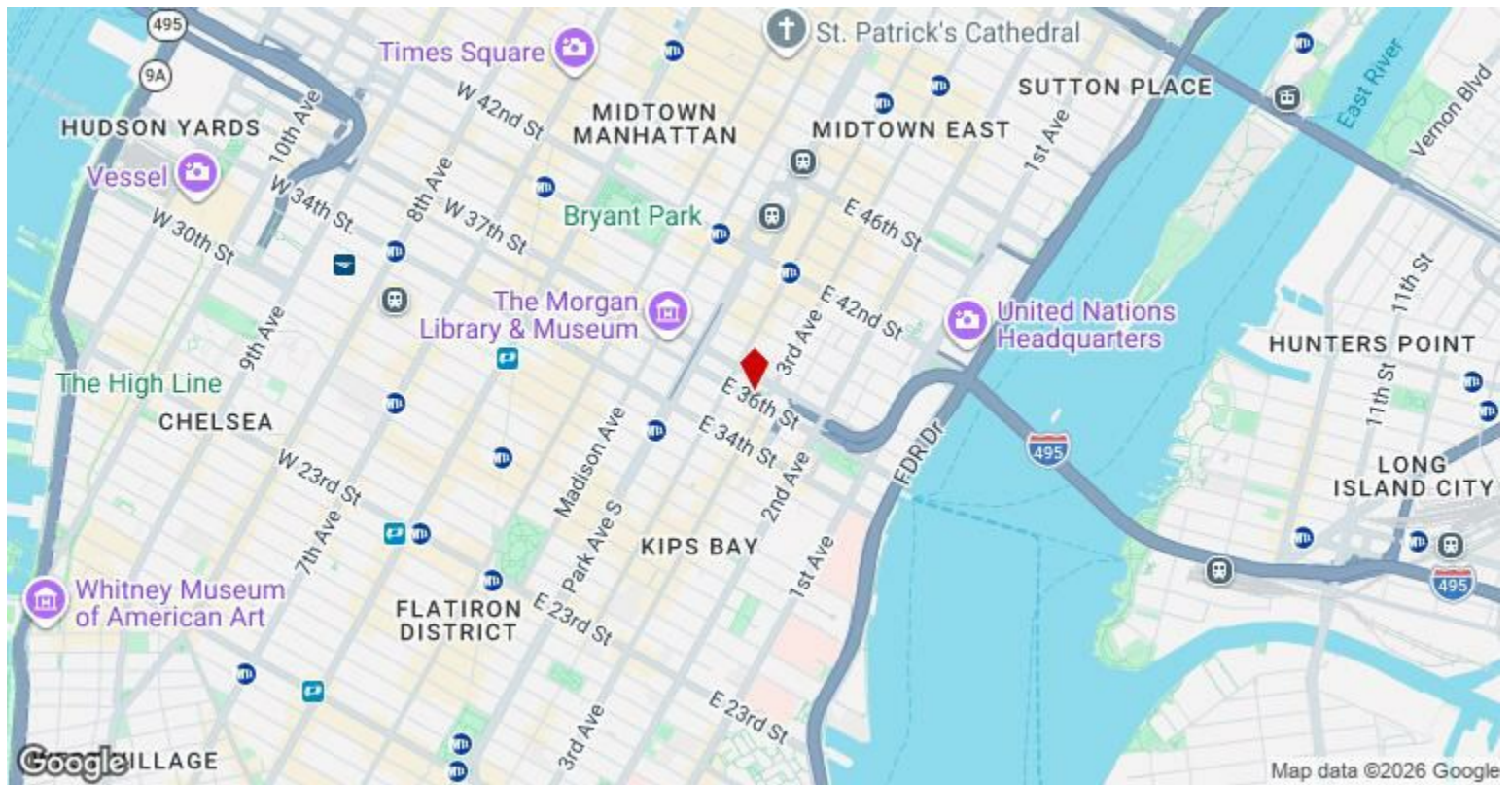
Transit Score ®: 100 (Exceptionally friendly)

Rental Rate Mo: \$13.08 /SF/MO

1st Floor

Space Available	325 SF
Rental Rate	\$157.00 /SF/YR
Date Available	July 02, 2026
Service Type	TBD
Space Type	Relet
Space Use	Retail
Lease Term	Negotiable

Excellent opportunity to lease a retail space in the heart of Midtown East. Located mid-block between Third and Lexington Avenues, this approximately 325-square-foot storefront features a modern glass storefront, an efficient open layout, a private restroom, and excellent street presence. Previously occupied by a pharmacy, the space is well-suited for a variety of retail, medical, wellness, office, showroom, and neighborhood service uses. Surrounded by a strong mix of residential buildings, office towers, hotels, and established retailers, the location offers a built-in customer base and convenient access to Grand Central Terminal and multiple subway lines. Asking rent \$4,250. With an efficient layout and clean interior, the space is ready for a variety of business concepts with minimal build-out.



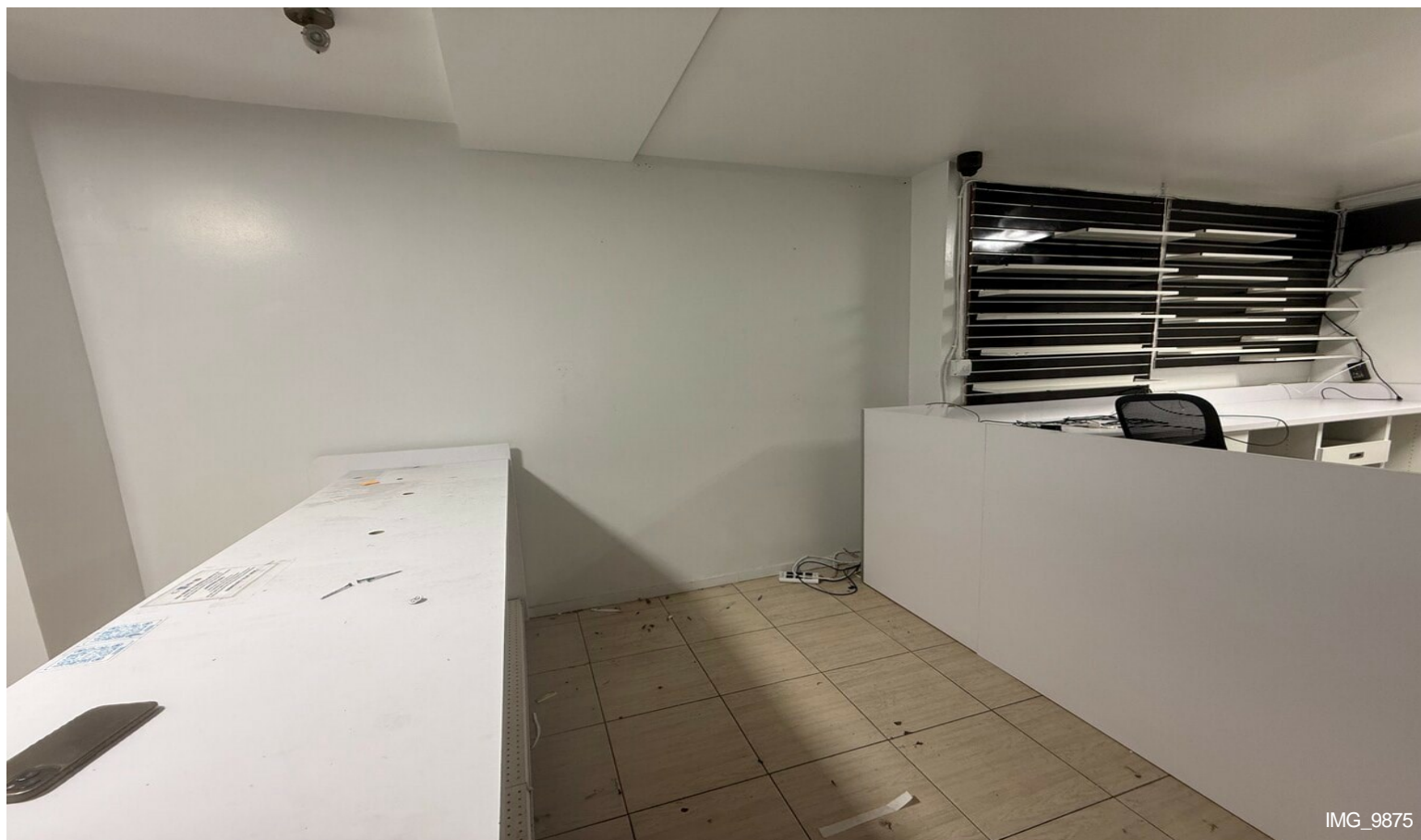
163 E 36th St, New York, NY 10016

Excellent opportunity to lease a retail space in the heart of Midtown East. Located mid-block between Third and Lexington Avenues, this approximately 325-square-foot storefront features a modern glass storefront, an efficient open layout, a private restroom, and excellent street presence.

Previously occupied by a pharmacy, the space is well-suited for a variety of retail, medical, wellness, office, showroom, and neighborhood service uses. Surrounded by a strong mix of residential buildings, office towers, hotels, and established retailers, the location offers a built-in customer base and convenient access to Grand Central Terminal and multiple subway lines. Asking rent \$4,250.

With an efficient layout and clean interior, the space is ready for a variety of business concepts with minimal build-out.

Property Photos



IMG_9875



IMG_9874