

ANTIOCH PLAZA

6700 ANTIOCH ROAD, MERRIAM, KANSAS



NEWMARK
ZIMMER

CLASS A OFFICE SPACE FOR LEASE

PROPERTY LOCATION



**ANTIOCH
PLAZA**

W 67th St

W 67th St

TOYOTA

LEXUS

NISSAN

Jeep

HYUNDAI

CARMAX

NATIONS

AMR

Peppertree
Apartments

Shawnee Mission Pkwy

Antioch Rd

Antioch Rd

Antioch Rd

Antioch Rd

W 71st St

W 71st St

MILBURN
COUNTRY CLUB

SMSD Center
for Academic
Achievement

PROPERTY DETAILS

4% CO-OP
FEE FOR
QUALIFIED
DEALS

AVAILABILITIES:

- ▶ Suite 150: 1,977 SF
- ▶ Suite 240: 3,678 SF
- ▶ Suite 300: 23,297 SF
- ▶ Suite 420: 10,389 SF
- ▶ Suite 460: 2,667 SF

LOCATION:

- ▶ Premier North Johnson County location
- ▶ Located just off I-35 at the 67th Street exit
- ▶ Central location provides easy access to South Johnson County, Downtown Kansas City and the Country Club Plaza

THE BUILDING:

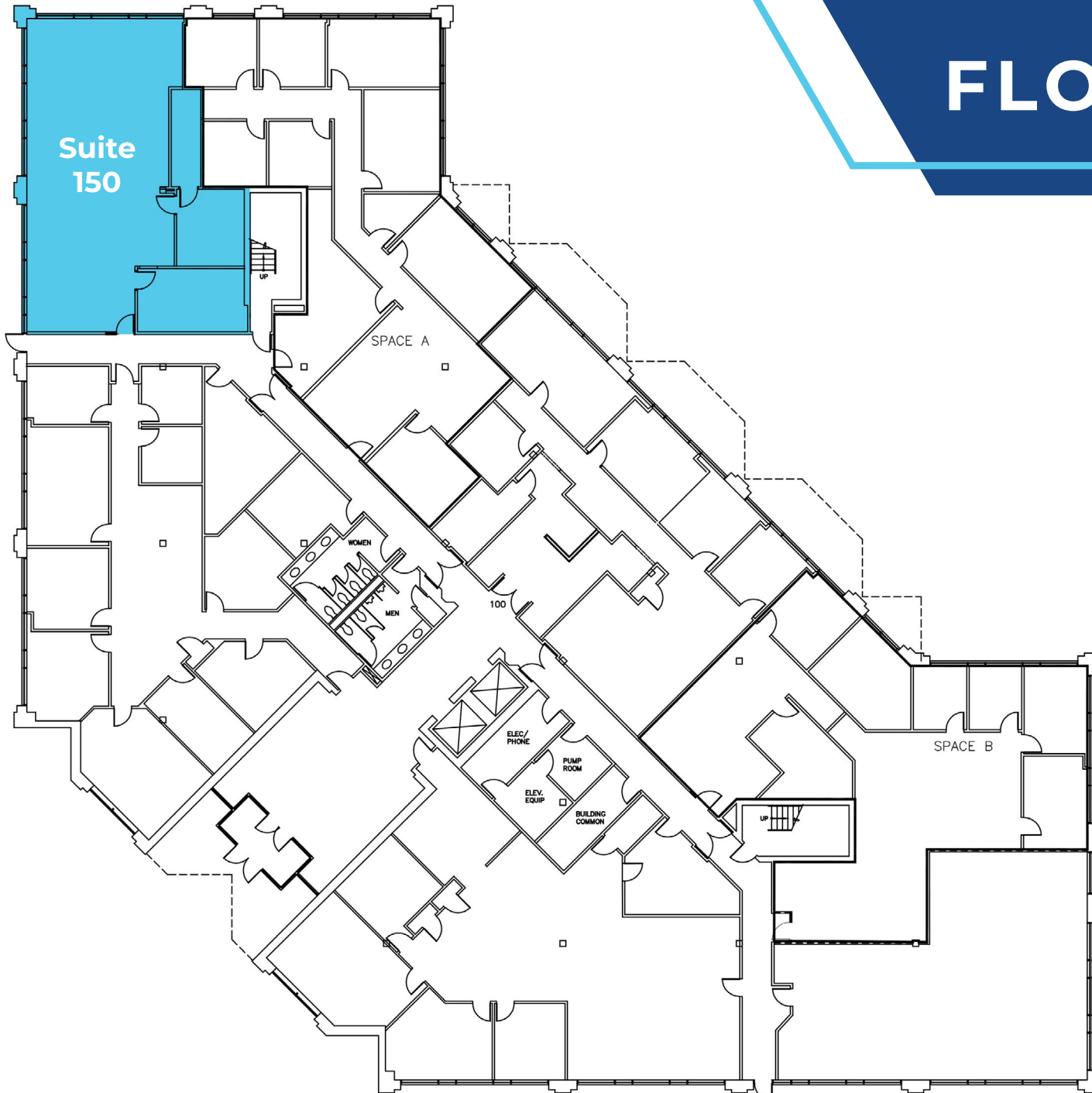
- ▶ Newly remodeled common areas and restrooms
- ▶ Ample parking
- ▶ Move-in ready suites available
- ▶ Attractive landscaping with outdoor seating
- ▶ Card key access system

LEASE RATE:

- ▶ \$20.50/sf



FIRST FLOOR PLAN



AVAILABILITIES:

- ▶ Suite 150: 1,977 SF

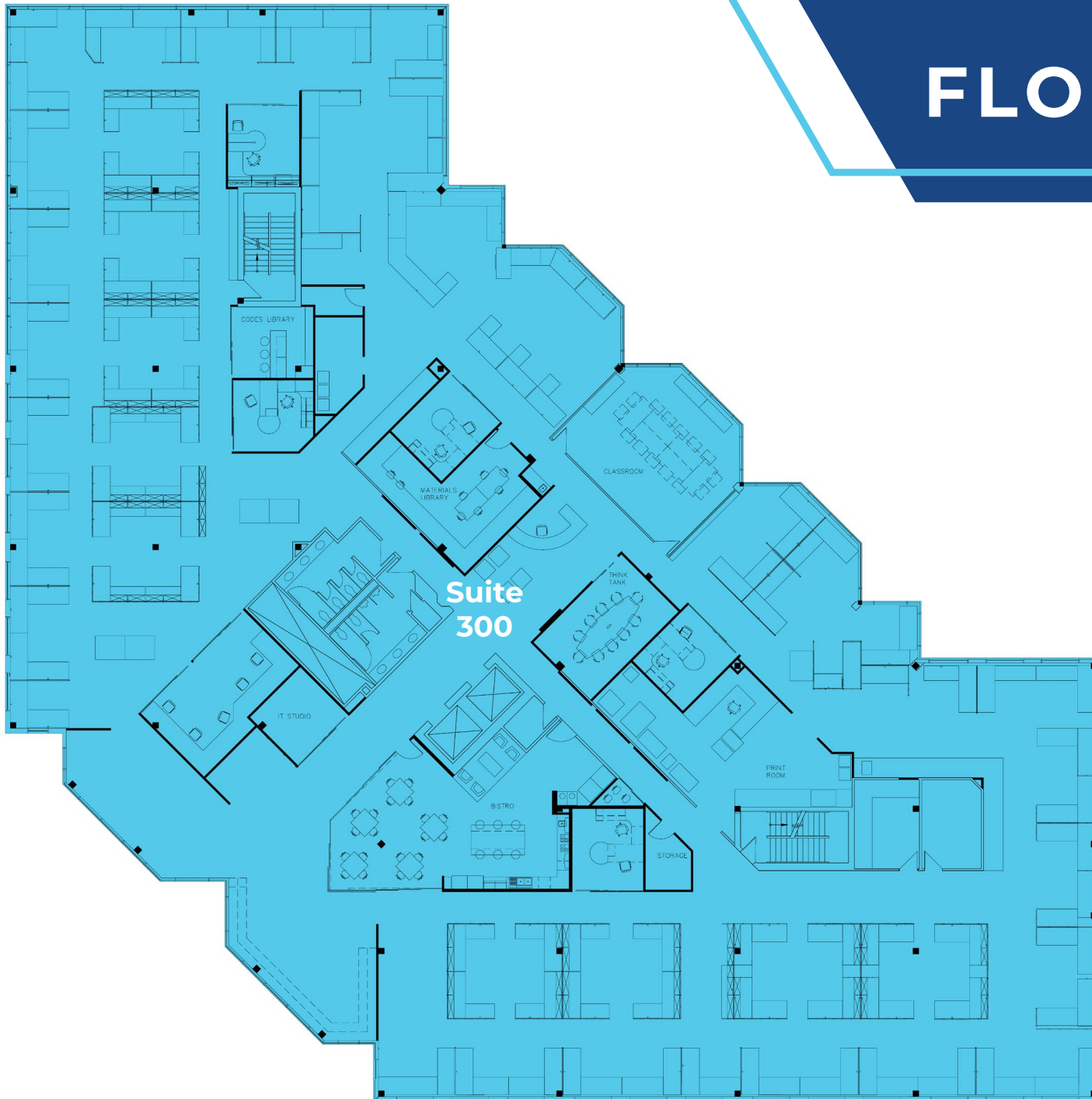
SECOND FLOOR PLAN



AVAILABILITIES:

- ▶ Suite 240: 3,678 SF

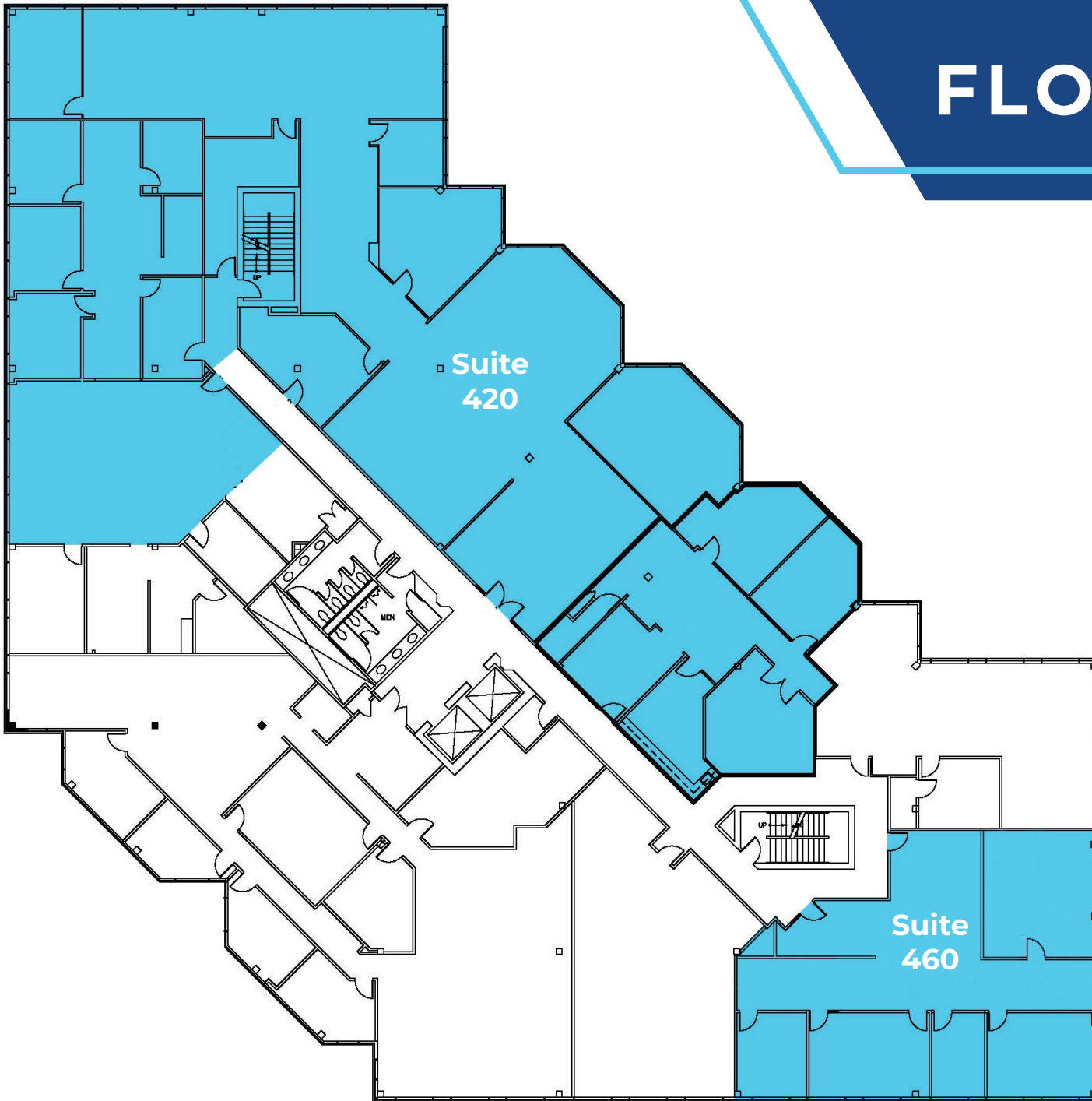
THIRD FLOOR PLAN



AVAILABILITIES:

- ▶ Suite 300: 23,297 SF

FOURTH FLOOR PLAN



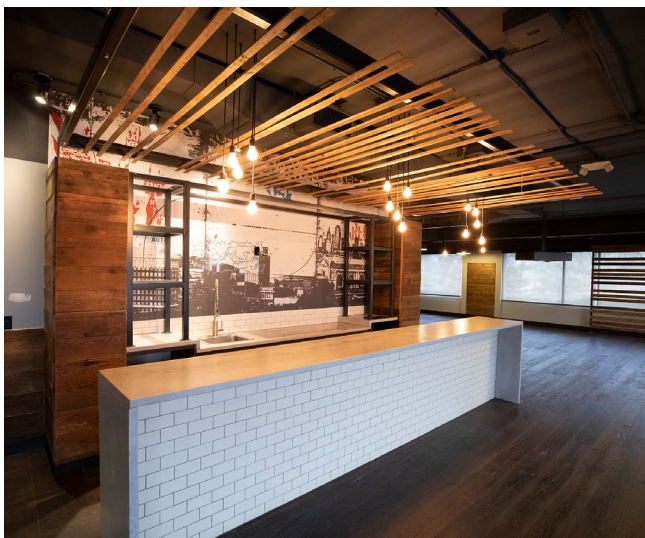
AVAILABILITIES:

- ▶ Suite 420: 10,389 SF
- ▶ Suite 460: 2,667 SF

PROPERTY PHOTOS



VIRTUAL
TOUR



PROPERTY PHOTOS



PROPERTY PHOTOS



PROPERTY PHOTOS



ANTIOCH PLAZA

6700 ANTIOCH ROAD, MERRIAM, KANSAS

NEWMARK
ZIMMER

FOR MORE INFORMATION

MICHAEL L. VANBUSKIRK

SIOR, CCIM, CRE

Vice Chairman, Principal

t 816-512-1010

mvanbuskirk@nzimmer.com

TREY W. DEROUSSE

CCIM

Director

t 816-268-4236

tderousse@nzimmer.com