

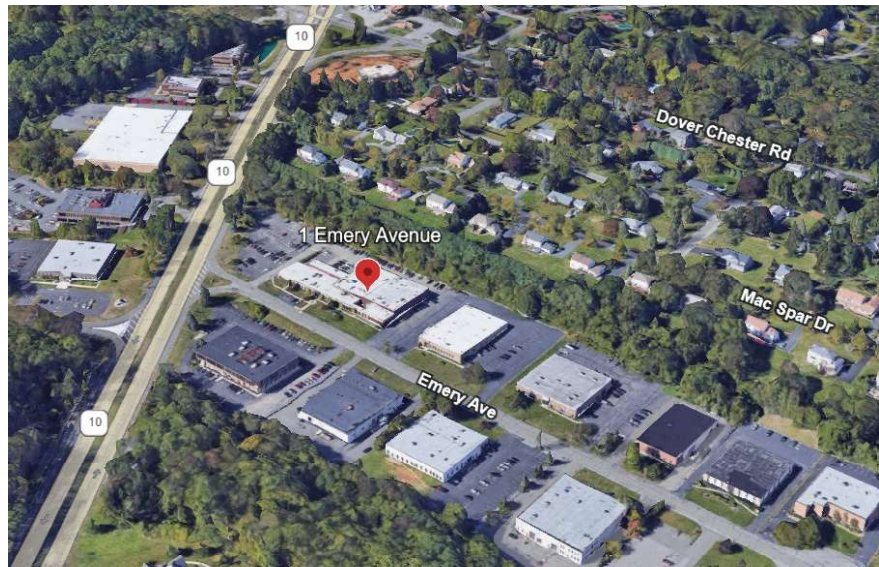
1 Emery Avenue Randolph, NJ



FOR LEASE

PROPERTY SPECS:

Property Type:	Office/Flex
Office:	Unit 2A: 4,119 SF
Asking Price:	\$15.50 NNN
Tax/CAM:	+/- \$4.00 PSF
Sprinkler:	Wet
Utilities:	Separately Metered
Zoning:	I-1 (permitted uses include: office, manufacturing, lab warehousing and commercial recreation)
Availability:	30 – 60 days



Comments: Located directly off Route 10 with approximately 200 feet of highway frontage and monument signage.

For more information, please contact:

Brian Wilson, SIOR
bwilson@resource-realty.com
C: 973-219-1331

Tom Consiglio, SIOR
tconsiglio@resource-realty.com
C: 551-427-5003

O: 973-299-0900 • www.resource-realty.com

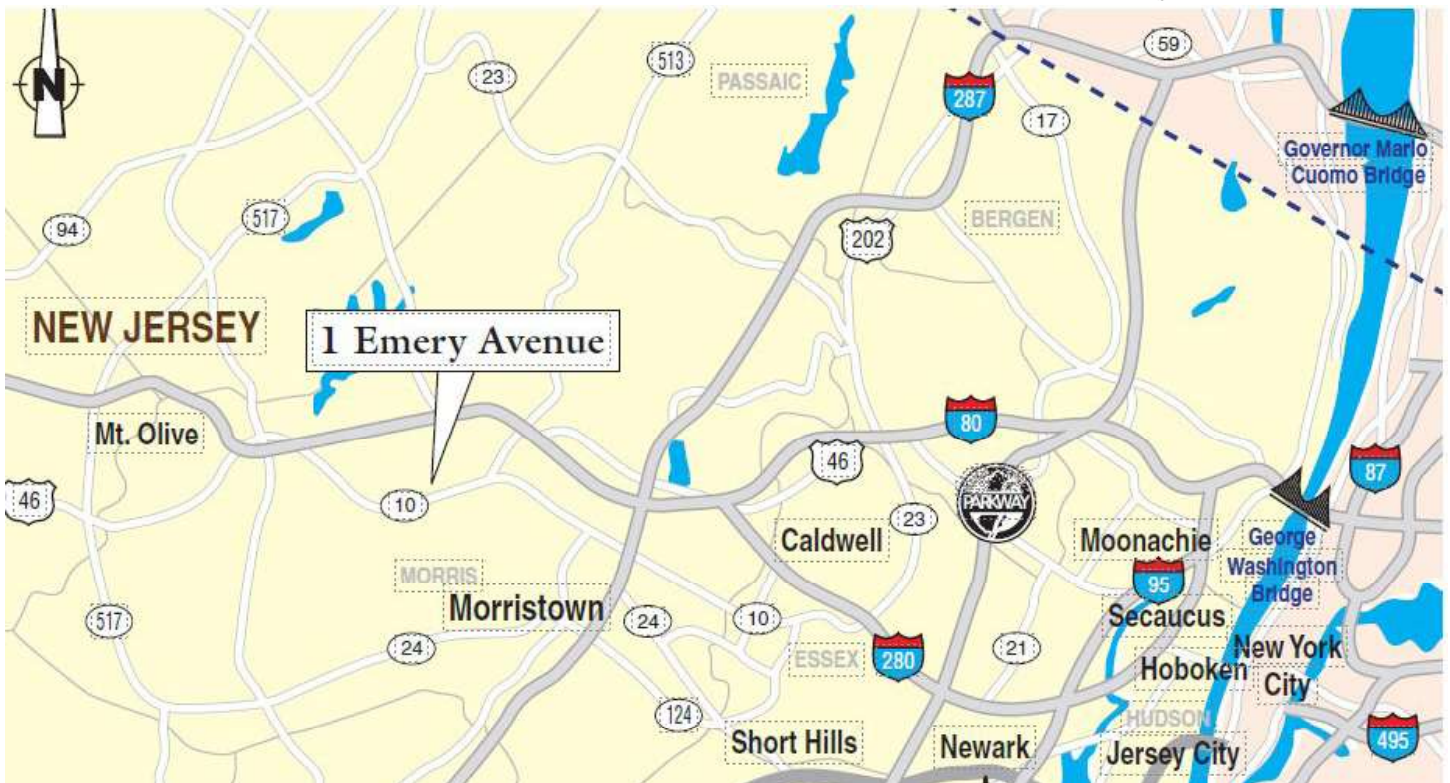
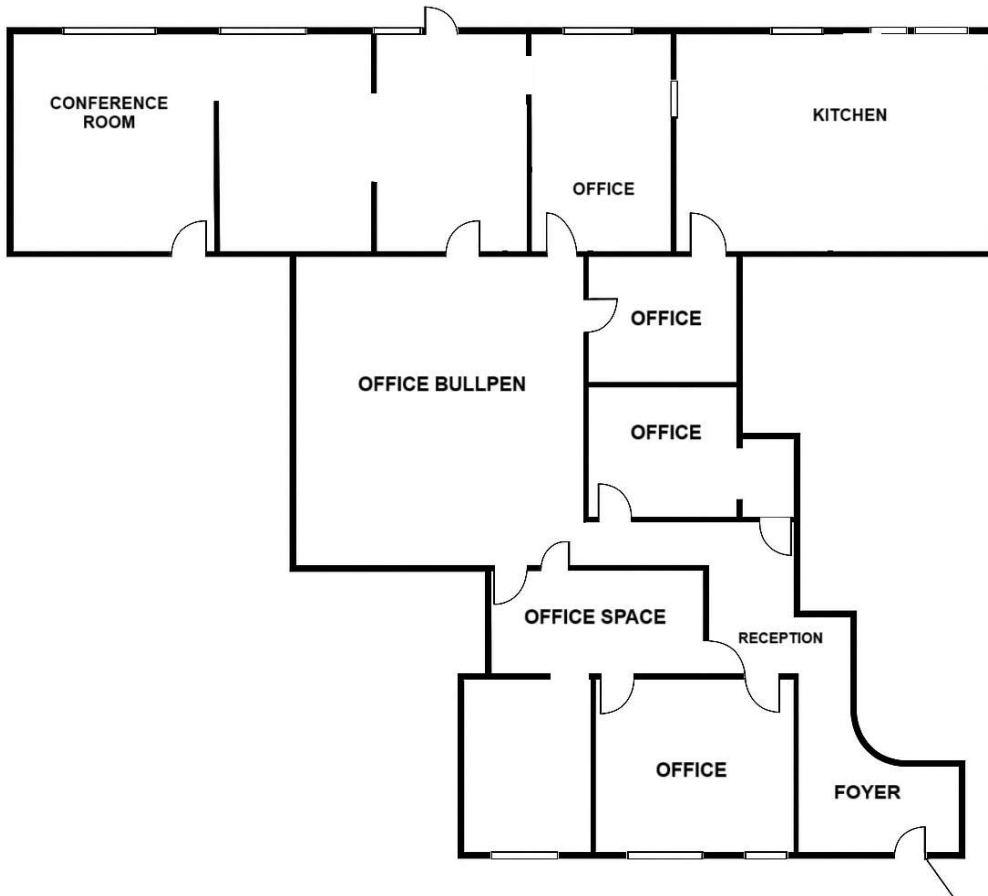
Exclusive Leasing Agent:



Resource Realty
Corporate Real Estate Services

35 Years of Dedication & Expertise

Unit 2A: 4,119



Exclusive Leasing Agent:



35 Years of Dedication & Expertise

973-299-0900

www.resource-realty.com

All information furnished is from sources deemed reliable. No representation is made as to the accuracy thereof and it is submitted subject to error, omission, change of price, prior sale or lease and withdrawal without notice. Any commission due cooperating brokers is subject to all of the terms and conditions upon which we and our clients have agreed.