

# 1100 E. BRIDGER AVENUE

Las Vegas, NV 89101

AVAILABLE  
For Lease

Introductory Rate \$1.25 PSF FS



5960 South Jones Boulevard  
Las Vegas, Nevada 89118  
T 702.388.1800  
F 702.388.1010  
[www.mdlgroup.com](http://www.mdlgroup.com)

**Buck Hujabre**  
Senior Vice President  
Lic#: BS.1002453.LLC  
225.284.0985  
[bhujabre@mdlgroup.com](mailto:bhujabre@mdlgroup.com)

**Brian Singleton**  
Senior Associate  
Lic#: S.0194212  
702.569.2700  
[bsingleton@mdlgroup.com](mailto:bsingleton@mdlgroup.com)





## Leasing Details



**\$1.25 PSF FS**

Introductory Lease Rate



**±130 - ±21,859 SF**

Square Footage



**Downtown**

Submarket

## Demographics

Population	1 mile	3 miles	5 miles
2023 Population	23,397	191,012	534,530
Average Household Income	1 mile	3 miles	5 miles
2023 Average Household Income	\$52,116	\$58,234	\$60,012

## Property Highlights

- Entire floor available (2nd and 3rd floor) each 7,228 SF – Maximum contiguous space available 21,859 SF (entire building)
- Ample parking with over 40 assigned spaces still available – Two parking lots (2.42/1,000)
- Tenant improvements available, property owner is a licensed contractor and developer
- Join tenants Protective Force International Security and KLA Capital
- Secure building with on-site security, key fob entry, and the largest security force in Las Vegas as a co-tenant
- PR (Professional Office) Zoning, City of Las Vegas
- Close proximity to Clark County Justice Court, Federal Courthouse, US District Court, Supreme Court of Nevada, and US Bankruptcy Court
- Easy access to the I-15 and I-11 Freeways



1100 E. BRIDGER AVENUE  
Las Vegas, NV 89101

For Lease

● Brewery Row ● Art District ● Nothern Strip Gateway ● Fremont East Entertainment ● Downtown Resorts & Casinos ● Civic & Business Center



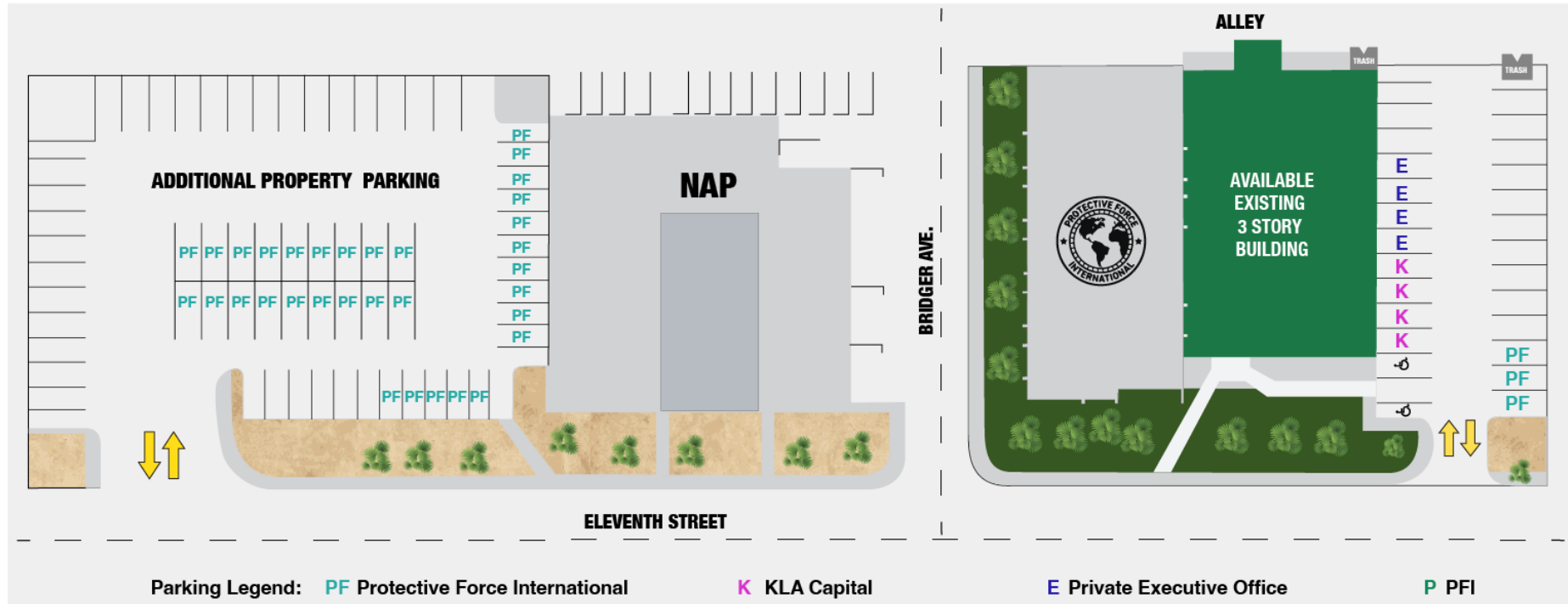


1100 E. BRIDGER AVENUE  
Las Vegas, NV 89101

For Lease







Drawings and plans are not to scale. Any measurements are approximate and are for illustrative purposes only. There is no guarantee, warranty or representation as to the accuracy or completeness of any plans or designs.

Suite #	Tenant	SF	Floor	Use/Lease Rate	Parking
100 & 200	Protective Force International	14,071	1st & 2nd	Private Security Company	36 (PF)
101	KLA Capital	7,403	1st	Construction & Developer	4 (K)
101	Executive Suites	130 - 240	1st	\$520 - \$960/Mo. FS	1 per suite (E)
201	Vacant	7,228	2nd	Intro Rate \$1.25 PSF FS, then \$2.15 PSF FS	18
300	Vacant	7,228	3rd	Intro Rate \$1.25 PSF FS, then \$2.15 PSF FS	18

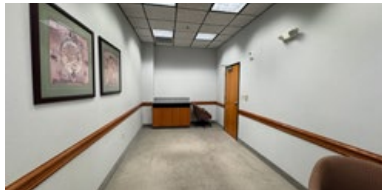
## Executive Office 2

- + **Total SF:** ±240
- + **Monthly Rent:** \$960/M FS



## Executive Office 3

- + **Total SF:** ±190
- + **Monthly Rent:** \$760/M FS



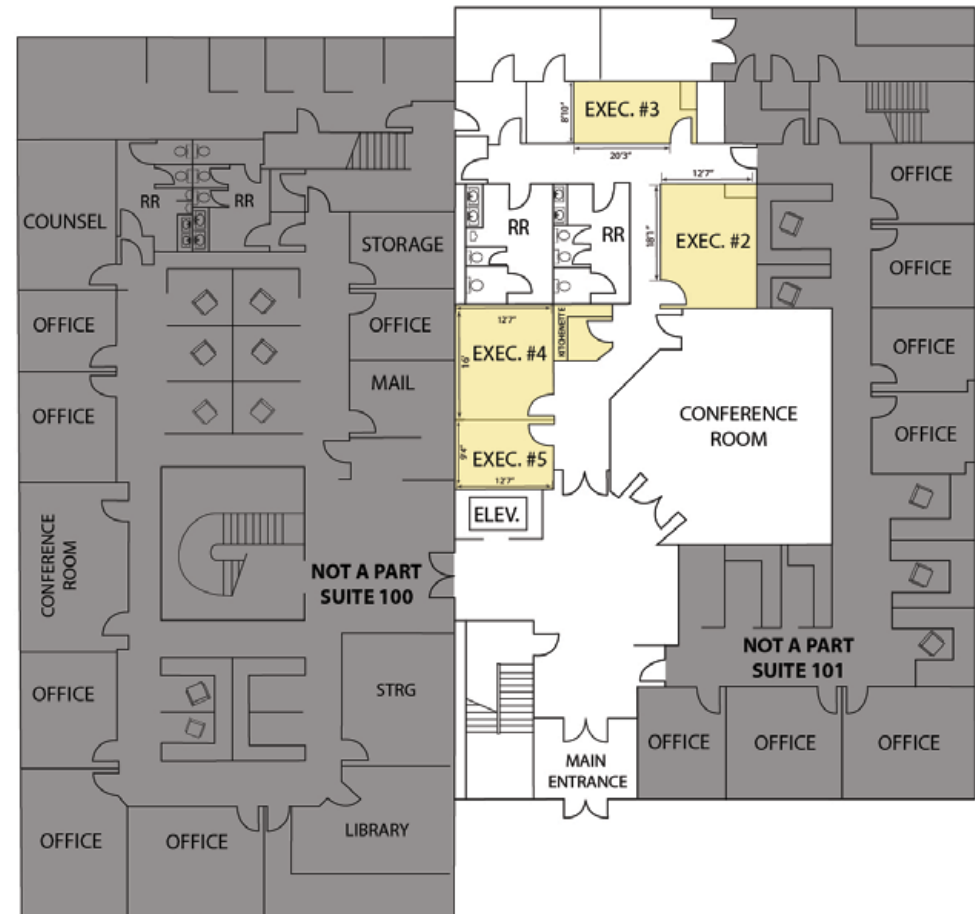
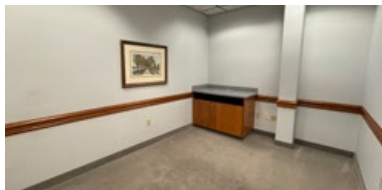
## Executive Office 4

- + **Total SF:** ±215
- + **Monthly Rent:** \$860/M FS



## Executive Office 5

- + **Total SF:** ±130
- + **Monthly Rent:** \$520/M FS

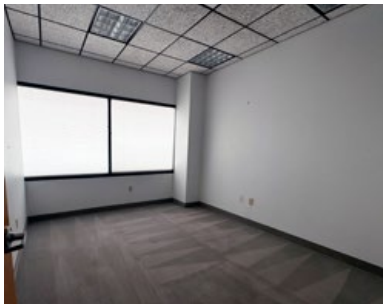


*Drawings and plans are not to scale. Any measurements are approximate and are for illustrative purposes only. There is no guarantee, warranty or representation as to the accuracy or completeness of any plans or designs.*

*Partially furnished with full cubical farm*

- 
- Floor Plan Details:**
- Top Left:** BREAK ROOM (11'10" x 32')
  - Top Center:** SERV. STOR. (11'6" x 13'1")
  - Top Right:** OFFICE (12'11" x 11'6")
  - Middle Left:** RR (Restroom), RR (Restroom), FILE (14'5" x 15'1"), ELEV. (Elevator), FILE (15'6" x 15'11")
  - Middle Right:** OFFICE (12'11" x 11'6"), OFFICE (11'9"), OFFICE (13'1" x 11'9"), OFFICE (12'10" x 11'3"), OFFICE (12'8" x 11'9"), OFFICE (12'8" x 12'6")
  - Bottom:** OFFICE (13'10" x 12'), OFFICE (13'10" x 11'9"), OFFICE (13'11" x 17'11"), OFFICE (14'7" x 17'5")

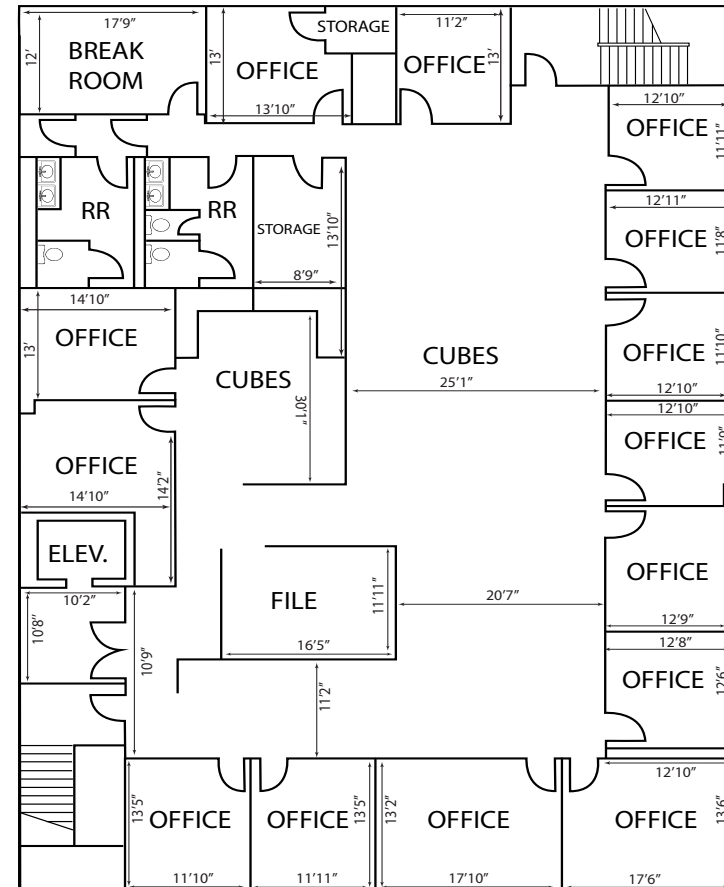
*Drawings and plans are not to scale. Any measurements are approximate and are for illustrative purposes only. There is no guarantee, warranty or representation as to the accuracy or completeness of any plans or designs.*



## Suite 300

- + Total SF:** ±7,228 SF (can be combined with 2nd floor for approx. ±14,456 SF or tenant can take the entire building ±21,859 SF)
- + Lease Rate:** \$1.25 PSF FS Introductory rate for the first (6) months then \$2.15 PSF FS
- + Offices:** 15
- + Cubicles:** Yes
- + Conference Room:** Shared Common Area
- + Restroom:** Men - 2 stalls  
Women - 2 stalls
- + Bull Pen:** Yes
- + Breakroom:** Yes
- + Server Room:** Yes
- + File Room:** 2
- + Reception:** Shared Common Area
- + Available:** Immediately

Partially furnished with full cubical farm



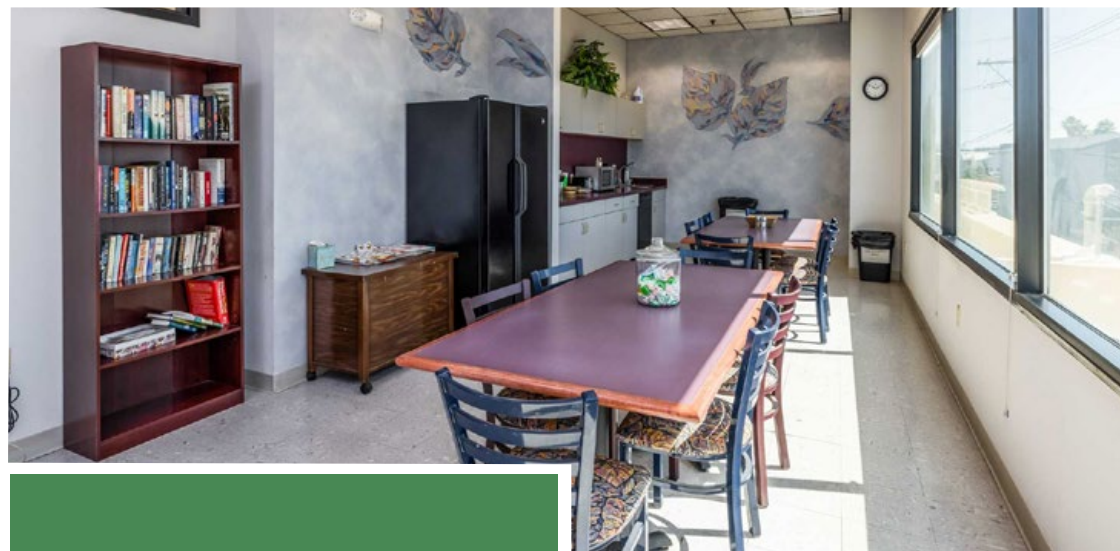
Drawings and plans are not to scale. Any measurements are approximate and are for illustrative purposes only. There is no guarantee, warranty or representation as to the accuracy or completeness of any plans or designs.





1100 E. BRIDGER AVENUE  
Las Vegas, NV 89101

For Lease



**MDLGroup**  
Service you deserve. People you trust.

**CORFAC**  
INTERNATIONAL  
MEMBER | PARTNER

5960 South Jones Boulevard  
Las Vegas, Nevada 89118

T 702.388.1800 | F 702.388.1010  
[www.mdlgroup.com](http://www.mdlgroup.com)



# Clark County Nevada

## Synopsis

As of the 2020 census, the population was 2,265,461, with an estimated population of 2,350,611 in 2024. Most of the county population resides in the Las Vegas Census County Divisions across 435 square miles. It is by far the most populous county in Nevada, and the 14th most populous county in the United States. It covers 7% of the state's land area but holds 73% of the state's population, making Nevada one of the most centralized states in the United States.

With jurisdiction over the world-famous Las Vegas Strip and covering an area the size of New Jersey, Clark County is the nation's 14th-largest county. The County is a mix of urban and rural locales that offers the convenience of city living with access to some of the nation's best outdoor recreational areas just a short drive away.

Clark County employs more than 10,000 people over 38 departments. The County has an annual budget of \$11.4 billion, which surpasses that of the state government.

## Quick Facts

±7,892

Land Area  
(Square Miles)

2,265,461

Population

298

Pop. Density  
(Per Square Mile)

Sources: [clarkcountynv.gov](http://clarkcountynv.gov), [data.census.gov](http://data.census.gov), [lvgea.org](http://lvgea.org), [wikipedia.com](http://wikipedia.com)



## Market Overview

# Downtown Las Vegas

Downtown Las Vegas is the central business district and historic center of Las Vegas, Nevada. As the urban core of the Las Vegas Valley, it features a variety of hotel and business high-rises, cultural centers, historical buildings and government institutions, as well as residential and retail developments. Downtown is located in the center of the Las Vegas Valley and just north of the Las Vegas Strip, centered on Fremont Street, the Fremont Street Experience and Fremont East. The city defines the area as bounded by I-15 on the west, Washington Ave. on the north, Maryland Pkwy. on the east and Sahara Ave. on the south. The downtown area is made up of 8 districts: the Fremont East Entertainment District, Arts District, Symphony Park, Las Vegas Medical District, Civic & Business District, Founders District, Downtown Casino & Resort District, and Market Corridor.

Source: [www.wikipedia.com](http://www.wikipedia.com)



# Professional Sports

## Synopsis

The Las Vegas Valley is home to many sports, most of which take place in the unincorporated communities around Las Vegas rather than in the city itself. It has rapidly established itself as a premier sports city, hosting a lineup of major professional teams that have brought home championships. These successful teams not only foster fan interest and growth but also play a significant role in strengthening the local economy.

The Vegas Golden Knights, the city's first major league franchise, wasted no time making their mark by winning the Stanley Cup in 2023. The Las Vegas Aces have dominated the WNBA, securing back-to-back championships in 2022 and 2023. The Las Vegas Raiders, while having their championship triumphs tied to their time in Oakland and Los Angeles, have a storied history that includes three world championship victories (XI, XV, and XVIII). The Las Vegas Athletics brings a legacy of 9 world championships and are looking to add more at their new home. These teams have not only captivated local fans but have also helped solidify reputation of the city as a major player in the world of professional sports.

Las Vegas is also a great place for minor league sports, with the Las Vegas Aviators (Minor League Baseball, Triple-A affiliate of the Las Vegas Athletics), the Henderson Silver Knights (American Hockey League, affiliate of the Vegas Golden Knights), and the Las Vegas Lights FC (USL Championship soccer) all calling the area home. The city also has indoor football and box lacrosse teams, the Vegas Knight Hawks and the Las Vegas Desert Dogs, respectively, who share a venue in Henderson.



WORLD CHAMPIONS



WORLD CHAMPIONS



WORLD CHAMPIONS



WORLD CHAMPIONS



**HENDERSON**  
SILVER KNIGHTS™





# Nevada Tax Advantages

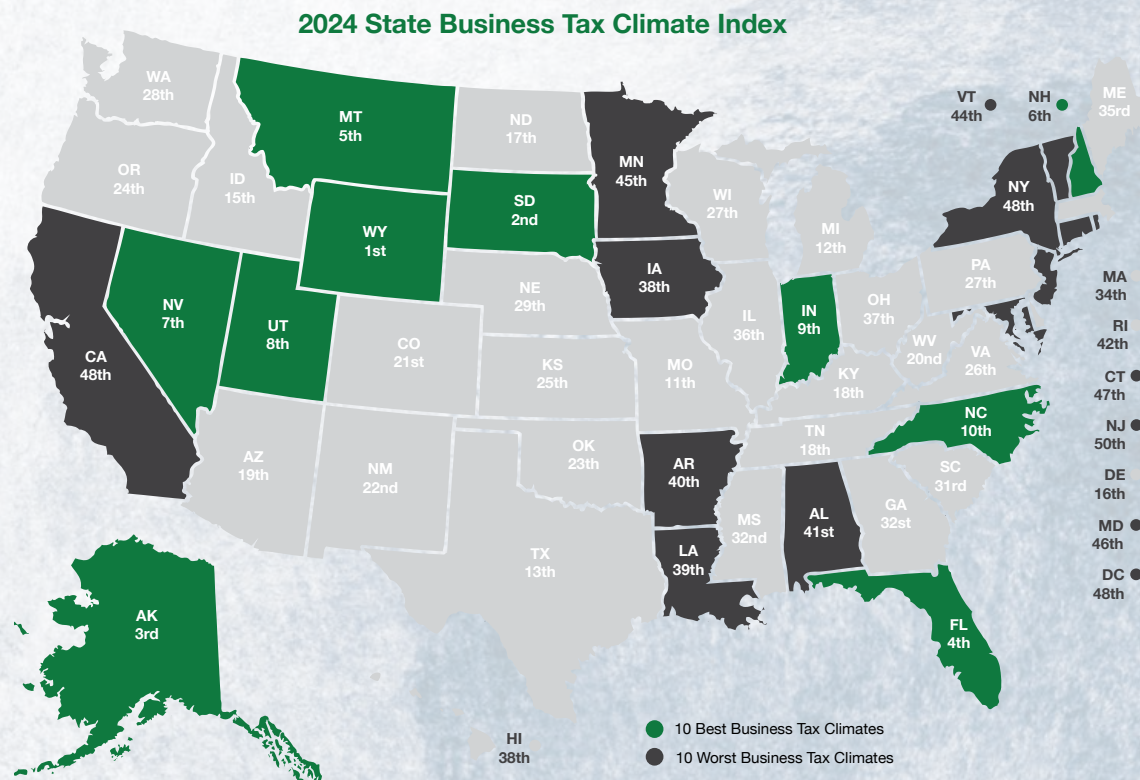
## NEVADA

has always been a popular choice for businesses due to various factors such as low-cost startup, regulatory benefits, and competitive utility rates.

The Tax Climate Index ranking  
California ranks 48th, Arizona 14th,  
Idaho 16th, Oregon 28th and Utah  
8th.

### Here are the main tax advantages of this state:

- No income tax
- No tax on pensions
- No tax on social security
- No tax on estate or inheritance
- Low property taxes
- No gross receipts tax
- No franchise tax
- No inventory tax
- No tax on issuance of corporate shares
- No tax on sale or transfer of shares



## Nevada Tax System:

Nevada is ranked 7th in the Tax Foundation's 2020 State Business Tax Climate Index, focusing on corporate taxes, individual income taxes, sales taxes, unemployment insurance taxes, and property taxes.

*Source: Nevada Governor's Office of Economic Development;  
[www.TaxFoundation.org](http://www.TaxFoundation.org)*



### Road Transportation

Las Vegas, and surrounding towns are less than one day's drive over arterial interstate highways to nearly 60 million consumers as well as to the major U.S. deep water seaports serving the Pacific Rim.



### Rail Transportation

Major Union Pacific and Southern Pacific rail connections in Las Vegas and Reno also, too, play an essential role in carrying the world's freight from the Pacific Coast to America's Heartland and beyond.



### Air Transportation

Globally, Harry Reid International Airport in Las Vegas has been a Top 20 airport for more than five years, annually serving more than 40 million and handling more than 189 million pounds of cargo.



Service you deserve. People you trust.



5960 South Jones Boulevard  
Las Vegas, Nevada 89118

T 702.388.1800 | F 702.388.1010  
[www.mdlgroup.com](http://www.mdlgroup.com)

# Southern Nevada Growth

200,000+

Number of jobs added between 2011 and 2019.

7,500+

Number of new businesses added between 2011 and 2019.

85%

Milestone graduation rate for Clark County school district in 2019.



## Education & Workforce Development

Southern Nevada's post-secondary education and training institutions have significantly increased their offerings.

Notably, the **University of Nevada, Las Vegas (UNLV)** doubled its research and development (R&D) performance over the last decade and reached R1 status in 2018, the highest classification for research universities. Additionally, the newly formed UNLV School of Medicine started class in 2017.

**Nevada State College (NSC)** more than double its degree awards since 2011, with especially strong growth in awards to racial and ethnic minorities, and in health professions that support a key regional target industry.

**The College of Southern Nevada (CSN)** was named as a Leader College of Distinction by national non-profit network Achieving the Dream in 2019 for its work on improving student outcomes and reducing student achievement gaps.

## Innovation Ecosystem

In 2016, Las Vegas established an Innovation District to spur smart-city technology infrastructure and launched the International Innovation Center @ Vegas (IIC@V) incubator to support development of high priority emerging technologies.

The Las Vegas-based Nevada Institute for Autonomous Systems was designated in 2013 as one of six official unmanned aircraft systems (UAS) test sites in the United States, and the UNLV Tech Park has quickly emerged as a hub for regional innovation.

In July 2019, Google broke ground on a \$600 million data center, and in October 2019 Switch announced a partnership with UNLV to support sports science R&D. Switch also expanded its footprint in Southern Nevada to 4.6M SF of data center space.

The Las Vegas Convention and Visitors Authority (LVCVA) partnered with the Boring Company to build a high-speed electric autonomous people mover for the Las Vegas Convention Center.

*Source: Las Vegas Global Economic Alliance (LVGEA)*



# Transit from Las Vegas

Destination	Est. Travel Time	Distance (Mi)
Los Angeles, CA	3 hrs, 55 min	265
Phoenix, AZ	4 hrs, 40 min	300
San Diego, CA	4 hrs, 45 min	327
Salt Lake City, UT	5 hrs, 50 min	424
Reno, NV	6 hrs, 55 min	452
San Francisco, CA	8 hrs, 15 min	565
Boise, ID	9 hrs, 30 min	634
Santa Fe, NM	9 hrs, 10 min	634
Denver, CO	10 hrs, 45 min	752
Cheyenne, WY	11 hrs, 50 min	837
Helena, MT	12 hrs, 55 min	907
Portland, OR	15 hrs, 45 min	982
Seattle, WA	16 hrs, 50 min	1,129



## Shipping and Mailing Services



**FedEx.**



Freight Service Center  
3 Mi

Freight Center  
3 Mi

Customer Service Center  
5 Mi

Distribution Center  
10 Mi

Ship Center  
8 Mi

Cargo Center  
3 Mi

UPS Air Cargo  
18 Mi

Air Cargo  
20 Mi

--



Service you deserve. People you trust.



5960 South Jones Boulevard  
Las Vegas, Nevada 89118

T 702.388.1800 | F 702.388.1010  
www.mdlgroup.com