

**843 McFarland Pkwy
Alpharetta, GA 30004
Forsyth County**

**EXCLUSIVELY OFFERED BY
WILSON HUTCHISON REALTY, LLC**

- +/- 28,800 SF office/warehouse building with +/- 1,500 SF storage building For Sale or Lease
- Asking \$4,900,000.00
- Asking \$11.50/SF NNN
- 16' Clear Height
- 7 Drive-In Doors
- +/- 19,000 SF warehouse
- +/- 9,000 SF showroom/office
- +/- 2.0 acres
- Fenced and gated w/ 6 cameras
- Heavy parking
- 800 AMP Service
- Zoned CBD



**Robert Wilson
770-318-9439 – Cell
Or
Robert@wilsonhutch.com**

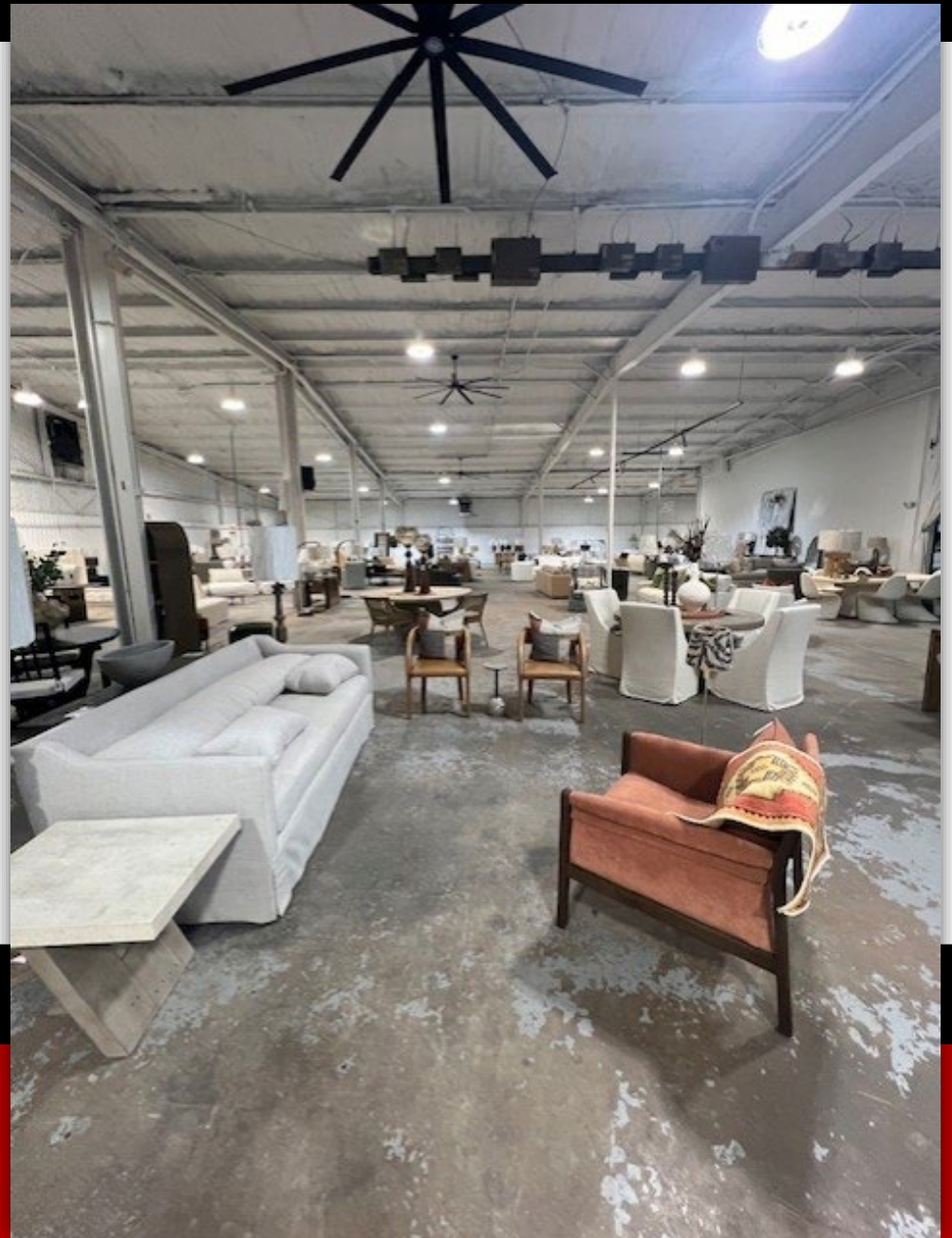


The information has been secured from sources we believe to be reliable, but we make no representations or warranties, expressed or implied, as to the accuracy of the information.

5755 North Point Parkway, Suite 44, Alpharetta, GA 30022 Tel: 770-242-7917 Fax: 678-325-4824 | www.wilsonhutch.com

**843 McFarland Pkwy
Alpharetta, GA 30004
Forsyth County**

**EXCLUSIVELY OFFERED BY
WILSON HUTCHISON REALTY, LLC**



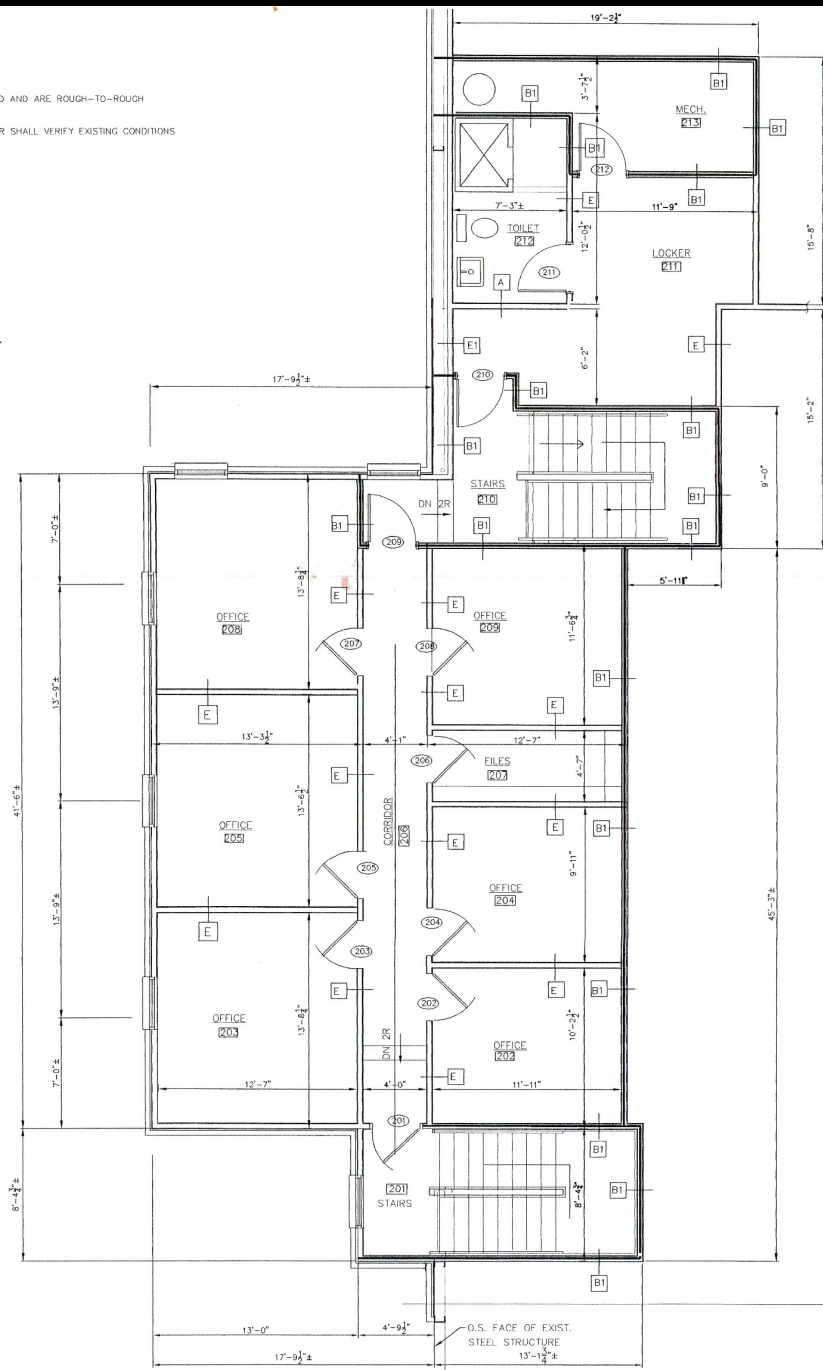
**Robert Wilson
770-318-9439 – Cell
Or
770-242-7917 x 3**



The information has been secured from sources we believe to be reliable, but we make no representations or warranties, expressed or implied, as to the accuracy of the information.

5755 North Point Parkway, Suite 44, Alpharetta, GA 30022 Tel: 770-242-7917 Fax: 678-325-4824 | www.wilsonhutch.com

D AND ARE ROUGH-TO-ROUGH
R SHALL VERIFY EXISTING CONDITIONS



SECOND FLOOR PLAN

1/4" = 1'-0"



The information has been secured from sources we believe to be reliable, but we make no representations or warranties, expressed or implied, as to the accuracy of the information.

5755 North Point Parkway, Suite 44, Alpharetta, GA 30022 Tel: 770-242-7917 Fax: 678-325-4824 | www.wilsonhutch.com