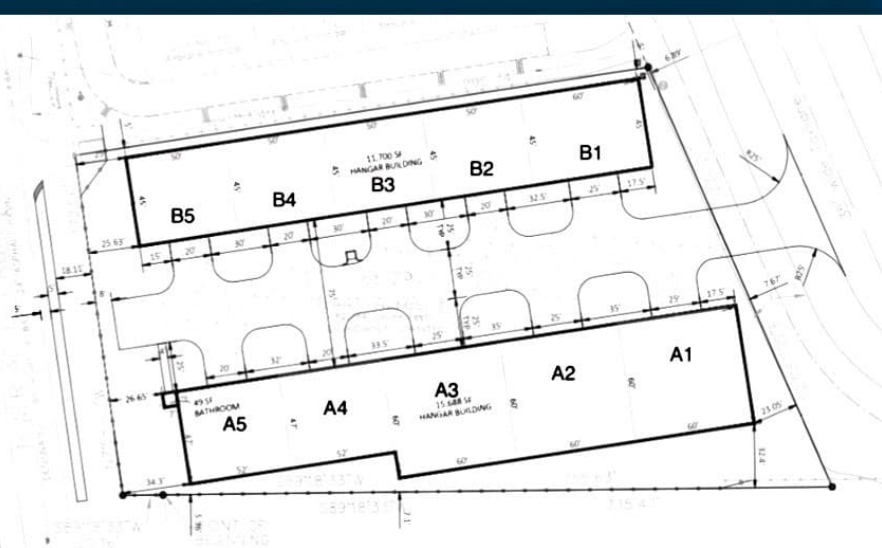




2090 W Eau Gallie Blvd. Suite A  
 Melbourne, FL 32935  
**(321) 474-3515**  
 sales@sabalaviation.com



**LANDINGS SOUTH**  
 AT MELBOURNE ORLANDO INTERNATIONAL AIRPORT KMLB

60 X 60



52 X 47



50 X 45



**INCLUDED FEATURES**

- Pre-plumbed for Half-bath
- Automatic Garage Door Opener
- 60 AMP Electrical Panel
- Hose Bibb

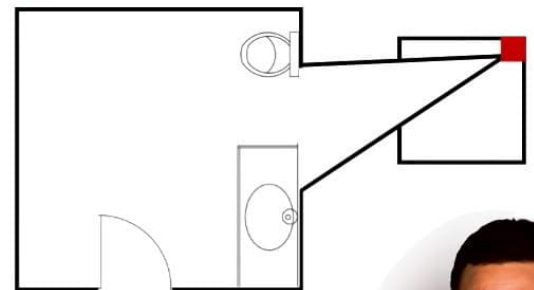
**PHASE 1**

UNIT	SIZE	DOOR HEIGHT	PRICE
A1	60x60x15	15FT	SOLD
A2	60x60x15	15FT	\$479,000
A3	60x60x15	15FT	SOLD
A4	52x47x15	15FT	SOLD
A5	52x47x15	15FT	SOLD
B1	60x45x14	14 FT	SOLD
B2	50x45x14	14 FT	SOLD
B3	50x45x14	14 FT	\$279,000
B4	50x45x14	14 FT	\$279,000
B5	50x45x14	14 FT	\$279,000

**OPTIONAL UPGRADES**

- Epoxy Base, Polyaspartic Flooring
- Utility Sink
- Thermal Insulation
- Sidewalk
- Air Conditioning
- Industrial Fan
- Half-Bath 7' x 7' x 8'

**OPTIONAL HALF-BATH**



**BRYAN YANCEY**  
 REALTOR | RET. ARMY GREEN BERET  
**(321) 474-3515**  
 BRYAN@GREGELLINGSON.COM



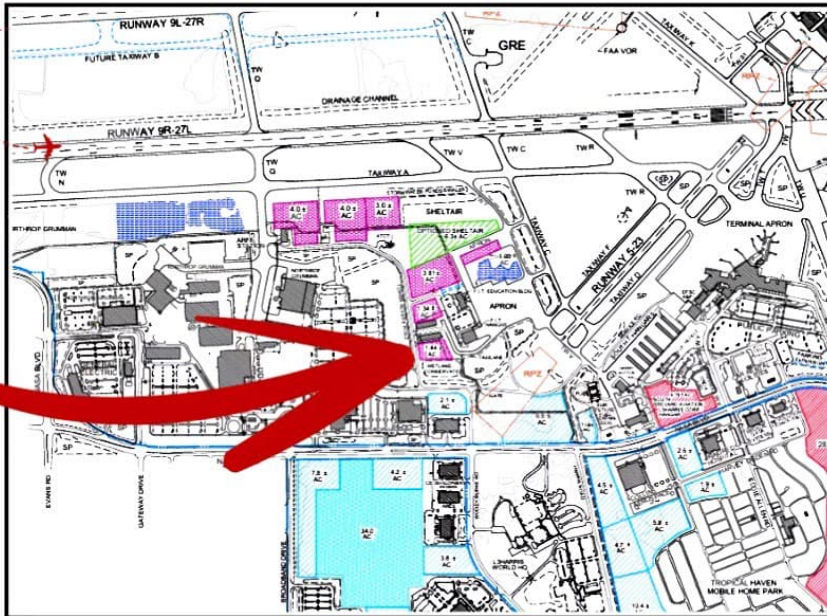
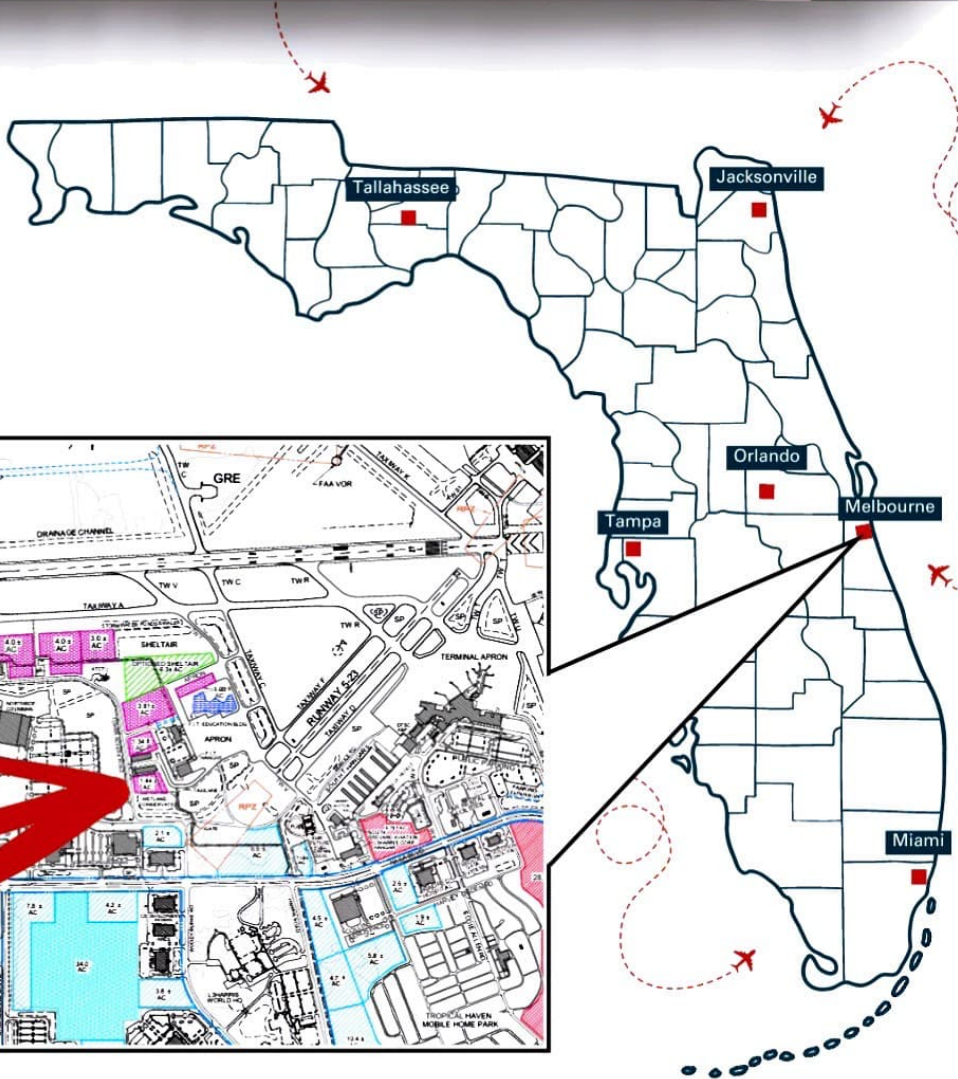
# LANDINGS SOUTH

AT MELBOURNE ORLANDO INTERNATIONAL AIRPORT KMLB



**Sabal**  
AVIATION

2090 W Eau Gallie Blvd. Suite A  
Melbourne, FL 32935  
**(321) 474-3515**  
sales@sabalaviation.com



**PHASE 1**  
**PHASE 2**  
**PHASE 3**

## INDUSTRY LEADING WORKFORCE



Changes and modifications to floor plans, materials and specifications may be made without notice. Some items pictured or illustrated are optional and are an additional cost. Dimensions are approximate. Illustrations are artist renderings only. Customer-specific detailed drawings and specifications will be furnished to each customer as part of their Building Agreement.

