

Sublease Available

cresa



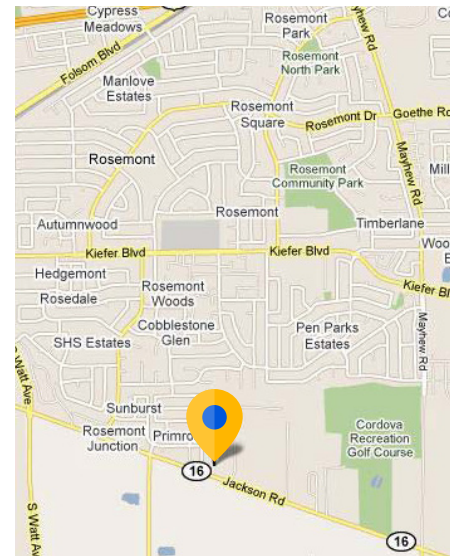
Industrial Building with Fenced Yard Sacramento, CA

Overview

Building:	9189 Jackson Rd. Sacramento, CA 95826
Premises:	± 14,000 SF ± 4,100 SF Office
Term:	Sublease Term Through 9/30/2028
Available:	Immediately
Rental Rate:	Withheld
Yard:	± 29,000 SF Fence Yard
Year Constructed:	2000
Parcel Size:	± 1.48 Acres (± 64,469 SF)
Zoning:	M-1 Light Industrial

Space Specs

- Four Grade Level Doors (12'X14')
- Prominent Street Frontage
- Wet Sprinkler System
- Condition of Property AS-IS



For more information:



Jim Niethammer
916.801.9400 mobile
jniethammer@cresa.com

Cresa

1200 46th Street,
Sacramento, CA 95819

Cresa © 2019. All rights reserved. The information contained in this document has been obtained from sources believed reliable. While Cresa does not doubt its accuracy, Cresa has not verified it and makes no guarantee, warranty, or representation about it. It is your responsibility to independently confirm its accuracy and completeness. Any projections, opinions, assumptions or estimates used are for example only and do not represent the current or future performance of the property. The value of this transaction to you depends on tax and other factors which should be evaluated by your tax, financial and legal advisors. You and your advisors should conduct a careful, independent investigation of the property to determine to your satisfaction the suitability of the property for your needs.

Sublease Available

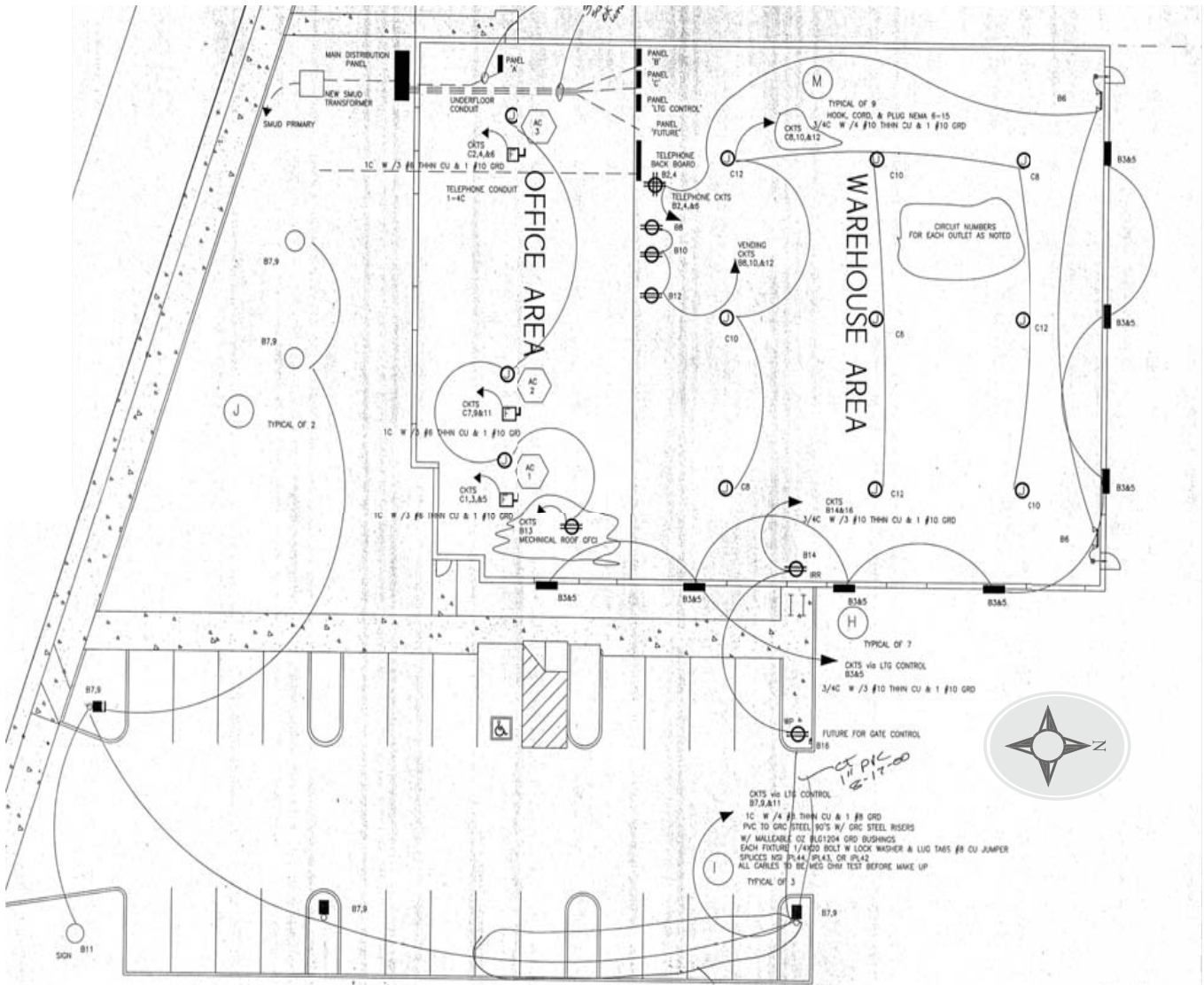
cresa

9189 Jackson Rd.

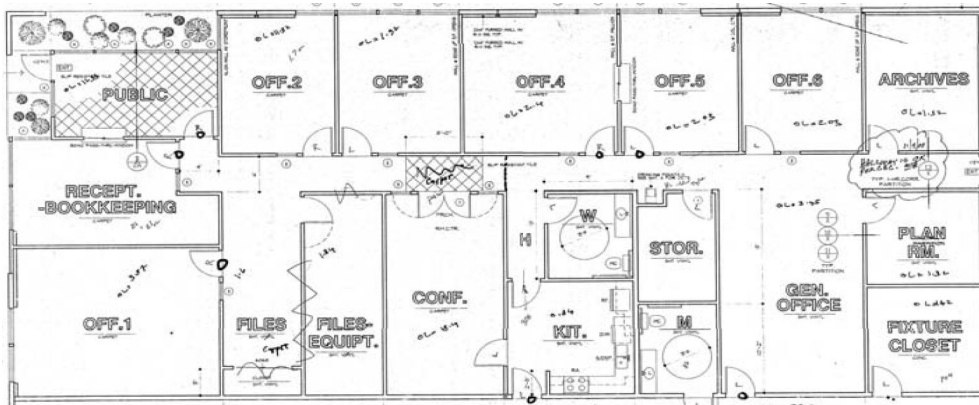
Sacramento, CA 95826



Building Plan



Office Layout



***GROSS INTERNAL AREA AND EXTERNAL YARD AREA DIMENSIONS AND LAYOUT ARE APPROXIMATE, ACTUAL MAY VARY.**

9189 Jackson Rd.

Sacramento, CA 95826

Aerial



**± 29,000 SF
Fence Yard
Area***

***ALL GROSS INTERNAL
AND EXTERNAL AREA
DIMENSIONS AND
LAYOUTS ARE
APPROXIMATE, ACTUAL
MAY VARY.**