

# For Sale

## 5400 Patton Dr

Lisle, Illinois 60532

### PROPERTY HIGHLIGHTS

- 4,970 SF Office/Flex Condo For Sale
- Access to shared docks (2) and drive-in ramp
- 12' Clear Height
- Fully Sprinklered
- Handicap accessible
- Parcel # 08-10-314-005
- Taxes: \$15,087.20 (2023) | \$1.64/SF
- Low DuPage taxes
- Zoned I-1, Lisle
- 135 parking spaces

**ASKING PRICE:**  
**\$670,950.00**



### Contact

Aubrey Englund

+1 630 693 0679

aenglund@hiffman.com

Caroline Firrantello

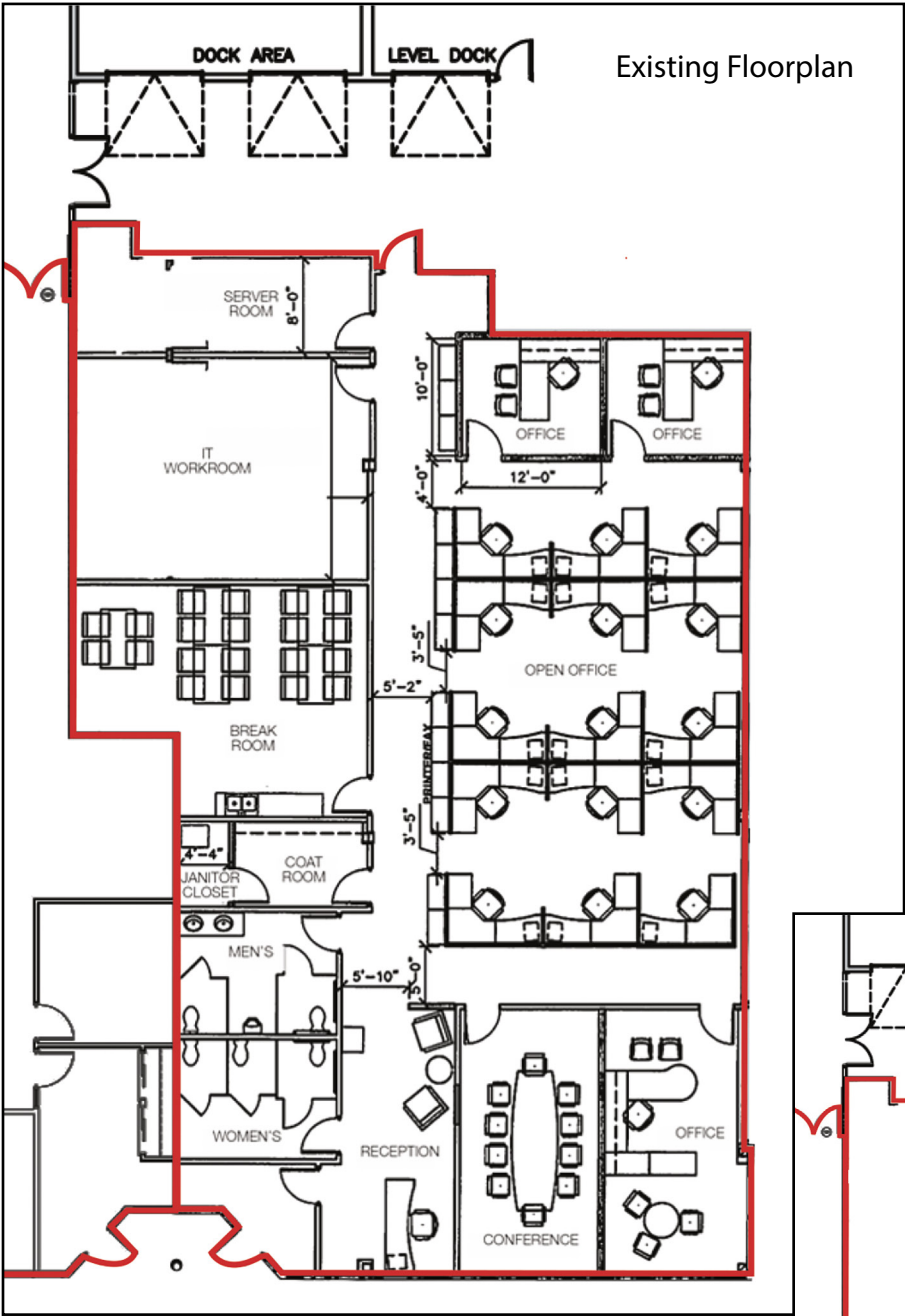
+1 630 235 7878

cfirrantello@hiffman.com

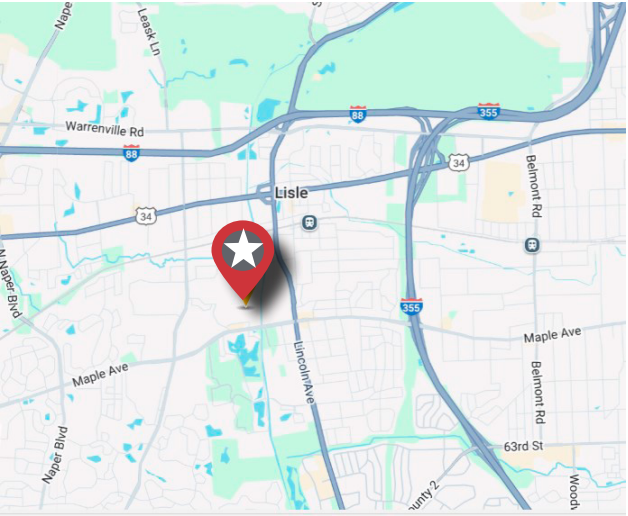
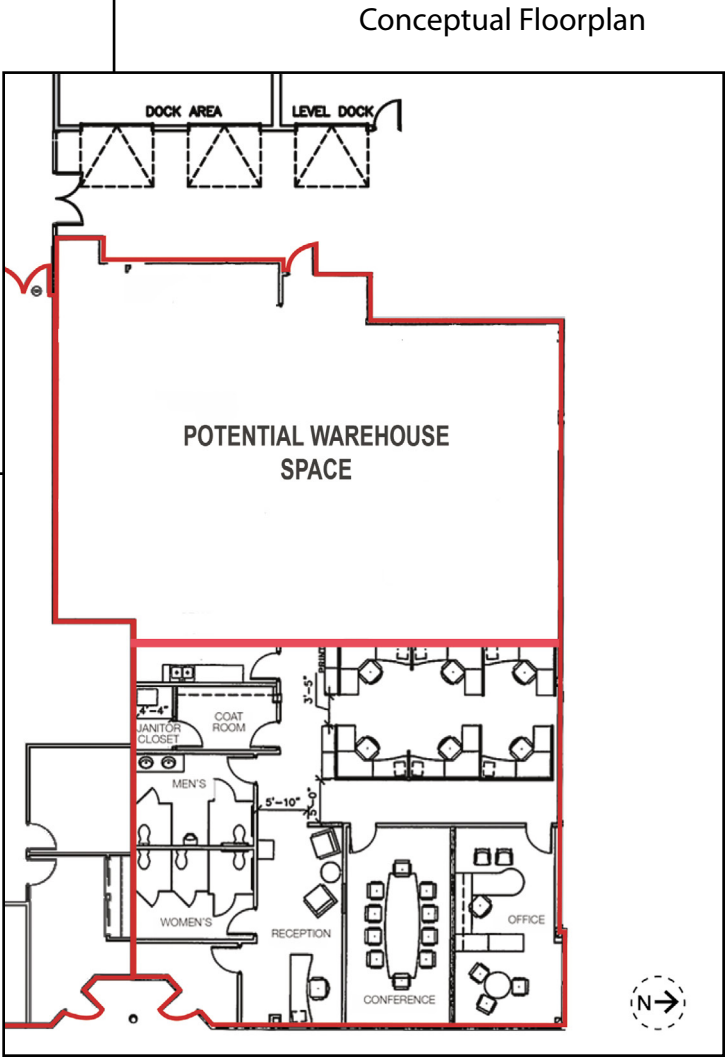
One Oakbrook Terrace  
Suite 600  
Oakbrook Terrace, Illinois 60181  
+1 630 932 1234

[hiffman.com](http://hiffman.com)

NO WARRANTY OR REPRESENTATION, EXPRESS OR IMPLIED, IS MADE AS TO THE ACCURACY OF THE INFORMATION CONTAINED HEREIN, AND THE SAME IS SUBMITTED SUBJECT TO ERRORS, OMISSIONS, CHANGE OF PRICE, RENTAL OR OTHER CONDITIONS, PRIOR SALE, LEASE OR FINANCING, OR WITHDRAWAL WITHOUT NOTICE, AND OF ANY SPECIAL LISTING CONDITIONS IMPOSED BY OUR PRINCIPALS NO WARRANTIES OR REPRESENTATIONS ARE MADE AS TO THE CONDITION OF THE PROPERTY OR ANY HAZARDS CONTAINED THEREIN ARE ANY TO BE IMPLIED.

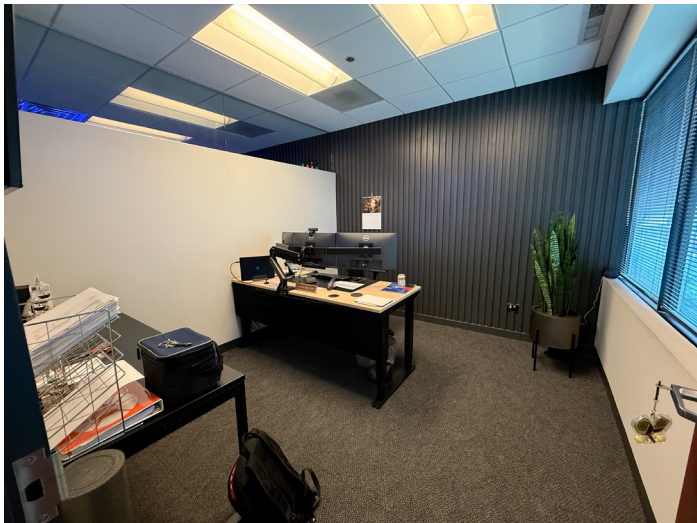


[Property Website](#)





5400 PATTON DRIVE, LISLE, ILLINOIS | FOR SALE



One Oakbrook Terrace  
Suite 600  
Oakbrook Terrace, Illinois 60181  
+1 630 932 1234

**NAL**Hiffman

[hiffman.com](http://hiffman.com)