

Restaurant or Event Space

1405 ECORSE, YPSILANTI, MI 48198



Swisher
COMMERCIAL

**FOR SALE
& LEASE**



SUMMARY

Sale Price:	\$650,000
Lease Rate:	\$16.00 SF/yr NNN
Lot Size:	0.46 Acres
Building Size:	6,102 SF
Zoning:	NC (Neighborhood Corridor)
Parcel #:	K-11-11-331-008

PROPERTY HIGHLIGHTS

- Ideal for restaurant, event space, or retail store
- Stand-alone 6,102 SF building
- At-the-door parking
- Highly visible, signalized corner location
- Versatile commercial space for various business uses
- Expansive kitchen with hood system
- Large walk-in cooler for food storage
- Roomy dining area
- Additional space available for private parties or events
- Two dedicated office spaces
- Prominent pylon and building signage for visibility
- Close proximity to residential areas

208 East Washington Street Ann Arbor, MI 48104

734.663.0501

Jeff Evans

734.926.0222

JEFFEVANS@SWISHERCOMMERCIAL.COM

Scott Schmunk

734.223.0278

SSCHMUNK@SWISHERCOMMERCIAL.COM

***Building
relationships.***

SWISHERCOMMERCIAL.COM

Restaurant or Event Space for Sale or Lease

1405 ECORSE, YPSILANTI, MI 48198



PROPERTY DESCRIPTION

This 6,102 SF stand-alone building, situated on a .46 acre lot, presents a versatile commercial space ideal for a variety of business uses. Located at the highly visible, signalized corner of Ecorse Road and Woodlawn Street, just west of Ford Boulevard, this property offers excellent exposure and accessibility in the heart of Ypsilanti Township.

Property Features:

- Zoning: NC (Neighborhood Corridor) – Ypsilanti Township
- Building Size: 6,102 SF
- Lot Size: .460 acres
- Expansive Kitchen: Fully equipped with a hood system, perfect for restaurant or catering operations.
- Large Walk-In Cooler: Ideal for food storage or other temperature-sensitive items with direct access to drink coolers.
- Ample Interior Space: Roomy dining area with potential for a dance floor, making it perfect for events, dining, or entertainment.
- Private Event Space: Additional space available for private parties or special events.
- Office Spaces: Two dedicated office spaces for administrative functions.
- Parking: Convenient at-the-door parking with additional parking available in the rear.
- Visibility: Prominent pylon signage and additional building signage ensure your business is easily noticed.

Location Highlights:

- Situated on a major thoroughfare, Ecorse Road, providing easy access and high traffic.
- Corner lot maximizing visibility and accessibility.
- Close proximity to residential areas, making it a prime location for neighborhood-oriented businesses.

Ideal For: This property is ideal for a restaurant, event space, retail store, or any business looking to capitalize on the high visibility and ample space provided by this prime location.

LOCATION DESCRIPTION

Near US-12 and US-94 between Willow Run and Rawsonville.

***Building
relationships.***

208 East Washington Street Ann Arbor, MI 48104

734.663.0501

Jeff Evans

734.926.0222

JEFFEVANS@SWISHERCOMMERCIAL.COM

Scott Schmunk

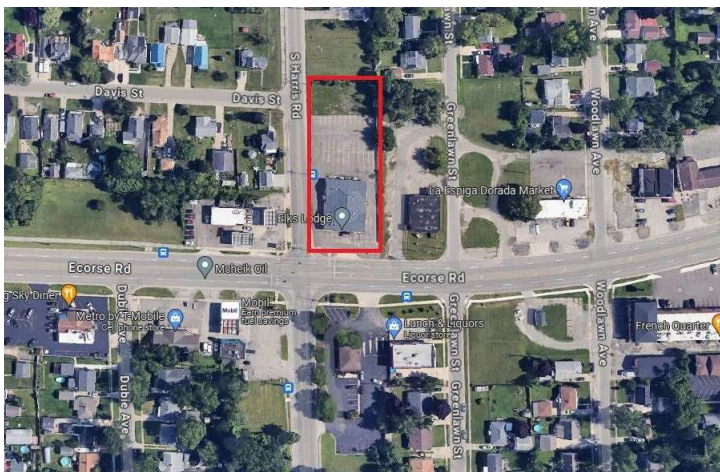
734.223.0278

SSCHMUNK@SWISHERCOMMERCIAL.COM

SWISHERCOMMERCIAL.COM

Restaurant or Event Space for Sale or Lease

1405 ECORSE, YPSILANTI, MI 48198



208 East Washington Street Ann Arbor, MI 48104

734.663.0501

Building relationships.

Jeff Evans
Scott Schmunk

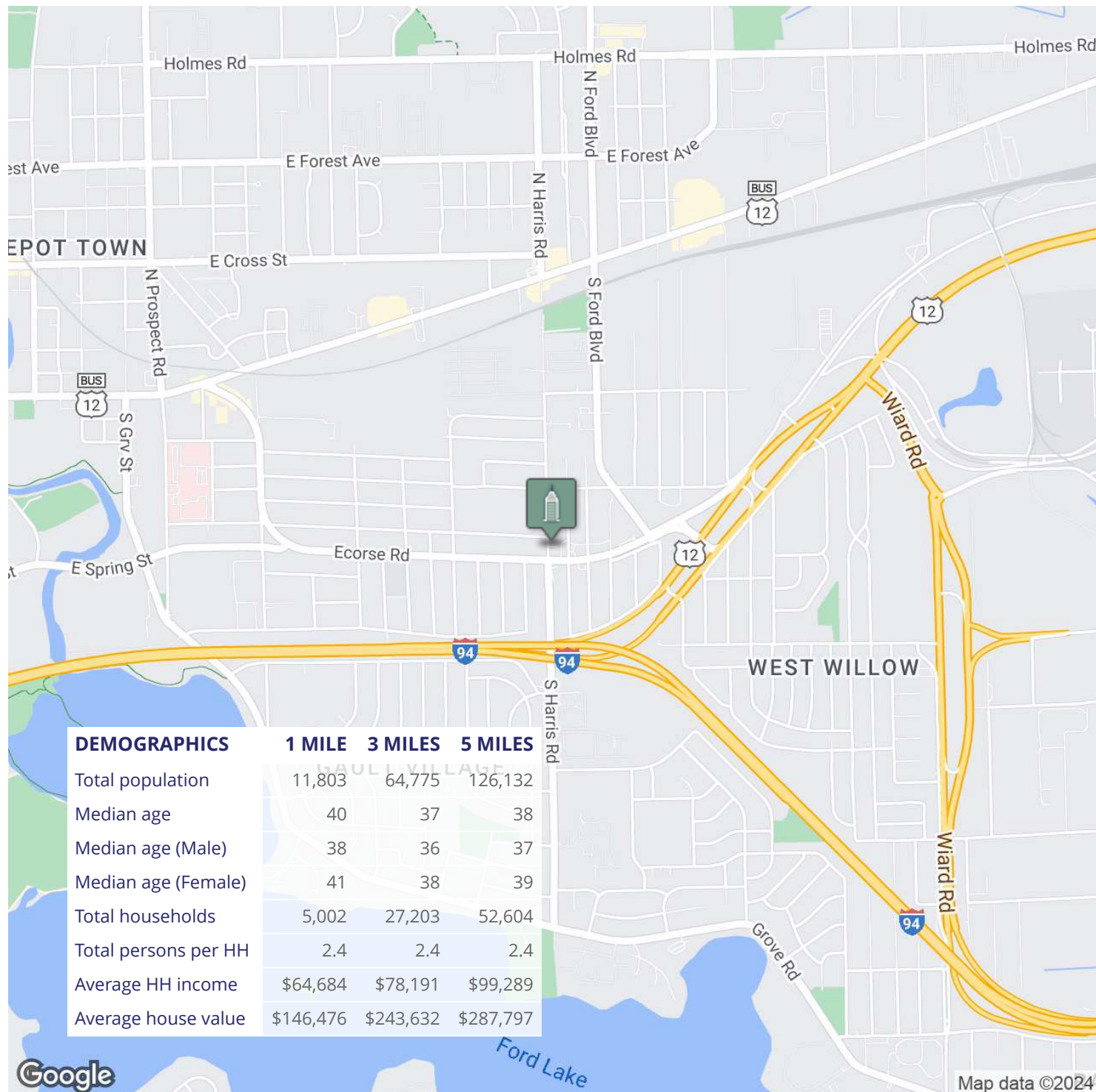
734.926.0222
734.223.0278

JEFFEVANS@SWISHERCOMMERCIAL.COM
SSCHMUNK@SWISHERCOMMERCIAL.COM

SWISHERCOMMERCIAL.COM

Restaurant or Event Space for Sale or Lease

1405 ECORSE, YPSILANTI, MI 48198



Building relationships.

208 East Washington Street Ann Arbor, MI 48104

734.663.0501

Jeff Evans
Scott Schmunk

734.926.0222
734.223.0278

JEFFEVANS@SWISHERCOMMERCIAL.COM
SSCHMUNK@SWISHERCOMMERCIAL.COM

SWISHERCOMMERCIAL.COM