



COMMERCIAL REAL ESTATE

RETAIL PROPERTY FOR SALE



Oakland Plaza

2176 Capital Circle SE
Tallahassee, FL 32301

BRYAN CURETON
Sales Associate
850.545.3687
bryan@tlgproperty.com

TLG REAL ESTATE SERVICES
3520 Thomasville Road, Suite 200
Tallahassee, FL 32309
O: 850.385.6363



EXECUTIVE SUMMARY

OAKLAND PLAZA

2176 CAPITAL CIRCLE SE, TALLAHASSEE, FL 32301

**OFFERING SUMMARY**

Sale Price:	\$2,875,000.00
Lot Size:	0.65 Acres
Year Built:	2021
Building Size:	8,000 SF
Zoning:	AC
APN:	31-09-20-247-0020
Zoning:	AC (Activity Center)

PROPERTY OVERVIEW

Oakland Plaza is a new construction, five-unit retail strip center and shares the property site with Oakland Apartments, a 20-unit luxury complex. The plaza fronts Capital Circle SE and is only minutes to the Southwood community. Four units are available and range in size from 1,500 - 6,000 SF.

Visit Us Online! www.tlgproperty.com

LOCATION OVERVIEW

Located directly on Capital Circle SE in front of Oakland Apartments.

[Click Here for Zoning Information](#)

ANOTHER BOULOS PROPERTY!

Bryan Cureton
850.545.3687
bryan@tlgproperty.com

TLG REAL ESTATE SERVICES
3520 Thomasville Road, Suite 200, Tallahassee, FL 32309
850.385.6363





ADDITIONAL PHOTOS

OAKLAND PLAZA

2176 CAPITAL CIRCLE SE, TALLAHASSEE, FL 32301



Bryan Cureton
850.545.3687
bryan@tlgproperty.com

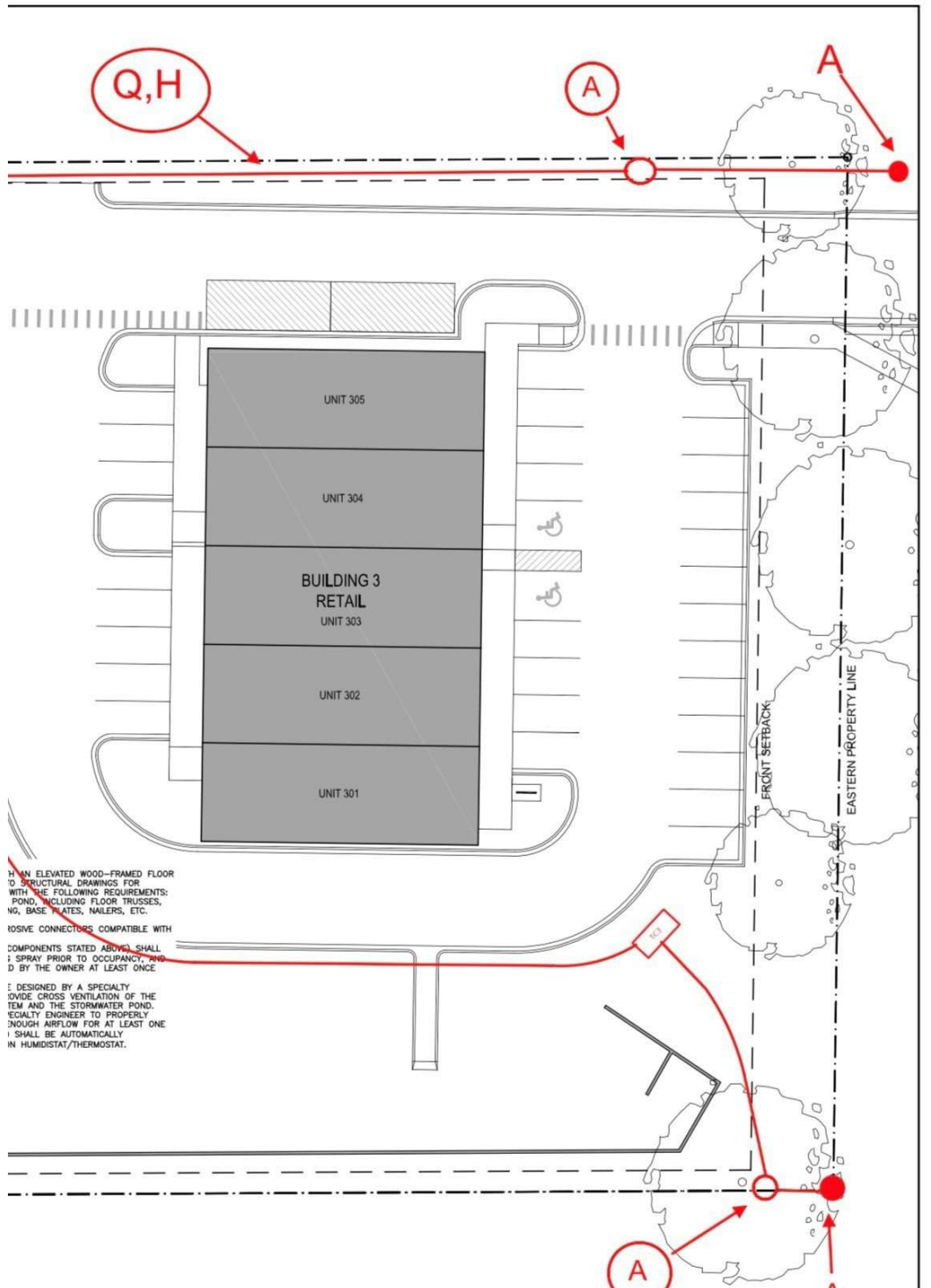
TLG REAL ESTATE SERVICES
3520 Thomasville Road, Suite 200, Tallahassee, FL 32309
850.385.6363





ADDITIONAL PHOTOS OAKLAND PLAZA

2176 CAPITAL CIRCLE SE, TALLAHASSEE, FL 32301



Bryan Cureton
850.545.3687
bryan@tlgproperty.com

TLG REAL ESTATE SERVICES
3520 Thomasville Road, Suite 200, Tallahassee, FL 32309
850.385.6363





RETAILER MAP OAKLAND PLAZA

2176 CAPITAL CIRCLE SE, TALLAHASSEE, FL 32301



Bryan Cureton
 850.545.3687
 bryan@tlgproperty.com

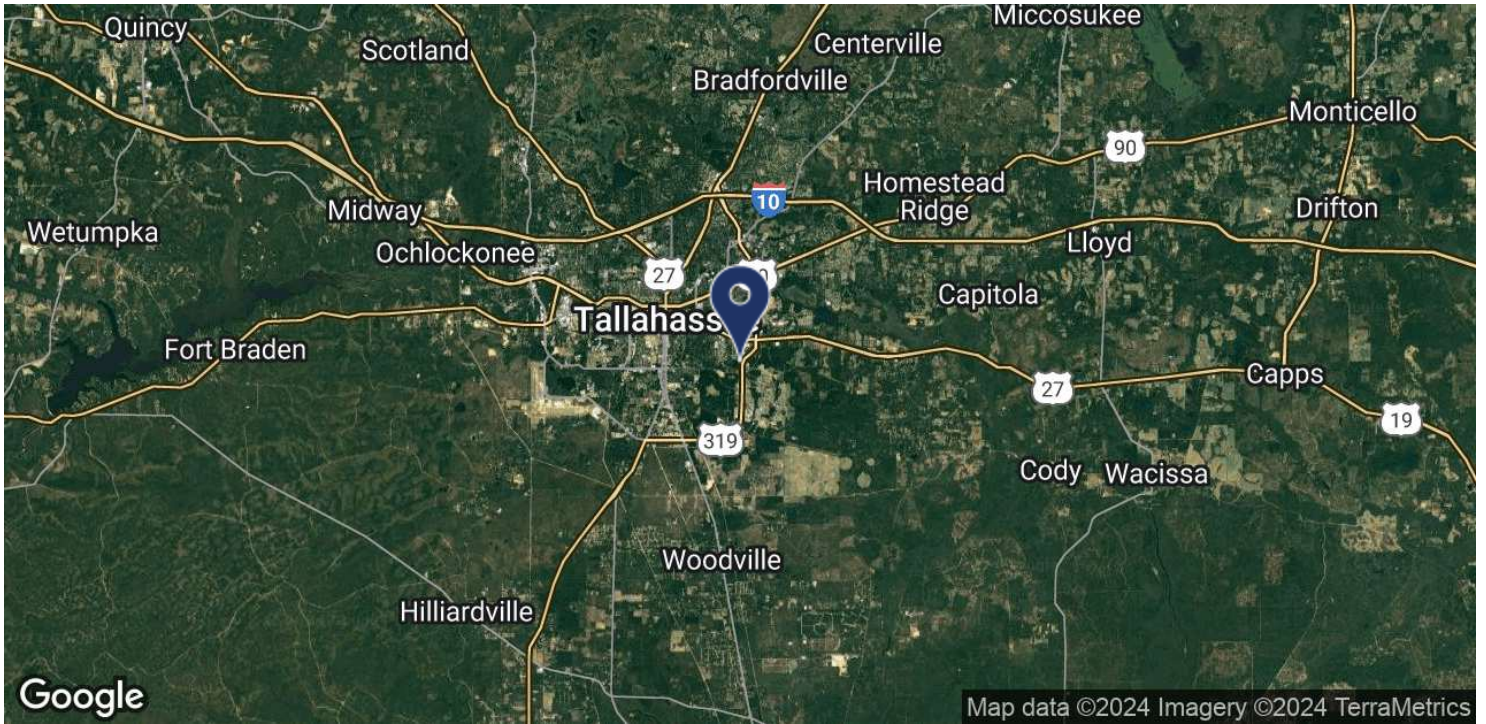
TLG REAL ESTATE SERVICES
 3520 Thomasville Road, Suite 200, Tallahassee, FL 32309
 850.385.6363





LOCATION MAP OAKLAND PLAZA

2176 CAPITAL CIRCLE SE, TALLAHASSEE, FL 32301



Bryan Cureton
850.545.3687
bryan@tlgproperty.com

TLG REAL ESTATE SERVICES
3520 Thomasville Road, Suite 200, Tallahassee, FL 32309
850.385.6363

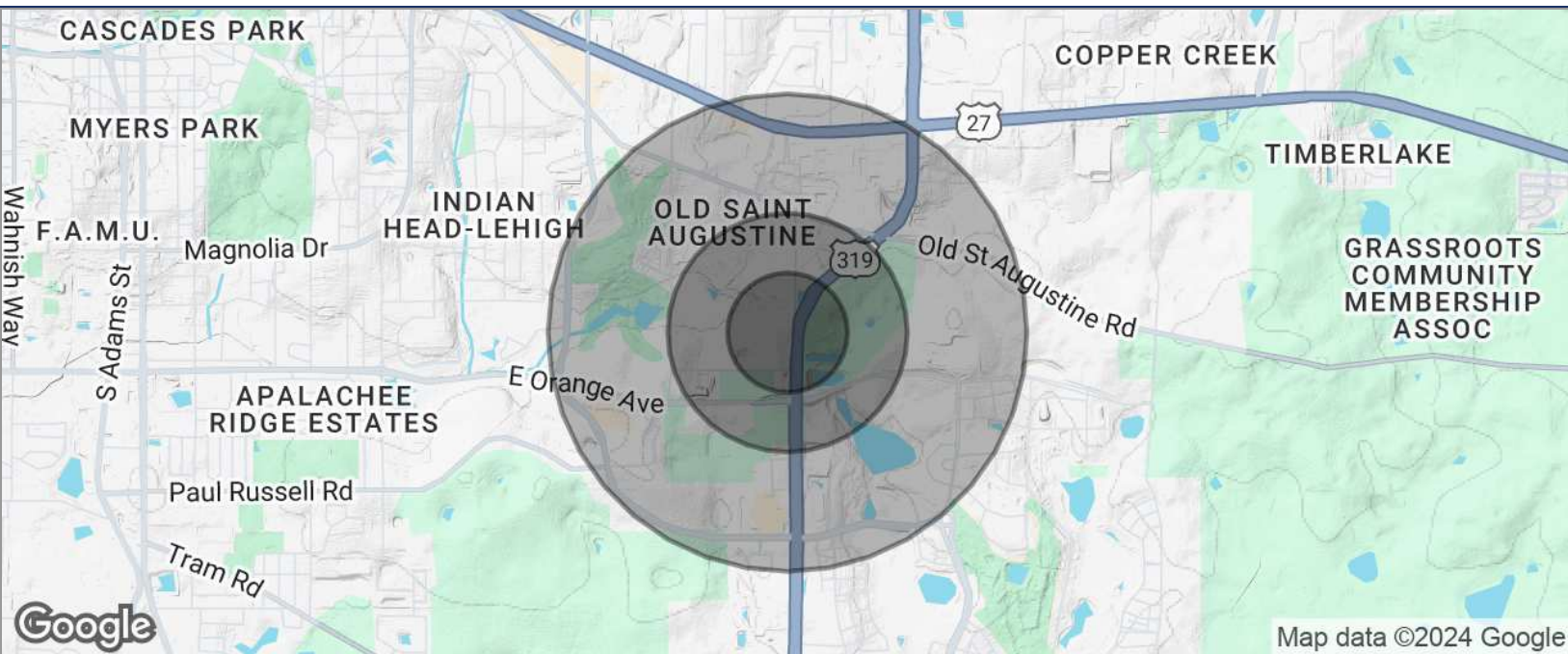




DEMOGRAPHICS MAP

OAKLAND PLAZA

2176 CAPITAL CIRCLE SE, TALLAHASSEE, FL 32301



POPULATION	0.25 MILES	0.5 MILES	1 MILE
TOTAL POPULATION	2,610	3,201	8,526
MEDIAN AGE	20.2	20.4	26.3
MEDIAN AGE (MALE)	14.3	14.9	24.4
MEDIAN AGE (FEMALE)	23.8	23.5	27.0
HOUSEHOLDS & INCOME	0.25 MILES	0.5 MILES	1 MILE
TOTAL HOUSEHOLDS	748	1,526	6,752
# OF PERSONS PER HH	2.8	2.7	2.0
AVERAGE HH INCOME	\$48,332	\$48,319	\$48,433
AVERAGE HOUSE VALUE	\$165,837	\$160,719	\$142,084

* Demographic data derived from 2020 ACS - US Census

Bryan Cureton
850.545.3687
bryan@tlgproperty.com

TLG REAL ESTATE SERVICES
3520 Thomasville Road, Suite 200, Tallahassee, FL 32309
850.385.6363

