

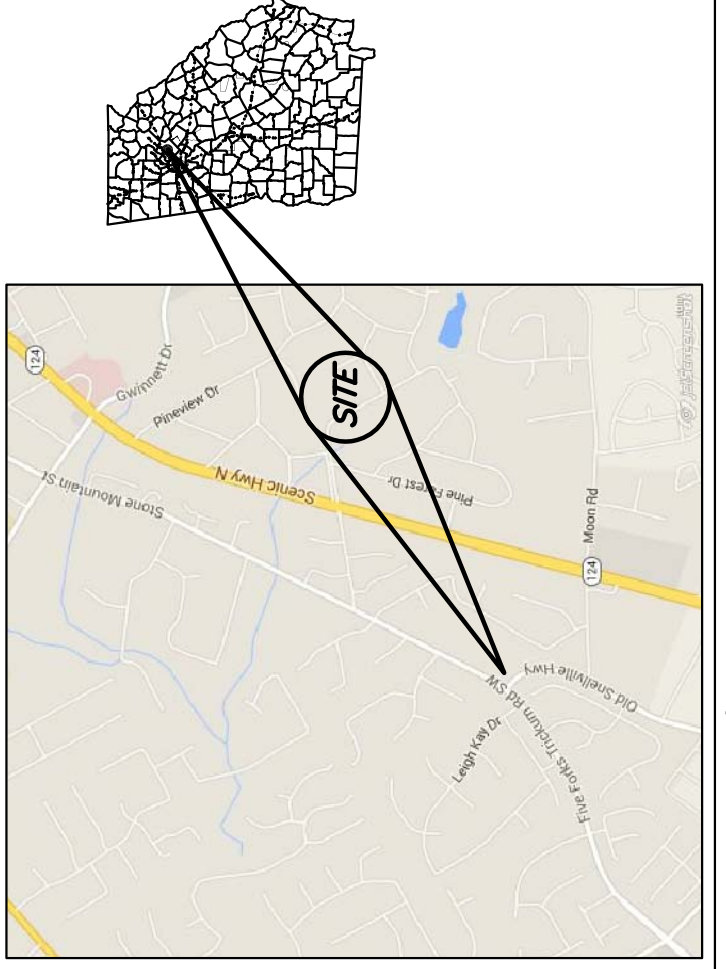
NOTICE TO BUYERS  
 THIS IS A PRELIMINARY PLAT  
 AND SHOULD NOT BE USED FOR  
 CONSTRUCTION OR AS EVIDENCE  
 IN A COURT OF LAW.

**COORDINATE SYSTEM INFORMATION TABLE**

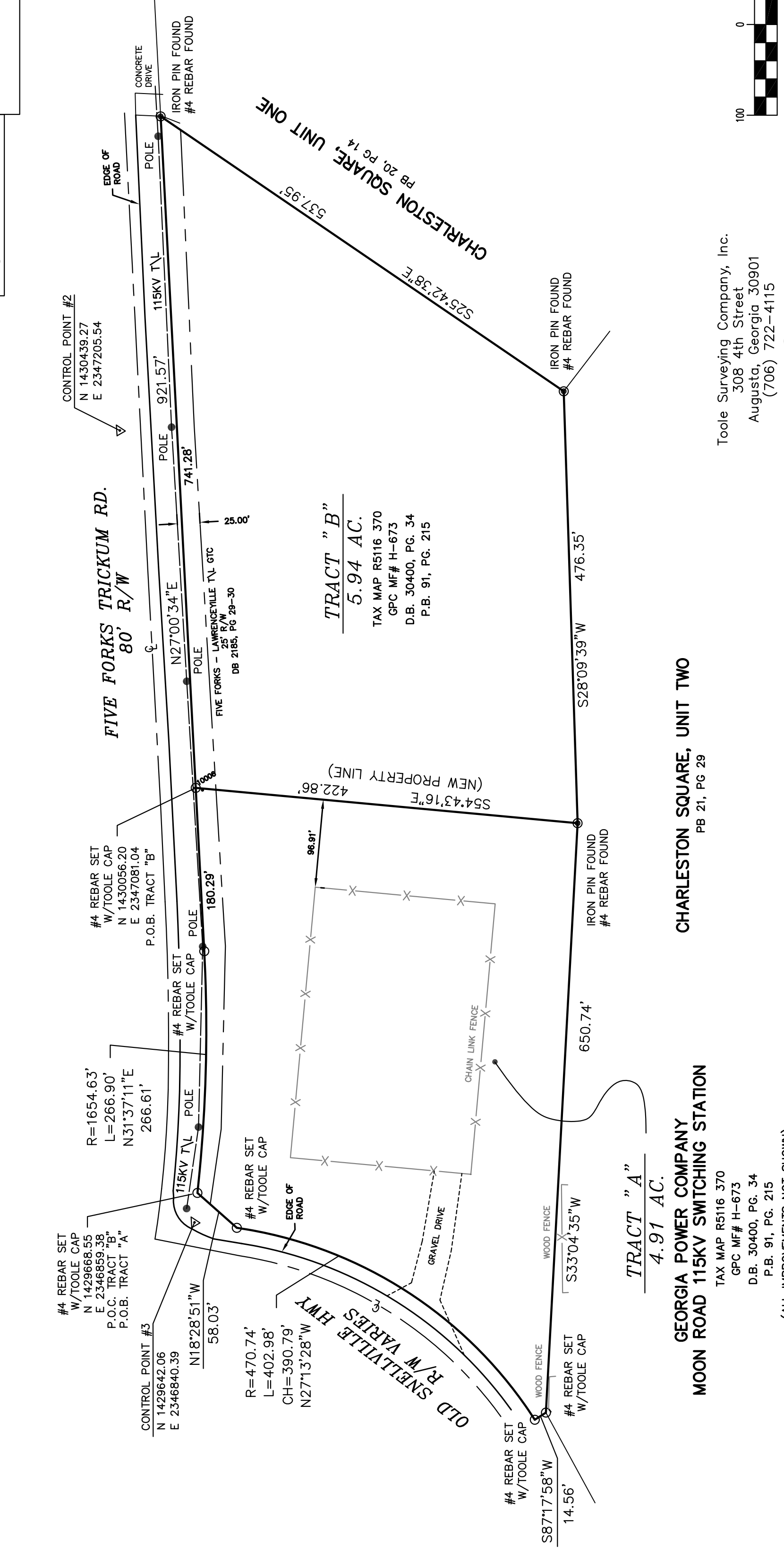
AVERAGE ELEVATION: 1034.24'  
 STATE PLANE AVE. SCALE FACTOR: 0.999902913  
 COMPUTED SEA LEVEL FACTOR: 0.99995324  
 COMBINED FACTOR: 0.999958157  
 GA WEST ZONE NAD83(2011), NAVD (88)

CONTROL	STATE PLANE
CP #2 ELEV = 1038.28	N 1430439.27 E 2347205.54
CP #3 ELEV = 1030.21	N 1429642.06 E 2346840.39

- UTILITY LEGEND**
- Electric Manhole
  - Electric Meter
  - Gas Manhole
  - Gas Valve
  - Gas Meter
  - Sanitary Sewer Manhole
  - Sanitary Sewer Cleanout
  - Storm Sewer Manhole
  - Telephone Manhole
  - Water Manhole
  - Water Valve
  - Water Meter
  - Fire Hydrant
  - Well
  - Power Pole
  - Transmission Tower
  - Guy Wire



- PLAT ABBREVIATIONS**
- IPF - Iron Pin Found
  - IPS - Iron Pin Set
  - FPS - Fence Post Set
  - OTF - Open Top Pipe
  - CTP - Crimp Top Pipe
  - Conc. - Concrete
  - Alum. - Aluminum
  - P/L - Property Line
  - R/W - Right of Way
  - C/L - Centerline
  - F/L - Fenceline
  - T/L - Transmission Line
  - N/F - New or Formerly
  - DB - Deed Book
  - PB - Plat Book
  - MF - Map File No.
  - N.T.S. - Not to Scale
  - P.O.C. - Point of Commencement
  - P.O.B. - Point of Beginning
  - GBH - Geotechnical Bore Hole
  - UGP - Underground Power
  - OHU - Overhead Utilities
  - GPC - Georgia Power Company
- MONUMENTATION LEGEND**
- Iron Pin Set
  - Iron Pin Found
  - Monument Set
  - Monument Found
  - Computed Point
  - Control or Traverse Point
  - Geodetic Control Point
  - Benchmark or Temporary Benchmark (TBM)



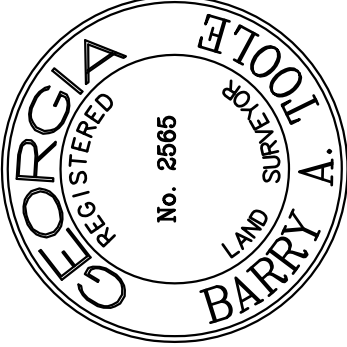
**GEORGIA POWER COMPANY  
 MOON ROAD 115KV SWITCHING STATION**

TAX MAP R5116 370  
 GPC MF# H-673  
 D.B. 30400, PG. 34  
 P.B. 91, PG. 215  
 (ALL IMPROVEMENTS NOT SHOWN)

**CHARLESTON SQUARE, UNIT TWO**

PB 21, PG 29

Toole Surveying Company, Inc.  
 308 4th Street  
 Augusta, Georgia 30901  
 (706) 722-4115



**SURVEY CLOSURE STATEMENT**

The Field Data upon which this plat is based has a closure precision of one foot in 113,451 feet, and an angular error of 2" per angle point, and was adjusted using COMPASS rule.

This plat has been calculated for closure and is found to be accurate within one foot in 3,145,172 feet.

Linear Measurement obtained using NIKON NINO  
 Angular Measurement obtained using NIKON NINO  
 Field Work completed 4/14/16

I certify that this survey was prepared in conformity with The Technical Standards for Property Surveys in Georgia as set forth in Chapter 180-7 of the Rules of the Georgia Board of Registration for Professional Engineers and Land Surveyors and as set forth in the Georgia Plat Act O.C.G.A. 15-6-67. And further certify that according to the Georgia Code Section 15-6-67(D), that this plat is not required to be reviewed by any local governing authorities prior to recording. Per said section, "No approval shall be required if no new streets or roads are created or no new utility improvements are required or no new sanitary sewer or approval of a septic tank is required." No such improvements are required hereon.

**F.I.R.M. FLOOD NOTE:**  
 THIS PROPERTY IS NOT LOCATED IN A 100 YR. F.I.R.M. FLOODPLAIN, (BY GRAPHIC PLOTTING ONLY) ACCORDING TO F.I.R.M. FLOOD MAP OF GWINNETT COUNTY, GA. COMMUNITY-PANEL NO. 13135C0103 F, PANEL 103 of 155, DATED SEPTEMBER 29, 2006.

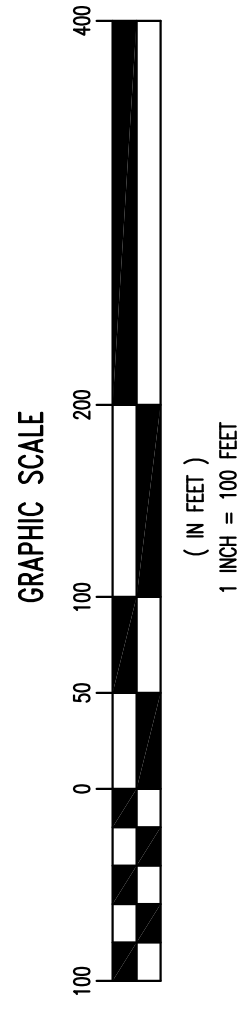
PATH - T: Working2\SUBSTA115KV\20160703\_Moon Road (Sale to GTC).dwg

**GEORGIA POWER CO., ATLANTA, GA.  
 Land Department**

**SUBDIVISION SURVEY FOR:  
 MOON ROAD 115KV SWITCHING STATION  
 (SALE TO GTC)**

LAND LOTS 116, 5th DISTRICT, CITY OF LAWRENCEVILLE, GWINNETT COUNTY, GEORGIA

APPROVALS	DR.	TR.	Checked
5/3/16	WRM	TR.	BAT
5/19/16	GPC REVIEW	SCALE	DATE
		1" = 100'	4/15/16
		REVISION BLOCK	DRAWING NUMBER
			<b>P 413-8</b>



- Notes:**
- The Benchmark control data on which this plat is based was obtained using Global Positioning System (RTK-GPS) with real time corrections provided by EGPS and has a positional uncertainty due to random errors in measurement of 0.05 feet. Equipment used to obtain horizontal and vertical coordinate positions was a Trimble 5700.
  - Distances are ground in US Survey feet.