

# 359

EAST MAIN STREET  
MOUNT KISCO, NY

## MEDICAL OFFICE SUITES AVAILABLE FOR LEASE



DIRECTLY ACROSS FROM NORTHERN WESTCHESTER  
HOSPITAL ON MAIN STREET/ROUTE 117

**RM FRIEDLAND**  
COMMERCIAL REAL ESTATE SERVICES

EXCELLENT VISIBILITY | AMPLE ON-SITE PARKING  
GREAT SIGNAGE OPPORTUNITIES



# 359

EAST MAIN STREET  
MOUNT KISCO, NY

## BUILDING INFORMATION

With over 30,000 square feet of office/medical space, 359 East Main Street is located in the center of Mount Kisco village, directly across from Northern Westchester Hospital.

Building Type	Medical Office
Year Built/Renovated	1962/2006
Building Height	4 Stories
Building Size	30,177 SF
Ceiling Height	10'
Weekend Hours	Sat, 8am-2pm
Parking	Ample

### Availability:

Office - Suite 3A	1,009 RSF
Office - Suite 3G	995 RSF
Office - Suite 4A	1,228 RSF
Office - Suite 4C	421 RSF

Contact Exclusive Listing Agent:

**Frank Savastano**

914.968.8500 x324

[fsavastano@rmfriedland.com](mailto:fsavastano@rmfriedland.com)

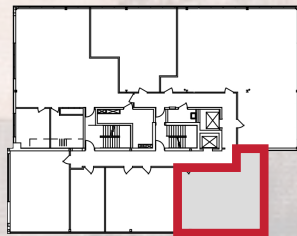
All information contained herein is based upon information which we consider reliable, but because it has been supplied by third parties, we cannot represent that it is accurate or complete, and it should not be relied upon as such. The offerings are subject to errors, omissions, changes, including price, or withdrawal without notice. The content is provided without warranties of any kind, either express or implied. RM Friedland, LLC, its agents or employees shall not be held liable to anyone for any errors, omissions or inaccuracies under any circumstances. You and your advisors should conduct a careful, independent examination of the property to determine to your satisfaction the suitability of the property for your needs.

**RM FRIEDLAND**

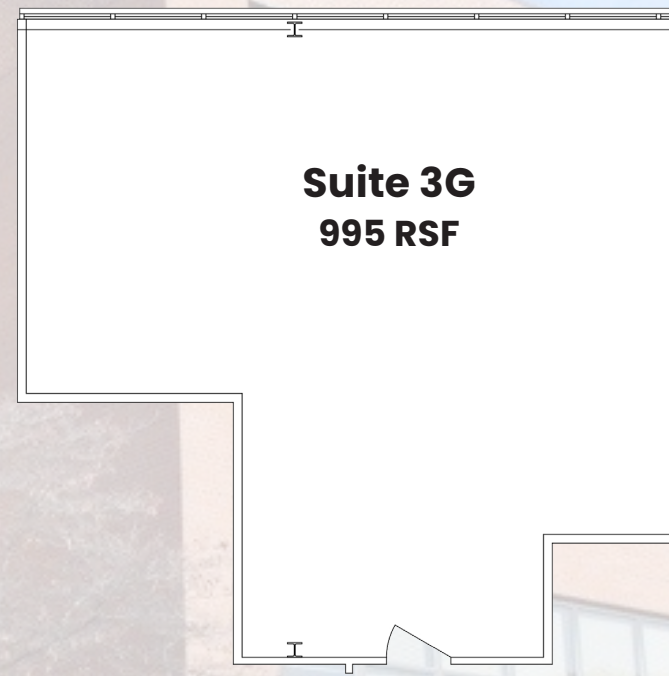
# 359

EAST MAIN STREET  
MOUNT KISCO, NY

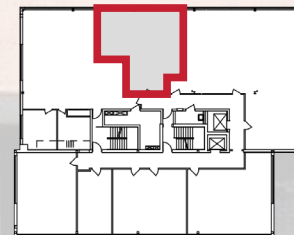
## 3<sup>RD</sup> FLOOR PLANS - OFFICE



**Suite 3A**



**Suite 3G**



Contact Exclusive Listing Agent:

**Frank Savastano**

914.968.8500 x324

[fsavastano@rmfriedland.com](mailto:fsavastano@rmfriedland.com)

**RM FRIEDLAND**

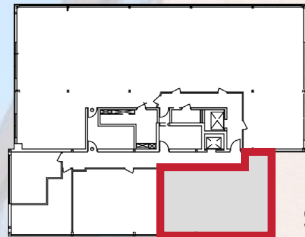
All information contained herein is based upon information which we consider reliable, but because it has been supplied by third parties, we cannot represent that it is accurate or complete, and it should not be relied upon as such. The offerings are subject to errors, omissions, changes, including price, or withdrawal without notice. The content is provided without warranties of any kind, either express or implied. RM Friedland, LLC, its agents or employees shall not be held liable to anyone for any errors, omissions or inaccuracies under any circumstances. You and your advisors should conduct a careful, independent examination of the property to determine to your satisfaction the suitability of the property for your needs.



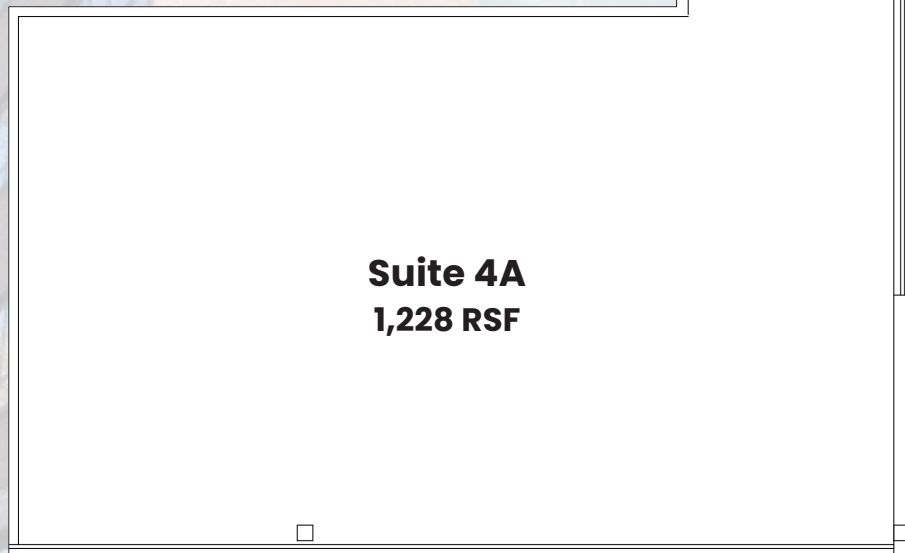
# 359

EAST MAIN STREET  
MOUNT KISCO, NY

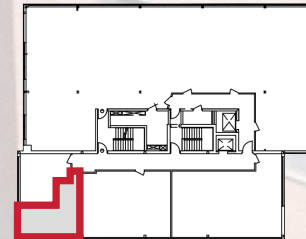
## 4<sup>TH</sup> FLOOR PLANS - OFFICE



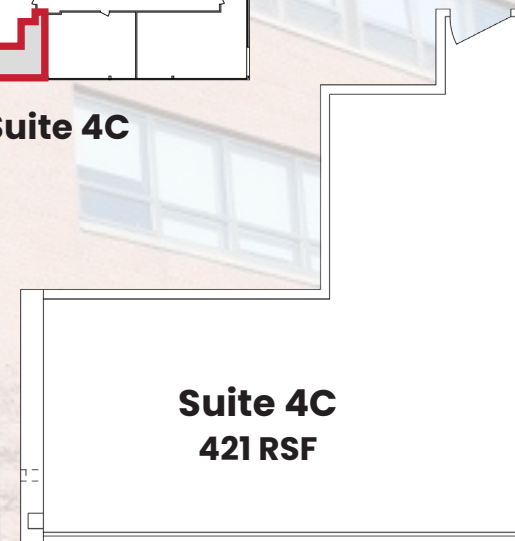
**Suite 4A**



**Suite 4A**  
**1,228 RSF**



**Suite 4C**



**Suite 4C**  
**421 RSF**

Contact Exclusive Listing Agent:

**Frank Savastano**

914.968.8500 x324

[fsavastano@rmfriedland.com](mailto:fsavastano@rmfriedland.com)

All information contained herein is based upon information which we consider reliable, but because it has been supplied by third parties, we cannot represent that it is accurate or complete, and it should not be relied upon as such. The offerings are subject to errors, omissions, changes, including price, or withdrawal without notice. The content is provided without warranties of any kind, either express or implied. RM Friedland, LLC, its agents or employees shall not be held liable to anyone for any errors, omissions or inaccuracies under any circumstances. You and your advisors should conduct a careful, independent examination of the property to determine to your satisfaction the suitability of the property for your needs.

**RM FRIEDLAND**



# 359

EAST MAIN STREET  
MOUNT KISCO, NY

Situated Central To A Broad Range Of Medical,  
Service, Corporate, And Hospitality Neighbors



1.2 miles to Saw Mill River Pkwy  
(Elmsford)



0.9 miles to Metro North  
(Mount Kisco Station)



1 min walk to 0019 Bus

Contact Exclusive Listing Agent:

**Frank Savastano**

914.968.8500 x324

[fsavastano@rmfriedland.com](mailto:fsavastano@rmfriedland.com)

**RM FRIEDLAND**

All information contained herein is based upon information which we consider reliable, but because it has been supplied by third parties, we cannot represent that it is accurate or complete, and it should not be relied upon as such. The offerings are subject to errors, omissions, changes, including price, or withdrawal without notice. The content is provided without warranties of any kind, either express or implied. RM Friedland, LLC, its agents or employees shall not be held liable to anyone for any errors, omissions or inaccuracies under any circumstances. You and your advisors should conduct a careful, independent examination of the property to determine to your satisfaction the suitability of the property for your needs.