



AVAILABLE FOR LEASE
801 COOPERTOWN ROAD
DELANCO, NEW JERSEY

4,018± SF INDUSTRIAL BUILDING

IOS
AVAILABLE
0.35 ACRE
ADJACENT
OUTSIDE
STORAGE

IDEAL FOR CONTRACTORS, LIGHT MANUFACTURING, R&D, AND SERVICE-BASED INDUSTRIES

- 16' clear height
- One (1) oversized drive in door
- Conditioned offices and heated warehouse
- Immediately available

CONTACT
SANDRO RANDAZZO
+1 856 724 4256
sandro.randazzo@naimertz.com

NAIMertz

PROPERTY PHOTOS

801 COOPERTOWN ROAD DELANCO, NJ



CONTACT

SANDRO RANDAZZO

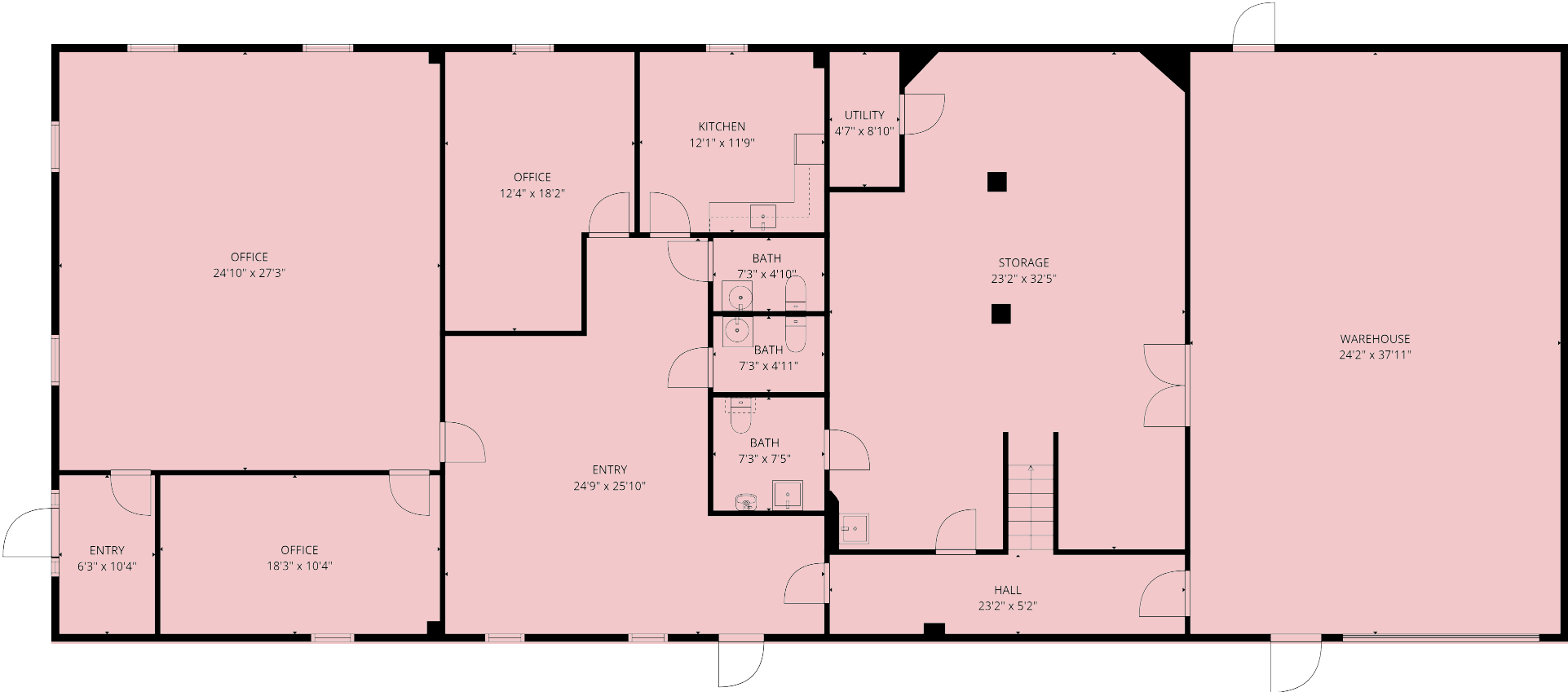
+1 856 724 4256

sandro.randazzo@naimertz.com



FLOORPLAN

801 COOPERTOWN ROAD DELANCO, NJ



CONTACT

SANDRO RANDAZZO

+1 856 724 4256

sandro.randazzo@naimertz.com



LOCATION INFORMATION

801 COOPERTOWN ROAD DELANCO, NJ



DISTANCE TO:

Route 130	1.7 mi
Burlington-Bristol Bridge	6.5 mi
I-295 (Exit 45)	6.6 mi
Route 73	7.1 mi
Tacony-Palmyra Bridge	7.1 mi
NJ Turnpike (Exit 5)	8.8 mi
I-95	9.0 mi
Betsy Ross Bridge	9.8 mi

16.5 MILES
TO CENTER CITY PHILADELPHIA

CONTACT

SANDRO RANDAZZO

+1 856 724 4256

sandro.randazzo@naimertz.com

