

EAGLE PLAZA
4505 S. Wasatch Blvd.
Millcreek, Utah 84124



Eagle Plaza

**4505 S. WASATCH BLVD.
MILLCREEK, UT 84124**

For Lease
\$21.50/SF/Year
Full Service

Property Highlights

- 747 RSF available
- 4/1,000 parking ratio
- Beautiful mountain and valley views
- Easy access from I-215
- Close proximity to nearby amenities
- Large shared kitchen available to all tenants

For information, please contact:

Casey Mills, CCIM, SIOR
Managing Director
t 801-578-5556
casey.mills@nmrk.com

Derek Sawaya
Director
t 801-746-4730
derek.sawaya@nmrk.com

nmrk.com

NEWMARK

The information contained herein has been obtained from sources deemed reliable but has not been verified and no guarantee, warranty or representation, either express or implied, is made with respect to such information. Terms of sale or lease and availability are subject to change or withdrawal without notice.

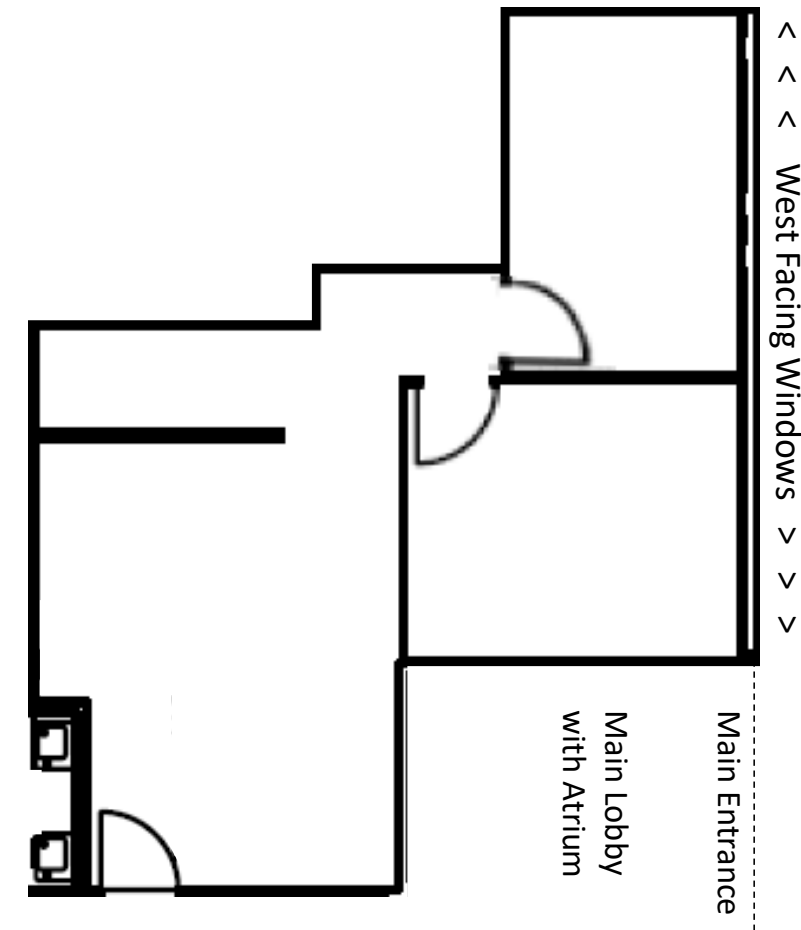
For information, please contact:

Casey Mills, CCIM, SIOR
Managing Director
t 801-578-5556
casey.mills@nmrk.com

Derek Sawaya
Director
t 801-746-4730
derek.sawaya@nmrk.com

NEWMARK

nmrk.com



Suite 222
747 RSF
615 USF
Available 9/1/2021

All square footage numbers are as provided by landlord. Although we believe these numbers to be accurate, tenant is responsible for verifying this information.