

# For Sale | Industrial

## 70 Remington Blvd, Ronkonkoma, NY



Building Size: 8,071 sf  $\pm$   
Lot Size: 0.55 acres  $\pm$   
Offices: 41%  $\pm$   
Ceiling Height: 16' 8"  $\pm$   
Drive-ins: 3 Drive-Ins  
Docks: 1 filled in; new owner can open up  
Heat: Gas  
Power (2 Services): A)  $\pm$ 400 amps  
B)  $\pm$ 200 amps

Asking Sale Price: \$2,600,000  
Taxes: \$ 24,862.04 / year  $\pm$

- Zoned Industrial 1, Town of Islip
- Renovated in 2006
- 1 Row of Columns in Warehouse
- Can be delivered with tenant in  $\pm$ 3,000 sf paying \$3,250/month
- Solar Panels on Roof
- Skylights
- Additional mezzanine storage not included in footage
- Roof Hatch in Warehouse
- Security System / Camera's Throughout
- Built in 1979



201 Moreland Road, Ste 4, Hauppauge, NY 11788  
(631) 770-0700 ~ [info@metrorealtyservices.com](mailto:info@metrorealtyservices.com)  
[www.metrorealtyservices.com](http://www.metrorealtyservices.com)

### **Exclusive Agent:**

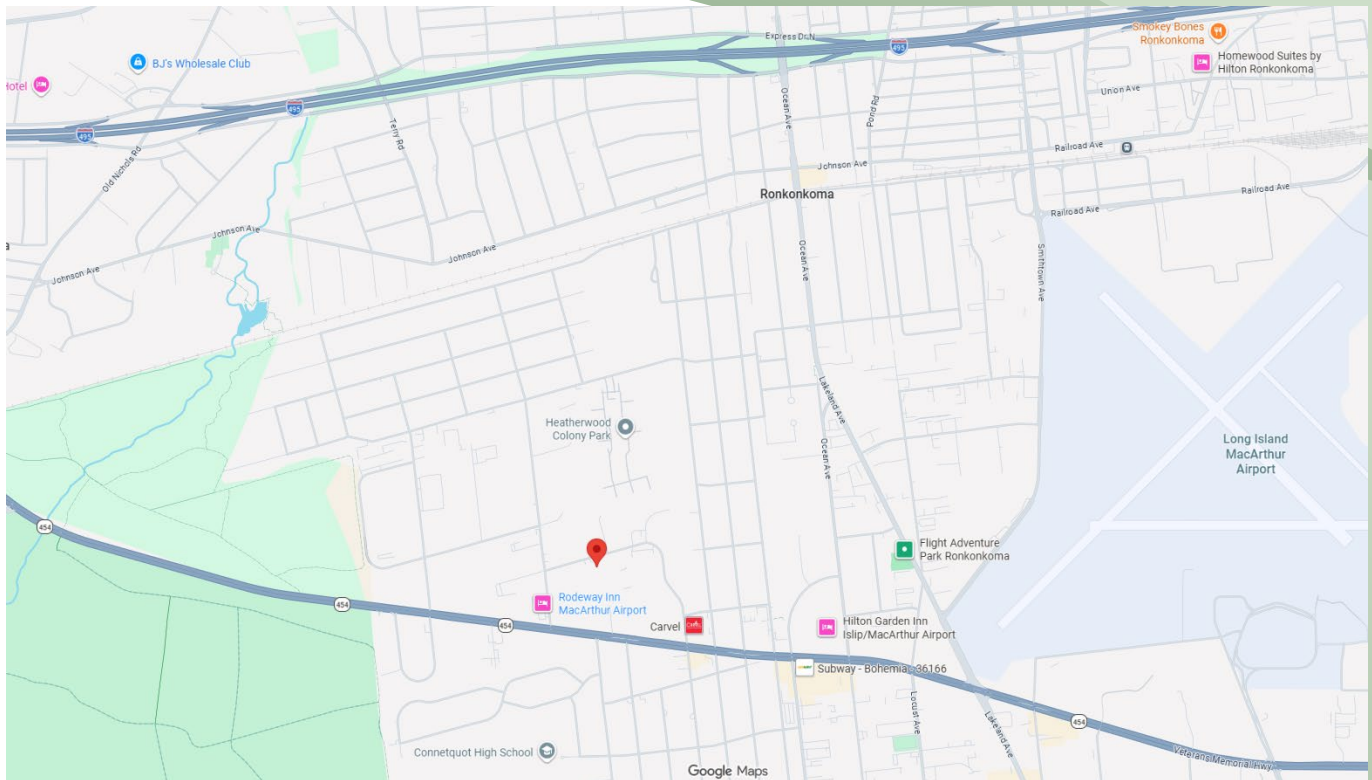
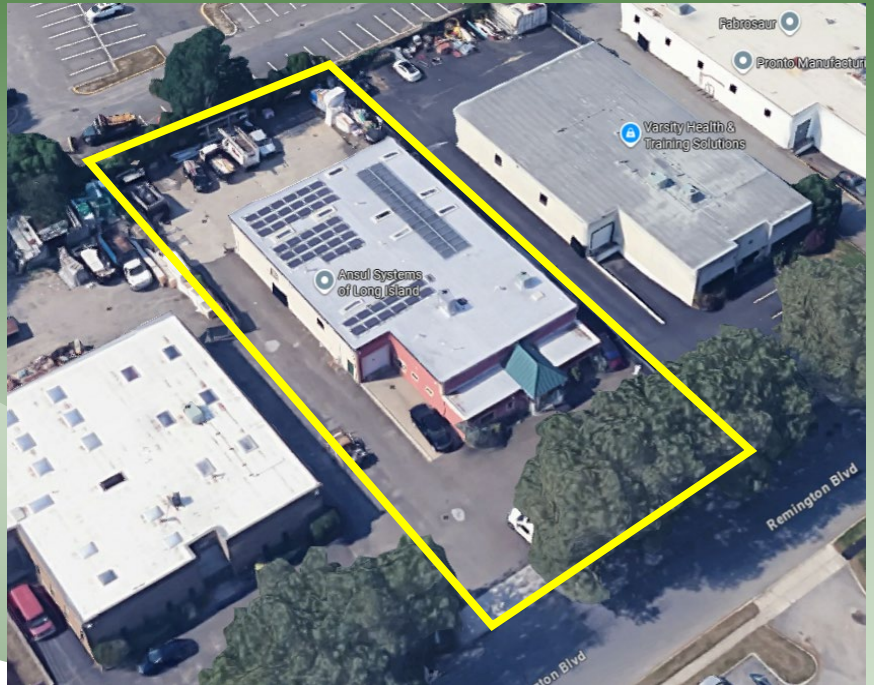
Jeremy D. Hackett  
Licensed Real Estate Broker  
Managing Partner  
Cell: [\(516\) 456-0108](tel:(516)456-0108)  
[jeremy@metrorealtyservices.com](mailto:jeremy@metrorealtyservices.com)

Modified: 2/5/2026

All information submitted is subject to errors, omissions, change of price or rental, change of other terms and conditions, prior sale, lease, financing or withdrawal without notice. All areas and dimensions are approximate. This advertisement does not suggest that the broker has a listing on this property or properties or that any property is currently available.

# For Sale | Industrial

## 70 Remington Blvd, Ronkonkoma, NY



# METRO

REALTY SERVICES LLC

201 Moreland Road, Ste 4, Hauppauge, NY 11788

(631) 770-0700 ~ [info@metrorealtyservices.com](mailto:info@metrorealtyservices.com)

[www.metrorealtyservices.com](http://www.metrorealtyservices.com)

### **Exclusive Agent:**

Jeremy D. Hackett

Licensed Real Estate Broker

Managing Partner

Cell: [\(516\) 456-0108](tel:(516)456-0108)

[jeremy@metrorealtyservices.com](mailto:jeremy@metrorealtyservices.com)

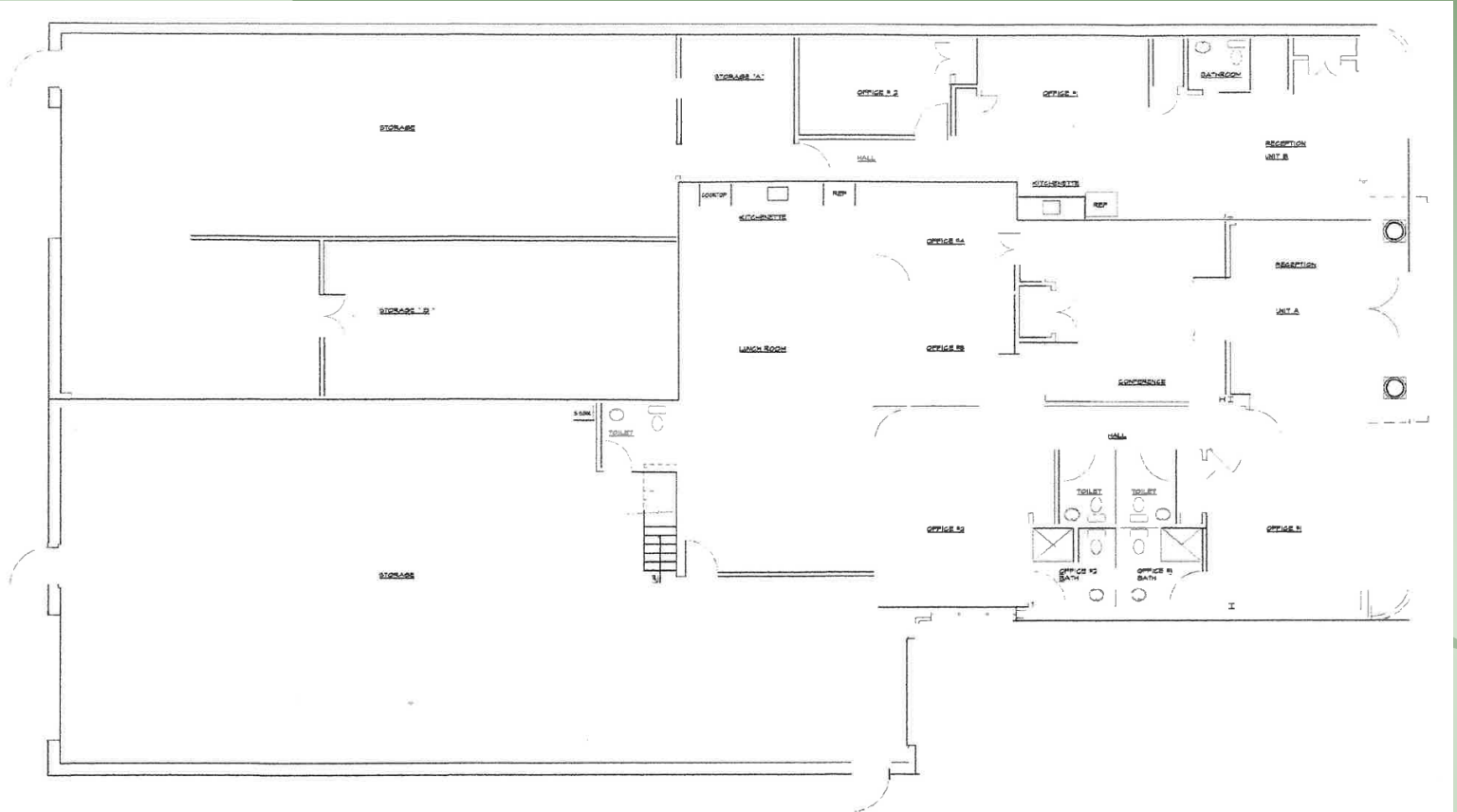
Modified: 2/5/2026

All information submitted is subject to errors, omissions, change of price or rental, change of other terms and conditions, prior sale, lease, financing or withdrawal without notice. All areas and dimensions are approximate. This advertisement does not suggest that the broker has a listing on this property or properties or that any property is currently available.



# For Sale | Industrial

## 70 Remington Blvd, Ronkonkoma, NY



201 Moreland Road, Ste 4, Hauppauge, NY 11788  
(631) 770-0700 ~ [info@metrorealtyservices.com](mailto:info@metrorealtyservices.com)  
[www.metrorealtyservices.com](http://www.metrorealtyservices.com)

### **Exclusive Agent:**

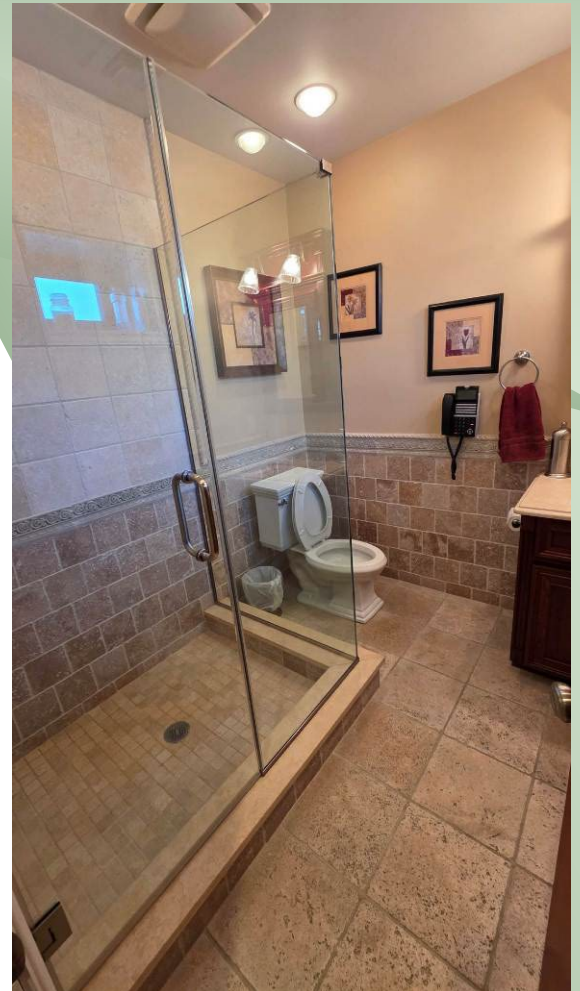
Jeremy D. Hackett  
Licensed Real Estate Broker  
Managing Partner  
Cell: [\(516\) 456-0108](tel:5164560108)  
[jeremy@metrorealtyservices.com](mailto:jeremy@metrorealtyservices.com)

Modified: 2/5/2026

All information submitted is subject to errors, omissions, change of price or rental, change of other terms and conditions, prior sale, lease, financing or withdrawal without notice. All areas and dimensions are approximate. This advertisement does not suggest that the broker has a listing on this property or properties or that any property is currently available.

# For Sale | Industrial

## 70 Remington Blvd, Ronkonkoma, NY



# METRO

REALTY SERVICES LLC

201 Moreland Road, Ste 4, Hauppauge, NY 11788

(631) 770-0700 ~ [info@metrorealtyservices.com](mailto:info@metrorealtyservices.com)

[www.metrorealtyservices.com](http://www.metrorealtyservices.com)

### **Exclusive Agent:**

Jeremy D. Hackett

Licensed Real Estate Broker

Managing Partner

Cell: [\(516\) 456-0108](tel:5164560108)

[jeremy@metrorealtyservices.com](mailto:jeremy@metrorealtyservices.com)

Modified: 2/5/2026

All information submitted is subject to errors, omissions, change of price or rental, change of other terms and conditions, prior sale, lease, financing or withdrawal without notice. All areas and dimensions are approximate. This advertisement does not suggest that the broker has a listing on this property or properties or that any property is currently available.