
HIGHLY VISIBLE RESTAURANT BUILDING NEAR JMU

1007 South Main Street, Harrisonburg, VA 22801

Executive Summary



OFFERING SUMMARY

Lease Rate:	\$16.15 PSF/Yr Triple Net
Lot Size:	0.35 Acres
Building Size:	4,458 SF
Zoning:	B2
Utilities:	Public Water Public Sewer Natural Gas
Traffic Counts:	23,000+ AADT S Main Street
MLS#:	665382



PROPERTY OVERVIEW

This highly visible, 4,458 square foot NNN leased building offers unparalleled foot and vehicular traffic in the bustling heart of James Madison University. Situated on a well-lit intersection on Main Street, with thousands of cars passing daily and thousands of students accessing the adjacent parking garage, this property enjoys an unbeatable location. Previously home to popular establishments like Buffalo Wild Wings and JM's, the building is currently occupied by Taco and Tequila. Property has two parking areas, large pylon road fronting sign, well maintained and low maintenance brick exterior. Prime for another restaurant, bank, bar, coffee shop or c-store. Property could also be available for ground lease, lease or build to suit, call agent for more info. Don't miss this opportunity to own a thriving property in the heart of JMU.

For More Information:

Craig Anders
540.383.6054
craig.anders@cottonwood.com

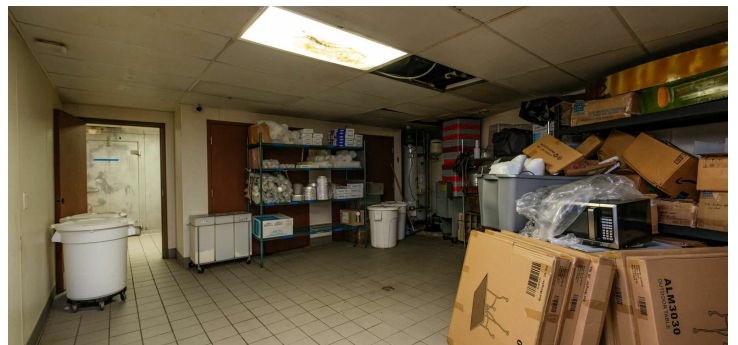
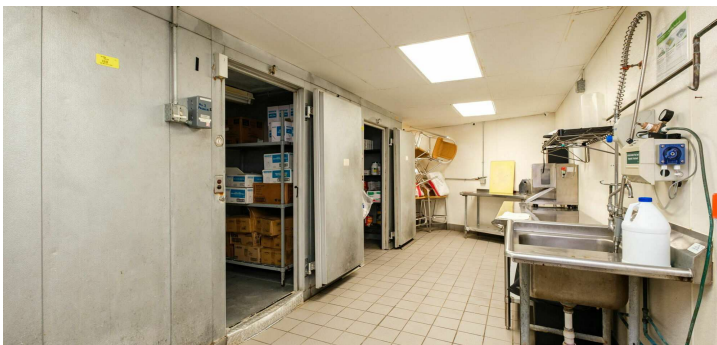
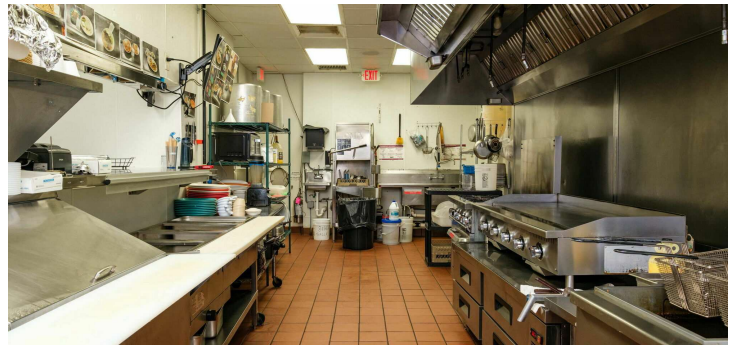
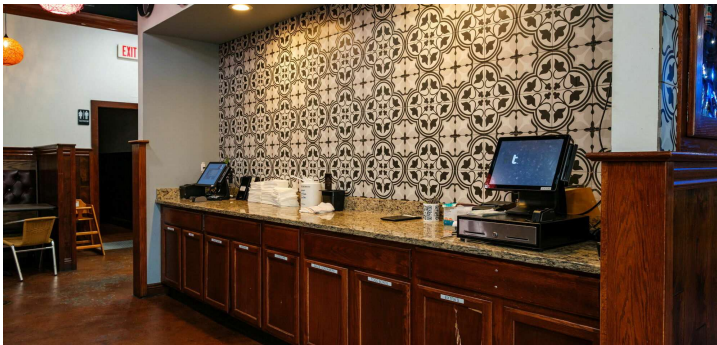
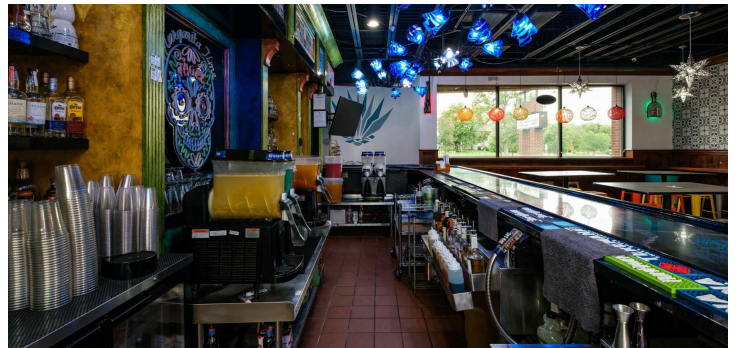
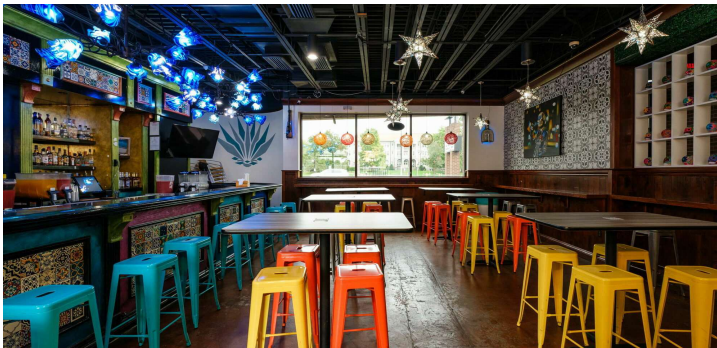
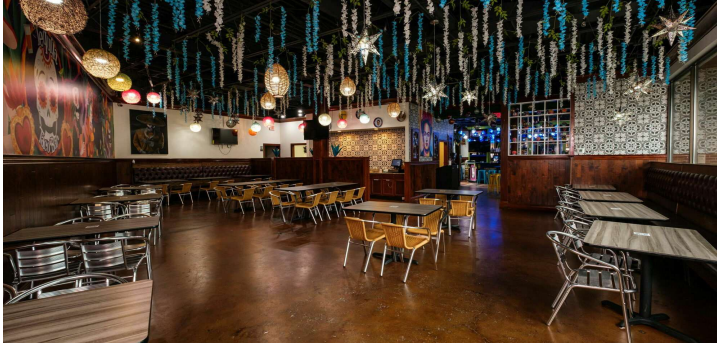
COTTONWOOD
COMMERCIAL
A COMMERCIAL REAL ESTATE BROKERAGE

We obtained the information above from sources we believe to be reliable. However, we have not verified its accuracy and make no guarantee, warranty or representation about it. It is submitted subject to the possibility of errors, omissions, change of price, rental or other conditions, prior sale, lease or financing, or withdrawal without notice. We include projections, opinions, assumptions or estimates for example only, and they may not represent current or future performance of the property. You and your tax and legal advisors should conduct your own investigation of the property and transaction.

HIGHLY VISIBLE RESTAURANT BUILDING NEAR JMU

1007 South Main Street, Harrisonburg, VA 22801

Interior Photos



For More Information:

Craig Anders

540.383.6054

craig.anders@cottonwood.com

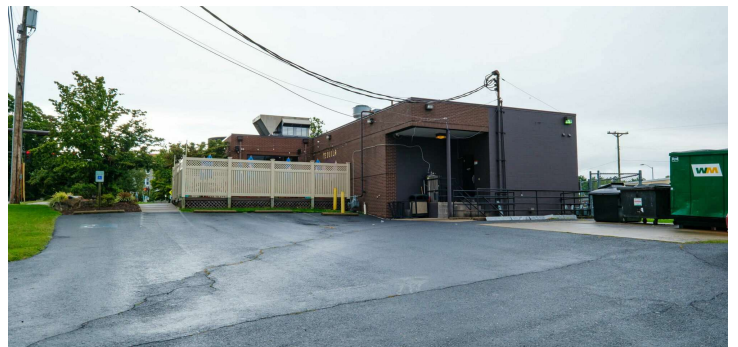
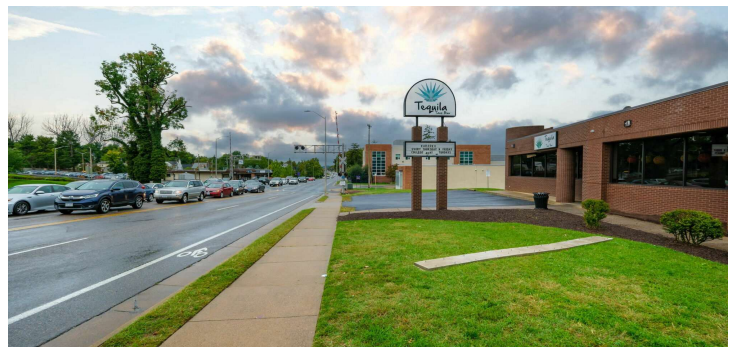
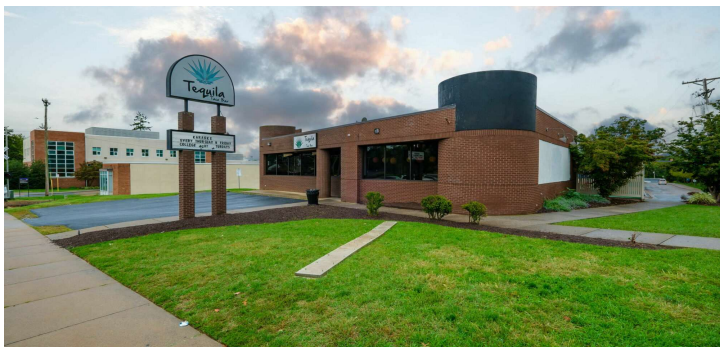
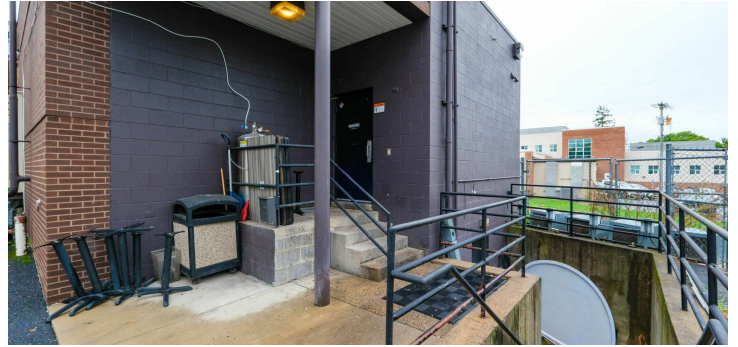
COTTONWOOD
COMMERCIAL
A COMMERCIAL REAL ESTATE BROKERAGE

We obtained the information above from sources we believe to be reliable. However, we have not verified its accuracy and make no guarantee, warranty or representation about it. It is submitted subject to the possibility of errors, omissions, change of price, rental or other conditions, prior sale, lease or financing, or withdrawal without notice. We include projections, opinions, assumptions or estimates for example only, and they may not represent current or future performance of the property. You and your tax and legal advisors should conduct your own investigation of the property and transaction.

HIGHLY VISIBLE RESTAURANT BUILDING NEAR JMU

1007 South Main Street, Harrisonburg, VA 22801

Exterior Photos



For More Information:

Craig Anders

540.383.6054

craig.anders@cottonwood.com

COTTONWOOD
COMMERCIAL
A COMMERCIAL REAL ESTATE BROKERAGE

We obtained the information above from sources we believe to be reliable. However, we have not verified its accuracy and make no guarantee, warranty or representation about it. It is submitted subject to the possibility of errors, omissions, change of price, rental or other conditions, prior sale, lease or financing, or withdrawal without notice. We include projections, opinions, assumptions or estimates for example only, and they may not represent current or future performance of the property. You and your tax and legal advisors should conduct your own investigation of the property and transaction.

HIGHLY VISIBLE RESTAURANT BUILDING NEAR JMU

1007 South Main Street, Harrisonburg, VA 22801

Aerial Photos



For More Information:

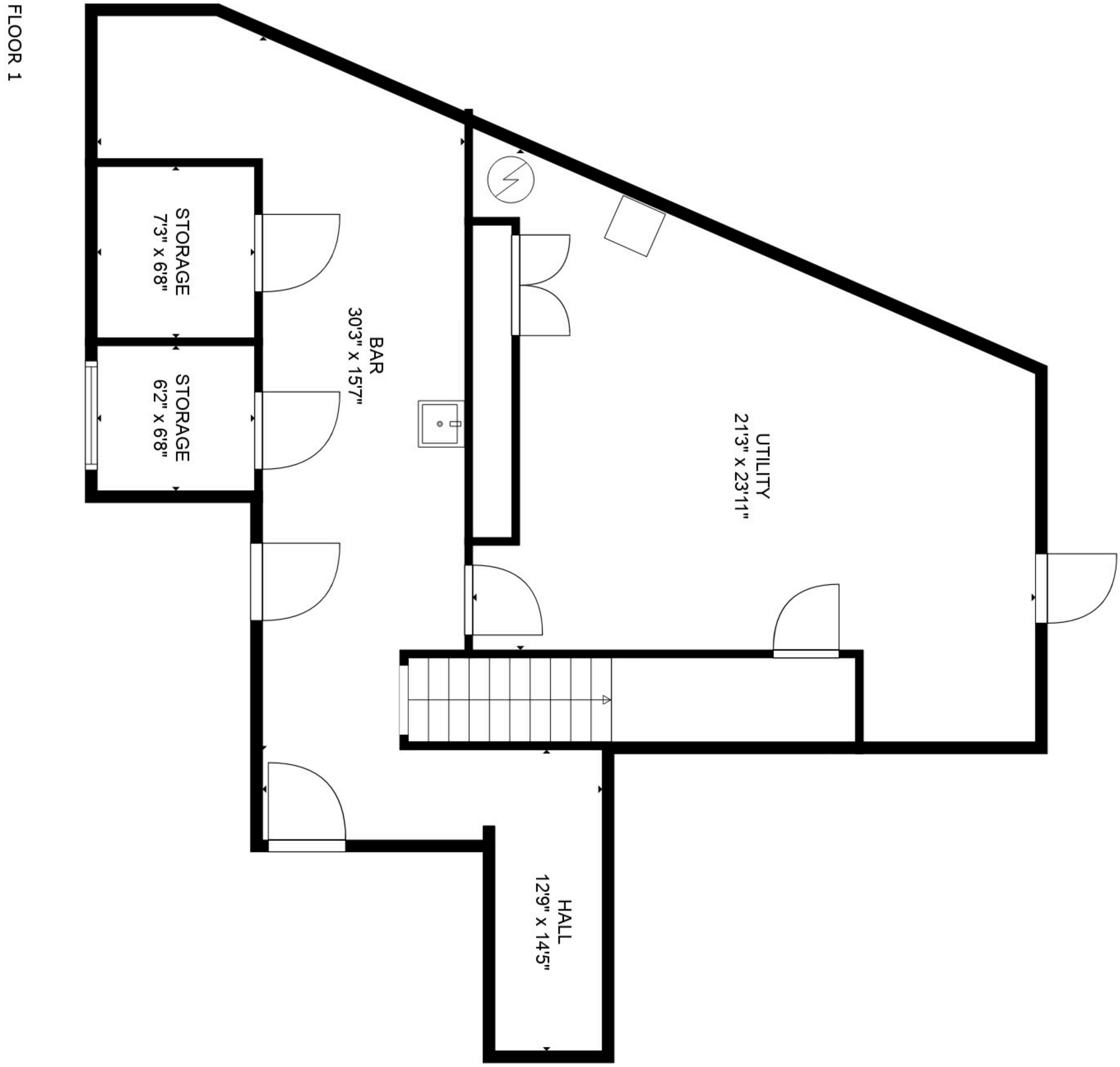
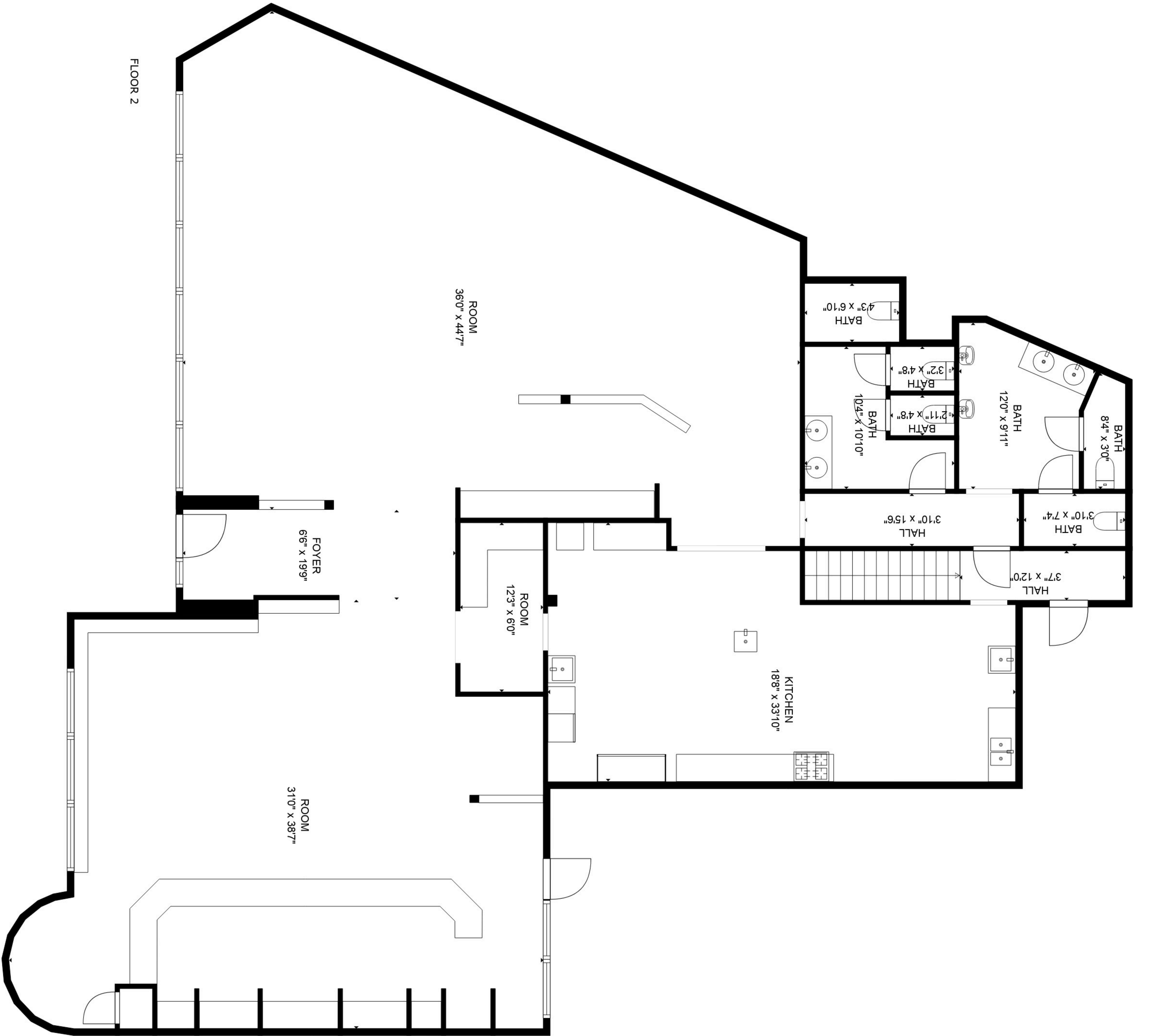
Craig Anders

540.383.6054

craig.anders@cottonwood.com

COTTONWOOD
COMMERCIAL
A COMMERCIAL REAL ESTATE BROKERAGE

We obtained the information above from sources we believe to be reliable. However, we have not verified its accuracy and make no guarantee, warranty or representation about it. It is submitted subject to the possibility of errors, omissions, change of price, rental or other conditions, prior sale, lease or financing, or withdrawal without notice. We include projections, opinions, assumptions or estimates for example only, and they may not represent current or future performance of the property. You and your tax and legal advisors should conduct your own investigation of the property and transaction.

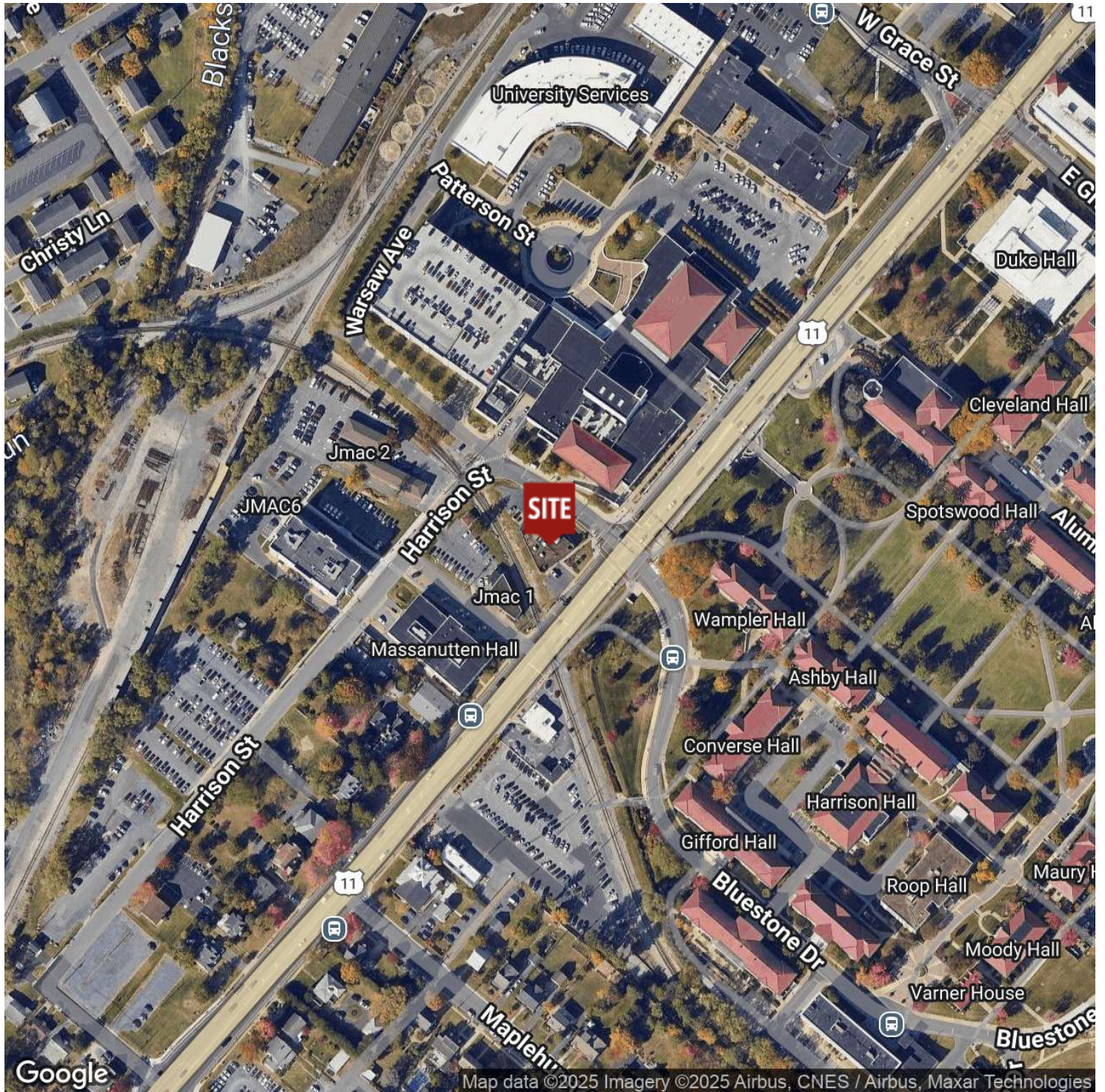


TOTAL: 4458 sq. ft
BELOW GROUND: 899 sq. ft, FLOOR 2: 3559 sq. ft
EXCLUDED AREAS: STORAGE: 93 sq. ft

HIGHLY VISIBLE RESTAURANT BUILDING NEAR JMU

1007 South Main Street, Harrisonburg, VA 22801

Location Map



For More Information:

Craig Anders

540.383.6054

craig.anders@cottonwood.com

COTTONWOOD
COMMERCIAL
A COMMERCIAL REAL ESTATE BROKERAGE

We obtained the information above from sources we believe to be reliable. However, we have not verified its accuracy and make no guarantee, warranty or representation about it. It is submitted subject to the possibility of errors, omissions, change of price, rental or other conditions, prior sale, lease or financing, or withdrawal without notice. We include projections, opinions, assumptions or estimates for example only, and they may not represent current or future performance of the property. You and your tax and legal advisors should conduct your own investigation of the property and transaction.