

architect :: tory stephen  
california registration: c28854  
hawaii registration: ar17392  
north carolina registration: 10226  
michigan registration: 1301066386  
18525 bert road, apt b  
riverside, ca 92508  
tory@thestephengroupinc.com  
828.713.5707

Copyright © 2020 tory stephen,  
architect. These drawings are the  
property of tory stephen and shall  
not be used for any other project  
unless with express written consent  
of tory stephen, architect.

Project Location:  
Lot: 0473-081-05  
18856 Highway 18  
Apple Valley CA

ADC, Inc.  
3900 Sherman Drive  
Riverside CA 92503  
888-774-5831

Construction Documents:  
Date: 1-1-2020  
18MAR21 REV



ELEVATIONS

a3.1

ELEVATION NOTES:

- E.01 TRADITIONAL SAND FINISH STUCCO. SEE SHEET A21 FOR INSTALLATION SPECIFICATION. STUCCO SUBCONTRACTOR SHALL SUBMIT MANUFACTURER'S PRODUCT SPECIFICATIONS PRIOR TO ORDERING ANY MATERIALS, TYP.
- E.02 STUCCO FINISHED EQUIPMENT SCREEN TO MATCH BUILDING STUCCO FINISH, TYP.
- E.03 KAWNEER ALUMINUM WINDOW FRAME SYSTEM DARK BRONZE #40 (OR EQ.) & PPG SOLARBAN TONAL (2) SOLARBGRAY + CLEAR 1" COMPOSITE THICKNESS (OR EQ.), INSTALLED PER MANUFACTURER'S REQUIREMENTS. SUBCONTRACTOR SHALL SUBMIT MANUFACTURER'S PRODUCT SPECIFICATIONS AND COLOR SELECTION PRIOR TO ORDERING ANY MATERIALS, TYP.
- E.04 PAINTED HOLLOW METAL DOOR AND FRAME, TYP.
- E.05 ROOF DRAIN & OVERFLOW DOWN SPOUT NOZZLE W/ DRIP DIVERTER, POLISHED BRONZE - ZURN Z999 OR EQUAL, TYP.
- E.06 CULTURED STONE VENEER - MANUFACTURED BY "CULTURED STONE" PRO-FIT ALPINE LEDGE STONE - LAMBER CREEK, INSTAL PER MANUFACTURER'S REQUIREMENTS, TYP.
- E.07 6"x12" FOAM BASE CORNICE MOLDING BY ADVANCED FOAM, INC., 1745 W. 154TH ST., GARDENA, CA 90249, advancedfoam.com, INSTALLED PER MANUFACTURE REQUIREMENTS, TYP.

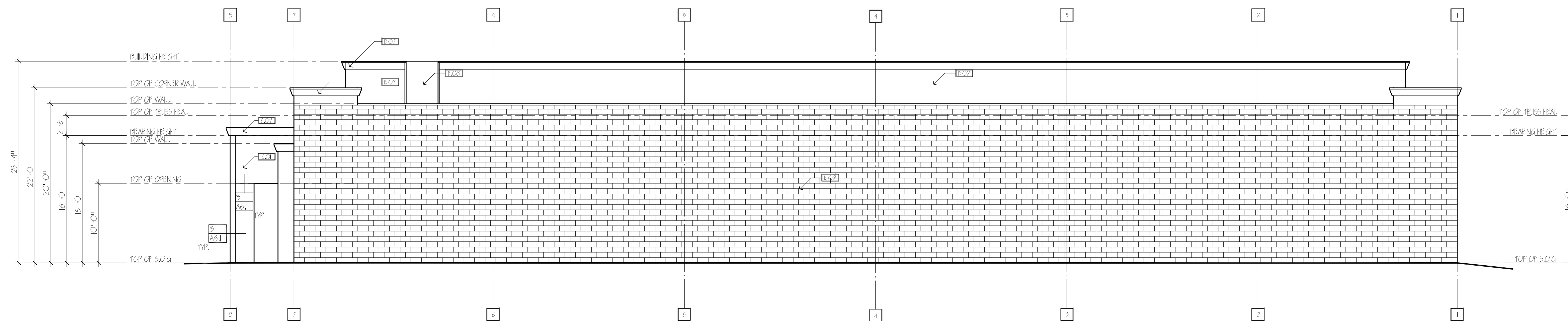


FRONT DOOR ELEVATION - NORTH

SCALE: 1/8" = 1'-0"

ELEVATION NOTES:

- E.01 TRADITIONAL SAND FINISH STUCCO. SEE SHEET A21 FOR INSTALLATION SPECIFICATION. STUCCO SUBCONTRACTOR SHALL SUBMIT MANUFACTURER'S PRODUCT SPECIFICATIONS PRIOR TO ORDERING ANY MATERIALS, TYP.
- E.02 STUCCO FINISHED EQUIPMENT SCREEN TO MATCH BUILDING STUCCO FINISH, TYP.
- E.03 KAWNEER ALUMINUM WINDOW FRAME SYSTEM DARK BRONZE #40 (OR EQ.) & PPG SOLARBAN TONAL (2) SOLARBGRAY + CLEAR 1" COMPOSITE THICKNESS (OR EQ.), INSTALLED PER MANUFACTURER'S REQUIREMENTS. SUBCONTRACTOR SHALL SUBMIT MANUFACTURER'S PRODUCT SPECIFICATIONS AND COLOR SELECTION PRIOR TO ORDERING ANY MATERIALS, TYP.
- E.04 PAINTED HOLLOW METAL DOOR AND FRAME, TYP.
- E.05 ROOF DRAIN & OVERFLOW DOWN SPOUT NOZZLE W/ DRIP DIVERTER, POLISHED BRONZE - ZURN Z999 OR EQUAL, TYP.
- E.06 CULTURED STONE VENEER - MANUFACTURED BY "CULTURED STONE" PRO-FIT ALPINE LEDGE STONE - LAMBER CREEK, INSTAL PER MANUFACTURER'S REQUIREMENTS, TYP.
- E.07 6"x12" FOAM BASE CORNICE MOLDING BY ADVANCED FOAM, INC., 1745 W. 154TH ST., GARDENA, CA 90249, advancedfoam.com, INSTALLED PER MANUFACTURE REQUIREMENTS, TYP.



RIGHT SIDE ELEVATION - WEST

SCALE: 1/8" = 1'-0"