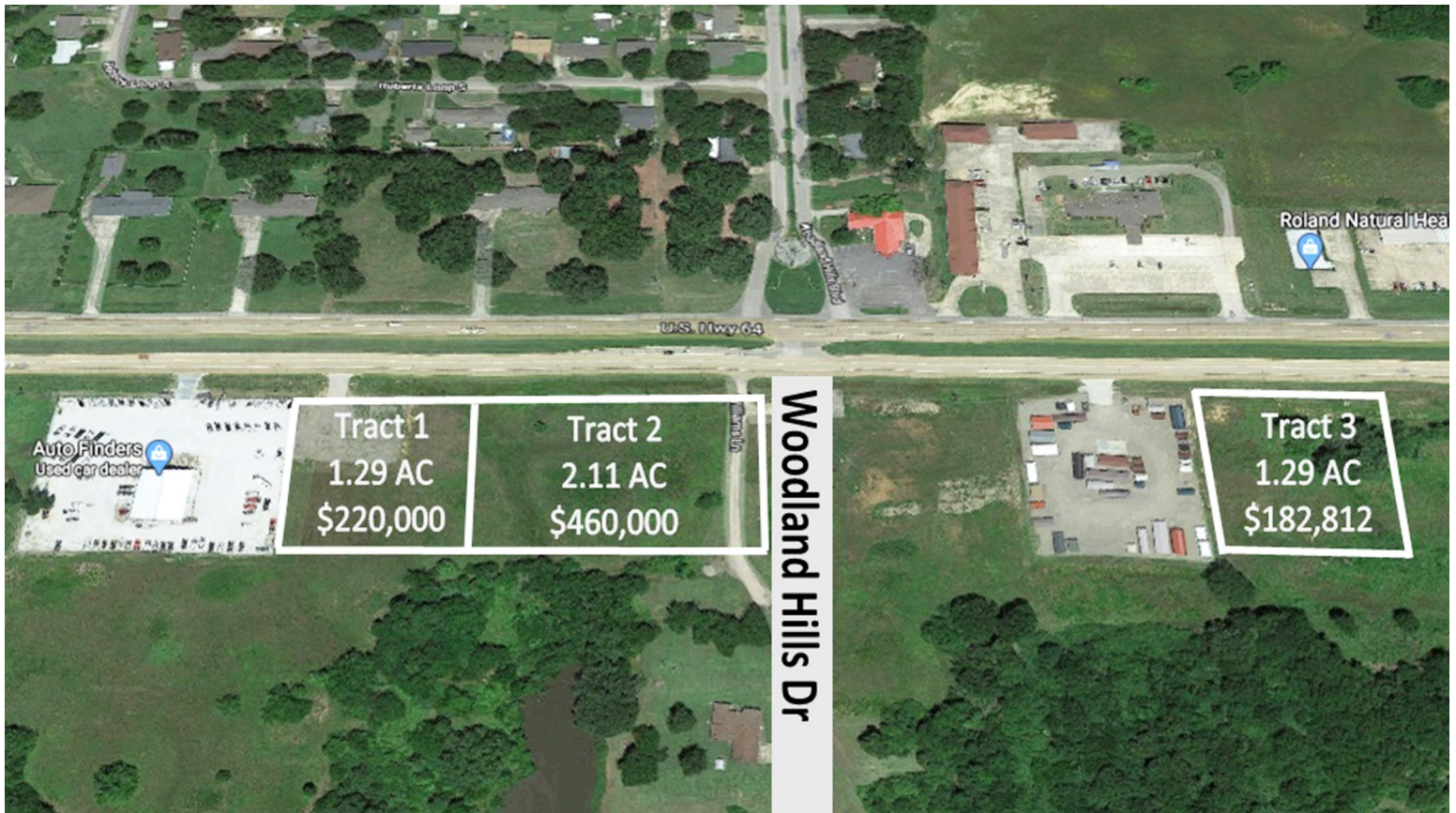


FOR SALE

224 E. Ray Fine Blvd
Roland, OK 74954



Tract 1: Lot with 1.29 acre. Sewer at southeast corner. Dirt work and driveway installed. \$220,000, measures 225'x250'.

Tract 2: Lot with 2.11 acres. Sewer at property. Located at new Woodland Hills Drive with easy out at intersection. \$460,000

Tract 3: Lot with 1.29 acre. Sewer at property. \$182,812, measures 225'x250'.

Properties located on the southside of Highway 64/Ray Fine Boulevard in Roland, Oklahoma.

**SEITER &
WRIGHT**
COMMERCIAL PROPERTIES
3307 OLD GREENWOOD RD, STE A - FT SMITH, AR

"Commercial Real Estate Sales, Leasing, Property Management, and Development"



For more information please

Jackson Mendenhall, CCIM

Associate Broker

479-785-4343

jackson@seiterwright.com

seiterwright.com

All information contained herein is secured from sources we believe to be reliable. However, no information is guaranteed in any way. Any reproduction of the material is prohibited without written consent of Seiter & Wright Commercial Properties.