



295 Interlocken Blvd

Broomfield, CO

Move-In Ready Lab/Flex Space

Jaime Pletcher

jaime@gibbonswhite.com

(303) 586-5936

www.gibbonswhite.com

Property Info & Gallery

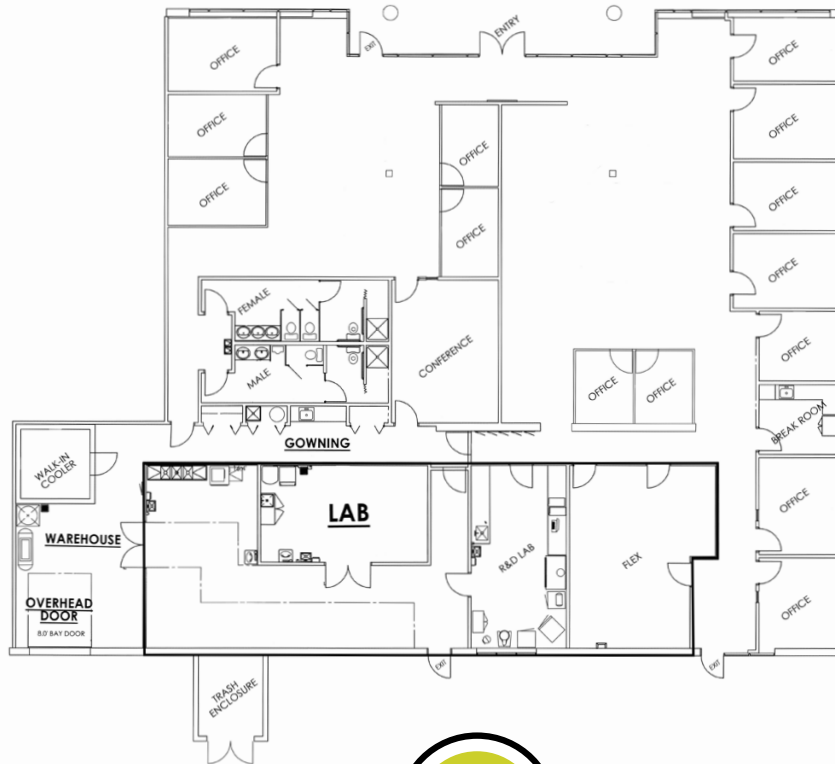
View Map

Available Immediately	8,363 sq. ft.
Lease Rate / sq. ft.	\$19.50 NNN \$17.50 NNN
Expenses / sq. ft. (2025)	\$11.10*

**Not Including Utilities*

- **Introductory Year One Rate of \$17.50 / sq. ft.** for Any Term of 3 Years or More!
- Mix of Open Work Area, Private Offices, Lab Space, & Warehouse with Dock Door
- Lab Features Epoxy Floors, Multiple Sinks, Floors Drains, Walk-In Cooler, Gowning Area & Viewing Windows
- Grade-Level & Half Dock Height Loading with Access to Motorized Leveler
- Building Features Heavy Power, 18 ft. Deck, & Versatile Loading
- Convenient to Denver & Boulder with Abundant Parking Ratio of 3.75 : 1,000
- Nearby Amenities Include Rocky Mountain Airport, Flatirons Mall, Omni Hotel & Golf Resort, and Many Retail & Restaurant Options

© 2026 Gibbons-White, Inc.



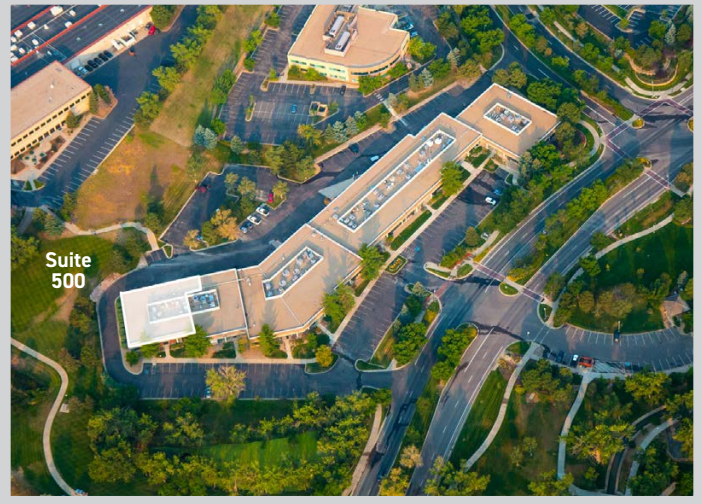
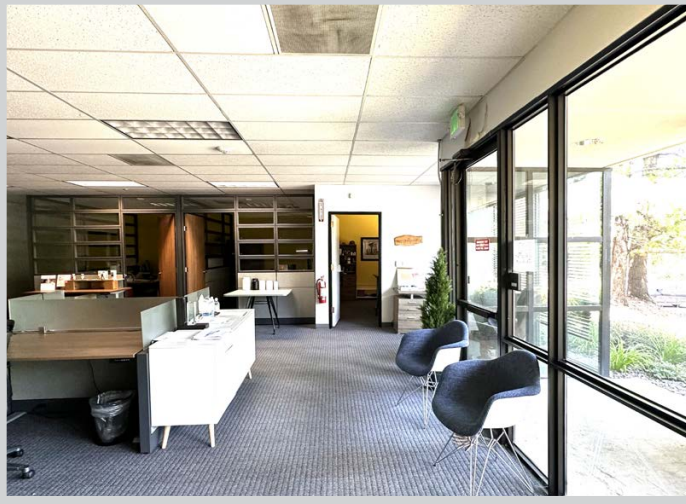
VIDEO



TOUR



© 2026 Gibbons-White, Inc.



BROOMFIELD STATS	
Population	~74,000
Elevation	5,433 ft.
Multi-Use Trails	290 miles
Employers	2,294
Median Age	39
Bachelor Degrees	~68%
Sources U.S. Census 2022; broomfield.org	