

For Lease
7,270 +/- SF
Flex Space
Wyomissing PA



220 N. Park Rd., Bldg 7b

Wyomissing, PA 19610



Property Features

- Flex Space – Former Fitness Center.
- Unit 7B 7,270 +/- Sq. Ft.
- Nice Office / Lobby Area
- Approx 5,000 Sf of open area
- 16' Clear Ceilings
- 2 Roll Up Doors

FOR LEASE **7,270 +/- SF**

BUILDING SIZE **20,000 +/- SF**

AVAILABLE **Immediately**

For more information:

John Buccinno, CCIM SIOR

610 370 8508

jbuccinno@naikeystone.com

875 Berkshire Blvd, Ste 102

Wyomissing, PA 19610

+1 610 779 1400

naikeystone.com

NO WARRANTY OR REPRESENTATION, EXPRESS OR IMPLIED, IS MADE AS TO THE ACCURACY OF THE INFORMATION CONTAINED HEREIN, AND THE SAME IS SUBMITTED SUBJECT TO ERRORS, OMISSIONS, CHANGE OF PRICE, RENTAL OR OTHER CONDITIONS, PRIOR SALE, LEASE OR FINANCING, OR WITHDRAWAL WITHOUT NOTICE, AND OF ANY SPECIAL LISTING CONDITIONS IMPOSED BY OUR PRINCIPALS NO WARRANTIES OR REPRESENTATIONS ARE MADE AS TO THE CONDITION OF THE PROPERTY OR ANY HAZARDS CONTAINED THEREIN ARE ANY TO BE IMPLIED.

For Lease
7,270 +/- SF
 Flex Space
 Wyomissing PA



General Data

Bldg Size (RSF):	20,000 +/- Rentable Square Feet	Lot Size:	11 acres
Property Type:	Warehouse/Industrial/Flex	Water/Sewer:	Public
Zoning:	C-2 Commercial	Year Built:	1995

Building Description

Stories:	One	Unit 7B	7,270 RSF
Office Sq. Ft :	Approx 1,664 SF		
Open Floor Area:	Approx. 5,000 SF		
Common Area:	Approx. 1,144 SF (shared w another tenant)	Insulation:	Fully Insulated Walls & Roof
Ceiling Hgt:	16'		Batting and Filled panels
Electricity:	240v , 400Amp		
Number of restrooms:	2 restrooms in common area		
Air conditioning:	In office	Floors:	Concrete
Heating:	Natural Gas Units Throughout		
Lighting:	Combination of High Efficiency T-5 Florescent Fixtures and Metal Halide		
Fire Suppression System:	Yes – standard wet system	Access:	N. Park Rd, near 422 Hwy
Drive in Doors:	2 Drive-in Doors		
Docks:	NA		
Parking:	35 +/- Spaces. Parking is common		
Base Rent:	\$8.50 /sf		
Cam & Taxes:	approx. \$2.50 /sf		

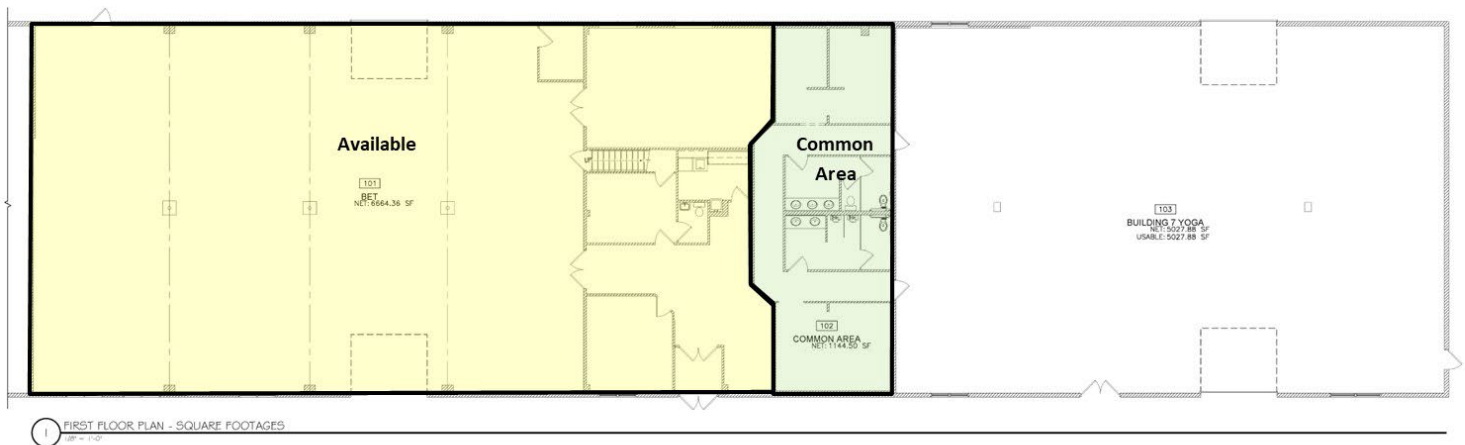


For Lease
7,270 +/- SF
Flex Space
Wyomissing PA

Floor Plan

FLOOR PLAN

Total Rentable Area 7,270 Sq. Ft.



For Lease
7,270 +/- SF
Flex Space
Wyomissing PA

