



3 2 4

ROYAL PALM WAY

**OFFICE SPACE FOR LEASE**

In Midtown Palm Beach Financial District

# 324 ROYAL PALM WAY

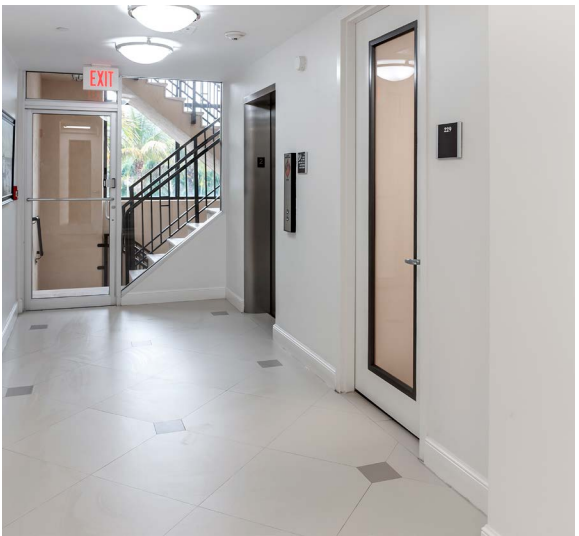
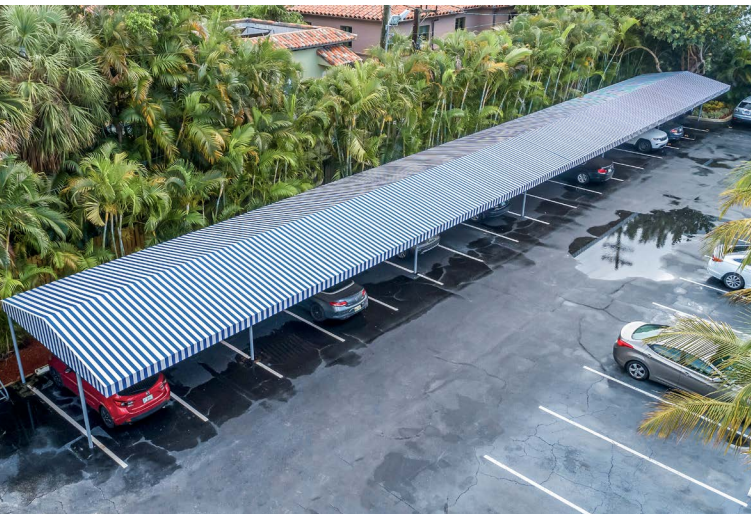
Palm Beach, FL 33480

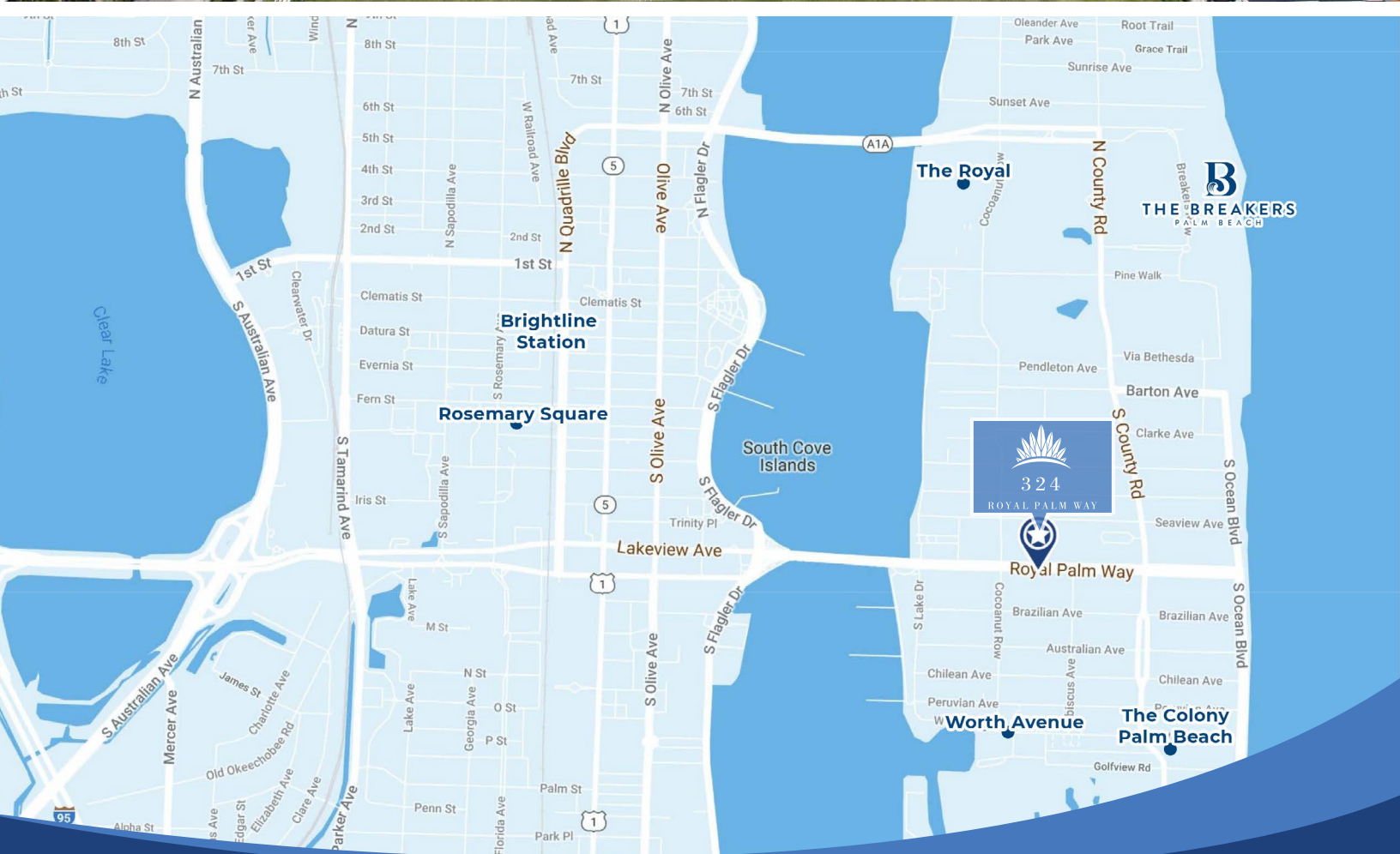
## BUILDING FEATURES

TOTAL SQUARE FEET	25,068 sf
FLOORS	3
1ST FLOOR	Impact windows
AVAILABLE SUITES	Suite 203: 400 sf (2 rooms & shared kitchen on 2nd floor) \$3,500 per month Independent electric
PARKING	2.67/1,000 Parking ratio surface and covered parking available Covered reserved parking: \$200/sp/month Reserved parking: \$100/sp/month Unreserved on-site parking lot: free

## PROPERTY FEATURES

- Highly visible three-story office building
- Located in midtown Palm Beach financial district on prestigious Royal Palm Way
- Excellent location close to upscale shopping on Worth Avenue, The New Royal, and County Rd
- Blocks from the Breakers Hotel, The Colony Hotel, Brazilian Court, and neighborhood restaurants
- Across the street from Public and Private schools, the Four Arts museum, lecture hall and library
- Easy access to I-95 and PB Airport
- Ground floor available with building signage
- Covered parking available
- Onsite ATM
- New common kitchen and bathrooms on the second floor
- Unreserved free parking





For more information, please contact:  
 CONNIE THOMAS, CCIM  
 Senior Managing Director  
 561.371.1768  
 cthomas@tcrefl.com

**TCRE**  
 222 Lakeview Ave | Suite 950 | West Palm Beach, FL 33401  
 www.tcrefl.com