

# 9696

CULVER BLVD, CULVER CITY,  
CA 90232

OFFICE SPACE FOR LEASE  
DOWNTOWN CULVER CITY



AVAILABILITY Suite 108: ± 1,636 SF  
Suite 302: ± 1,404 SF  
Suite 308: ± 4,495 SF

RENT \$5.50 SF Modified Gross (Net of Electrical)

TERM 3 - 5 Years, *Shorter Term Considered*

OCCUPANCY Suite: 108: January 2025  
Suite 302: Immediate  
Suite 308: 60 Days

PARKING 3:1,000 at \$175/mo

FEATURES

- Move-in Ready Office Space
- Great Natural Lighting
- Operable Windows Create Optimum Airflow
- Outdoor Hallways, Great For Social Distancing
- Visitors and Guests Park FREE!
- Historic Building With Spanish Architecture
- Beautifully Maintained Common Areas

CONTACT Tibor Lody, SIOR  
310.899.2720  
tlody@leewestla.com  
AGT DRE 01261129





Move-in Ready Office Space with Outdoor Hallways, Perfect for Social Distancing



Well Designed Garden Office Building Which Mitigates Impact of Covid-19



Open Air Meeting Spaces and Common Areas



Operable Windows Create Optimal Airflow



Secured Facility with Access Controls Throughout



Dedicated, Independent HVAC System



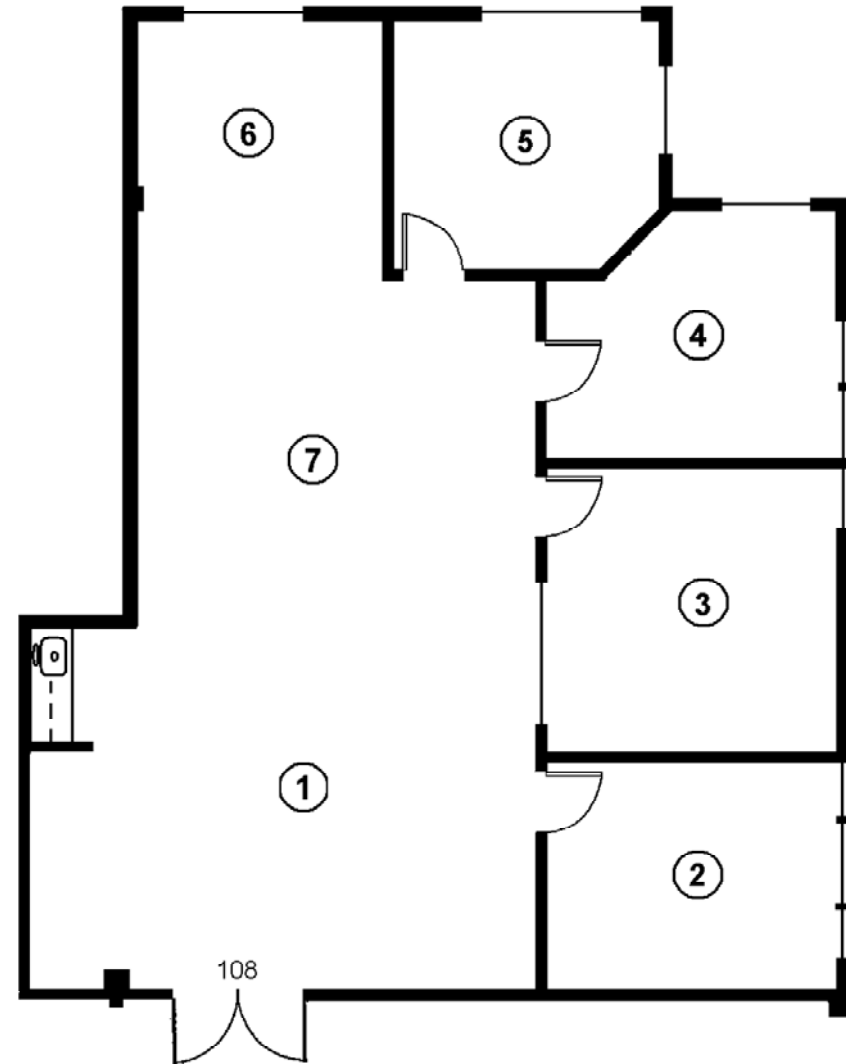
Direct Walking Access from Surface Parking Lot



Separate Delivery Area for Packages, Mail & Food Delivery

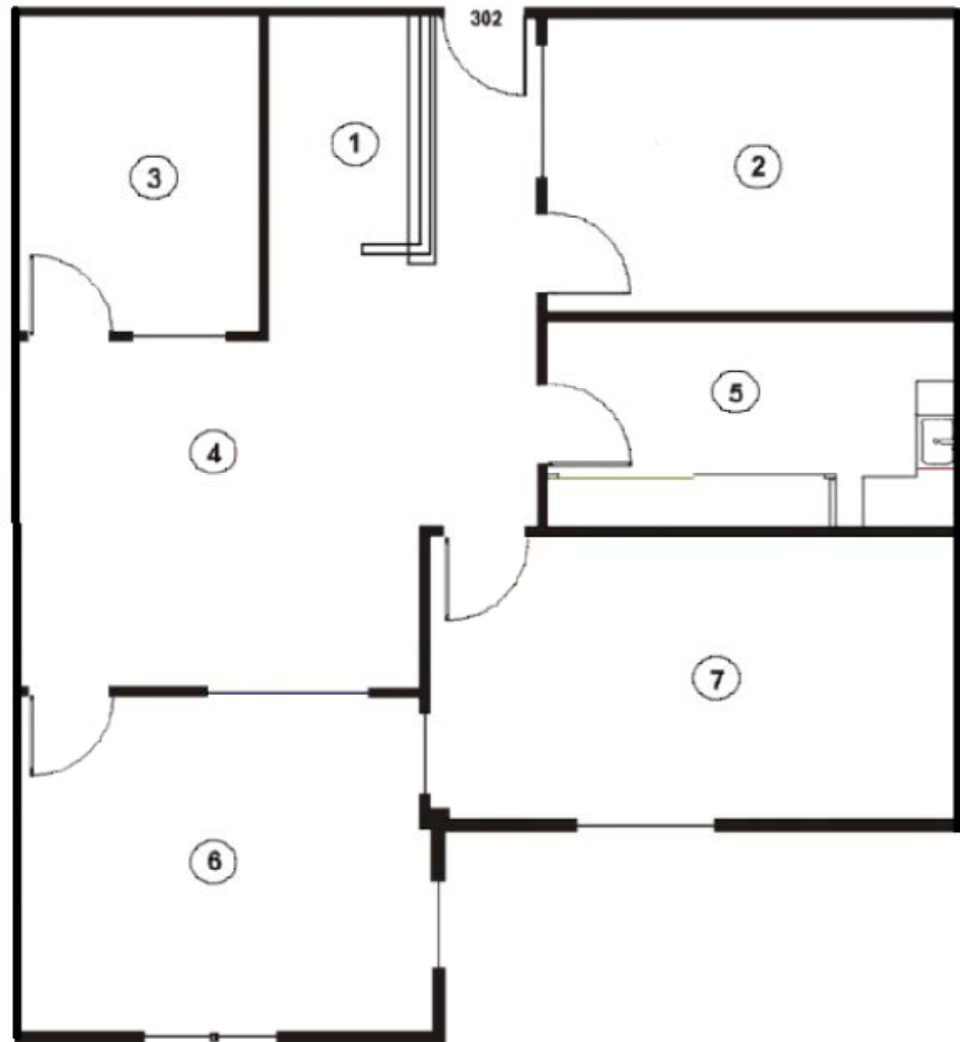
# SUITE 108 FLOOR PLAN ± 1,636 SF

- Three Offices, One Conference, Open Area & Kitchen
- Openable Windows
- Common Area Patios
- Available January 1, 2025



# SUITE 302 FLOOR PLAN ± 1,404 SF

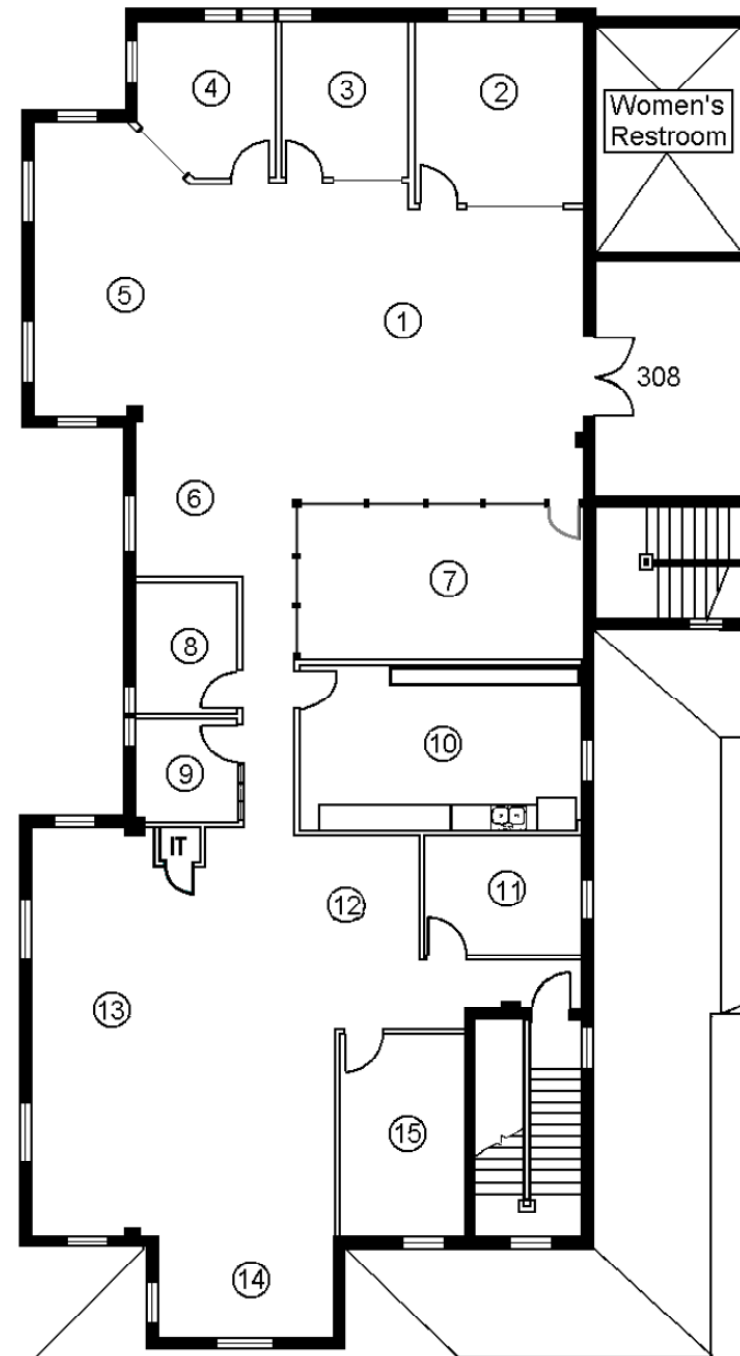
- Three Offices, Open Area & Kitchen
- Openable Windows
- Common Area Patios
- Available May 1, 2024



# SUITE 308 FLOOR PLAN

± 4,495 SF

- 6 Offices, Conference Room, Kitchen, Storage Room and Open Area
- Openable Windows
- Common Area Patios
- Available in 60 Days, Call Broker



# LOCAL AMENITIES



IVY STATION /  
CULVER METRO LINE STATION

PLATFORM  
BLUE BOTTLE COFFEE  
LOQUI  
MARGOT  
SWEET GREEN  
VAN LEEUWAN

TOYOTA

WENDY'S

CAVA

IN-N-OUT

CULVER CITY FARMER'S  
MARKET  
CERVETECA  
LA ROCCO'S  
MONTY'S GOOD  
BURGER  
PUBLIC SCHOOL 310  
PICCALILLI

STARBUCKS  
CAFE VIDA  
S&W COUNTRY DINER  
SESTINA  
CITY TAVERN

TRADER JOE'S

CULVER STEPS  
SALT & STRAW  
MENDOCINO FARMS  
PHILZ COFFEE  
COREPOWER YOGA

RUSH STREET

BURGER  
LOUNGE  
LUNA GRILL

# SURROUNDING DEVELOPMENTS EAST

THE PLATFORM (NOT PICTURED)

IVY STATION

CULVER STEPS

CULVER HOTEL

CULVER STUDIOS

PALIHOTEL

MERALTA PLAZA





# SURROUNDING DEVELOPMENTS WEST



ONE CULVER

HARLOW

CULVER CITY MEDICAL PLAZA

KIRK DOUGLAS THEATER

BRICK AND MACHINE

MERALTA PLAZA



**Tibor Lody, SIOR**  
Principal  
310.899.2720  
tlody@leewestla.com  
AGT DRE 01261129

**Aleks Trifunovic, SIOR**  
President  
310.899.2721  
atrifunovic@leewestla.com  
BKR DRE 01363109

**Keith Fielding**  
Principal  
310.899.2719  
kfielding@leewestla.com  
AGT DRE 01729915

**Tommy Isola**  
Principal  
310.899.2709  
tisola@leewestla.com  
AGT DRE 01974024

**Adam Levine**  
Associate  
310.899.2703  
alevine@leewestla.com  
AGT DRE 02104830

Lee & Associates Los Angeles West, Inc.  
1508 17th Street, Santa Monica, CA  
310.899.2700 | www.leewestla.com | DRE 01222000